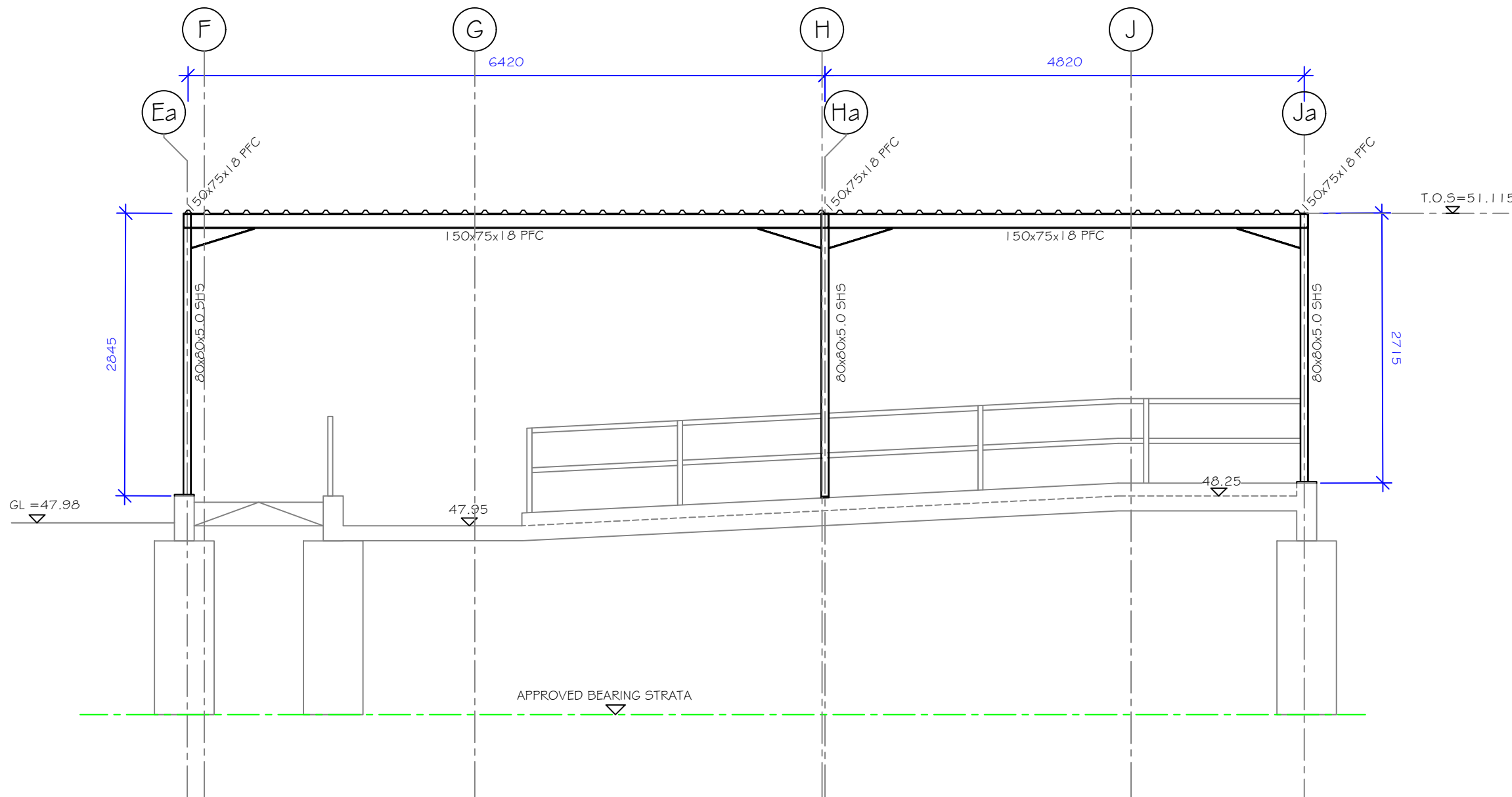
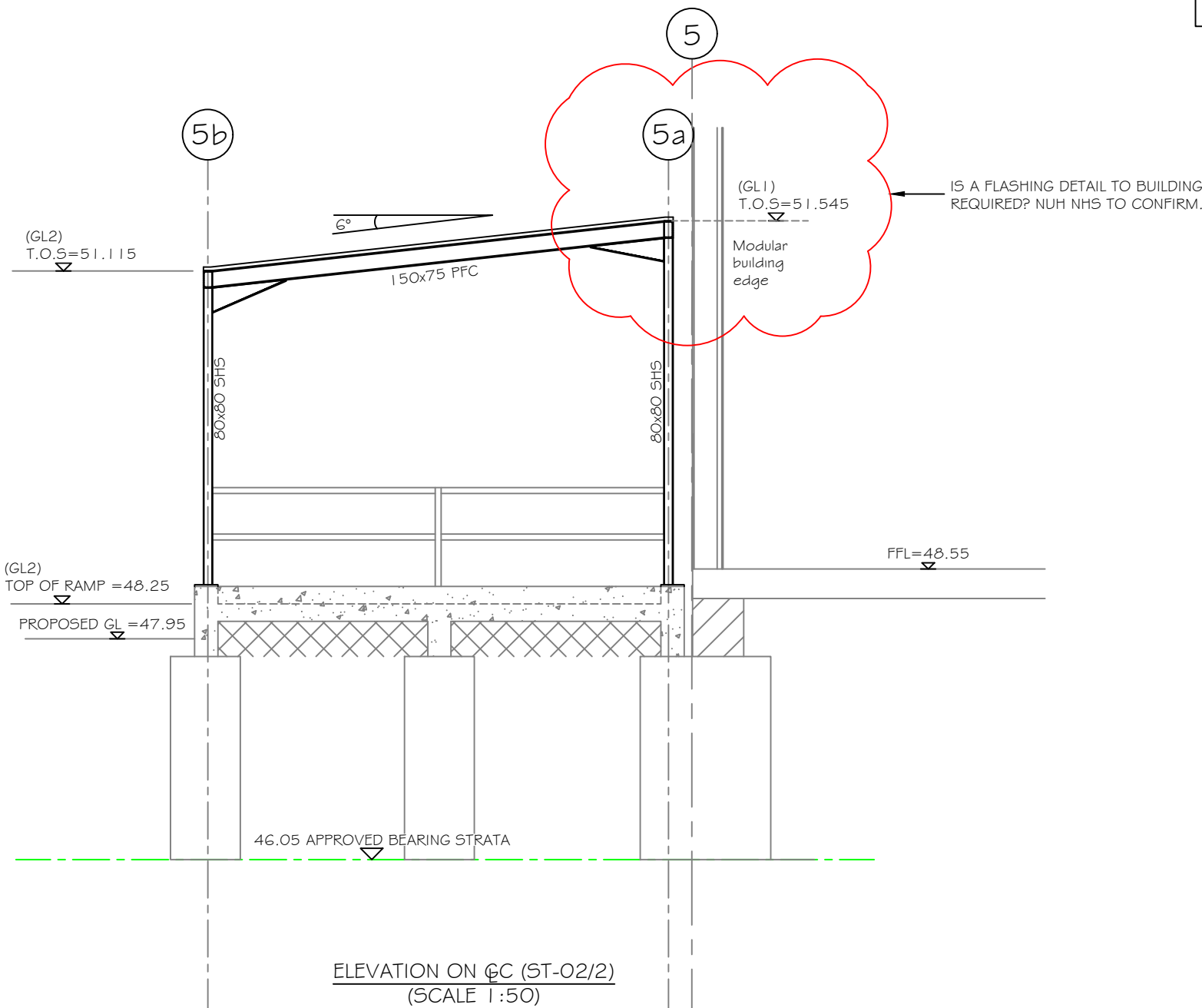


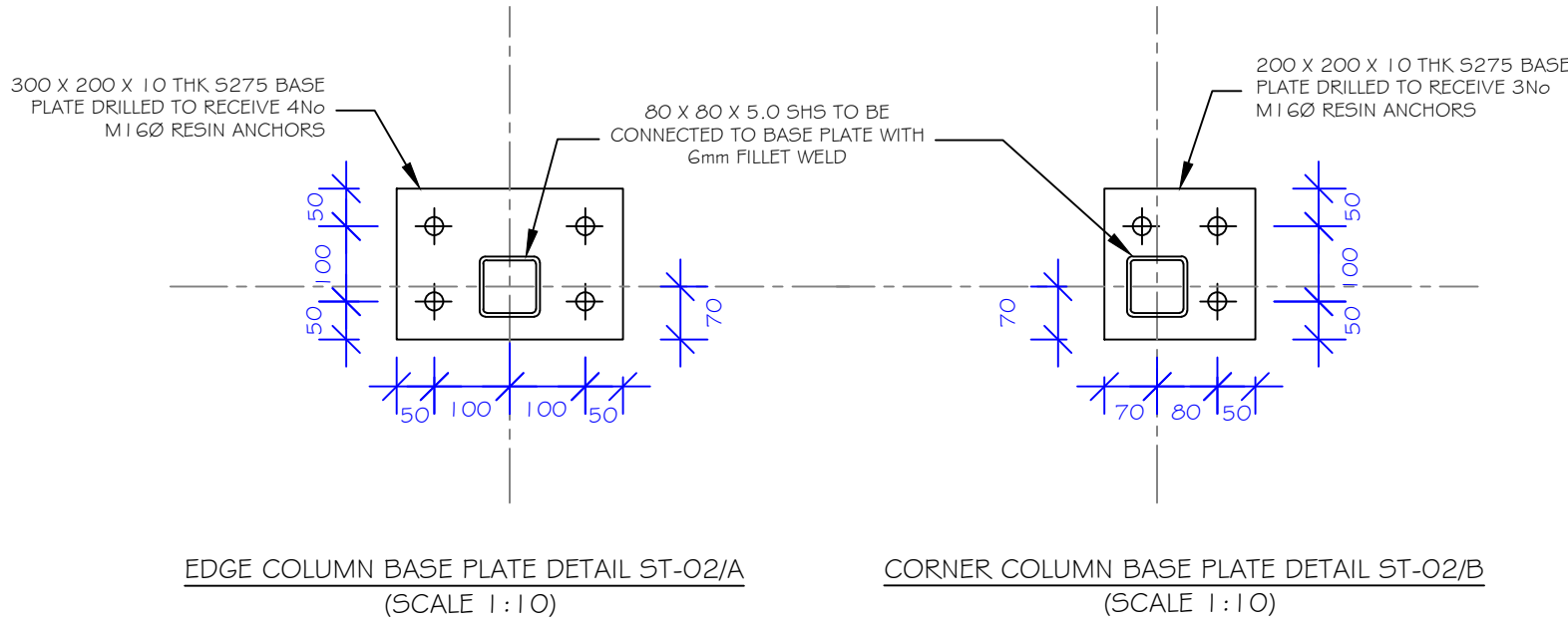
CANOPY STRUCTURAL ARRANGEMENT PLAN
(SCALE 1:50)



ELEVATION ON @2 (ST-02/1)
(SCALE 1:50)



ELEVATION ON @C (ST-02/2)
(SCALE 1:50)



STEELWORK NOTE 1: GENERAL SPECIFICATION

TOTAL FACTORED REACTION
SECTION SIZE
NUMBER OF SHEAR STUDS REQUIRED

THE STRUCTURAL STEELWORK SHALL BE FABRICATED AND ERECTED IN ACCORDANCE WITH THE NATIONAL STRUCTURAL STEELWORK SPECIFICATION FOR BUILDING CONSTRUCTION PUBLISHED BY THE BCSA.

THE STEELWORK SUB-CONTRACTOR WILL BE REQUIRED TO DESIGN MEMBER CONNECTIONS AND TO PREPARE AND SUBMIT FOR COMMENT COPIES OF THE FABRICATION DRAWINGS AT LEAST THREE WEEKS PRIOR TO COMMENCEMENT OF FABRICATION. ALL CONNECTIONS SHALL HAVE A MINIMUM OF 2NO. BOLTS AND DESIGNED FOR A MINIMUM 35kN FACTORED REACTION UNLESS OTHERWISE NOTED. THE STEELWORK SUB-CONTRACTOR IS RESPONSIBLE FOR THE TEMPORARY STABILITY OF THE FRAME DURING ERECTION.

UNLESS OTHERWISE NOTED ALL STEELWORK SHALL BE BLAST CLEAN TO SA 2½ AND PAINTED WITH ONE COAT OF ZINC PHOSPHATE EPOXY PRIMER (80µm DFT) IN ACCORDANCE WITH BS 7079: PART A1. (PREPARATION OF STEEL SUBSTRATES BEFORE APPLICATION OF PAINTS AND RELATED PRODUCTS. VISUAL ASSESSMENT OF SURFACE CLEANLINESS. REPRESENTATIVE PHOTOGRAPHIC EXAMPLES OF THE CHANGE OF APPEARANCE IMPARTED TO STEEL WHEN BLAST-CLEANED WITH DIFFERENT ABRASIVES) UNLESS OTHERWISE NOTED ON PLAN.

ALL STEELWORK TO BE HOT DIP GALVANIZED TO B5 EN ISO 1461 TO GIVE A MINIMUM AVERAGE COATING OF 85 MICRONS. WHERE PAINTING OF GALVANIZED STEELWORK IS REQUIRED FOR AESTHETIC OR OTHER REASONS, SUITABLE SYSTEMS FROM B5 EN ISO 12944 MAY BE USED. ALL NECESSARY HOLES IN GALVANIZED MEMBERS TO BE DRILLED PRIOR TO GALVANISING.

ALL STRUCTURAL STEELWORK FOR USE IN THE WORKS SHALL BE OF THE FOLLOWING GRADES IN ACCORDANCE WITH BS EN 10025 AND BS EN 10210:

UNIVERSAL BEAMS AND COLUMNS (EXTERNAL) S355J2H
HOLLOW SECTIONS (EXTERNAL) S355J2H

ALL STEELWORK TO BE CE MARKED AND BASED ON AN EXECUTION CLASS EXC2.

ALL BOLTS USED SHALL BE GRADE 8.8 AND ZINC PLATED.

THE STEELWORK SUB-CONTRACTOR SHALL NOT FORM ANY HOLES THROUGH STEELWORK MEMBERS WITHOUT THE WRITTEN APPROVAL OF THE STRUCTURAL ENGINEER.

WHERE DISSIMILAR STEELS ARE TO BE CONNECTED A SUITABLE ISOLATING MATERIAL SHALL BE INCORPORATED.

THE STEELWORK SUB-CONTRACTOR TO PROVIDE THE DESIGN TEAM WITH A COPY OF THE FOLLOWING CERTIFICATES:-

- DECLARATION OF PERFORMANCE (DOP) CERTIFICATE.
- FACTORY PRODUCTION CONTROL (FPC) CERTIFICATE.
- WELDING CERTIFICATE.

ALL DIMENSIONS FOR STEEL TO BE SITE MEASURED PRIOR TO FABRICATION.
ALL DIMENSIONS SHOWN ARE FOR PRICING PURPOSES ONLY.

R.D. SPAN OF SINGLE SKIN SYSTEM PROFILED METAL ROOFING SUCH AS EUROCLAD REF: MW5R 0.9mm GAUGE (DOUBLE SPAN) OR SIMILAR APPROVED. PANEL TO BE FIXED DOWN IN ACCORDANCE WITH MANUFACTURERS GUIDELINES.

© 2023 This drawing is copyright of Keith Simpson Associates Ltd and must not be copied or reproduced without prior written approval of Keith Simpson Associates Ltd. All rights reserved.

NOTES:

DO NOT SCALE. All dimensions to be checked / verified on site.

General

All drawings to be read in conjunction with Architects / Structural Engineers drawings & specification.

All structural works to be carried out in accordance with Part A of the Building Regulations and where required the Building Warranty Company's standards.

No Structural Works to be carried out on site until full written approval has been obtained from Building Control and any Building Warranty Company warranting the building works.

C1	17/11/23	CONSTRUCTION ISSUE	BM	CT
T1	04/08/23	ISSUED FOR TENDER	IB	CT
P1	12/07/23	PRELIMINARY ISSUE	IB	CT
Rev	Date	Description	Drwn	Chkd



7C Colwick Quays Business Park
Colwick
Nottingham
NG4 2JY

Consulting Engineers
• Structural • Civil •

Tel: 0115 967 3100
Web: www.ksastructures.co.uk

Client
NUH NHS TRUST

Project
MOBILITY MODULAR ANNEX - BUILDING 235
CITY CAMPUS
NOTTINGHAM

Drawing Title
CANOPY GENERAL ARRANGEMENT PLAN & DETAILS

Managing Engineer
CHRIS TAYLOR

Scale
1:50

Date
JULY 23

Size
A1

Status
CONSTRUCTION

Drg. No.
6240-ST-02

Rev.
C1