



# United Lincolnshire Hospitals

NHS Trust

Trust Headquarters

Lincoln County Hospital  
Greetwell Road  
Lincoln  
LN2 5QY

[www.ulh.nhs.uk](http://www.ulh.nhs.uk)

## Supporting transport information for the proposed Skegness and District General Hospital Community Diagnostic Centre

The plan will set objectives targets and actions determined by the staff travel survey. The plan will support the Local Transport Plan and the Skegness Transport Strategy

The information below details travel information and issues associated with the new £12m build of a Community Diagnostic Centre under the National initiative for provision of key diagnostic services including MRI, CT and X-ray with additional cardiac and respiratory service. This will greatly improve the patient experience who would normally need to travel to either Lincoln County or Pilgrim hospitals.

This will not include baseline data, which will be addressed in the short term where mode specific targets and actions will be implemented.

### Background

Skegness is a seaside resort and civil parish in Lincolnshire situated on the East Coast of Lincolnshire with a population of around 21,000. As a seaside resort, travel and transport issues vary with more demand on local and county roads during busy holiday periods.

Skegness is the largest town on the east coast of Lincolnshire, surrounded by agricultural countryside to the west. East Lindsey has the largest population of households of persons 65 and over<sup>1</sup> and Skegness is in the 10% range of the most deprived areas in Lincolnshire<sup>2</sup>.

The nature of the rural area impacts on the opportunities and challenges faced by people and businesses, and on quality of life. There are challenges of delivering services in rural areas due to distance and infrastructure.

Economy is seasonal, with the tourist industry being the principal economic factor. Only 43.7% over 16 year olds in Skegness are currently economically active.<sup>3</sup>

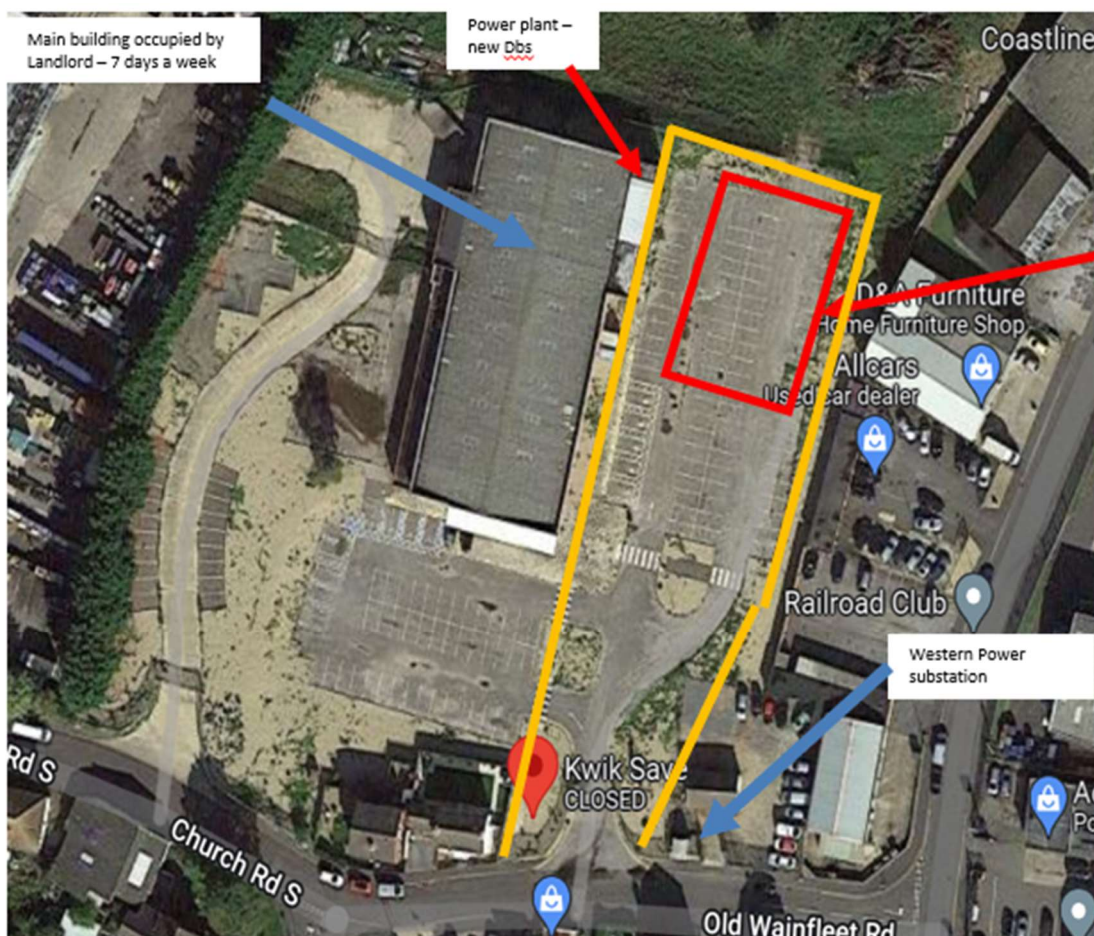
---

<sup>1</sup> Joint Strategic Need Assessment - Population

<sup>2</sup> Joint Strategic Needs Assessment – Indices of deprivation

<sup>3</sup> [Office for national statistics](http://www.statistics.gov.uk)

Travel to workplaces in Skegness is predominantly by private vehicle with 55.3% of commutes undertaken by car or van, 17% walking, 3% cycling and 3% by public transport.



Skegness's tourist industry delivers a major percentage of the economy of Lincolnshire. Since 2009 the value of the visitor economy in the area has increased from £438m to £733m, with the number of visitor days also increasing year on year.

As well as the Lincolnshire coast with the popular seaside resorts of Skegness, Mablethorpe, Sutton on Sea, Chapel St Leonards and Ingoldmells, the area includes the Lincolnshire Wolds Area of Outstanding Natural Beauty with rolling landscapes and traditional market towns. Due to the increase in visitor economy, there is commitment from local authorities to support this area by extending the season to help create more year-round employment.

Lincolnshire County Council has recognised the value of Skegness's economy for the county and has recently proposed trunk road improvements described as the Lincolnshire Coastal Highway. This route comprises the A46 west of Lincoln and along the A158 to Skegness. It also includes the A57 from the county boundary to where it joins the A46 in Lincoln. The project aims to

- improve transport corridors to the Lincolnshire coast
- support a range of economic sectors, both across the county and locally
- assist with supporting balanced growth, securing development and providing access and connectivity

A recent project undertaken by Lincolnshire County Council in 2019– Go Skegness was a £5.7m project, as part of £10m spent on road improvements within Skegness since late 2016. The scheme provided the following benefits:

**OUTSTANDING CARE** *personally* **DELIVERED**

- A longer bus lane and an upgraded shared cycling and walking path on the A52 Roman Bank
- Improved cycleways, footways and links to key visitor destinations in and around Skegness and Ingoldmells, including Butlins to North Shore Road; Winthorpe Avenue; and Spirewic Avenue to Old Roman Bank
- Over one mile of new and enhanced Skegness to Gibraltar Point shared footway / cycleway
- New and improved public transport facilities such as bus stops and laybys, including at Lumley Road and on the A52/Skegness Road near Beacon Medical Practice in Ingoldmells
- Improved pedestrian crossings at the Sea Lane/Roman Bank junction in Ingoldmells and Scarbrough Avenue/Roman Bank junction in Skegness.
- Improved way-finding and information for visitors

The new Community Diagnostic Centre is being built on an old retail site on Old Wainfleet Road. This purpose built facility will cover an area of 628 sqm with on-site parking for 40 vehicles. Access and egress to the site will be through the main entrance and below is estimated schedule of transport based on 5 days a week opening

TRANSPORT USAGE					
Type of Vehicle	Purpose	Per Day		Days	Total per week
		AM	PM		
Car	staff	15	15	5	150
Car	Patients	30	30	5	300
Van	Delivery	1		5	5
Ambulances	patients	5		5	25
Lorry - 7.5 tonne	Delivery	1	1	2	4
	Total	52	46	22	484

## Travel and Transport

### Roads

There are two main A roads into Skegness the A158 from Lincoln and the west of the County and the A52 from Boston in the South and Mablethorpe in the North. The A1028 joins the A158 from the A16 north of the county.

All roads into Skegness are single carriageway and often congested during holiday periods with holidaymakers and day-trippers. Local traffic is busiest at the junctions of Wainfleet Road and Roman Bank.

The proposed facility will be situated on Old Wainfleet Road, a 2 minute drive from Skegness Urgent Treatment Centre and a 3 minute drive from the Town centre.

### Bus and Rail interchange

Public transport facilities are better than average for the county with a purpose built interchange for Rail and bus passengers. Skegness railway station was completely transformed in 2014 through the Community Rail project.

The nearest bus stop is approximately 6 minutes walking distance.

## Rail

The East Midlands Railway's Poacher Line – a direct route from Nottingham, has services to Skegness that run hourly. Journeys from Nottingham take 2hours 15 mins with stops on the service including Grantham, Ancaster, Boston and Wainfleet. Journeys from Wainfleet take as little as 10 minutes.

The rail station/interchange is an eight-minute walk to the proposed Community Diagnostic Centre along the A52.

Plusbus tickets are valid in the Skegness Plusbus zone on Stagecoach, Brylaine Travel and Hunts Coaches bus services

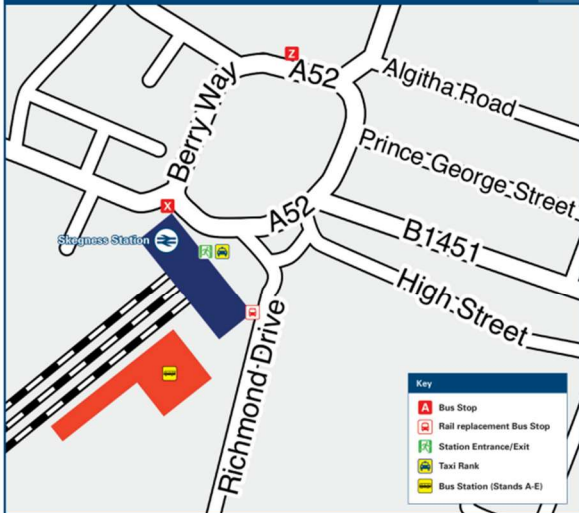
Onward links from the station are detailed in the information below.



# Skegness Station

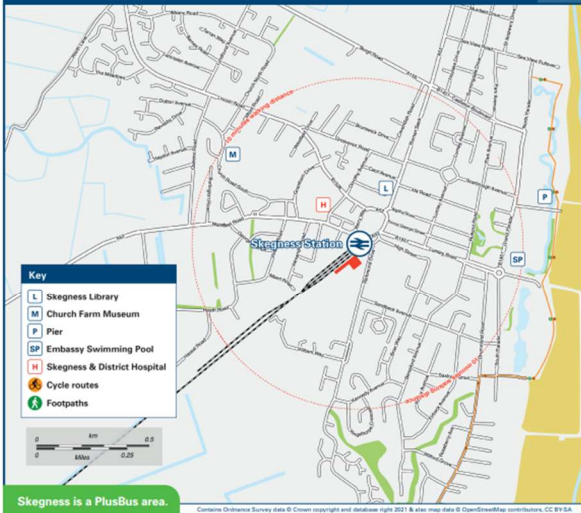
## Onward Travel Information

### Buses and Taxis



Rail replacement buses and coaches depart from Richmond Drive near the entrance to the station.

### Local area map



**PlusBus** is a discount price 'bus pass' that you buy with your train ticket. It gives you unlimited bus travel around your chosen town, on participating buses. Visit [www.plusbus.info](http://www.plusbus.info)

### Main destinations by bus (Data correct at June 2021)

DESTINATION	BUS ROUTES	BUS STOP
Alford #	7#	2
Boston	IC7	Bus Stn 2
Burgh-le-Marsh	56	Bus Stn 2
Butlins Skegness (Main Gate) #	1, 3	Bus Stn 2
Candlesby	59	Bus Stn 2
Chapel Point (Acacia Avenue) #	56	Bus Stn 2
Chapel St Leonards #	1	Bus Stn 2
Fantasy Island (Ingoldmells) #	59	Bus Stn 2
Friskney	1, 3	Bus Stn 2
Hagworthingham	IC7	Bus Stn 2
Hogsthorpe #	57	Bus Stn 2
Horncastle	56	Bus Stn 2
Hundley	56	Bus Stn 2
Huttoft	59	Bus Stn 2
Ingoldmells (Village Centre / St Paul's Church) #	1	Bus Stn 2
Leverton	59	Bus Stn 2
Lincoln	IC7	Bus Stn 2
	57	Bus Stn 2
	56	Bus Stn 2

DESTINATION	BUS ROUTES	BUS STOP
Mablethorpe	59	Bus Stn 2
Mumby #	59	Bus Stn 2
Old Leake	IC7	Bus Stn 2
Partney	57	Bus Stn 2
Raithby	56	Bus Stn 2
Sandilands	56	Bus Stn 2
Skegness area local villages	59	Bus Stn 2
Skegness -	CallConnect*	Bus Station
- Albany Road	2	Bus Stn 2
- Beacon Park	2	Bus Stn 2
- Seafront (Grand Parade / North Parade) #	1, 3	Bus Stn 2
- Skegness District Hospital	59	Bus Stn 2
- Southview Leisure Park (Inside / Reception Centre)	56	Bus Stn 2
- Southview Leisure Park (Outside / Main Entrance)	2	Bus Stn 2
Spalding (& Springfields Outlet)	56	Bus Stn 2
Spilsby	57	Bus Stn 2
Sutton-on-Sea	56	Bus Stn 2
Trusthorpe	59	Bus Stn 2

DESTINATION	BUS ROUTES	BUS STOP
Wainfleet	IC7	Bus Stn 2
Winthorpe #	57	Bus Stn 2
Wragby	1, 3	Bus Stn 2
Wrangle	59	Bus Stn 2
	56	Bus Stn 2
	IC7	Bus Stn 2
	57	Bus Stn 2

**Notes**

- PlusBus destination, please see below for details.
- Bus routes 1, 2, 3, 56 and 59 operate daily.
- Bus routes IC7 and 57 operate Mondays to Saturdays only.
- PlusBus tickets are valid in the Skegness PlusBus zone on Stagecoach, Brylaine Travel and Hunts Coaches bus services.
- For bus times and other bus service information, please see timetables and notices at the bus station or contact Traveline on 0871 200 22 33.
- Direct trains operate to this destination from this station.
- \* CallConnect is a bookable bus service operating in this area and surrounding villages Monday to Saturday. To book a journey or for more details call 0345 234 3344 or visit the website [www.linccbus.info](http://www.linccbus.info)
- # Bus route 7 operated by Hunts Coaches runs a limited service to these destinations on Mondays to Saturdays from stop 2 on the map, contact Traveline for times.

### Taxis

Skegness station is served by a taxi rank or a cab office. Check availability before travelling, and pre-book if necessary. Please consider using the following local operators: (inclusion of this number doesn't represent any endorsement of the taxi firm)

**4000 Taxis**  
01754 764 000

**CJ's Taxis**  
01754 744 444

**Ricks North Shore Taxis**  
01754 764 444

Further information about all onward travel

<b>Local Cycle Info</b> <a href="http://e-lindsey.gov.uk">e-lindsey.gov.uk</a> <small>For more information about cycle routes.</small>	<b>National Cycle Info</b> <a href="http://sustrans.org.uk">sustrans.org.uk</a> <small>Sustrans is the UK's leading sustainable transport charity.</small>	<b>Bus Times</b> <small>See timetable displays at bus stops.</small>  <a href="http://www.traveline.info">www.traveline.info</a> 0871 200 22 33	<b>NextBuses mobi</b> <small>Find the bus times for your stop.</small> 	<b>PlusBus</b> <small>A discount price 'bus pass' that you buy with your train ticket. It gives you unlimited bus travel around your chosen town, on participating buses.</small> 
--	--	---	---	--

**National Rail Enquiries**

<b>Online</b> <a href="http://nationalrail.co.uk">nationalrail.co.uk</a>	<b>NRE App</b> Free National Rail Enquiries app for iOS and Android	<b>Social Media</b> <a href="https://www.facebook.com/nationalrailenq">facebook.com/nationalrailenq</a> <a href="https://twitter.com/nationalrailenq">@nationalrailenq</a>	<b>Alert Me</b> <small>You can sign up to Alert Me messages on the National Rail Enquiries website where you can receive train and platform notifications directly to your smart phone.</small> <a href="http://nationalrail.co.uk/alertme">nationalrail.co.uk/alertme</a>	<b>Contact Centre</b> 03457 48 49 50 <small>Calls cost no more than calls to geographic numbers (01 or 02) and may be recorded.</small>	<b>PlusBike</b> <a href="http://nationalrail.co.uk/plusbike">nationalrail.co.uk/plusbike</a> <small>For more information.</small>
---	--	--	--	---	---

OUT **EMR**



This poster shows details of popular destinations and main, frequent bus routes. Additional services may run, so please check with Traveline or see posters at local bus stops. Whilst considerable care has been taken to ensure the information contained on this poster is correct and accurate, National Rail cannot accept responsibility for any loss or inconvenience caused by any errors or omissions, or for loss, damage, injury or inconvenience relating to the cancellation, alteration, delay or diversion of a service. For any feedback, please e-mail [connect@newstravelposters.com](mailto:connect@newstravelposters.com)

## Bus

There are three main bus operators for Skegness; Stagecoach, Brylaine and Hunts Coaches. These offer Interconnect services from Lincoln, Boston and Into-Town services. The nearest bus stop to the facility is on Wainfleet Road, a 2-minute walk away. Services that stop here are Stagecoach 57 from Spalding to Skegness, Stagecoach 2, Skegness to Beacon Park, Brylaine B7 from Boston to Skegness Bus station.

Hunt's coaches operate local public service No.7, Monday to Saturday, from Alford to Skegness. Other services that serve the Town are the Stagecoach Interconnect 6 from Lincoln to Skegness and

CallConnect, the award winning demand responsive, bookable bus service operates in this area and surrounding villages Monday to Saturday.

## Cycle

Provision for cycle storage in the Town is limited with some cycle racks near the South-shore car park on the esplanade and at the Transport hub. There are no off road cycle routes through the Town however there are quieter roads that are more accessible by bike.

## Walk

Skegness Town is ideally suited to walking with wide pavements that are well lit. The facility is a 10 minute walk from the Town centre and the Transport hub and an 8 minute walk from Skegness and District Hospital.

## Transport Statement

The planned works to build a new facility at on the old retail premises is not expected to have an adverse effect on increased travel to the site.

Whilst it could be argued that the facility may increase numbers of people attending for treatment, when developed, the LCHS Travel Plan will set out measures to offer attractive alternatives for patients, visitors and staff.

These include but are not limited to;

- Promotion of alternative travel options for patients when visiting for appointments
- Partnership working with Skegness Town Council to support the Local Transport plan and Transport strategy to promote active travel.
- Installation of cycle storage

Travel survey data will be captured as a baseline in the short term and will be used to measure and monitor any increase/decrease in travel patterns post build.

## Air Quality Assessment

LCHS does not capture Air quality data for the Skegness hospital site however it is aware of the need to reduce CO2 levels from industrial and domestic emissions and motorised vehicles in the

**OUTSTANDING CARE** *personally* **DELIVERED**

area, which will be addressed in the Travel plan. The Trust will work with LCHS and East Lindsey District Council to address any issues arising from any increase in CO2 emissions related to the Community Diagnostic Centre once the build is completed.

Currently, there are no Air Quality Management Areas of concern in the town.

To maintain low levels of air pollution the Trust in partnership with LCHS will implement ultra-low measures within the Travel Plan which will include

- Installation of cycle storage
- Installation of E-bike charging points
- Electric Vehicle charging point
- Potential introduction of cargo-bikes for short distance deliveries

Sarah Hubery  
Travel Plan Coordinator  
United Lincolnshire Hospitals NHS Trusts  
Facilities department, Lincoln County Hospital,  
Greetwell Road,  
Lincoln, LN2 5QY  
Tel: 01522 309477  
sarah.hubery@ulh.nhs.uk