

# Design Approach

---

Facade and Materiality

Contextual Considerations

Proposed Landscaping / External Works

Quality User Experience | Example Waiting Room  
| Example Changing Facility

04

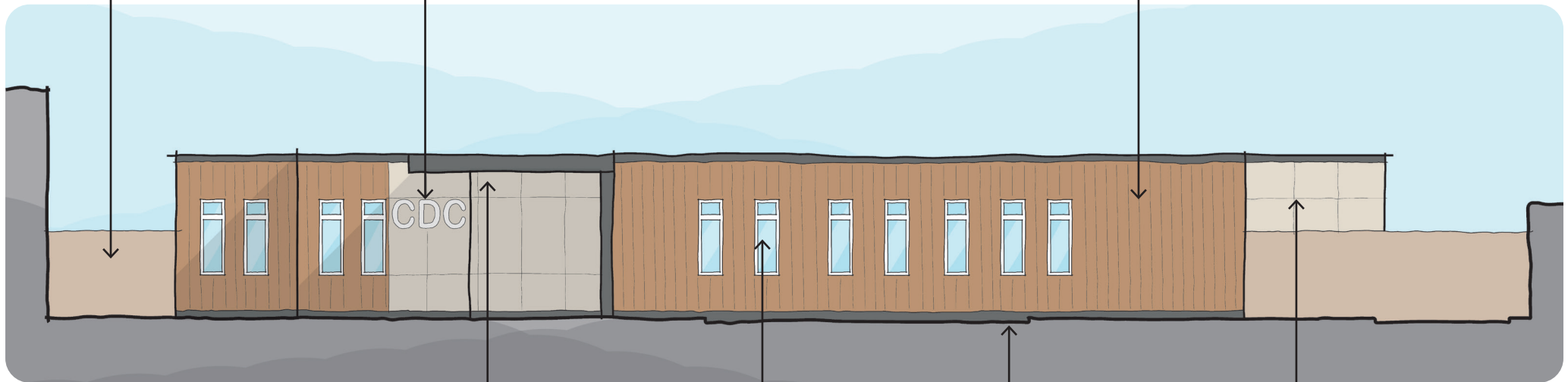
# 04 Design Approach

## Facade and Materiality

Timber Fencing to close the back of house off from the main part of the site.

Bold signage along the front elevation.

Timber effect elevational treatment along the main facade to be in keeping with the contextual greenery at the back of the site.



Canopy with lighting to denote the entrance space and provide shelter for visitors. A change in materiality for this area allows the patient to easily orientate themselves.

Windows to be the same size to create a rhythm along the main facade.

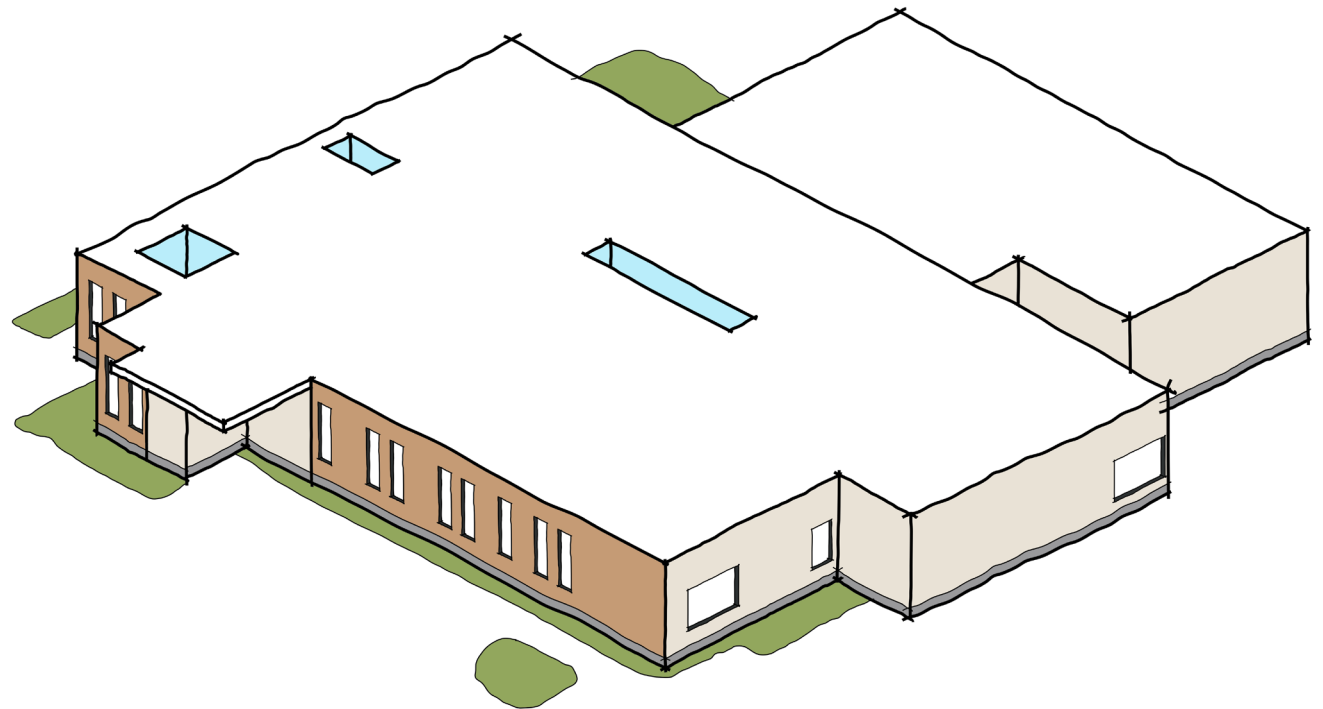
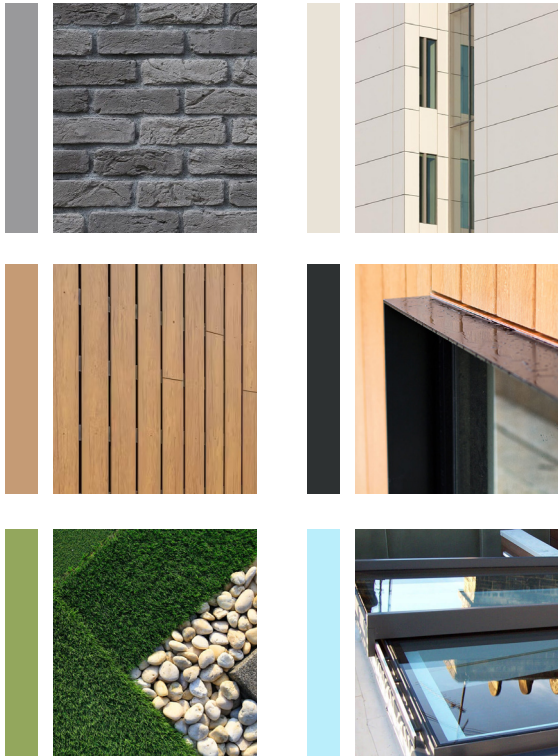
Solid brick plinth at the bottom of the building to help ground the facade.

Secondary facade material to be a simple, off-white finish to compliment the main facade.

# 04 Design Approach

## Facade and Materiality

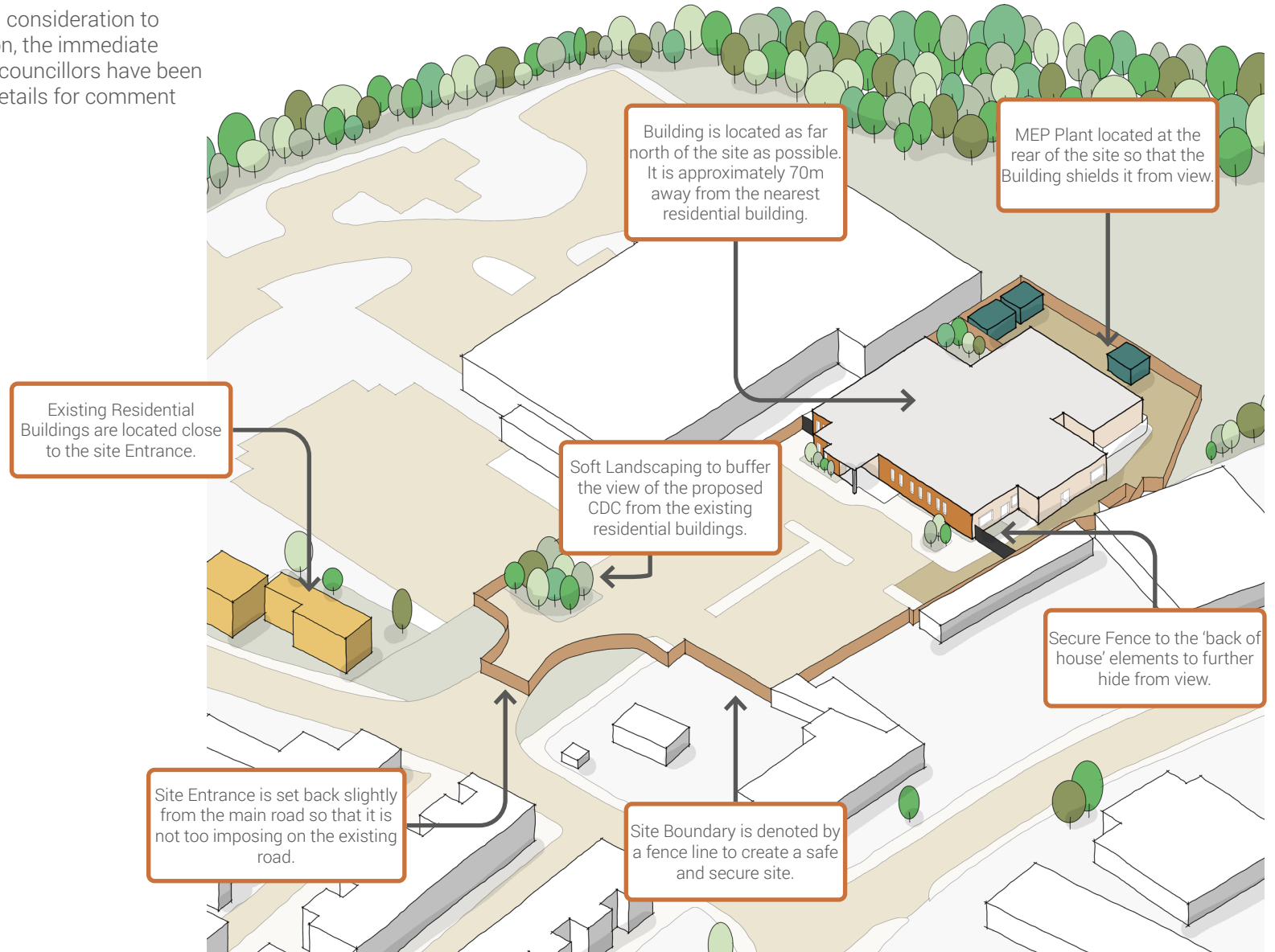
The Existing Site is located on an industrial estate with greenery to the rear. To create a more welcoming environment, softer materiality such as a timber effect has been selected for the main facade. It is hoped that this will achieve a more domestic feel to the building.



# 04 Design Approach

## Contextual Considerations

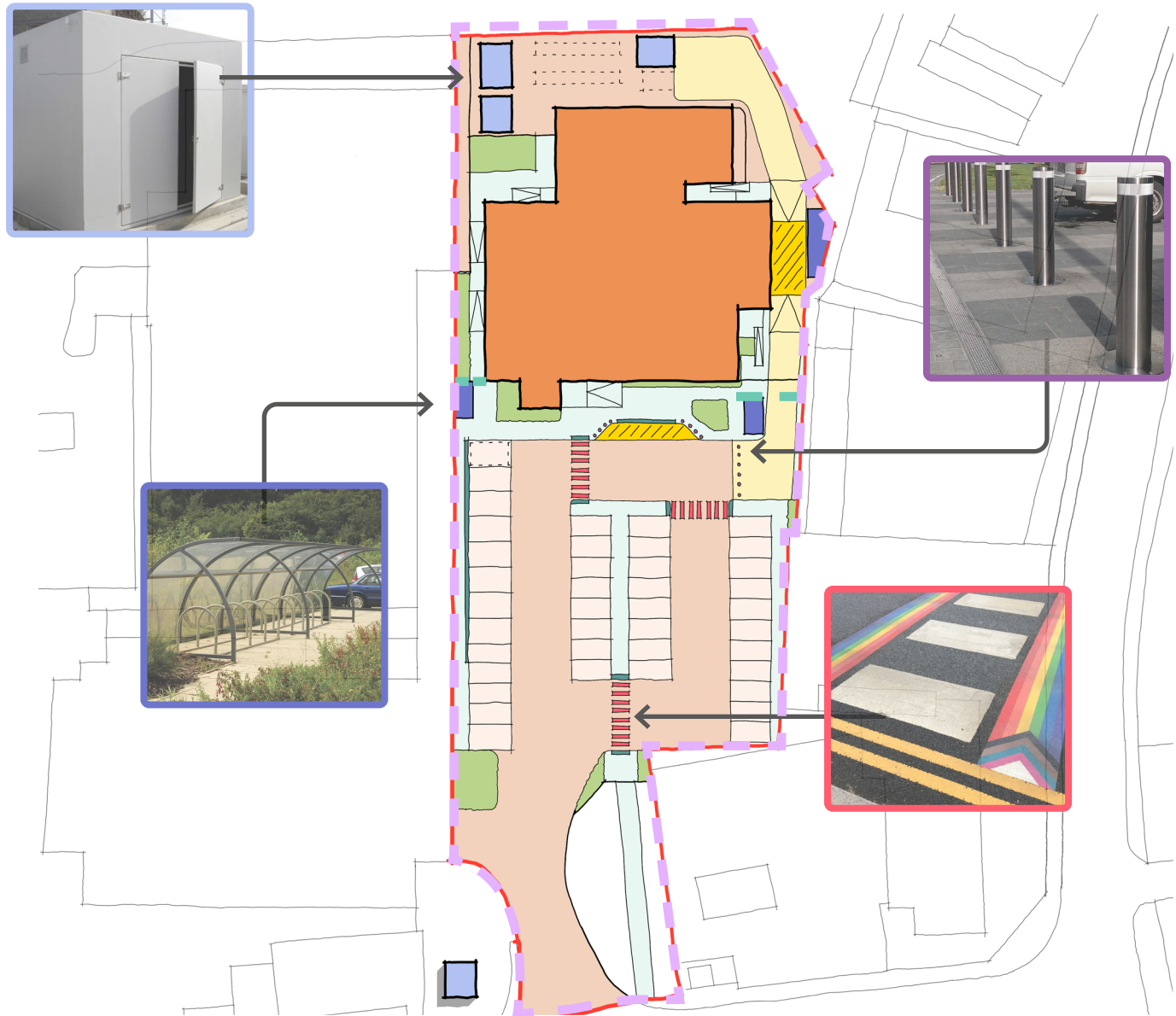
The scheme has been designed with high consideration to the neighbouring buildings. On submission, the immediate residents adjoining the site and the ward councillors have been provided with the proposed masterplan details for comment and consideration.



# 04 Design Approach

## Proposed Landscaping / External Works

- **Timber Fencing**  
Closeboard fence panel.
- **Metal Fencing**  
To match existing fencing around site.
- **New Pavement**  
Mix of 2 light grey tones of natural paving stone.  
(pale grey and light grey).
- **Dropped Kerbs / Tactile Paving**  
Tactile paving to drop kerbs and where appropriate road-crossing places are located.
- **Landscaping**  
TBC by Trust  
Low maintenance soft landscaping
- **Tarmac**  
Proposed upgrade to existing tarmac treatment. Trust to confirm further specification.
- **Shared Surface**  
Proposed road to be used for maintenance only. Trust to confirm finish / specification.
- **Cycle Store and Bin Stores**  
Covered Cycle Storage. Specification to be confirmed by Trust.
- **Bollards**  
Safety Bollards. Specification to be confirmed by Trust.
- **External MEP Requirements**  
GRP Enclosures. Specification TBC by MEP / Trust.
- **Painted Road Markings**  
To indicate pedestrian activity and drop off zone.
- **Pedestrian Crossing**



# 04 Design Approach

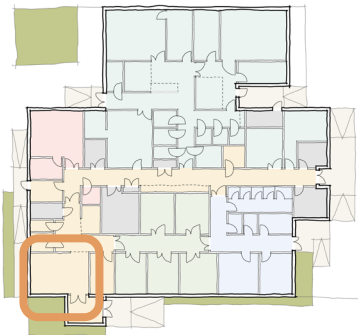
Quality User Experience | **Example Waiting Room**

Internally, the design has been developed to feel as welcoming as possible as a way to make the patient feel comfortable in the surroundings. Small design decisions have been made such as the inclusion of art work to give the building a more domestic feel as opposed to clinical.

Clear signage immediately as you enter the building.

Wheelchair accessible space at reception.

Significant space near Reception to park a wheelchair and moveable furniture to allow for flexibility.



Connections to outdoors through skylight.

Buffered Landscaping zone outside the waiting room for privacy and dignity of patients.

Artwork relating to Skegness / created by local artists to create a domestic feel.

Biophilia brought inside the building to comfort patients.

# 04 Design Approach

Quality User Experience | **Example Changing Facility**

Internally, the design has been developed to feel as welcoming as possible as a way to make the patient feel comfortable in the surroundings. Small design decisions have been made such as the inclusion of art work to give the building a more domestic feel as opposed to clinical.

Clear signage to allow the patient to easily orientate themselves.

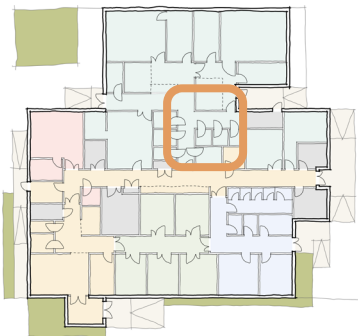
Lockers are provided to let the patients safely store their belongings during their time within the diagnostics department.

Space for hanging coats and bags within the changing facilities.



Ceiling heights set at 2400mm to encourage the domestic feel within the unit.

Artwork relating to Lincoln / created by local artists to create a domestic feel.





# Access and Maintenance

---

Pedestrian, Cyclist and Vehicular Access  
Maintenance Strategy

05



# 05 Access and Maintenance

## Pedestrian, Cyclist and Vehicular Access



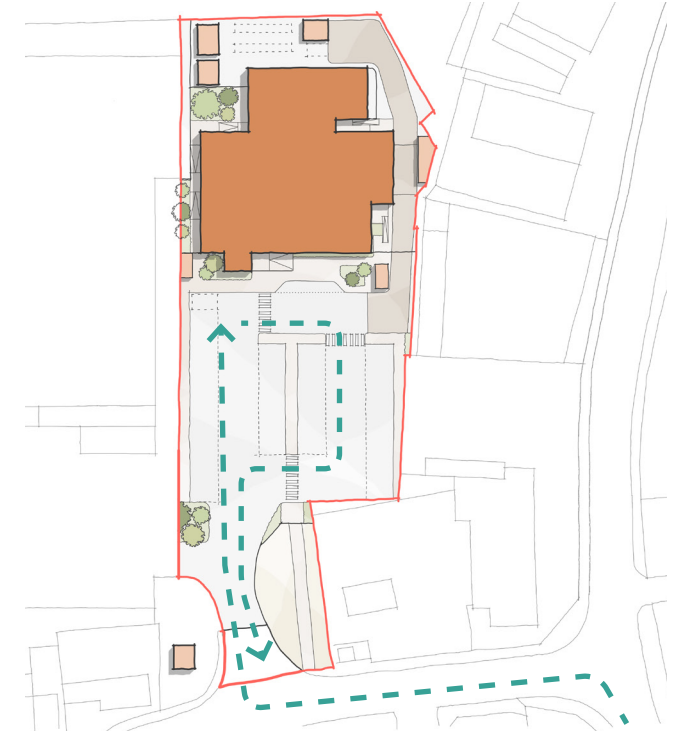
Main Pedestrian Route

The Pedestrian routes into the site have been designed as the priority access. A new path has been created off the main road with pedestrian crossings implemented in the car park to aide a safe journey to site.



Main Cycle Route

Cyclists will be expected to use the car park to get to the building. Provision of two cycle stores will provide a safe place for them to park during their visit.



Main Vehicular Route

The existing entrance has been utilised as the main access point for vehicles. There is a provision of 32 Standard Parking Spaces, 8 Accessible Parking Spaces and a drop-off zone. This is to be shared between staff and patients.

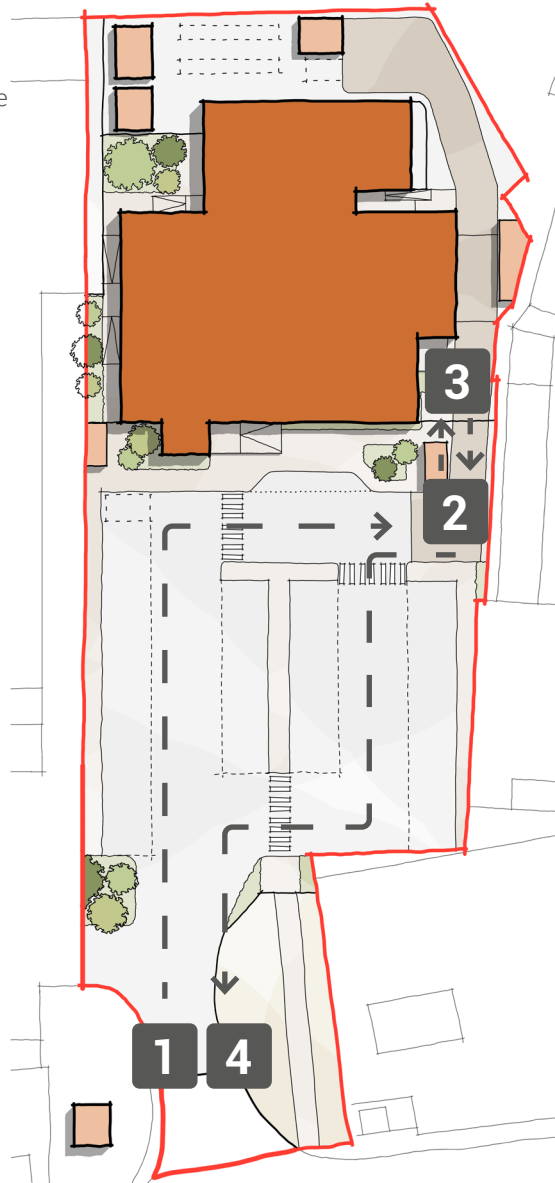


# 05 Access and Maintenance

## Maintenance Strategy

### Deliveries and Waste Collection

1. Maintenance enter the site through the same entrance as staff / patients.
2. If delivering goods or collecting waste, the vehicle uses the enlarged shared surface to reverse the vehicle to the site fence.
3. From this point, deliveries are wheeled to the staff entrance or the waste is collected from the bin store. *There is no need for the full expanse of the road to be used in this circumstance.*
4. Vehicle leaves via the main exit.



### Scanner and MEP Maintenance

1. Maintenance enter the site through the same entrance as staff / patients.
2. Vehicle is allowed through the service yard gate.
3. Space at the back for unloading / maintenance and turning circle for a 7.5t vehicle.
4. Vehicle leaves via the main exit.

