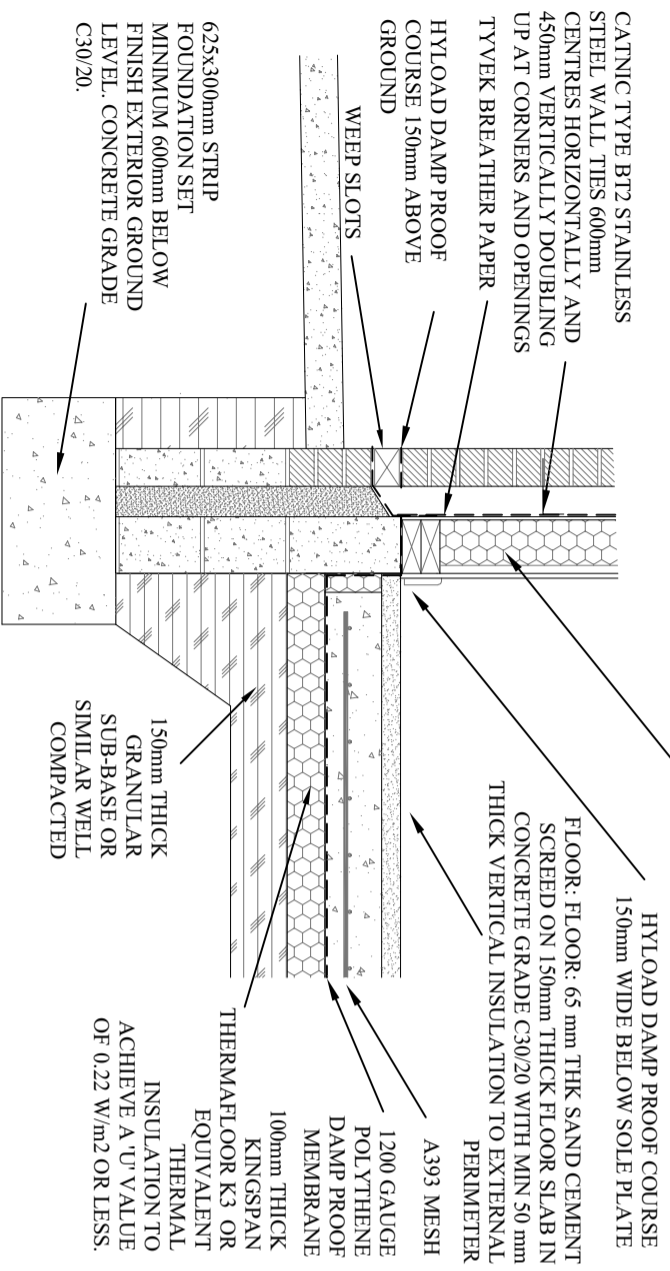
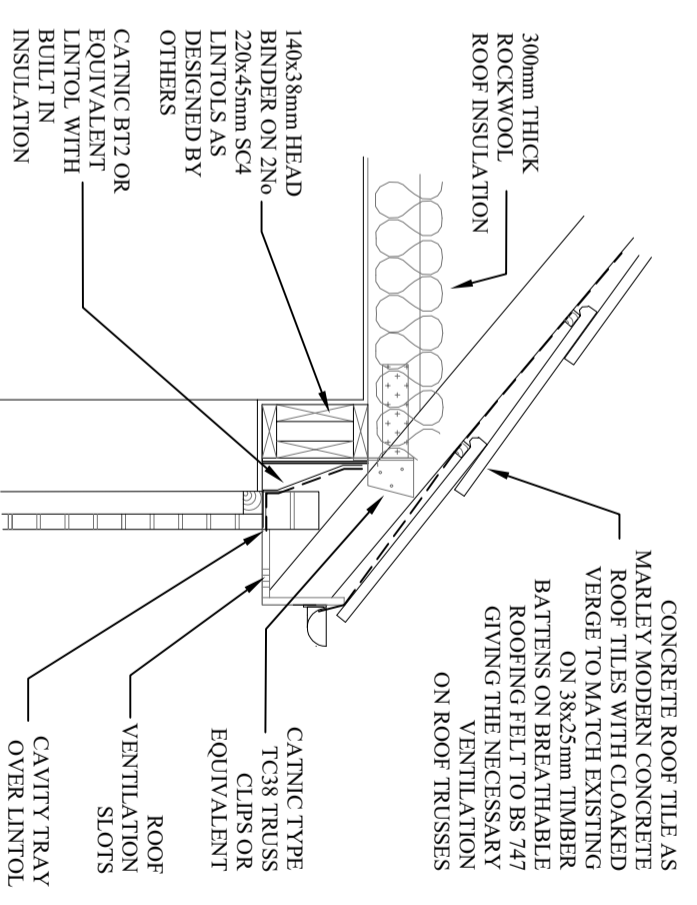


WALL CONSTRUCTION: BELOW GROUND LEVEL - 100mm THICK 7 N DENSE CONCRETE BLOCKWORK EXTERNAL SKIN, 65mm CAVITY FILLED TO GROUND LEVEL WITH LEAN MIX CONCRETE AND 150mm THICK 7 N DENSE CONCRETE BLOCKWORK INTERNAL SKIN OR ALTERNATIVELY SOLID BLOCKWORK TO GROUND LEVEL IF CIRCUMSTANCES ALLOW.

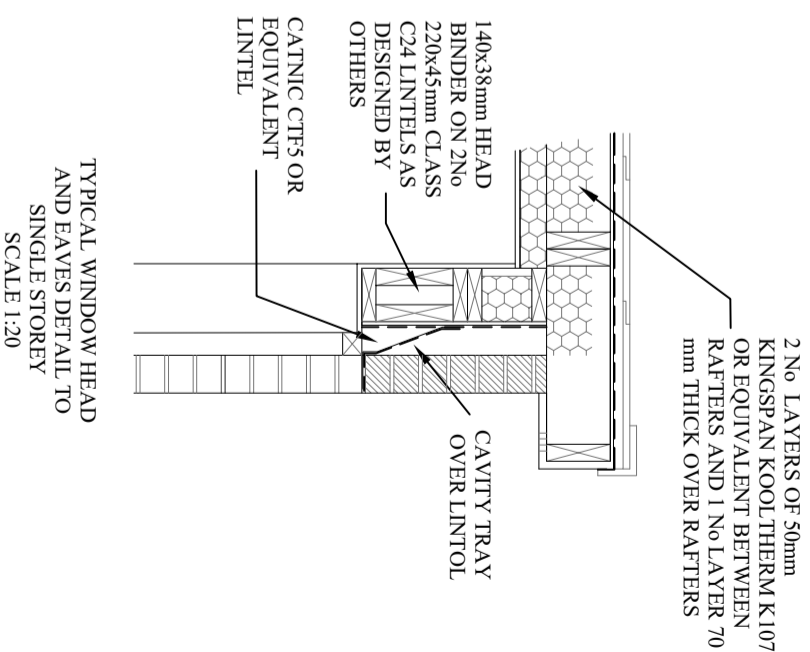
WALLS ABOVE GROUND LEVEL TO BE 100mm THICK FACING BRICKWORK OF PERMITTED ALTERNATIVE TO EXTERNAL SKIN, 65mm CAVITY WITH STAINLESS STEEL TIES AS CATNIC BT2-4 OR EQUIVALENT. INTERNAL SKIN TO BE 140x38mm CLS SOFTWOOD VAC-VAC PRESERVATIVE TREATED AT 600mm CENTRES GENERALLY, 9mm BBA STERLING BOARD, 2 No. 220x45mm CLASS C16 GRADE SOFTWOOD OVER OPENINGS IN LOAD-BEARING WALLS. LINTELS SUPPORTED ON CRIPPLE STUDS TO STRUCTURAL ENGINEER'S RECOMMENDATIONS. AT CENTRE LINE TO LOAD-BEARING INTERNAL PANELS, TYVEK BREATHER PAPER FACTORY FITTED TO EXTERNAL FACE OF PANELS. USING POLYPROPYLENE TAPE AND STAPLES, OVERLAPS ARE ALLOWED TO COVER THE JUNCTION WITH ADJOINING PANEL OR FLOOR CONSTRUCTION. THE VERTICAL POLYPROPYLENE TAPE DESIGNATED VERTICAL STUD POSITIONS. THE STAINLESS STEEL WALL TIES SECURED BY OTHERS (SPEC AND CALCULATIONS SHOULD ONLY BE LOCATED AT A VERTICAL STUD POSITION AS SPECIFIED BY OTHERS (SPEC AND CALCULATIONS SUPPLIED ON REQUEST) INSULATED WITH 2 No LAYERS OF KINGSPAN KOOLTHERM K12 THERMAL INSULATION BOARD TO ACHIEVE A 'U' VALUE OF 0.15 W/m<sup>2</sup>K OR LESS. 500 mm GAUGE MEMBRANE TO BE INCLUDED TO INTERNAL FACE OF TIMBER FRAME.



TYPICAL FOUNDATION DETAIL  
SCALE 1:20



TYPICAL WINDOW HEAD AND EAVES DETAIL  
SCALE 1:20



TYPICAL WINDOW HEAD AND EAVES DETAIL TO SINGLE STOREY  
SCALE 1:20

NOTE: ALL DIMENSIONS IN MILLIMETRES UNLESS SHOWN OTHERWISE.

project title <b>PROPOSED EXTENSION &amp; LOFT CONVERSION AT 34 DRUM TOWER VIEW, CAERPHILLY.</b>	drawing title <b>CROSS SECTIONAL DETAILS</b>	scale As Shown	date Nov'23	drawn 108	checked
---	---	-------------------	----------------	--------------	---------