

**BMI Ross Hall Clinic Braehead
Proposed External Signage**

December 2023



Health Group



Illuminated signage at night



Signage during the daytime

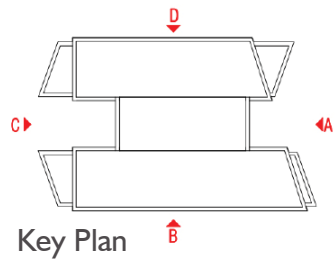
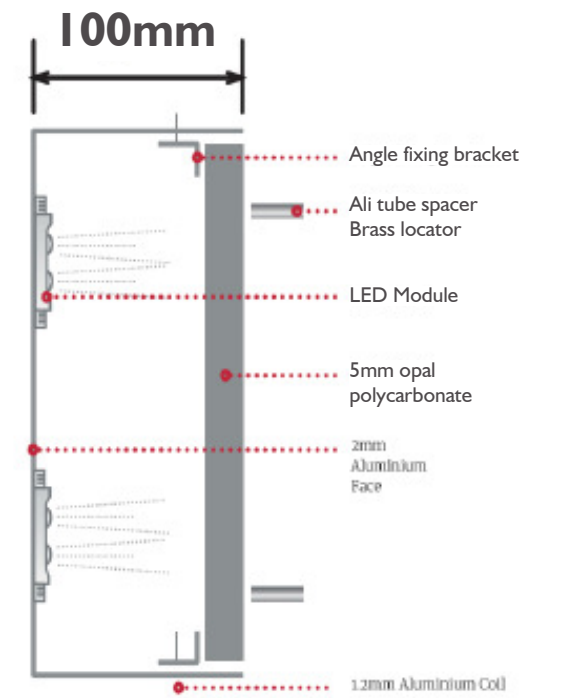
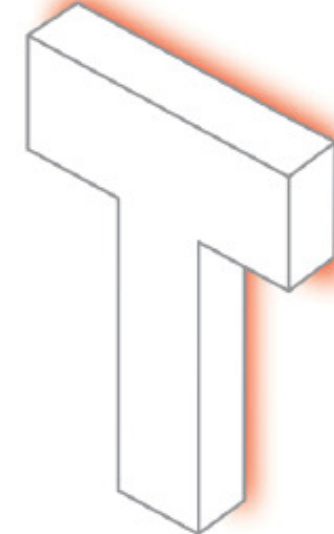
BUILT-UP LETTERS – HALO ILLUMINATED

The letters are illuminated from the reverse, providing a soft glow around the outer edges which is bright and vivid in darkness.

-All letters supplied powder coated to a colour of Hex#1899f5.

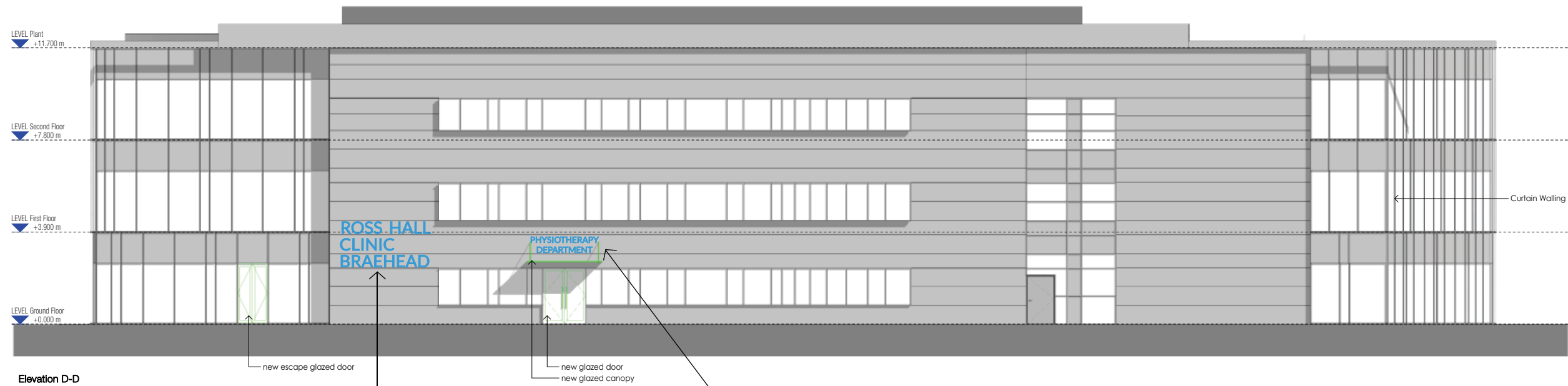
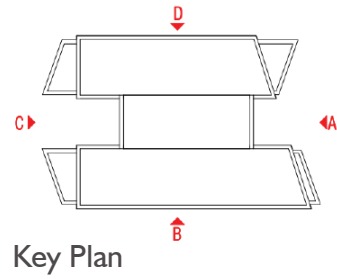


Signage Colour : Hex#1899f5



BMI Ross Hall Clinic Breahead

Elevation D-D 1:200 @ A3



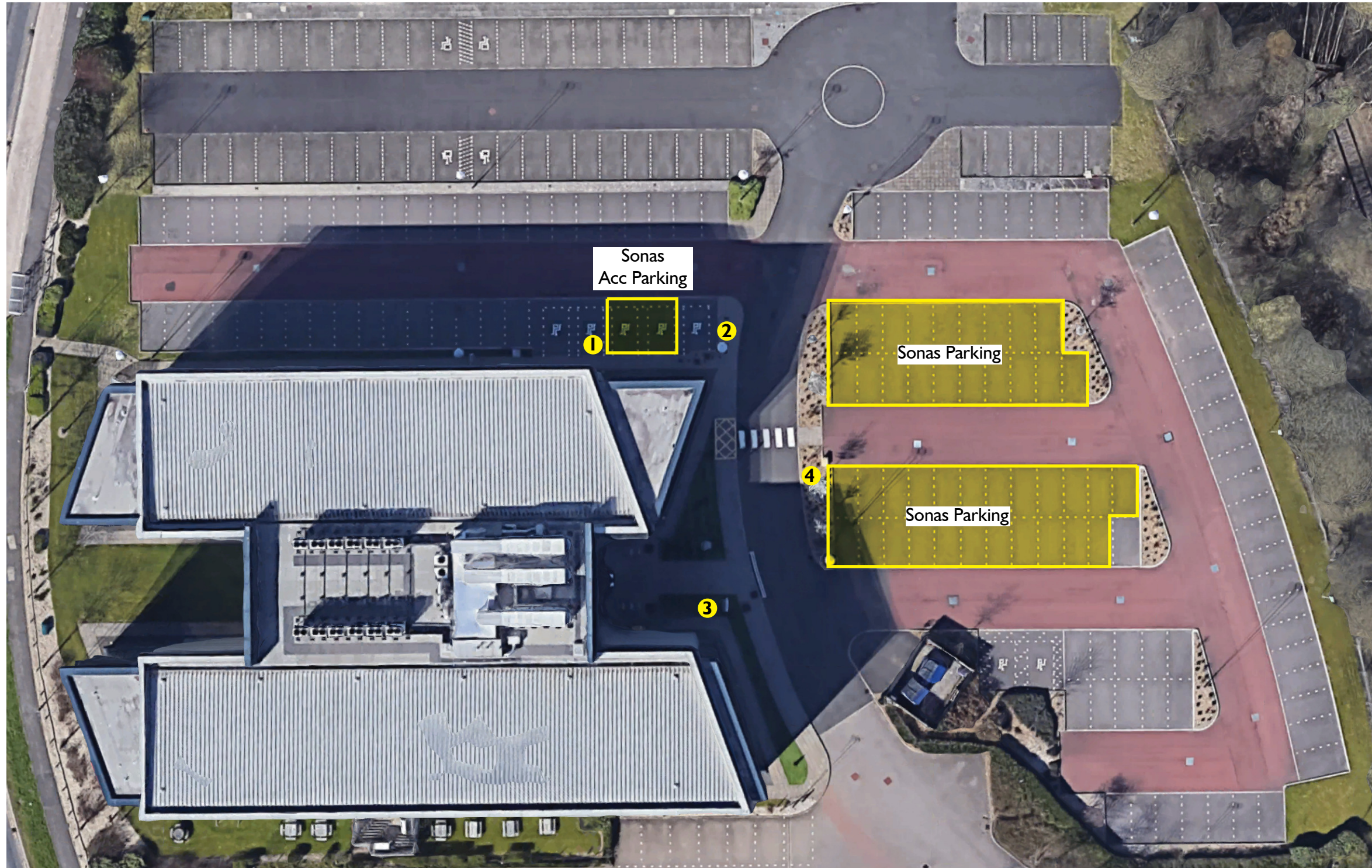
Proposed illuminated signage to match the one on the opposite building across the road.

Proposed illuminated signage

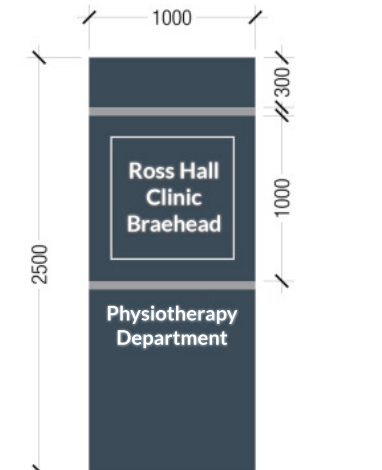
Level of Illumination: 320Cdm²

BMI Ross Hall Clinic Braehead

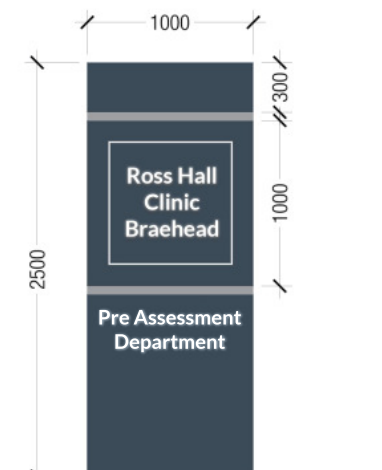
Site Plan & Signage



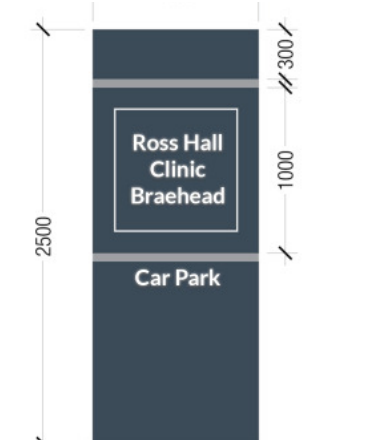
1. Accessible Parking identified by having the initials of the hospital "RHCB" painted on the block pavement



2. Physiotherapy Department Totem



3. Pre Assessment Department Totem



4. Car Park Totem

Depth of the Totems is approx: 170mm
 Totem Signage: Backlit Halo Illuminated
 Level of Illumination: 320Cdm²