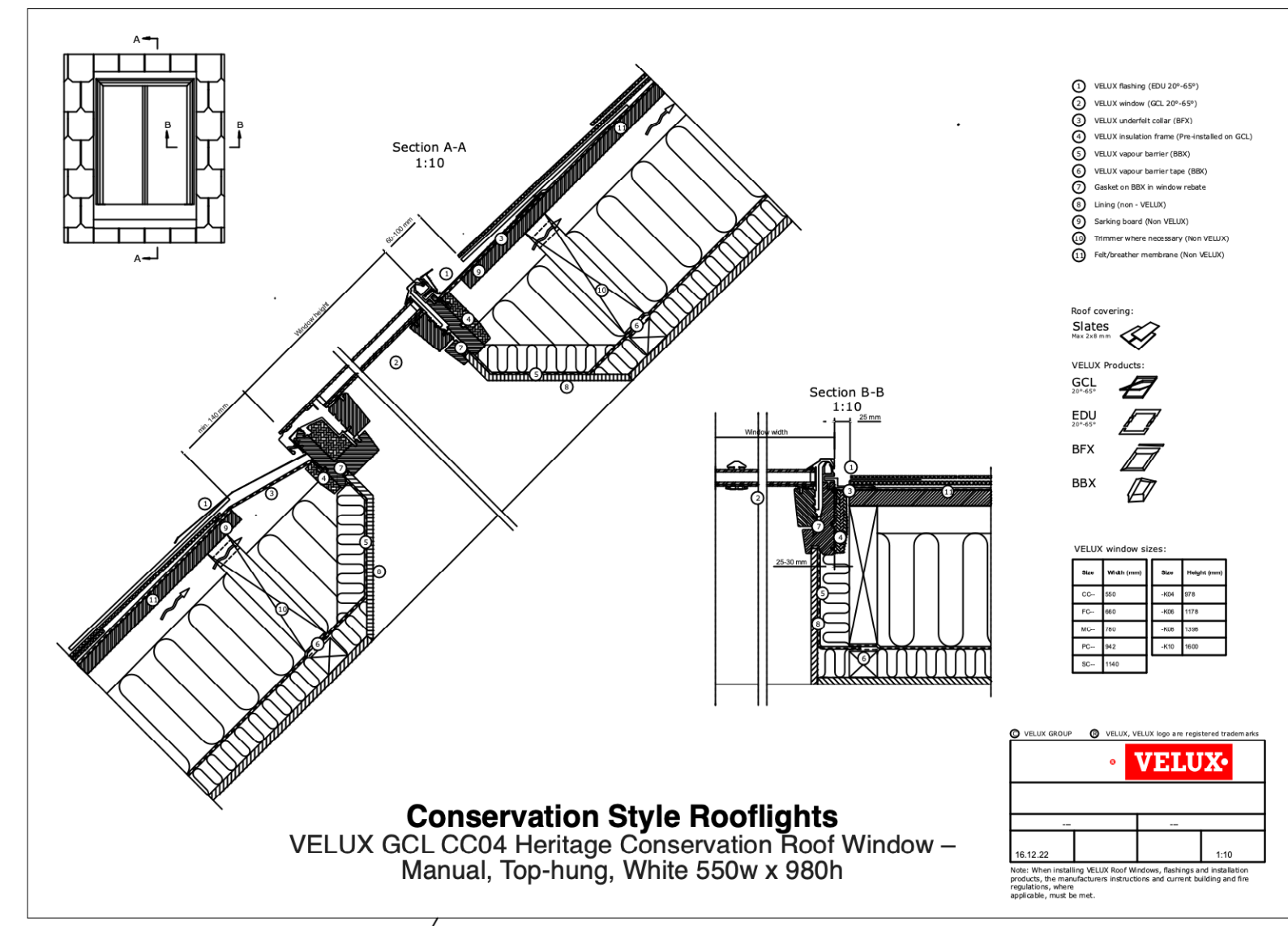
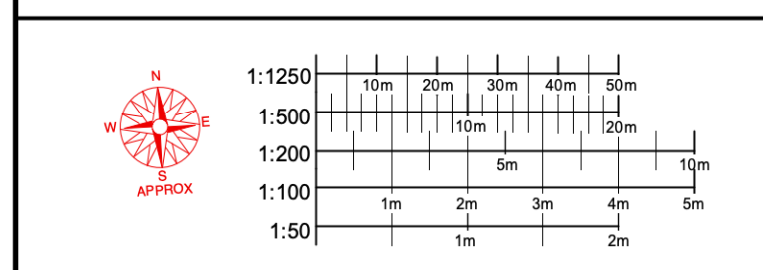


- 1 **STONE WALLING:**
Sawn-on-bed ironstone walling variegated sizes with lime mortar to Walls.
- 2 **WINDOWS:**
Double glazed units within flush painted timber frames
- 3 **DOORS:**
Aluminium frames with double glazed units
- 4 **RAINWATER GOODS:**
Black Cascade Cast Iron Style plastic rainwater goods
- 5 **ROOFING:**
Standing Seam metal Roofing, fully ventilated cold roof
- 6 **ROOFLIGHTS:**
Conservation Style, flush fitted between the rafters
- 7 **PORCH:**
Simple wall mounted porch, painted timber and slate.
- 8 **FRONT DOOR:**
Painted timber door with 6 glass panes



The copyright of this drawing is vested in the Architect/ Designer and must not be copied or reproduced without his written consent. Figured dimensions only to be taken from this drawing. All contractors and / or specialists must visit the site and be responsible for taking and checking all dimensions relative to this work.



GENERAL NOTES

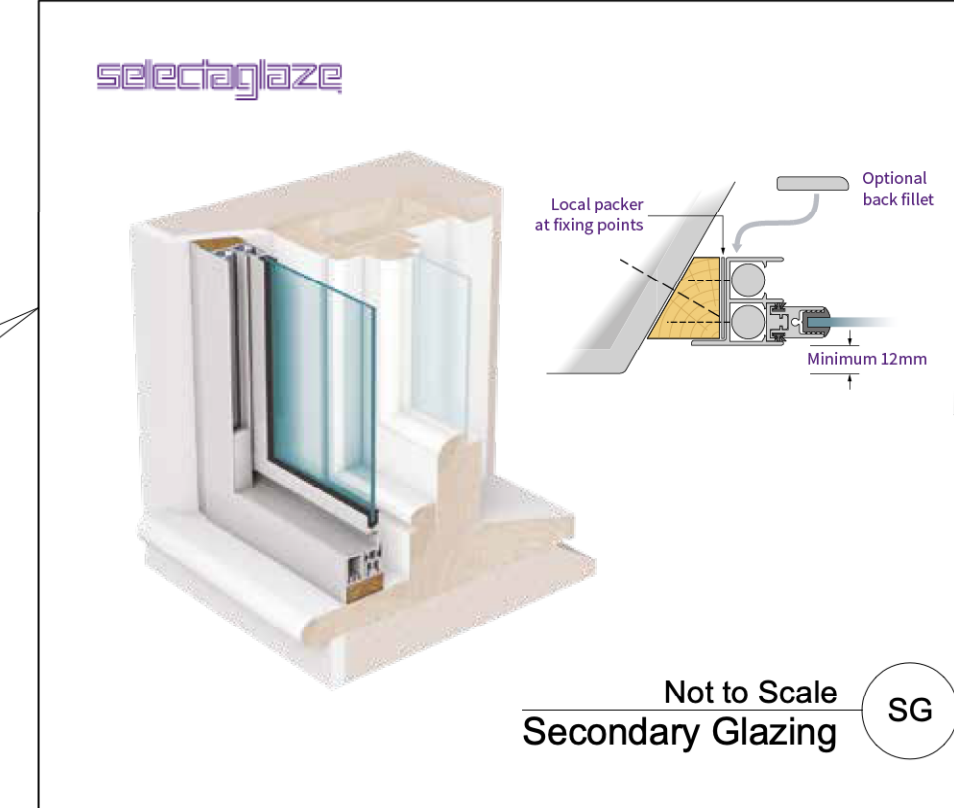
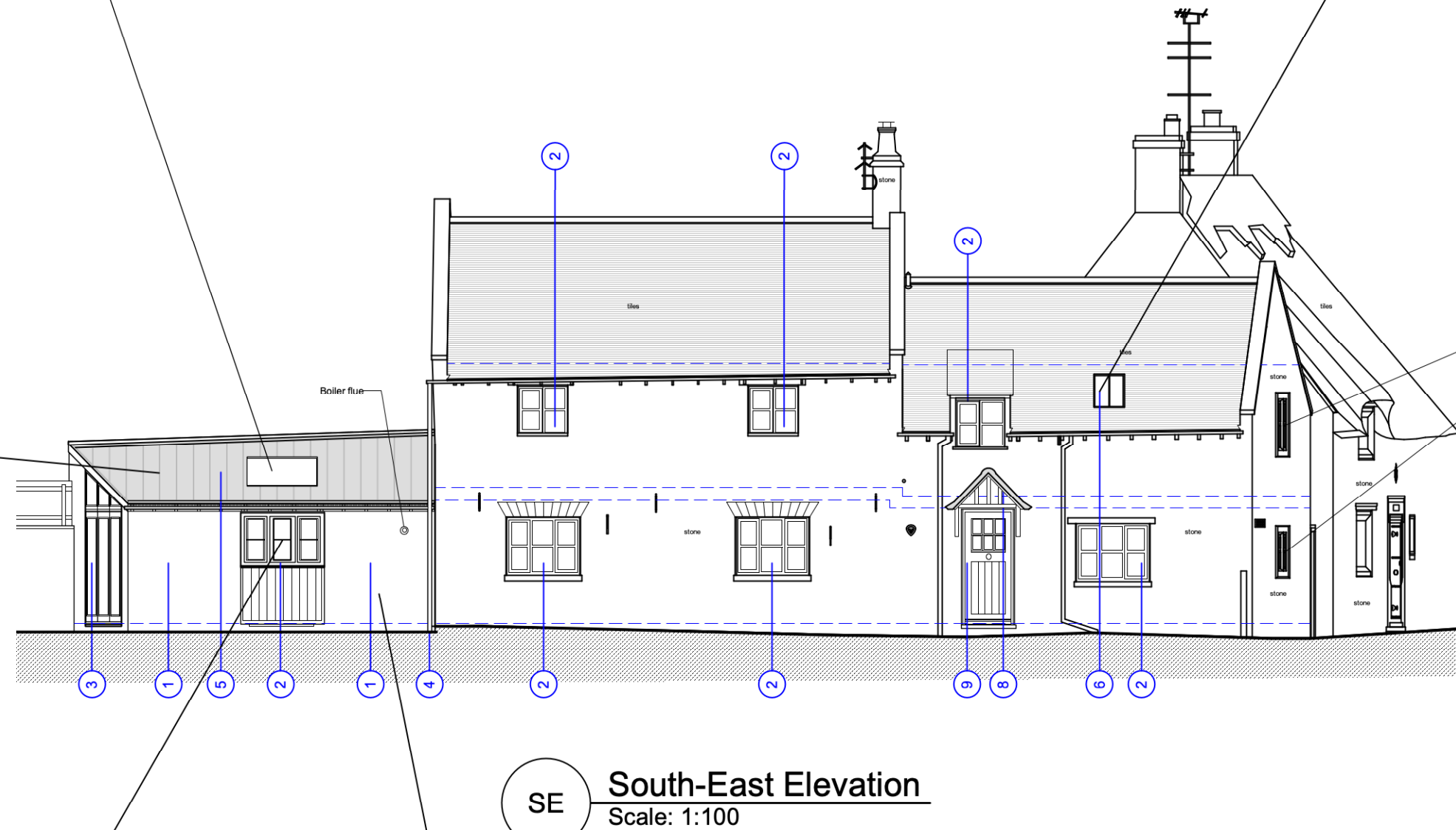
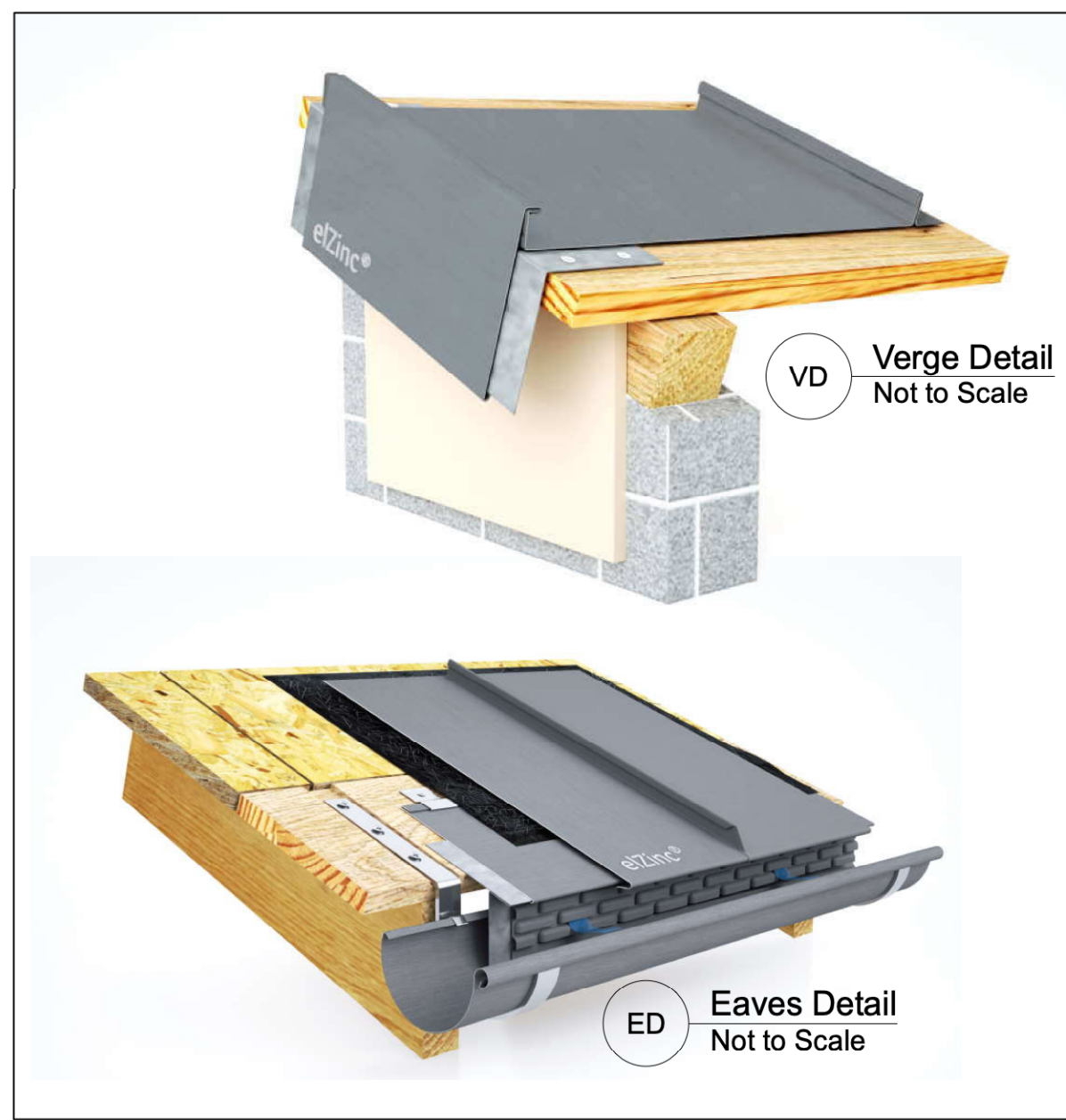
- This drawing is to be read in conjunction with all other consultants engineers and specialist sub contractors drawings. All items are to be cross referenced throughout design, tender, construction.
- Any discrepancies whatsoever discovered must be reported to the CA or Concept Zero Architects as soon as they become apparent.
- The main contractor is responsible for checking all dimensions prior to commencement of work. DO NOT SCALE FROM THESE DRAWINGS.
- All specified manufacturers are o.s.a. (or similar approved) o.e.a. (or equal approved) whether stated or not. Any equivalent product or manufacturer must be approved in writing by the CA (Contract Administrator) before use.
- Grid Lines are generally inside face of blockwork
- All movement joints are 10mm wide and contained within vertical brickwork perpends. For movement joints within structural frame refer to structural engineers drawings.
- All steelwork shown on these drawings is based on structural philosophy it is to be fully designed, detailed, dimensioned by others. Refer to structural engineers plans for up to date structural design. Refer to setting out plans for grid lines and brickwork setting out.

CDM Hazard Identification

1. Working at height and proximity to rooflights, contractor to provide safety anchors where required.

2. Large areas of glass. Where glass units are over 20Kg/m3 appropriate lifting methods / devices to be used in accordance with manual handling operators regulations 1992 and contractor to provide method statements where required.

Notes:

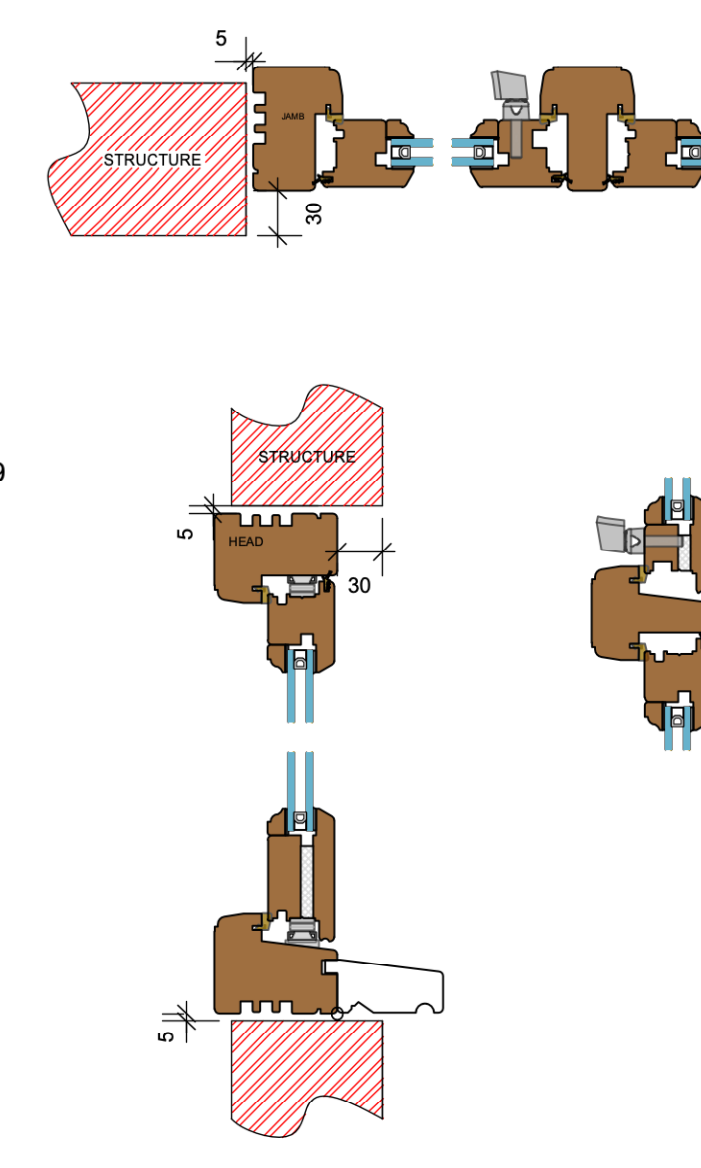


Conservation Style Timber Casement Windows
NBS SPECIFICATION:

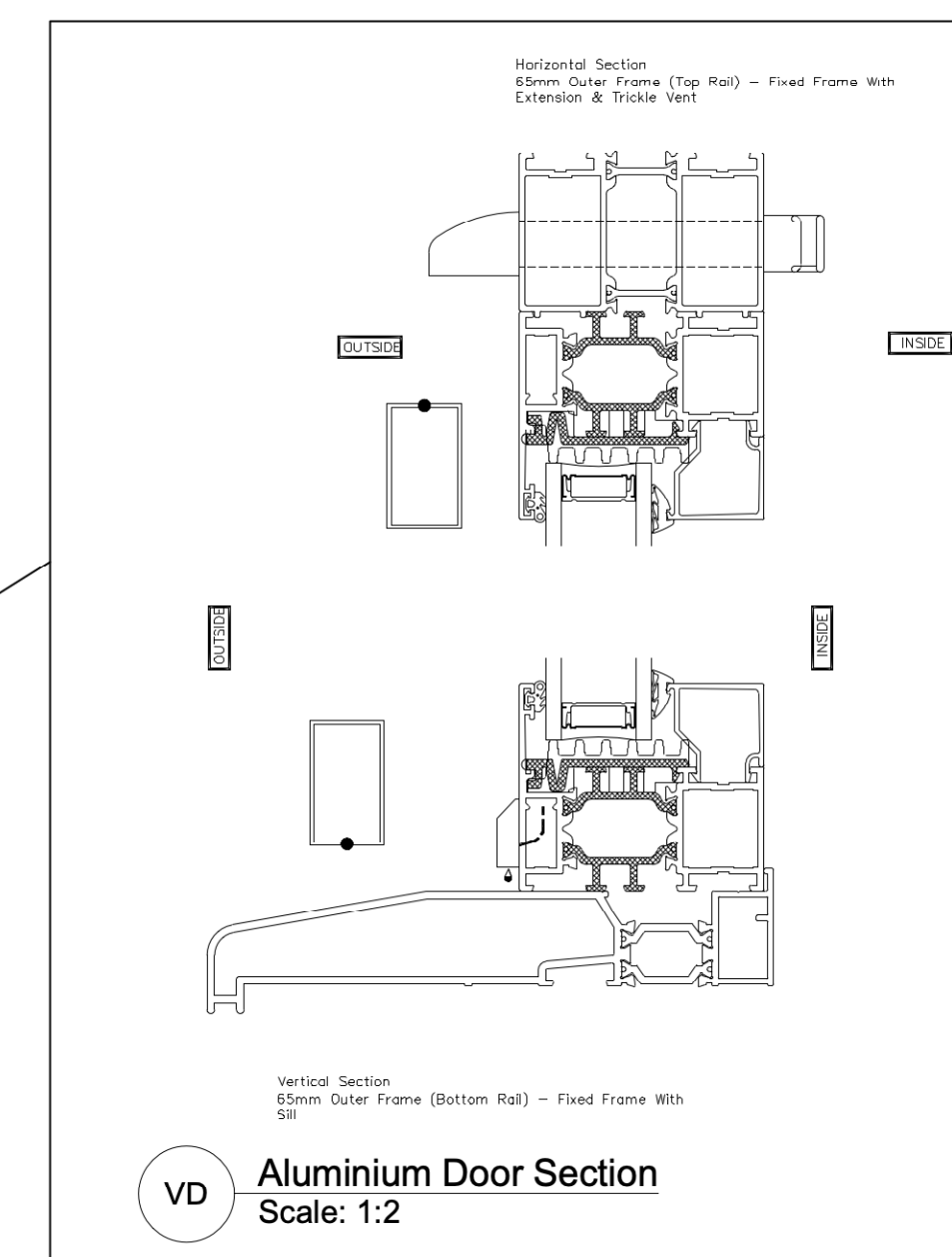
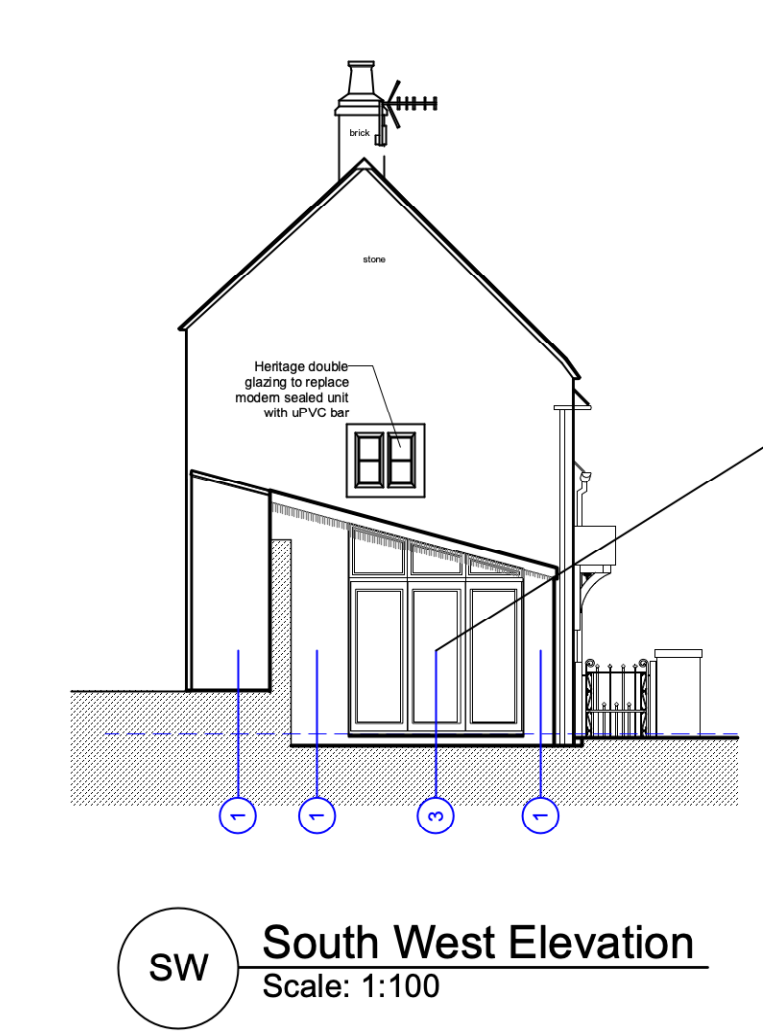
L10 - Windows / Rooflights / Screens / Louvres

- FLUSH CASEMENT TIMBER WINDOW
- Standard: To BS 644: 2012
- Manufacturer: TBC
- Certification: Quality: EN ISO 9001: 2015; Environmental: EN ISO 14001: 2015; Health & Safety: EN ISO 45001: 2018
- Exposure Rating to BS 6375-1: 2015 - 2000
- Air Permeability: Class 4 (600Pa)
- Weather Tightness: Class 9A (600Pa)
- Resistance to Wind Load: Class C5 (2000Pa)
- Operation & strength characteristics: To BS6375-2: 2009
- Timber: Generally, to BS EN 942: 2007
- Species: Engineered Redwood / Engineered Grandis / Engineered Oak / Accoya
- Appearance class: J10 for glazing beads, drips and similar. J40 or better for all other members.
- Moisture content on delivery: 10-16%
- Certification: FSC chain of custody
- Finish: Fully Finished with manufacturer paint system (4 coats on opaque / 3 coats on translucent)
- Colour: White
- Guarantee: 10 years Opaque; 7 years stain
- Thermal performance (Uwindow maximum): 1.4 W/m2K
- Acoustic performance: 38 dB
- Glazing System: Traditional Drained and Vented
- Glazing details: Factory glazed to meet performance specification
- Glazing unit: To meet performance specification
- g value: <= 0.6
- Light transmittance: >70%
- Ironmongery/Accessories: Opening windows fitted with security espagnolette locking, night vent position and locking handle.

Timber Windows
Scale: 1:5



1. Sawn on Bed Ironstone Walling Stone



Rev	Date	Revision	Author
P4	14/12/23	Velux size added	JAO
P3	08/12/23	Scale & detail amended	JAO
P2	17/11/23	Amended following client comments	JAO
P1	10/11/23	Initial Issue	JAO

Status	1. Scheme Design	2. Planning	3. Building Regulations	4. Construction

Client: Claire Smith & Matthew Blake

Job Ref: The Laurels, Lyddington

Dwg Title: Proposed Details Planning

Drawn: JAO Date: 10/11/2023 Scale: Size As Shown printed @ A1

Job Number	Category	Sub Category	Document Number	Revision
CZ417	02	04a	102	P4