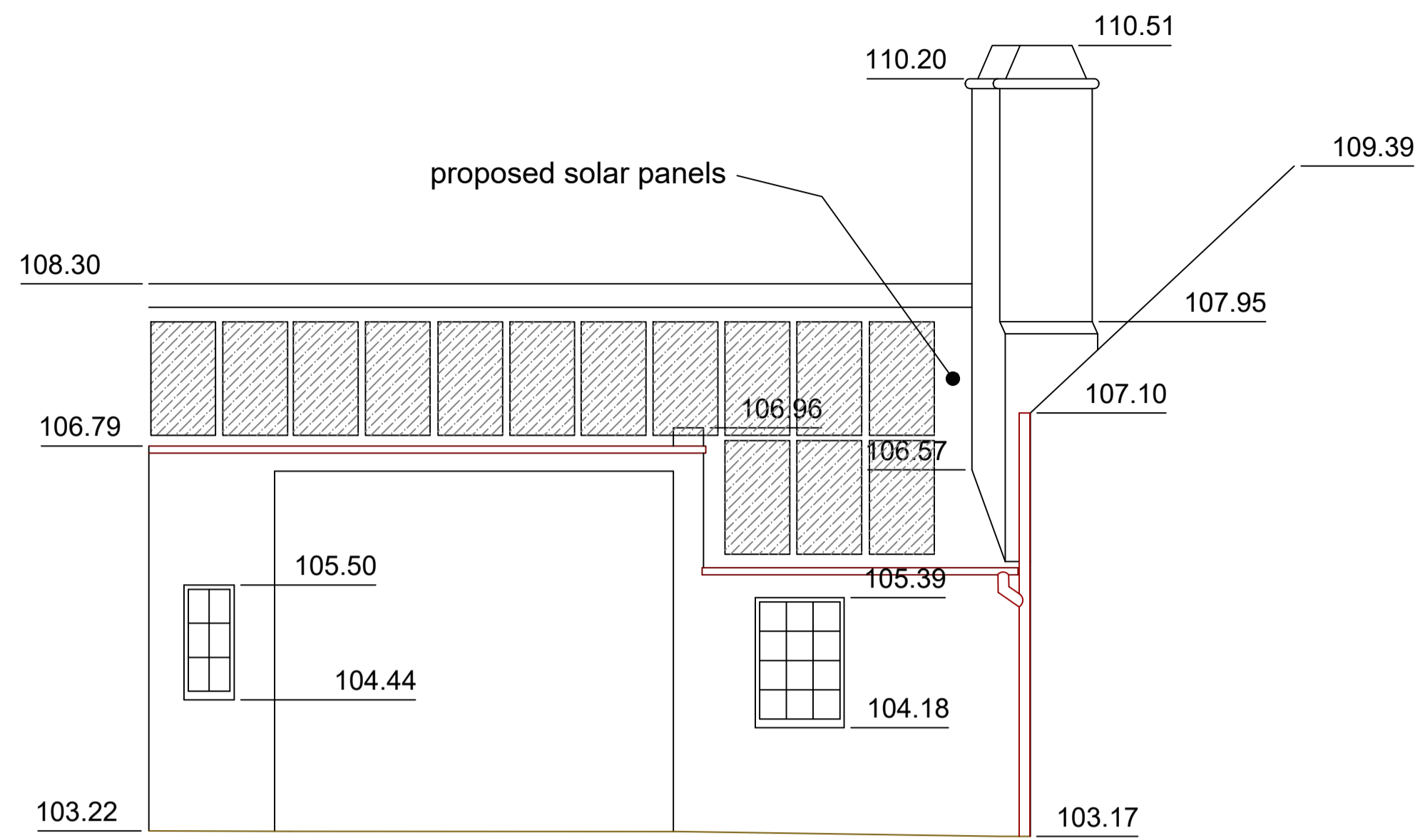
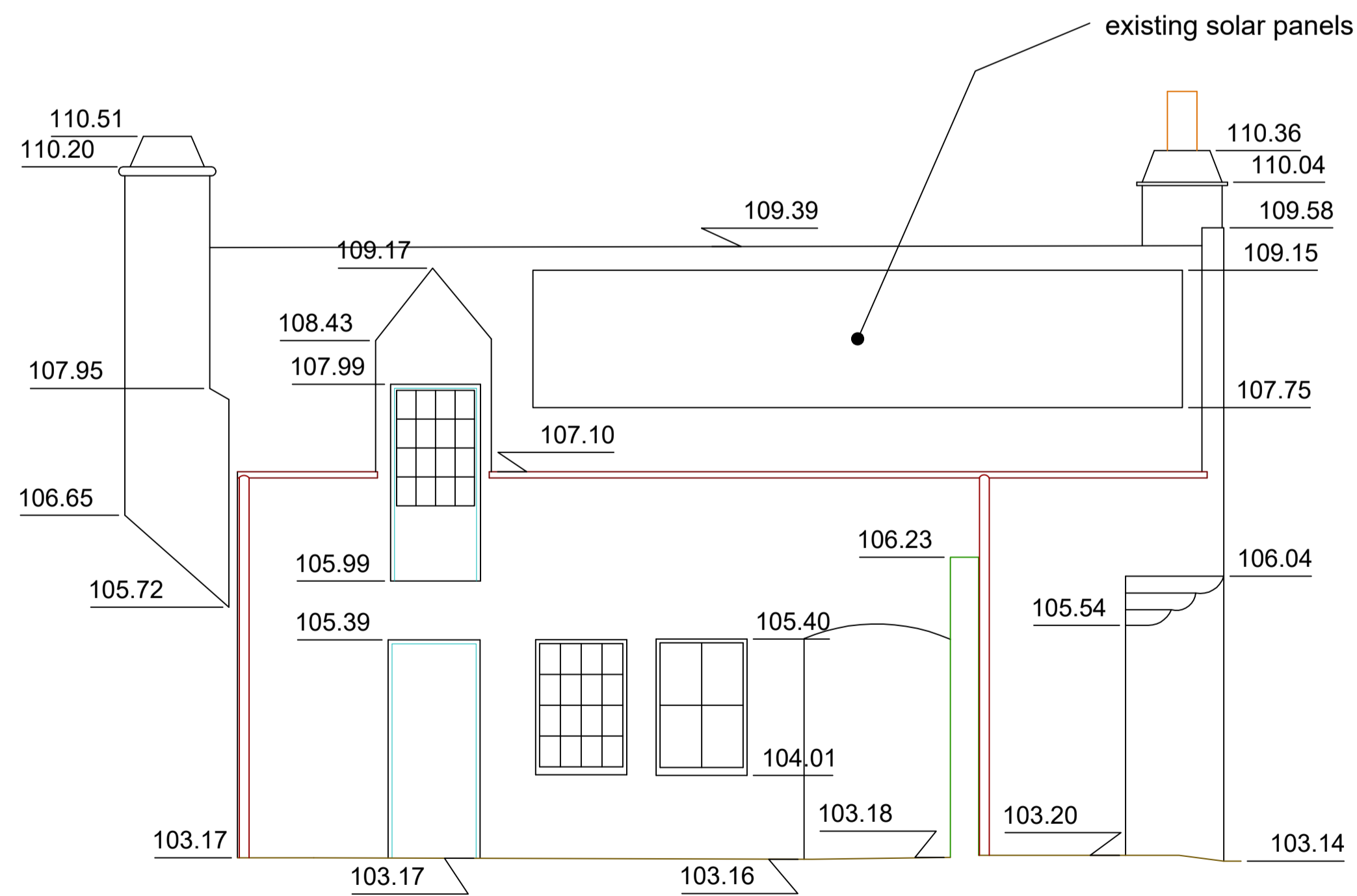
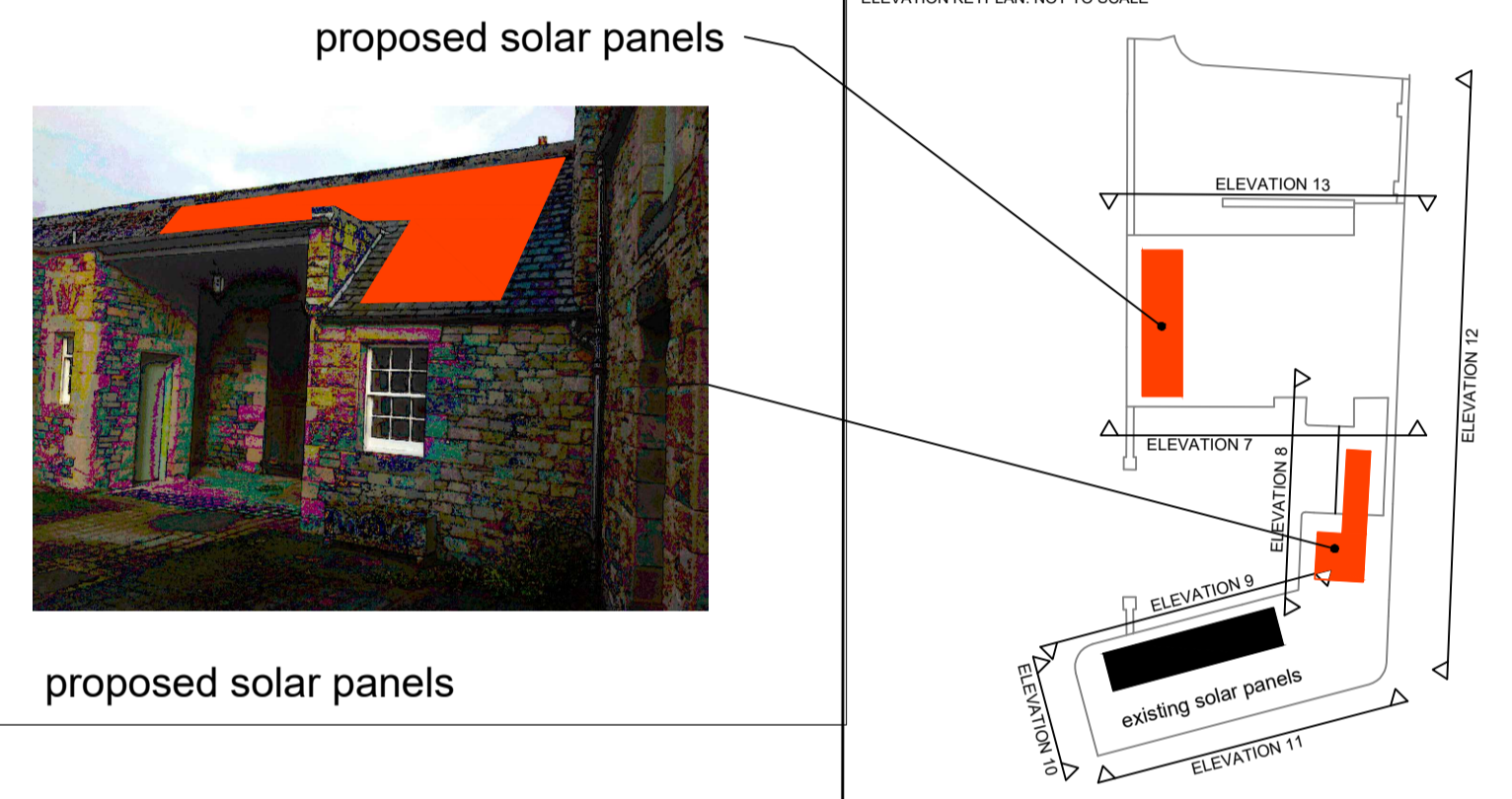


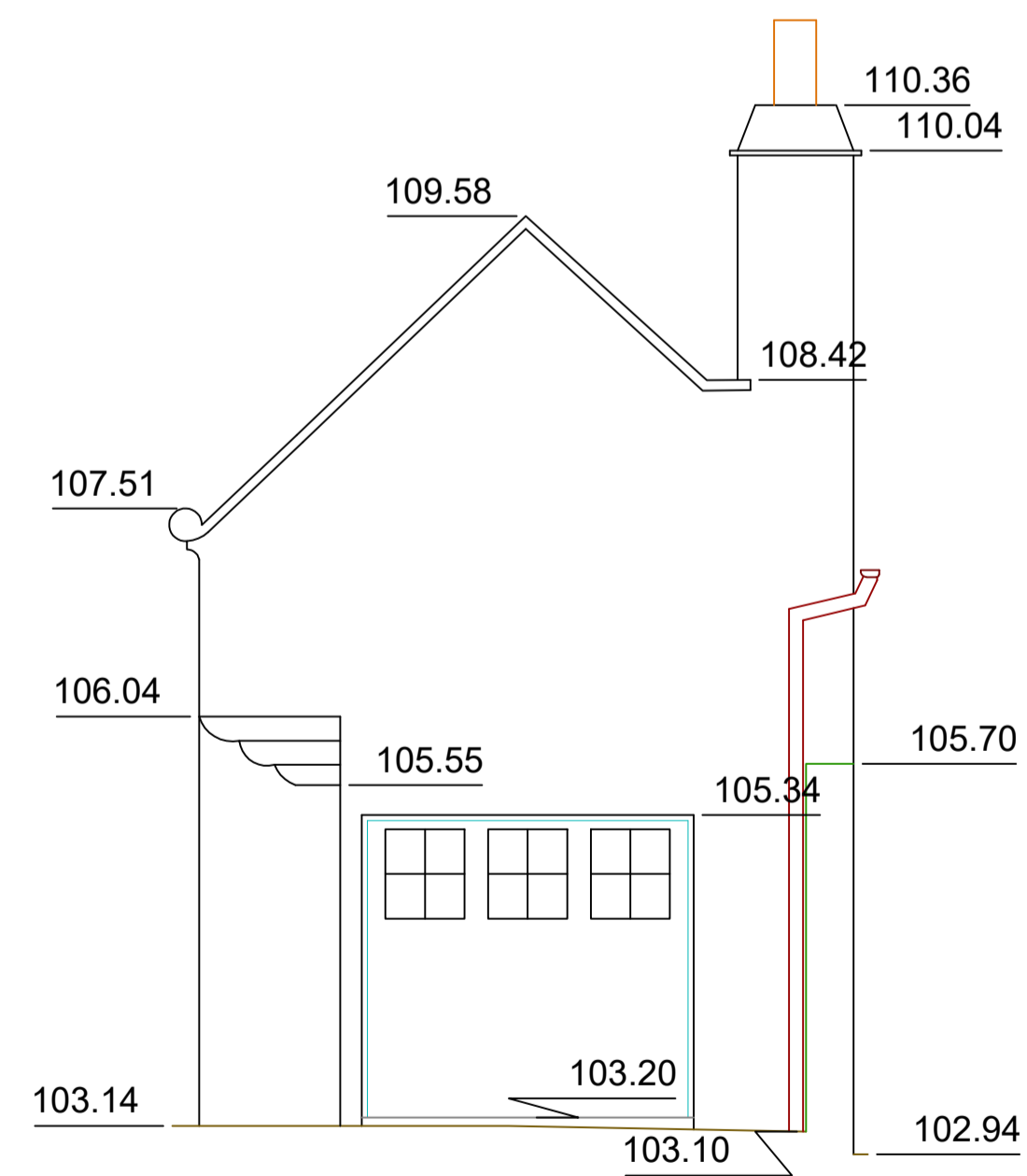
ELEVATION 7



ELEVATION 8



ELEVATION 9



ELEVATION 10

NOTES

- i) All survey levels are related to OS Datum. (National GPS Network).
- ii) Whilst Aidan Hume Design has made every effort to locate all topographical and building features we cannot accept responsibility for any features which may be omitted if they are obscured from view for any fixed or temporary reason at the time of the survey taking place.

LEGEND

AV - Air Valve	MC - Mercury Cover
BW - Benchhole	MH - Manhole
B - Boltard	MKR - Marker
BT - British Telecom Cover	MP - Mooring Post
C - Cover (unknown service)	MR - Mooring Ring
CL - Cell Level	OBM - O.S. Benchmark
COL - Column	OHV - Overhead Wires
CT - Cable Telecom Cover	OTB - O.S. Trig Point
D - Drain	P - Post
DK - Drop Kerb	PM - Parking Meter
EC - Electricity Cover	PXN - Elec. Pylon
EL - Eaves Level	RE - Rodding Eye
EP - Electricity Pole	RL - Ridge Level
ER - Earth Rod	RS - Road Sign
FH - Fire Hydrant	SP - Sign Post
FL - Floor Level	SV - Sluice Valve
G - Gully	T - Toby
GAS - Gas Cover	TPIT - Tilt Pit
GPO - Post Office Box	TL - Traffic Lights
GT - Gas Toby	TP - Telegraph Pole
IC - Inspection Cover	TV - Cable T.V. Cover
IL - Invert Level	VP - Vent Pipe
KL - Keep Left Bollard	WG - Water Cover
LB - Lighting Bollard	WH - Wall Head Level
LL - Lintel Level	WL - Water Level
LP - Lamp Post	WM - Water Meter
LT - Lighting Tower	WT - Water Toby

ELEVATION KEYPLAN: NOT TO SCALE

AH Aidan Hume Design
Architectural Services

113 Channel Street
Galashaleis
TD1 1BN
email:- aidan.ahdesign@outlook.com
tel:- 07792 599543 or 07788 420822

Project:
**PROPOSED SOLAR PANEL
BRAEHEAD HOUSE
ST BOSWELLS
MELROSE
TD6 0AZ**

Client:
Robin Das & Gillian Wheeler

Title:
**GARAGE & OUTBUILDING
ELEVATIONS 7-10 (as existing)**

Scale: 1:50 Paper size: A1 Drawn by: Date: May 2023

Project no: Drawing no: Issue: **AH058 SP01 A**

© Aidan Hume Design Ltd. This drawing should not be copied or reproduced, or used for other than the noted project, without prior consent.