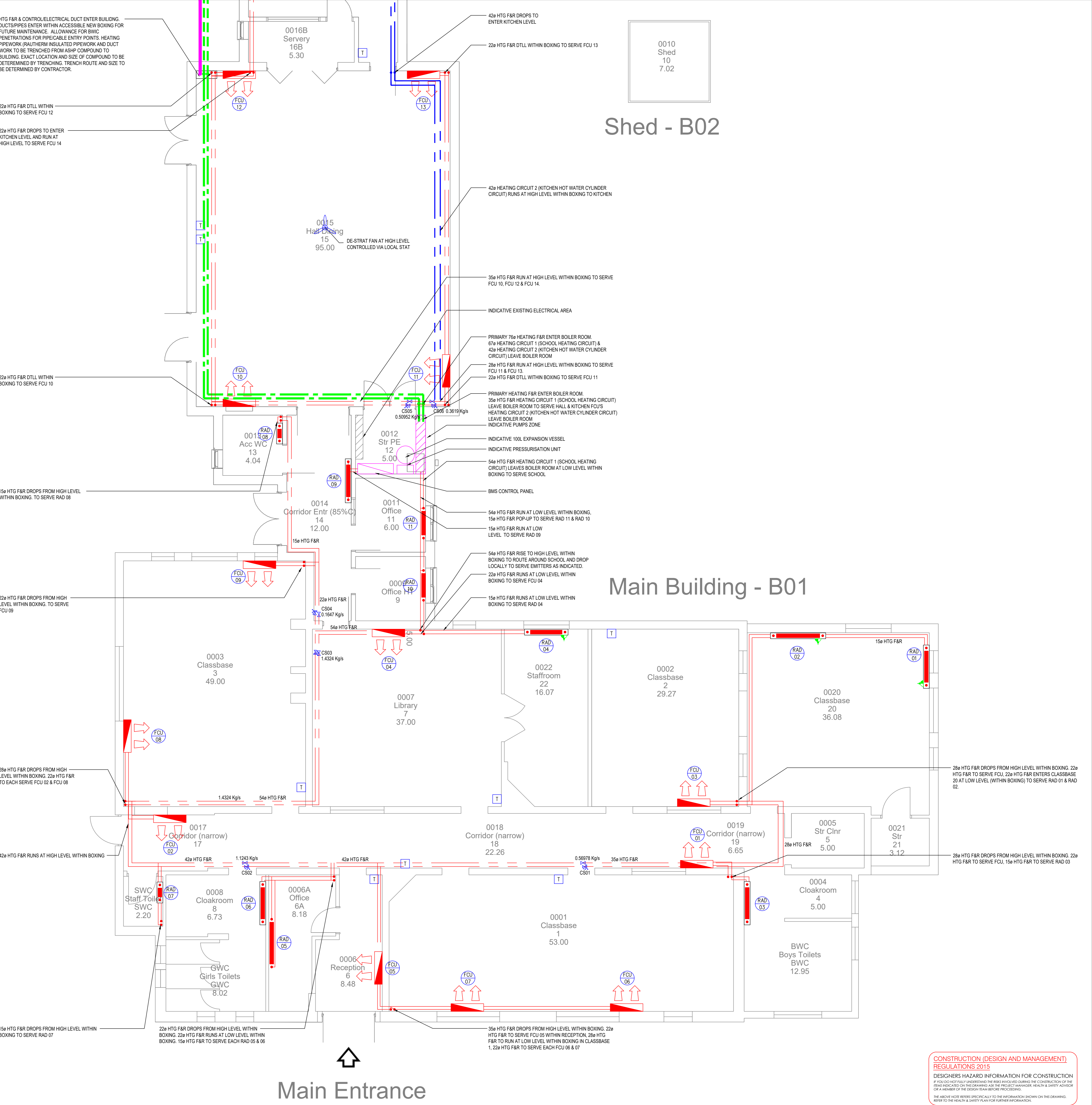
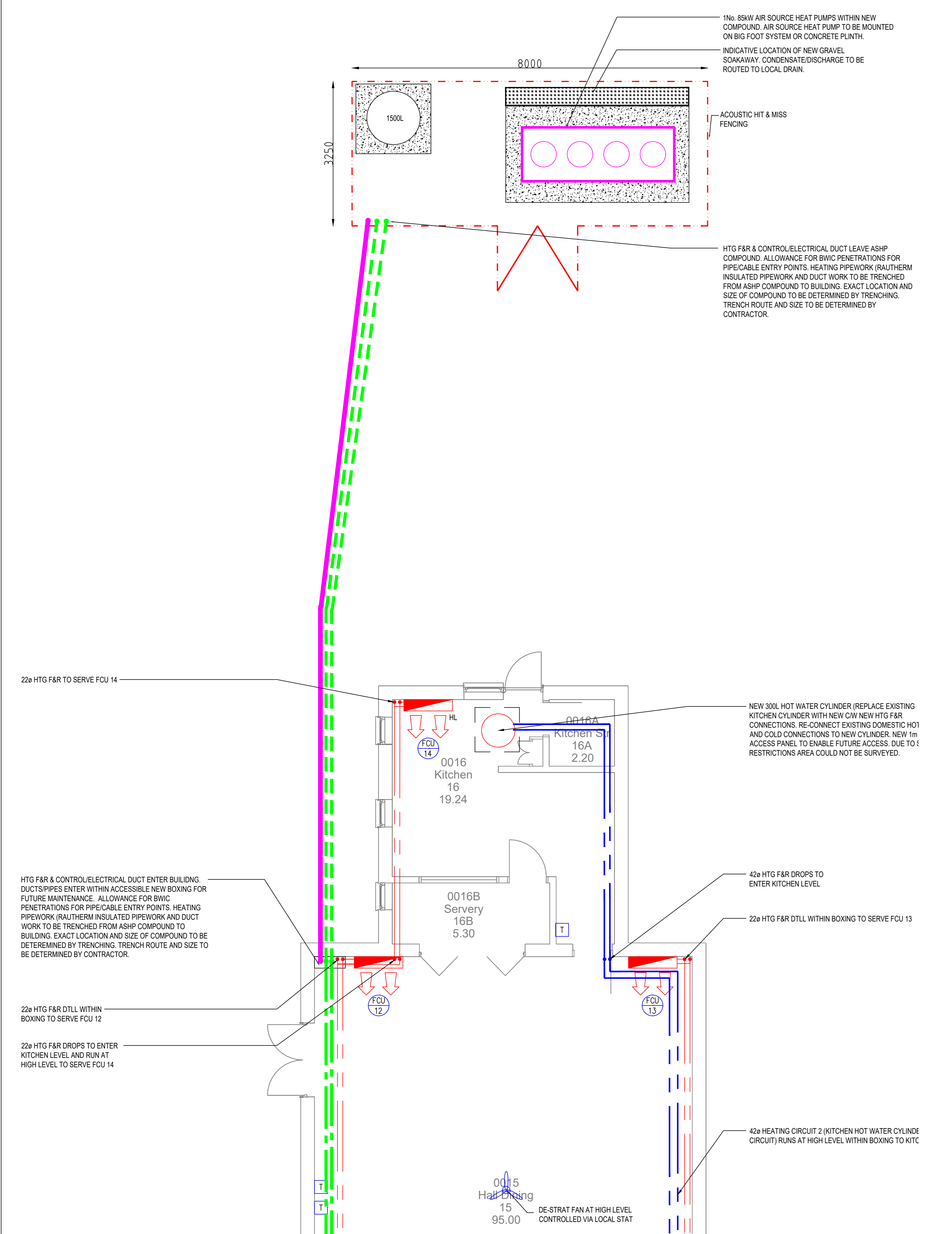


Room Name	Heat Loss (Watts)	Correction Factor	Emitter Ref.	Emitter Style	Type	Height (mm)	Length (mm)	Output (watts)	Corrected Output (54%/69%) (watts)
0020 Classbase 20	3800	0.5465	RAD 01	JAGA GUARDIAN LST	CASE TO FLOOR 169MM DEPTH WITH FAN ASSIST	500	1240	2358	1297.947
			RAD 02	JAGA GUARDIAN LST	CASE TO FLOOR 169MM DEPTH WITH FAN ASSIST	500	1840	4471	2443.4015
BWC Boys Toilets	1700	0.5465	RAD 03	MYSON LOW SURFACE TEMPERATURE	LST SUPER PLUS	972	1400	2240	1224.16
0022 Staffroom 22	1600	0.5465	RAD 04	JAGA GUARDIAN LST	CASE TO FLOOR 169MM DEPTH WITH FAN ASSIST	600	1440	3589	1961.3885
0006A Office 6A	1100	0.5465	RAD 05	MYSON COMPACT SELECT	TYPE 22	600	1200	2051	1120.8715
GWC Girls Toilet	1500	0.5465	RAD 06	MYSON LOW SURFACE TEMPERATURE	LST SUPER PLUS	972	1400	2240	1224.16
SWC Staff Toilet	300	0.5465	RAD 07	MYSON LOW SURFACE TEMPERATURE	LST SUPER PLUS	872	420	494	269.971
0013 Acc WC 13	400	0.5465	RAD 08	MYSON LOW SURFACE TEMPERATURE	LST SUPER PLUS	872	600	659	360.1455
0014 Corridor Entr	1250	0.5465	RAD 09	MYSON LOW SURFACE TEMPERATURE	LST SUPER PLUS	972	1400	2240	1224.16
0009 Office HT 9	700	0.5465	RAD 10	MYSON COMPACT SELECT	TYPE 22	600	700	1196	653.614
0011 Office 11	700	0.5465	RAD 11	MYSON COMPACT SELECT	TYPE 22	600	700	1196	653.614
0019 Corridor 19	5000	0.5465	FCU 01	SPC - BEL 30/40	FLOOR STANDING	600	700	SPEED - Low	3100
0017 Corridor 17	5000	0.5465	FCU 02	SPC - BEL 30/40	FLOOR STANDING	600	700	SPEED - Low	3100
0003 Classbase 3	3450	0.5465	FCU 03	SPC - BEL 30/40	FLOOR STANDING	600	700	SPEED - Medium	3800
0007 Library 7	3700	0.5465	FCU 04	SPC - BEL 30/40	FLOOR STANDING	600	700	SPEED - Medium	3800
0006 Reception 6	1500	0.5465	FCU 05	SPC - BEL 30/40	FLOOR STANDING	600	700	SPEED - Low	3100
0001 Classbase 1	5500	0.5465	FCU 06	SPC - BEL 30/40	FLOOR STANDING	600	700	SPEED - Low	3100
			FCU 07	SPC - BEL 30/40	FLOOR STANDING	600	700	SPEED - Low	3100
			FCU 08	SPC - BEL 30/40	FLOOR STANDING	600	700	SPEED - Low	3100
			FCU 09	SPC - BEL 30/40	FLOOR STANDING	600	700	SPEED - Low	3100
			FCU 10	SPC - BEL 30/40	FLOOR STANDING	600	700	SPEED - Medium	3800
			FCU 11	SPC - BEL 30/40	FLOOR STANDING	600	700	SPEED - Medium	3800
			FCU 12	SPC - BEL 30/40	FLOOR STANDING	600	700	SPEED - Medium	3800
			FCU 13	SPC - BEL 30/40	FLOOR STANDING	600	700	SPEED - Medium	3800
			FCU 14	SPC - BEL 30/40	FLOOR STANDING	600	700 </tr		



NOTES

- THIS DRAWING IS TO BE READ IN CONJUNCTION WITH ALL RELEVANT ARCHITECTURAL & STRUCTURAL DRAWINGS.
- THIS DRAWING IS TO BE READ IN CONJUNCTION WITH ALL RELEVANT BUILDING SERVICES DRAWINGS & SCHEDULES.
- THIS DRAWING IS NOT TO BE SCALED.
- ALL DIMENSIONS ARE IN mm UNLESS OTHERWISE STATED.
- ALL HEATING PIPEWORK SHALL BE HEAVY GRADE STEEL PIPEWORK TO BSEN 10255:2004.
- ALL HEATING PIPEWORK, WITH THE EXCEPTION OF FINAL DROPS TO RADIATORS, SHALL BE INSULATED.
- AUTOMATIC AIR VENTS TO BE FITTED AT ALL HIGH POINTS. DRAIN COCKS TO BE FITTED AT ALL LOW POINTS.
- HEATING PIPEWORK BRANCHES SHALL BE COMPLETE WITH ISOLATION VALVE ON THE FLOW AND DOUBLE REGULATING VALVE OR COMMISSIONING SET ON THE RETURN AS INDICATED.
- ALL RADIATORS, EXCEPT IN CIRCULATION AREAS, TO BE COMPLETE WITH A THERMOSTATIC RADIATOR VALVE ON THE FLOW CONNECTION AND LOCKSHIELD VALVE ON THE RETURN CONNECTION. ALL CONNECTIONS TO BE TB06 UNLESS INDICATED OTHERWISE.

ISOLATION VALVE

COMMISSIONING SET

FAN CONVECTOR CW POWER SUPPLY

LST RADIATOR

CONVENTIONAL RADIATOR

FAN ASSISTED LST RADIATOR C/W POWER SUPPLY

REF	DESCRIPTION	DATE	BY	CLIENT

ST EDMUNDS PRIMARY SCHOOL

HEATING LAYOUT

DRN	CHKD	SCALE	PROJECT NO.	MECHANICAL	ELECTRICAL
ZD	ZD	1:50	A0	XXXX	ZD ZD ZD ZD

PROJECT STAGE: **STAGE 4**

STATUS: **S4 - SUITABLE FOR STAGE APPROVAL**