



The project is to replace the existing timber platform that connects the kitchen dining space, situated on the half level, to the garden, with a new metal platform to maximise light, available planting area and its longevity.



The south-east facing garden is part of Hall Drive crescent housing located on Hall Drive in Sydenham, London



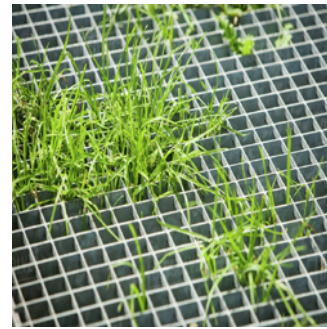
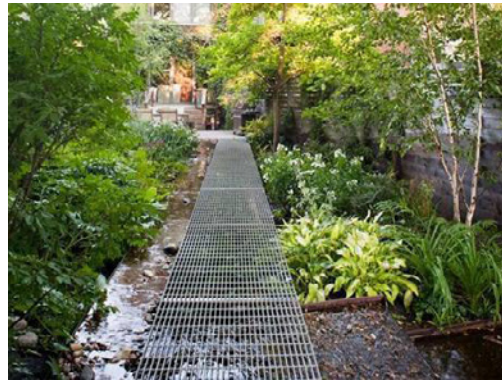
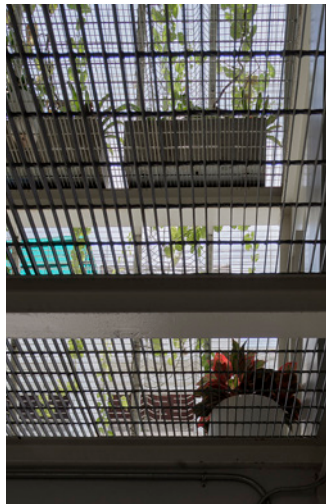
The aim of the project is to create a better connection with the house and the garden and that maximises the potential for planting



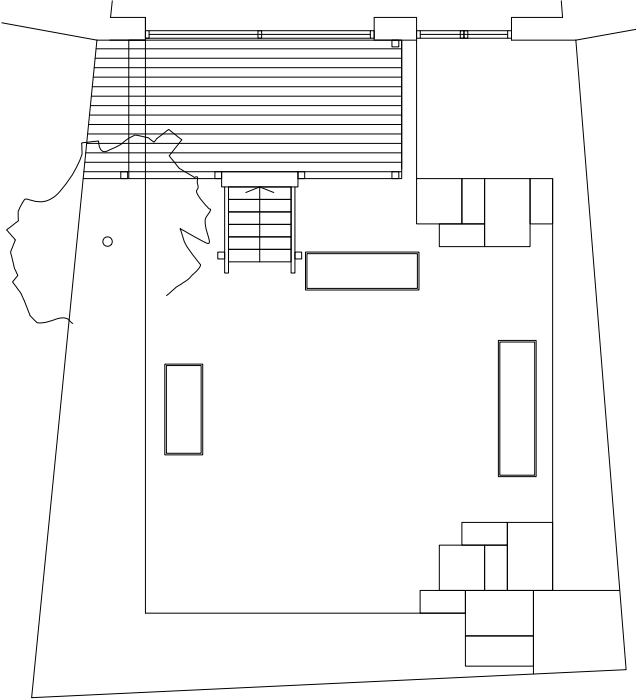
The existing timber deck limits planting underneath and around the platform and has begun to rot away



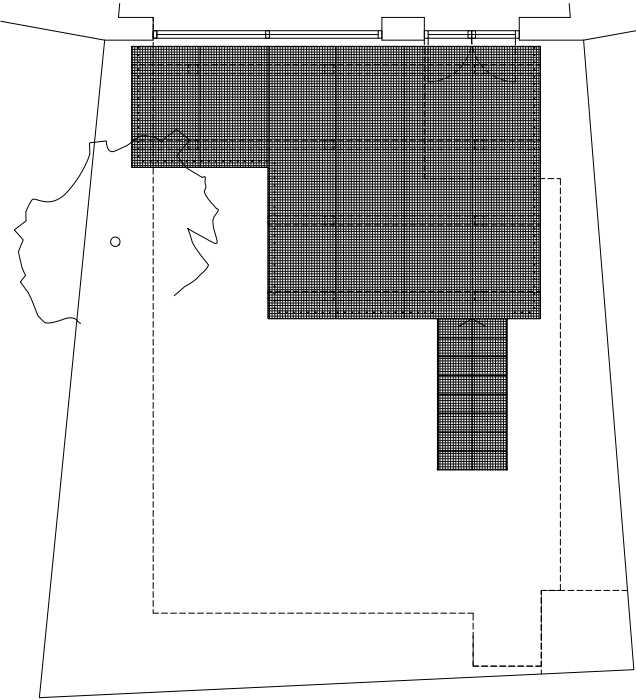
The design intention is to bring the colours and the scents of the garden around and underneath the platform



The following references show the potential for creating more porosity and openness allowing planting to merge with the platform



Existing



Proposed

The new platform has the appearance of floating over the garden with planting around and below





Existing



Proposed

The proposed platform is thinner and lifted up to align with internal floor level allowing light and rain to pass through