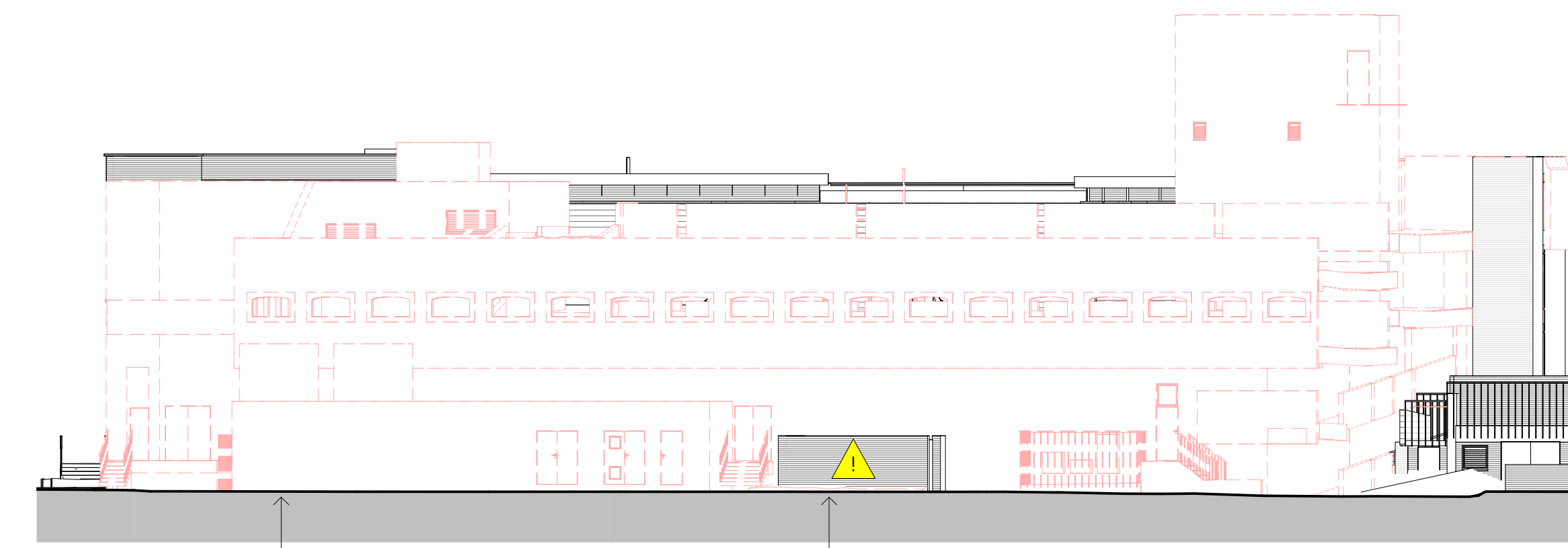


1 1A - Demo
1:200

Substation A
Existing substation to be protected during works and retained in working order

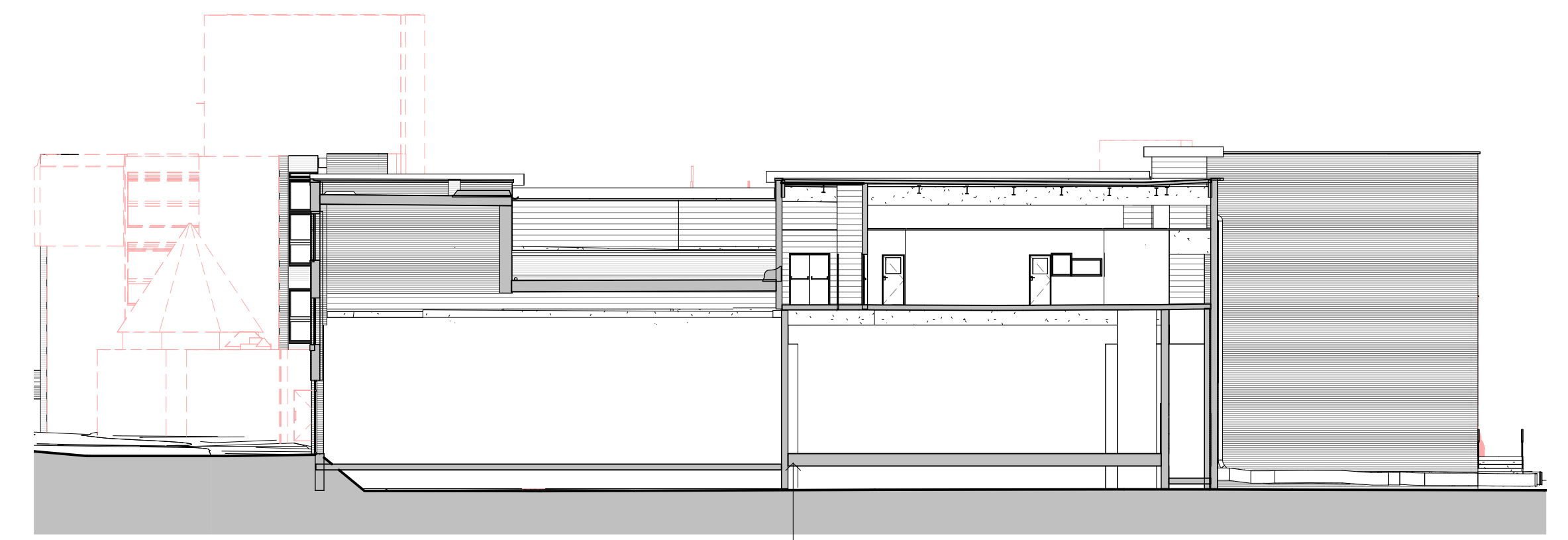
Existing toilet block has not been surveyed - contractor to undertake survey to inform the demolition works in this area



2 1B - Demo
1:200

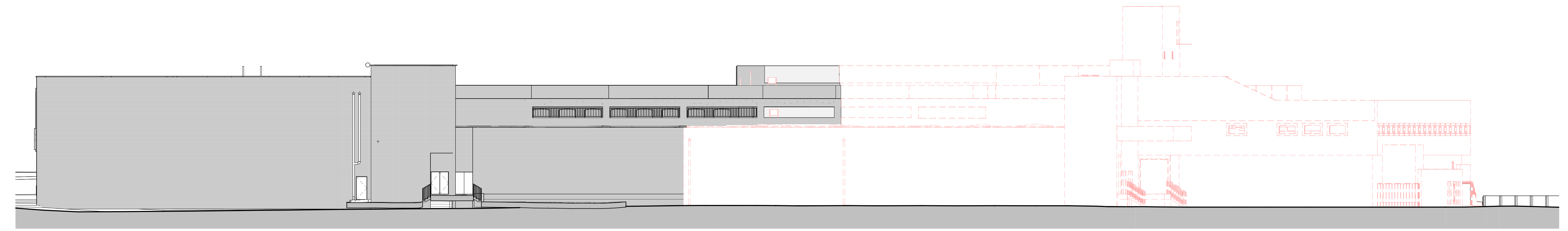
Pressurised Sprinkler Tanks - Contractor to allow for emptying and decommissioning prior to demolition

Substation B
To be protected during works and retained in working order



4 1D - Demo
1:200

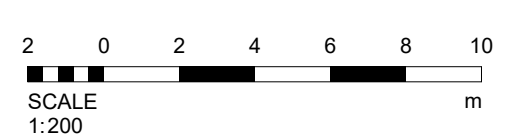
Retained Concrete structure to be made good and rebar to be protected as SE design



3 1C - Demo
1:200

This drawing is produced as a document for use in this project only and may not be used for any other purpose. The license is granted only to the specific recipients of the drawing directly from Chaplin Farrant Ltd. Chaplin Farrant Ltd accepts no liability for the use of this drawing other than the purpose for which it was intended in connection with this project as recorded on the title block and 'File Status Code' and 'Revision'. If also issued in digital format, the data within this file may not be used for any purpose other than the information present on the paper copy of the document.

NOTES



Chaplin Farrant Copyright © 2018. This drawing may not be reproduced in any form without Chaplin Farrant's prior written agreement.

Note:
All demolition materials will be removed from site and stored at a local site with potential to reuse/recycle materials for the new construction works.

REVISION LOG

REV	DATE	DESCRIPTION
P1	22/11/23	Planning Issue
P2	08/12/23	Demolition Tender Package

DRAWING USE

TENDER

CLIENT
East Suffolk Council

PROJECT
Battery Green

ADDRESS
Battery Green, Lowestoft

STATUS

S4-FOR STAGE APPROVAL

DRAWING TITLE
Car Park Demolition Elevations

DRAWING NO.
BGMC-CF-A-XX-DR-A-0702

CREATED BY
JG

CHECKED BY
SD

APPROVED BY
MC

SIZE
A1

REVISION
P2

CF JOB NO.
6832

53 Yarmouth Road
Norwich
NR7 0ET
01603 700000
office@chaplinfarrant.com

Also at:
Cambridge and Winchester
www.chaplinfarrant.com

