

NOTE

TANKING TO UPPER SURFACE BY SIKA WITH WARRANTY IN FAVOUR OF NATIONAL TRUST ROOF DRAINAGE, LAND DRAINAGE AND SUMP TO DRAINAGE ENGINEERS DESIGN

NOTE

OPENINGS A, B, C & D UPSTAND AND COVER TO CLIENTS SPECIFICATION DETAILS IN ACCORDANCE WITH SIKA INSTRUCTIONS

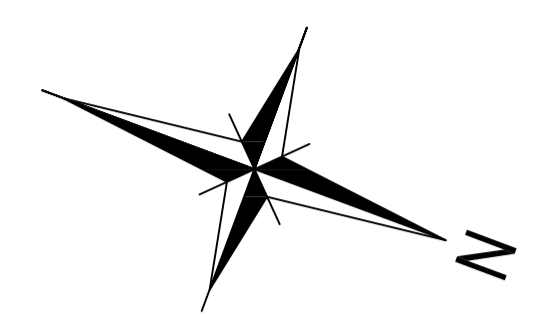
INTUMESCENT PAINT

INTUMESCENT PAINT TO BE JOTUN STEELMASTER 120 SB ON PENGUARD PRIMER ON GALVANIZING ALL TO MANUFACTURERS INSTRUCTIONS

STRUCTURAL MEMBERS

REF	TYPE	SIZE
EB1	STEEL BEAM	EXISTING
EB2	STEEL BEAM	EXISTING
B1	STEEL BEAM	230 x 90 x 32 PFC *
B2	STEEL BEAM	230 x 90 x 32 PFC *
B3	STEEL BEAM	230 x 90 x 32 PFC *
B4	STEEL BEAM	230 x 90 x 32 PFC *
B5	STEEL BEAM	200 x 90 x 30 PFC #
B6	STEEL BEAM	200 x 90 x 30 PFC #
B7	STEEL BEAM	200 x 90 x 30 PFC #
B8	STEEL BEAM	200 x 90 x 30 PFC *
B9	STEEL BEAM	200 x 90 x 30 PFC *
B10	STEEL BEAM	200 x 90 x 30 PFC #
B11	STEEL BEAM	100 x 100 x 6.3 HF S355 RHS *#2
S	SPlice TO DETAIL	

* HOT DIP GALVANIZED TO NOTE S12, DRG A9514 / 1 AND INTUMESCENT PAINTED TO GIVE 120 MIN FIRE PROTECTION TO NOTE S13, DRG A9514 / 1
200W x 10 THICK MS PLATE 4 FW ALL ROUND TO TOP OF BEAM
#2 AS # BUT 600 x 10 PLATE FOR WIDTH OF OPENING



STRUCTURE KEY

- = WALL MATERIAL UNSPECIFIED
- = WALLS UNDER
- = DEMOLISHED
- EXISTING**
- = EXISTING STONEMWORK
- = EXISTING STEEL BEAM
- PROPOSED**
- = PROPOSED STEEL BEAM

ACA JOB No 1617

PRELIMINARY

P4	4.12.23	JB	Amendments as 'P4'
P3	16.11.23	JB	Amendments as 'P3'
P2	11.8.23	JB	Amendments as 'P2'
P1	16.3.23	JB	Preliminary issue
Rev	Date	Drawn	Amendment

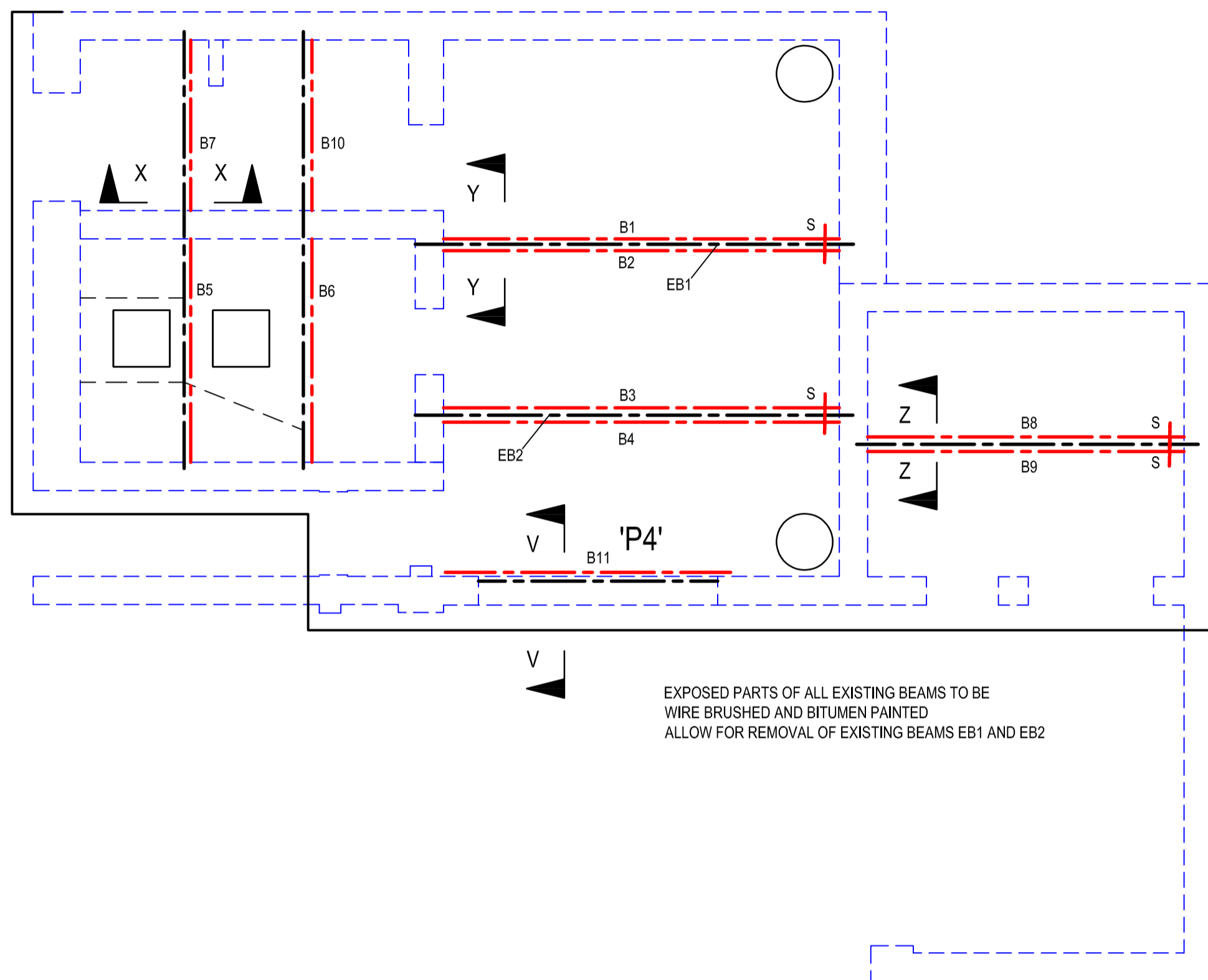


Suffolk House 154 High Street
Sevensoaks Kent TN13 1XE UK
UK: +44 (0)1732 740195
www.ctp-llp.com

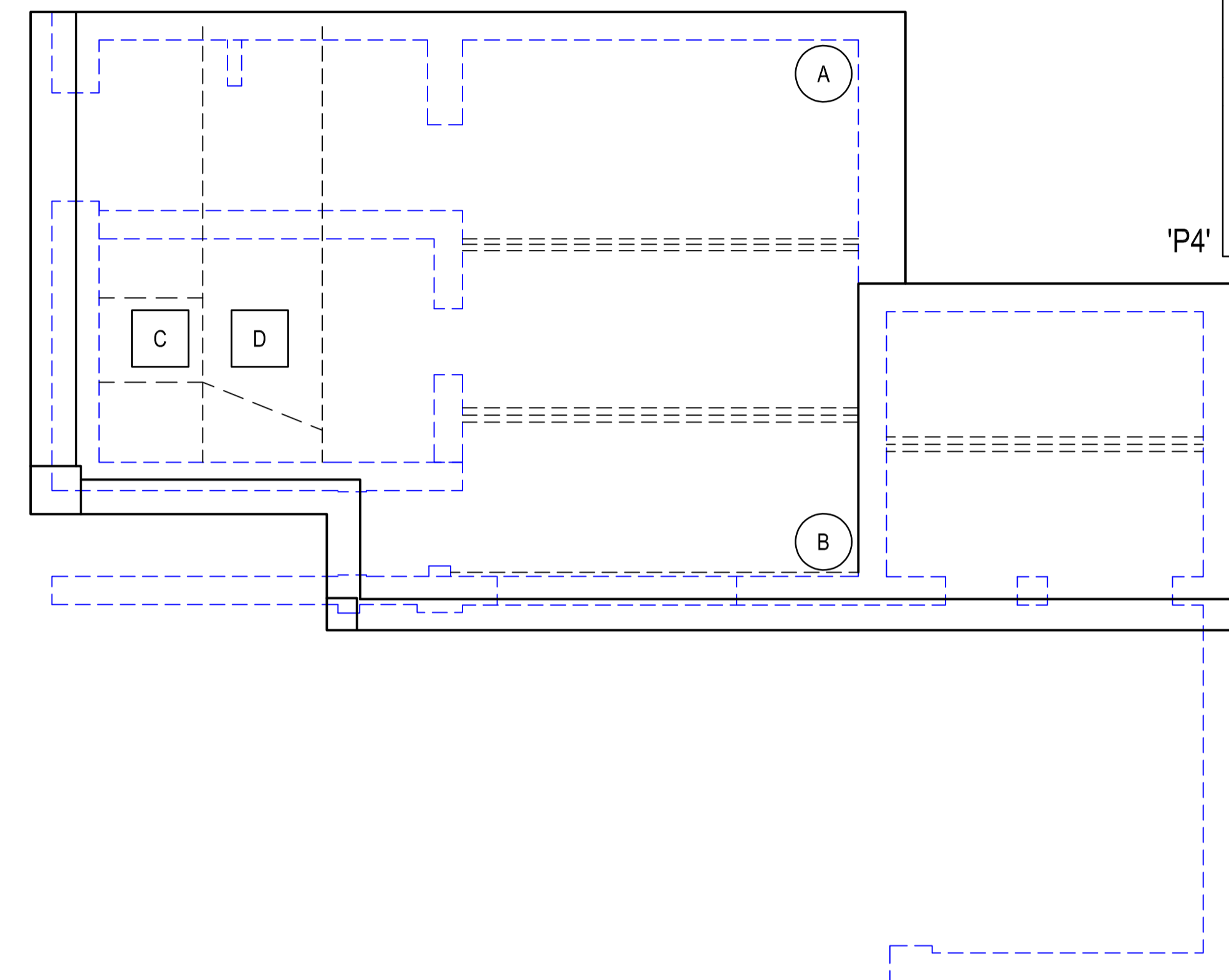
Job
Swimming Pool Pumping Station
Chartwell
Westerham
TN16 6PS

Description
Proposed Remedial Work
Sheet 2

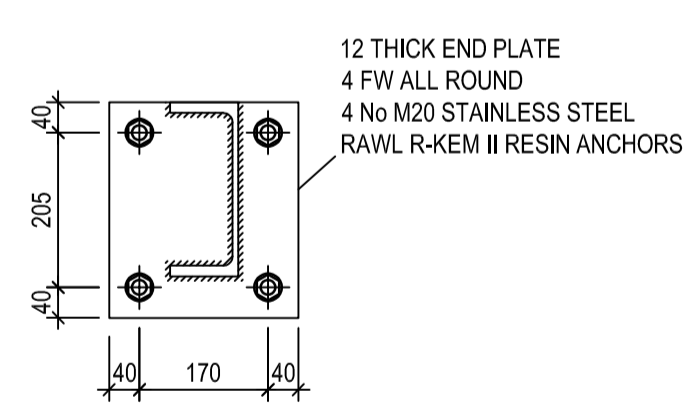
Scale	1:50 1:10 at A1		
Drawn	JB	Checked	AC
Date	Mar 2023	Drg No	A9514 / 5 P4



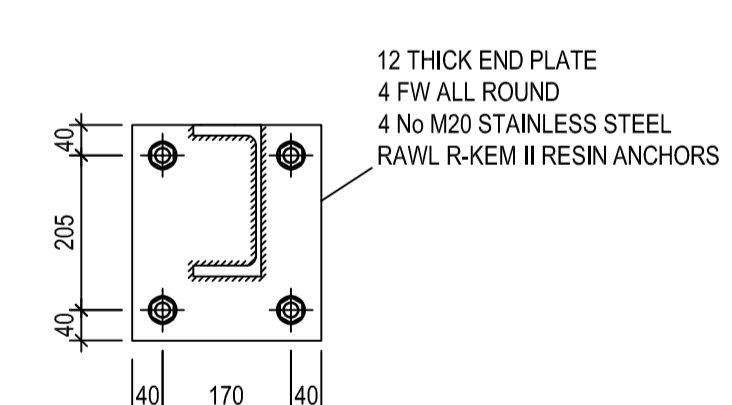
PUMPING STATION ROOF SOFFIT PLAN
SEE ALSO ROOF PLAN
SCALE 1:50



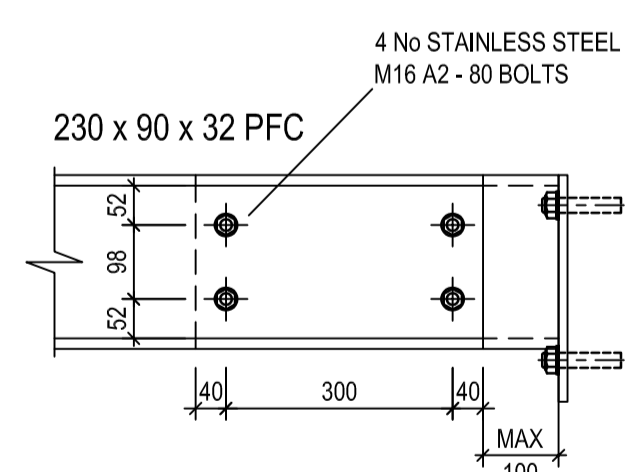
PUMPING STATION ROOF PLAN
SCALE 1:50



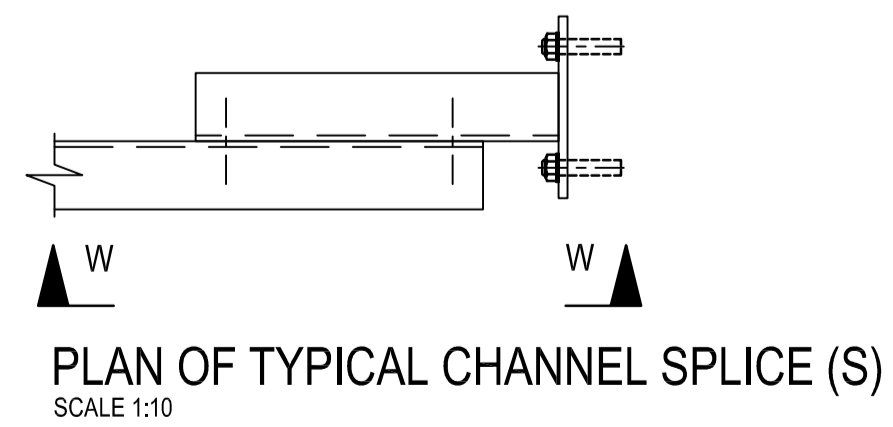
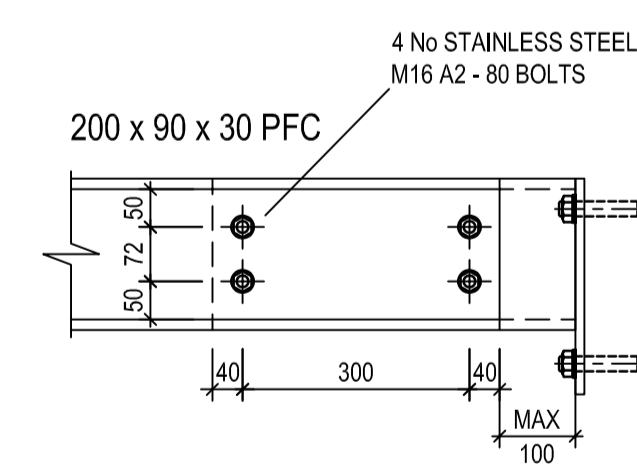
END PLATE FOR 230 x 90 x 32 PFC



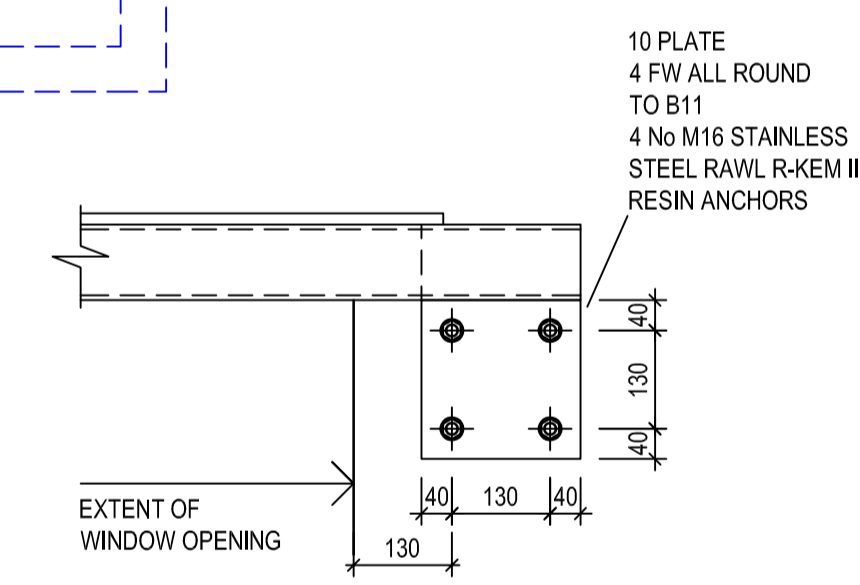
END PLATE FOR 200 x 90 x 30 PFC



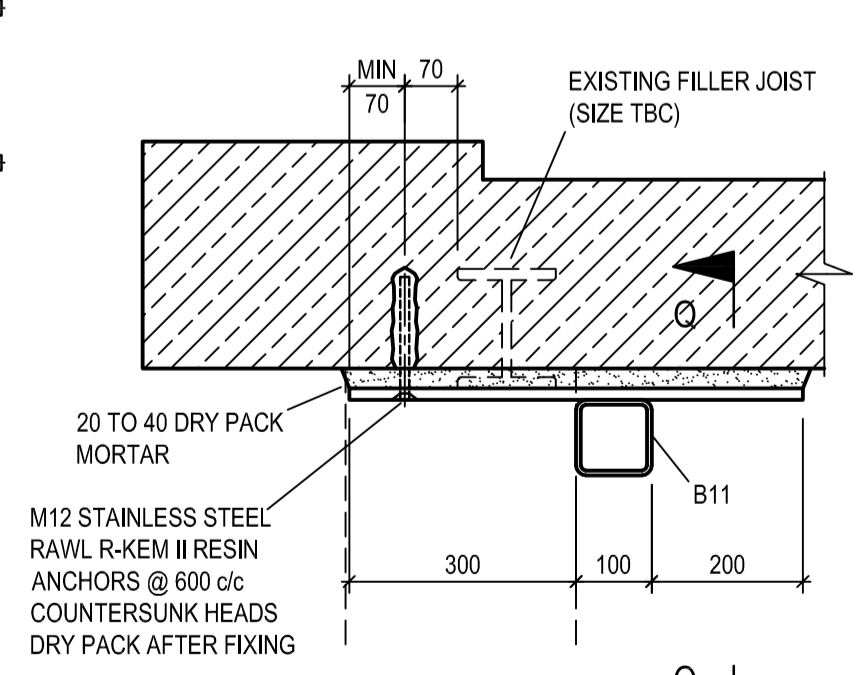
SECTION W - W
SCALE 1:10



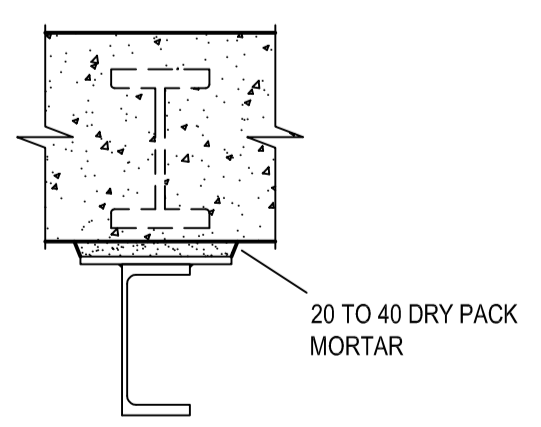
PLAN OF TYPICAL CHANNEL SPLICE (S)
SCALE 1:10



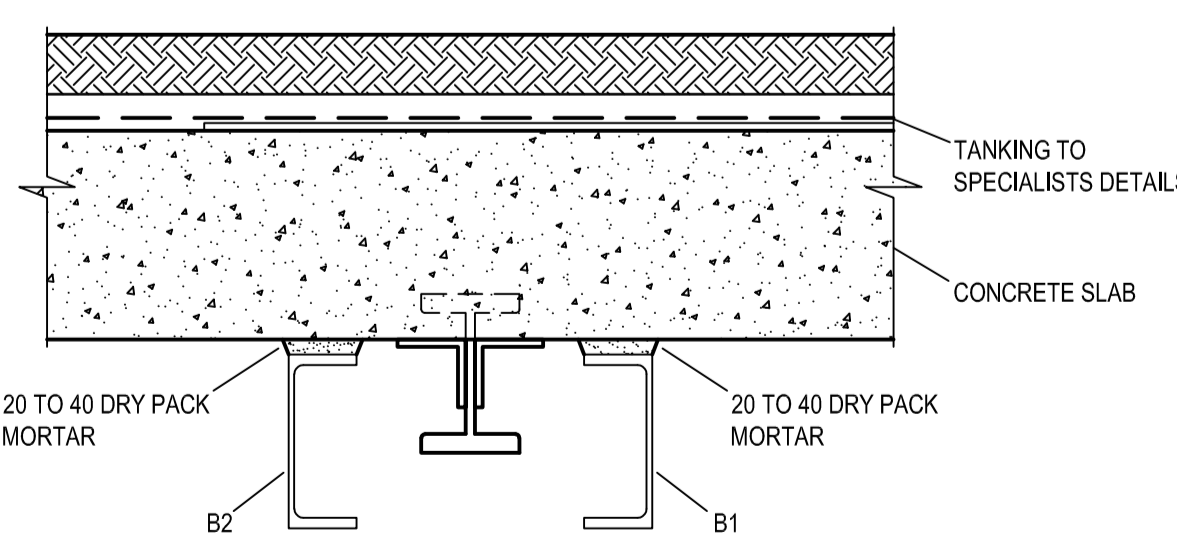
'P4' SECTION Q - Q
SCALE 1:10



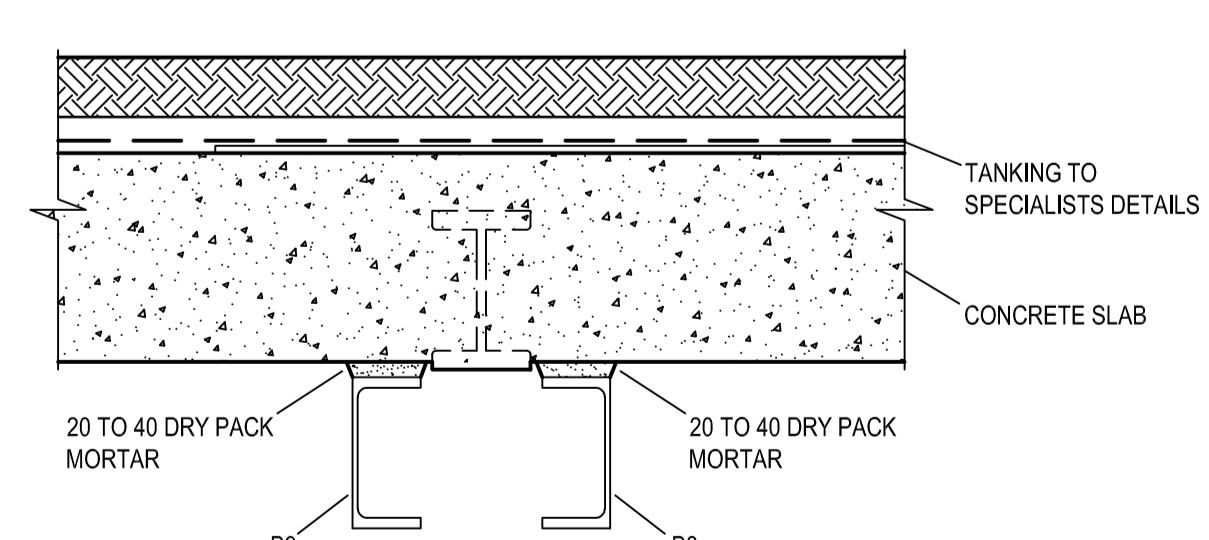
'P4' SECTION V - V
SCALE 1:10



SECTION X - X
SCALE 1:10



SECTION Y - Y
SCALE 1:10



SECTION Z - Z
SCALE 1:10

