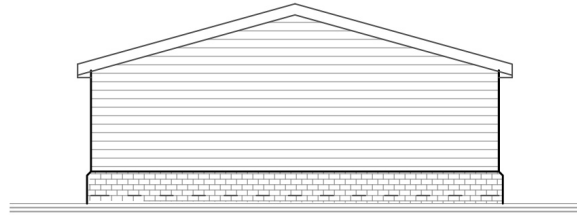
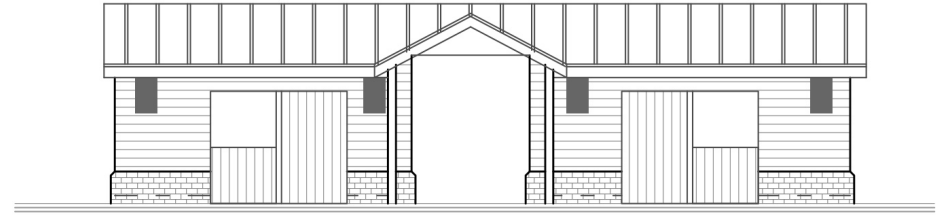


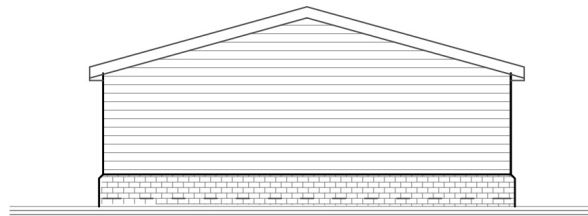
External lighting plan and specification



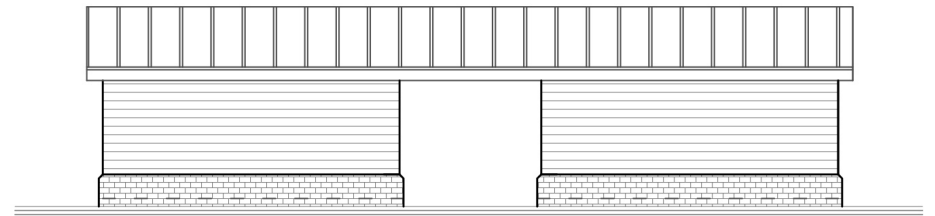
SIDE ELEVATIONS



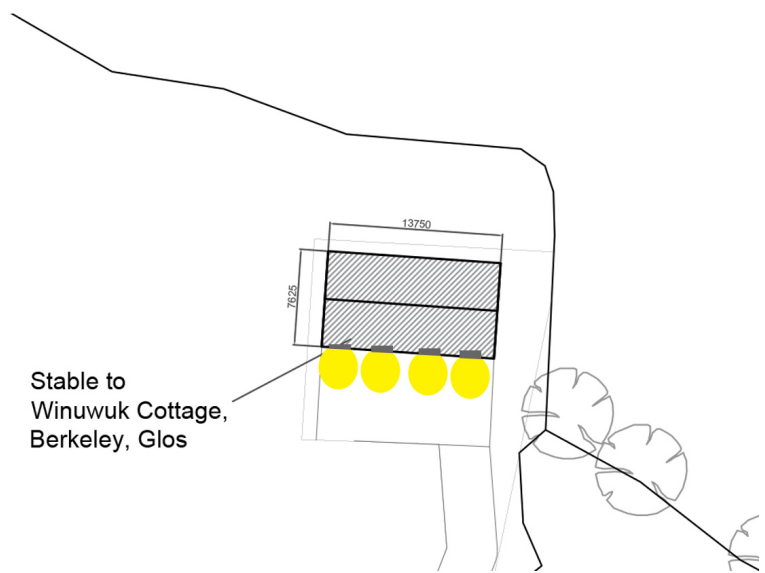
FRONT ELEVATIONS



SIDE ELEVATIONS



REAR ELEVATIONS



Key

- External lights to be individually activated by PIR sensors on a 10 minute cut off.
 - Lights to be metal spots at 2.5 m high using Aurora AU-DP208 warm white (2700 K)
 - 8W LED lamps, 550 lumens, 35 degree beam angle to light doorways and outside area.
- No direct light spill onto boundary features; reflected light expected to be negligible with no UV component