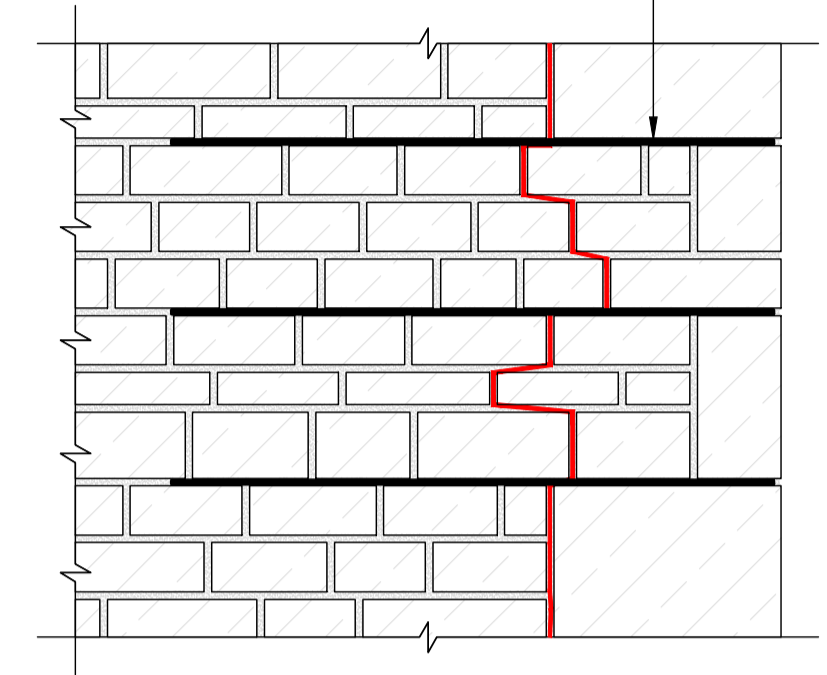




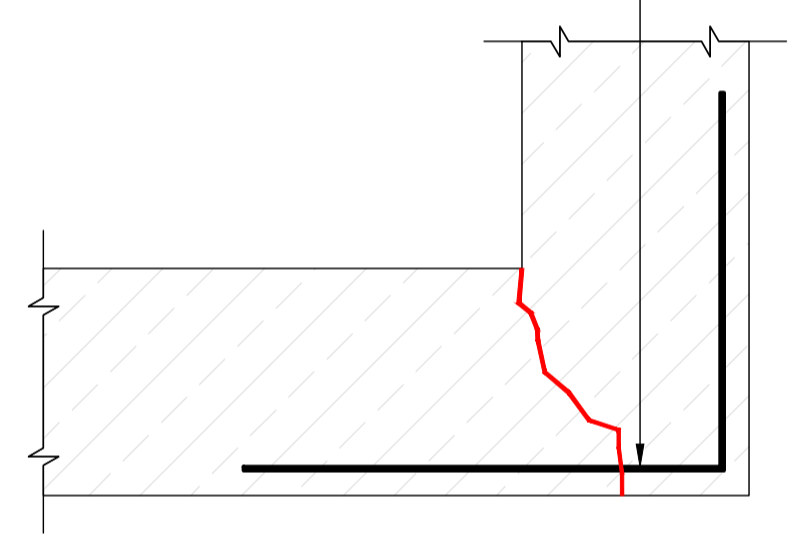
**FRONT ELEVATION**  
Scale 1:50

Lengths of HeliBar extending 500mm either side of the crack set into resibond mortar into the specified cut slots. Where cracks are less than 500mm from an external corner or an opening, at least 100mm should be bent round the corner and bonded into the return wall or bent and fixed into the reveal, avoiding any DPC membrane.



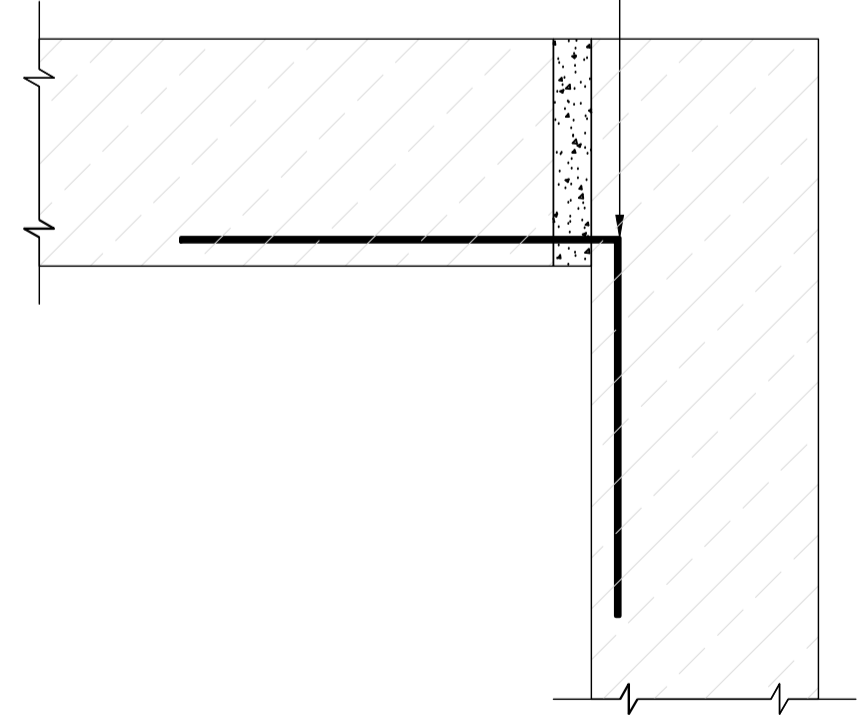
**CORNER CRACK STITCHING HELIBAR DETAIL**  
Scale 1:10

Lengths of HeliBar extending 500mm either side of the crack set into resibond mortar into the specified cut slots. Where cracks are less than 500mm from an external corner, at least 100mm should be bent round the corner and fixed into the reveal avoiding any DPC membrane.



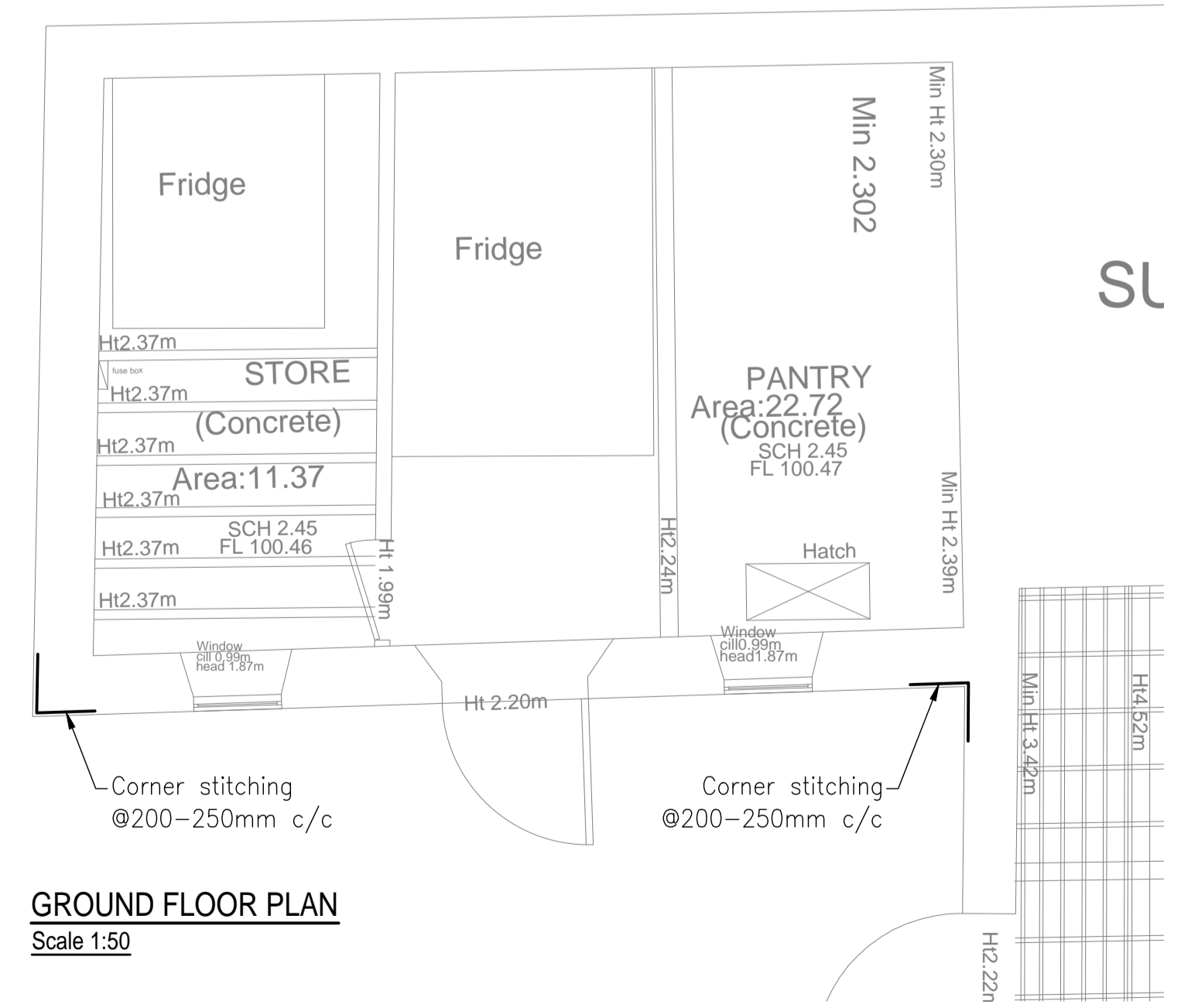
**EXTERNAL CORNER CRACK STITCHING HELIBAR DETAIL - PLAN**  
Scale 1:10

Lengths of HeliBar extending 500mm either side of the crack set into resibond mortar into the specified cut slots. Where cracks are less than 500mm from an internal corner, at least 100mm should be bent round the corner and bonded into the return wall, avoiding any DPC membrane.

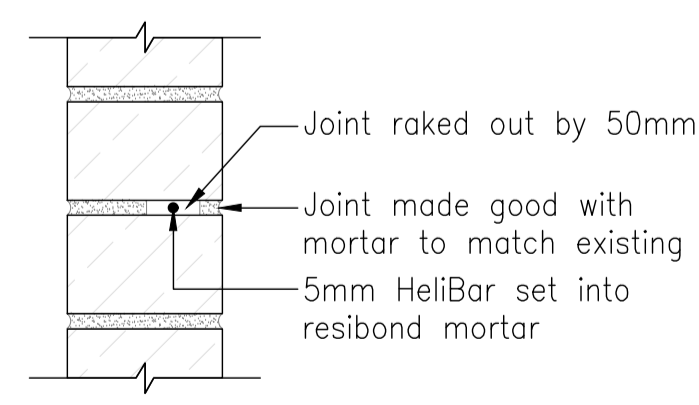


**INTERNAL CORNER CRACK STITCHING HELIBAR DETAIL - PLAN**  
Scale 1:10

**NOTE:-**  
Drainage to be fully repaired or replaced as outlined in the CCTV survey report prior to the stitching works being carried out.



**GROUND FLOOR PLAN**  
Scale 1:50



**TYPICAL HELIBAR DETAIL**  
Scale 1:5

Ref	Revision	Date	By
P3	External corner stitching added to plan view	21.12.23	SH
P2	Notation amended.	19.12.23	SH
P1	First issue	14.12.23	SH

**NOT FOR CONSTRUCTION**

**PRELIMINARY**

**DWS**  
Consulting Engineers

**Diamond Wood & Shaw Limited**  
The Old School • Blaby Road • Enderby • Leicestershire • LE19 4AR  
Tel: 0116 254 8989 • Email: mail@dws.co.uk

Project Title  
**GREENDALE OAK  
CUCKNEY**

Drawn SH	Engineer AK	Checked AK
Scale at 1:50, 1:10, 1:5 @ A1	Date DEC 2023	
Drawing Title <b>PLAN, ELEVATION AND CRACK STITCHING DETAILS</b>		
Project No. 23-20714	Drawing No. 1-001	Revision P3
BIM Code		