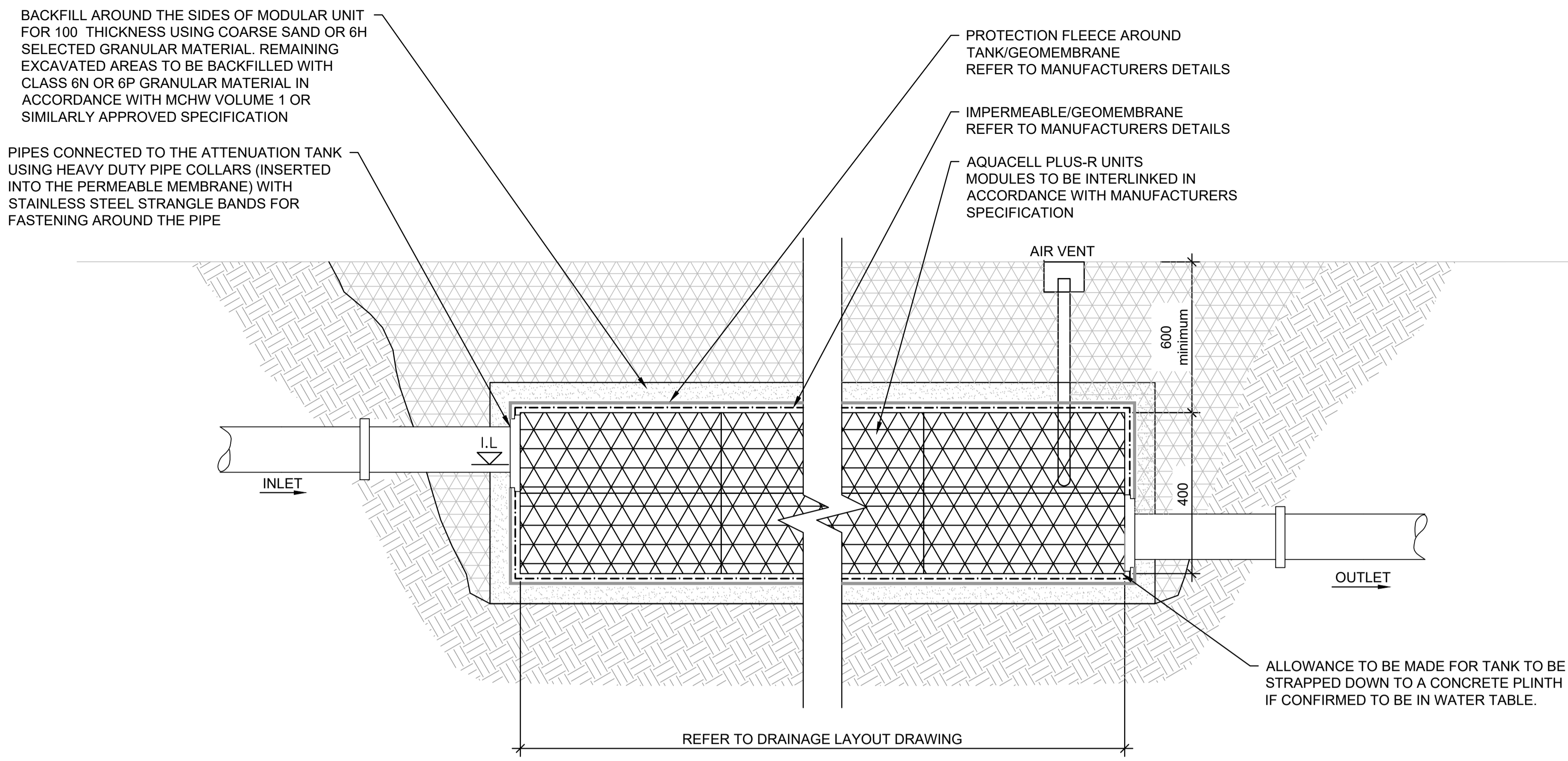
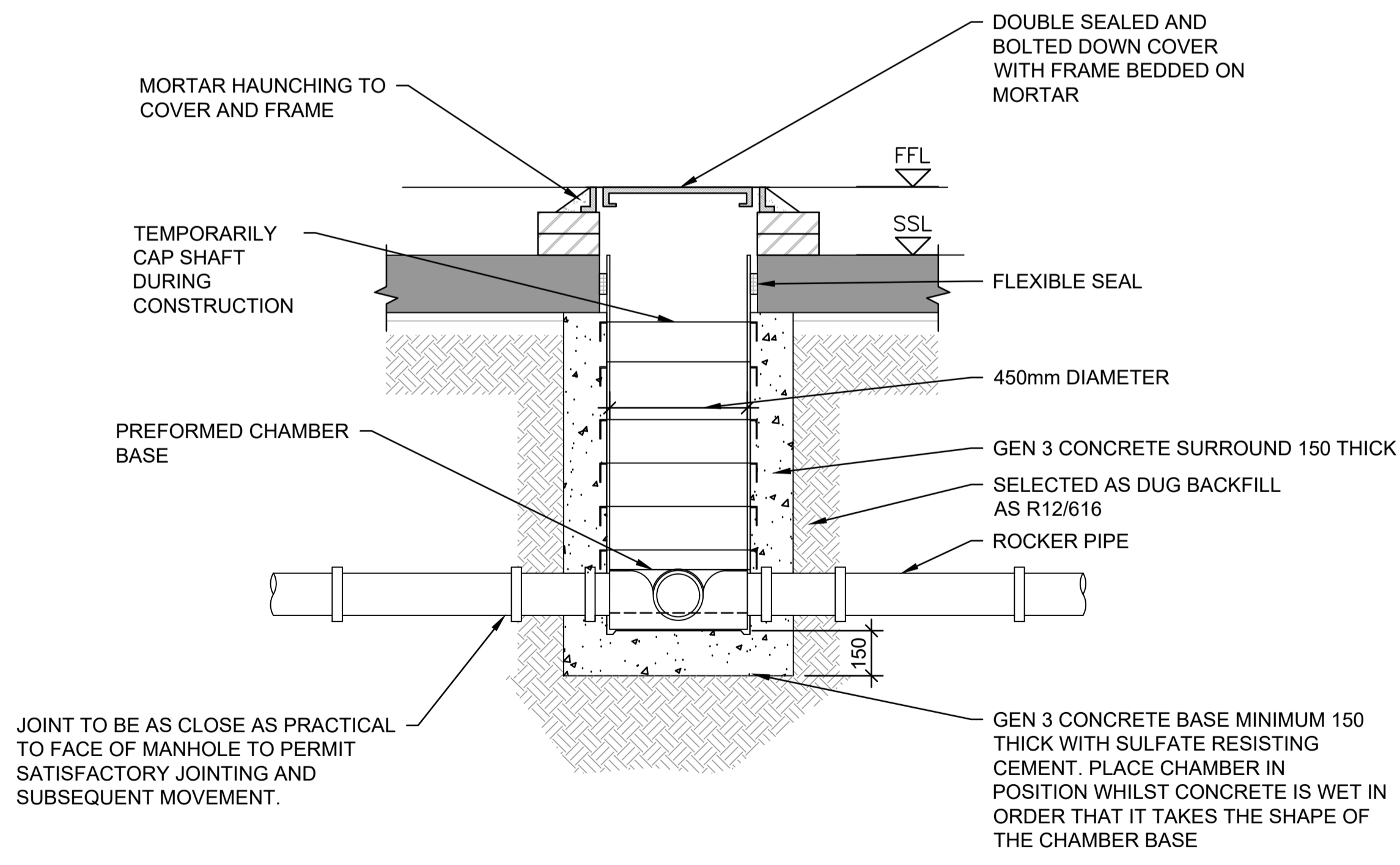


NOTES

1. THIS DRAWING TO BE READ IN CONJUNCTION WITH THE SPECIFICATION AND ALL RELEVANT ARCHITECT, ENGINEERS, SERVICES AND SPECIALIST DRAWINGS.
2. SELECTED AS-DUG MATERIAL SHALL CONSIST OF UNIFORM READILY COMPACTIBLE MATERIAL FREE FROM VEGETABLE MATTER, BUILDING RUBBISH & FROZEN MATERIAL OR MATERIALS SUSCEPTIBLE TO SPONTANEOUS COMBUSTION. IT SHALL EXCLUDE CLAY OF LIQUID LIMIT >80 AND/OR PLASTIC LIMIT >55 AND MATERIALS OF EXCESSIVELY HIGH MOISTURE CONTENT. CLAY LUMPS AND STONES RETAINED ON 75mm AND 37.5mm SIEVES RESPECTIVELY SHALL BE EXCLUDED.
3. PIPE BEDDING & SIDEFILL MATERIALS SHALL BE PLACED IN 150mm THICK LAYERS AROUND PIPES & HAND-TAMPED UNTIL THE REQUIRED THICKNESSES ARE ACHIEVED. BACKFILLING SHALL THEN CONTINUE IN 225mm THICK LAYERS. MECHANICAL COMPACTION PLANT SHALL NOT BE USED WITHIN 450mm OF PIPE CROWN.
4. COMPRESSIBLE FILLER SHALL BE PROVIDED AT EACH PIPE JOINT, PRE-SHAPED TO PIPE DIA AND EXTENDING TO FULL THICKNESS OF CONCRETE. FILLER SHALL BE 18mm THICK BITUMEN IMPREGNATED INSULATING BOARD OR EXPANDED POLYSTYRENE.



MODULAR ATTENUATION TANK DETAILS



INTERNAL PLASTIC CHAMBER

P2	PLANNING ISSUE	AR	22/11/2023	CJ
P1	PRELIMINARY ISSUE	AR	27/10/2023	CJ
Rev	Description	By	Date	Chkd

PEREGA
 perega.co.uk 528 High Road, Leytonstone, London E11 3EE 020 8988 5820
 Client
OXLEAS NHS FOUNDATION TRUST

Project
**QUEEN MARY HOSPITAL CDC
 SIDCUP**

Title
**DRAINAGE DETAILS
 SHEET 2**

Perega Project No.	Checked	Passed	Size	Scale		
C13772	CJ		A1	NTS		
Project Code	Originator	Zone	Level	Type	Role	Drawing No.
C13772	PER	ZZ	XX	DR	C	03002
Suitability Code	Status	Revision				
S2	PRELIMINARY	P2				