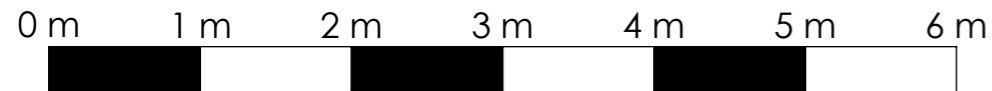
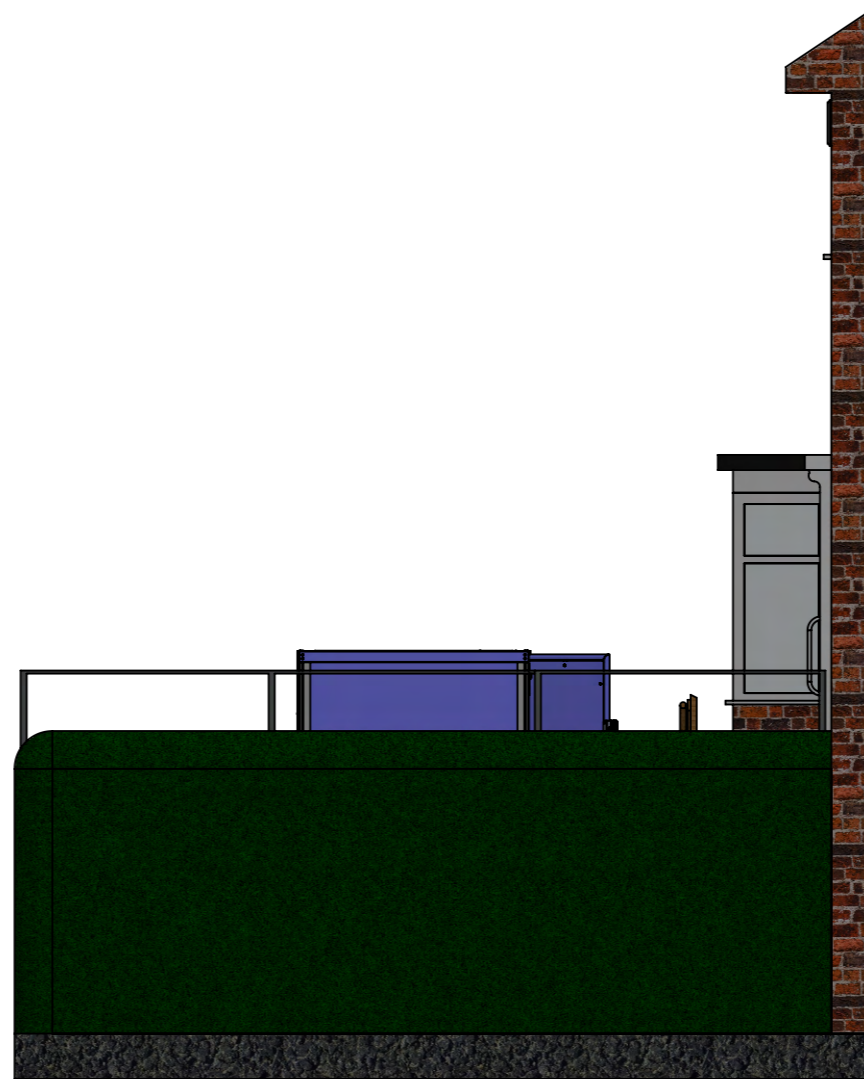




Third Angle Projection

Proposed Side Elevation



Lift Shown At Upper Level

Original SK01 Ref:	
Similar Item Ref:	
FILE LOCATION:	C:\PDM_Standard_Your\GIS\Engineering Drawings\Planning Permissions\CO 319295 - 94 Ruskin Street\



**Wessex Lift Company Limited,**  
 Budds Lane, Romsey, Hampshire,  
 SO51 0HA

THIS DRAWING IS THE PROPERTY OF WESSEX LIFT COMPANY LIMITED, AND MAY NOT BE PUBLISHED REPRODUCED OR USED FOR MANUFACTURE WITHOUT THE EXPRESS PERMISSION OF THE OWNERS IN WRITING

(PDM Issue 1 @ 29/11/2012)

All dimensions are in mm unless otherwise stated.  
 TOLERANCES unless otherwise stated:  
 Decimal Places:  
 X = ±1  
 X.X = ±0.25  
 X.XX = ±0.13  
 ANGULAR: ±0.5°  
 Thread ISO Coarse Class 6  
 Hole sizes = H11

DRAWN BY:	AP	DATE:	10/01/2024
MATERIAL:	Refer to details		
FINISH:	See Sales Spec.		
WEIGHT:	95167998.31		
SCALE:	1:50	Sheet Size	A3

TITLE:  
**PROPOSED PLANNING PERMISSION OF AN EXTERNAL STEPLIFT (LL800) AT 94 RUSKIN STREET, B71 1LW**

ALTERATION	ECO	INITIALS	DATE	REV
Initial Release		AP	10/01/2024	A

DWG NO:  
**PP-319295**  
 Status: SHEET 8 of 12