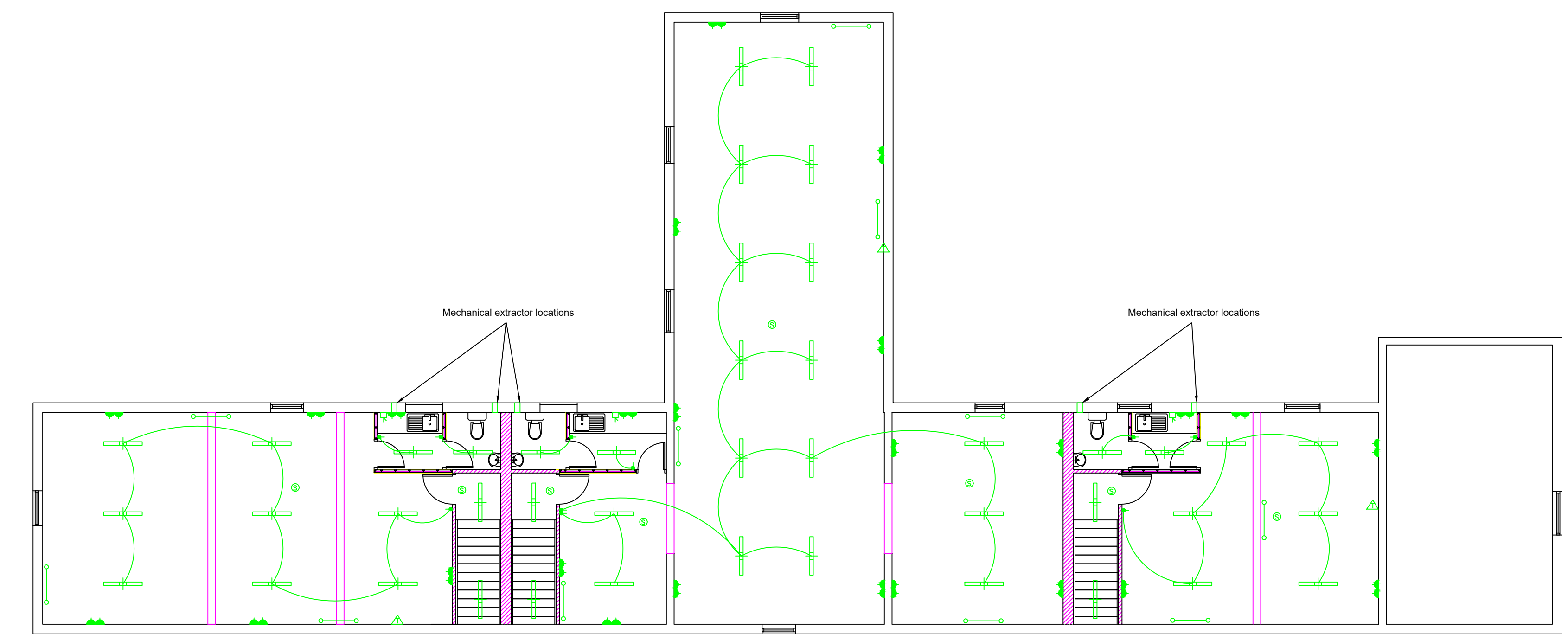
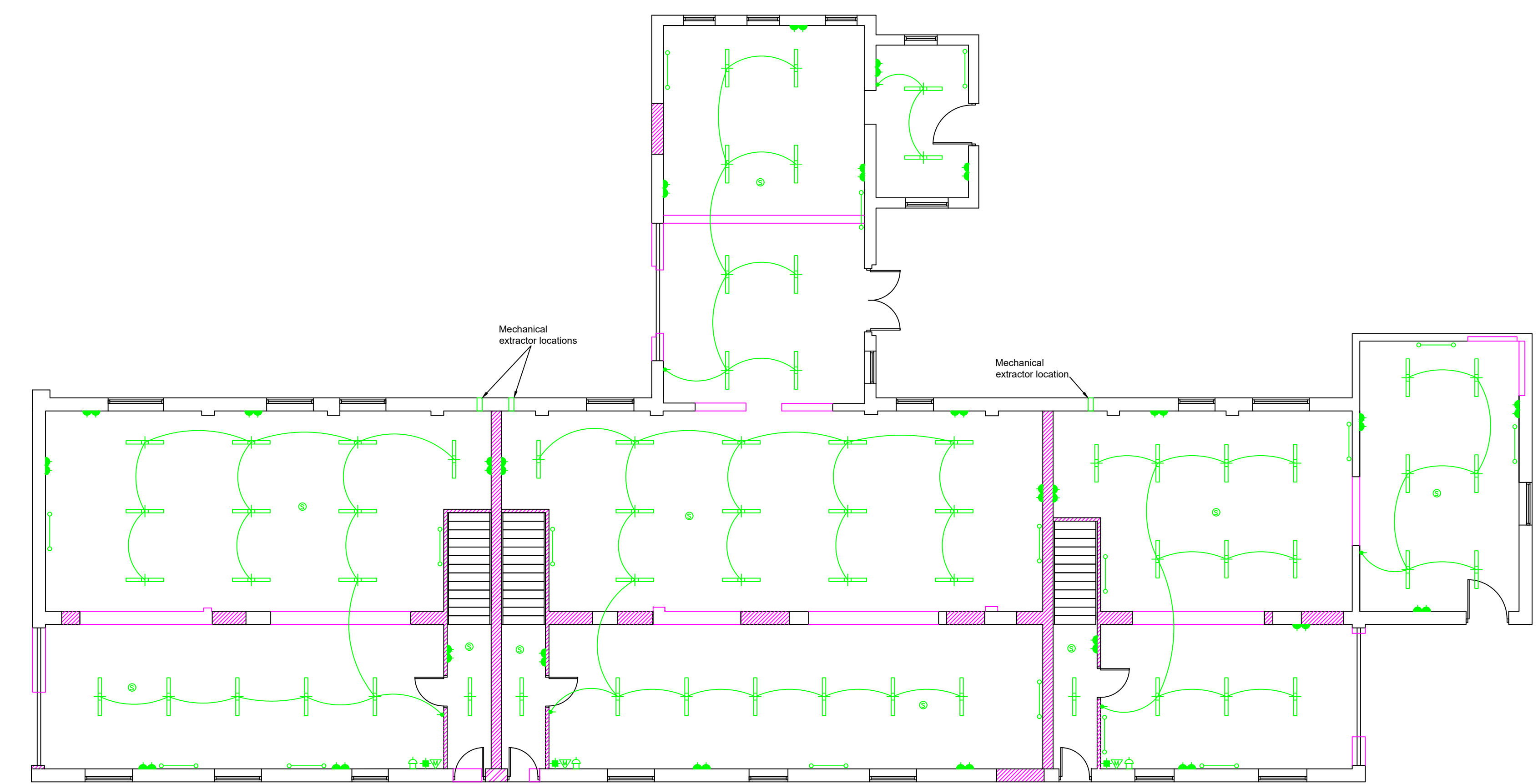




Electrical site plan 1:200



First Floor



Ground Floor

Electrical floor plans 1:100

- Key
- New lighting circuit
  - ⊕ 5 amp socket connected to light switch
  - ⬇ Pendant drop
  - ⊕ Double switched socket outlet (E1=1000mm above FL) (E2=1500mm above FL) (E3=2000mm above FL)
  - ⬆ 1 gang light switch
  - ⬆ 2 gang light switch
  - ⬆ Full chord switch
  - ⬆ Switched spur
  - ⬆ Halogen downlighter Low voltage
  - ⬆ Wall mounted External light with anti-glare cover
  - ⬆ Floor mounted flush fitting external uplighter
  - ⬆ Radiator position
  - ⬆ Phone socket
  - ⬆ Strip fluorescent light
  - ⬆ Fuse board
  - ⬆ Meter positions
  - ⬆ Television aerial outlet
  - ⬆ Smoke detector
- NOTE  
Fused spurs to kitchen to be provided with conduit mounted into plaster taken to rear of appliance bay for direct fitting of appliance cable into spur. Position of cooker connections etc to kitchen to be agreed with kitchen designers.

Rev	Date	Amendments
A	04.01.24	amendments



Fisher German LLP, 4 Vicars Lane  
 Chester, Cheshire, CH1 1JQ  
 Fax: 01244 315954 Tel: 01244 409660

Client:	DMFH FOUNDATION
Project:	BROOK HOUSE FARM BOSTOCK
Title:	Electrical layout plan

Scale:	1:200/100 @ A0
Date:	FEBRUARY 2021
Drawn:	AB
Checked:	-

Dwg No: 128684 - 05  
 THIS DRAWING IS PROTECTED BY COPYRIGHT. IT MAY NOT BE REPRODUCED IN ANY FORM OR BY ANY MEANS OR BY ANY INFORMATION STORAGE AND RETRIEVAL SYSTEMS WITHOUT THE WRITTEN PERMISSION OF FISHER GERMAN LLP. FISHER GERMAN LLP IS A LIMITED LIABILITY PARTNERSHIP. REGISTERED IN ENGLAND AND WALES. REGISTERED NUMBER 0637954. REPRODUCED USING PROCESSED BLENDED DATA. DESIGN COPYRIGHT. ALL RIGHTS RESERVED. LICENSE NUMBER: 1000207