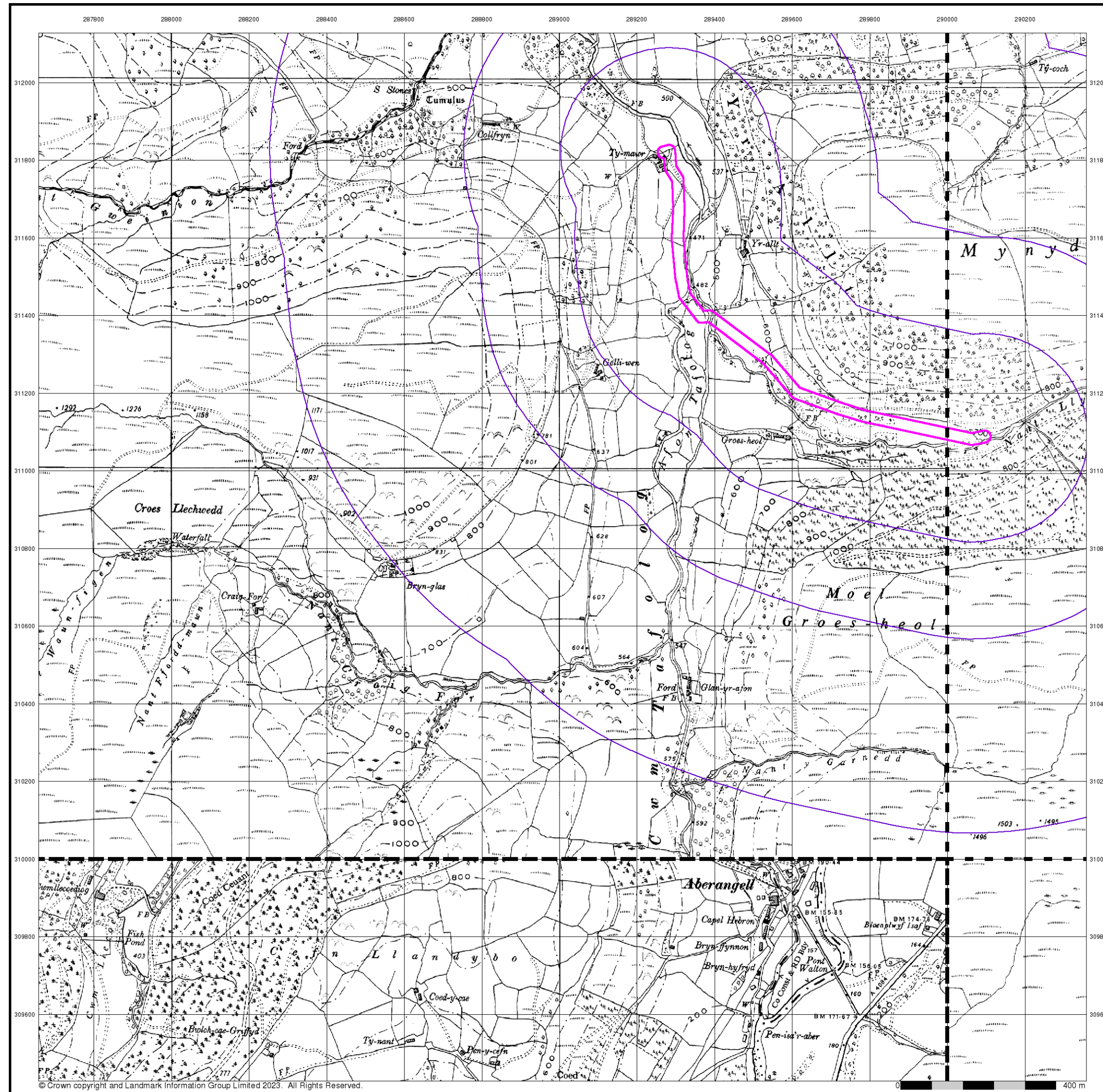


Appendix C – Landmark Envirocheck - Historical Maps



Ordnance Survey Plan

Published 1963

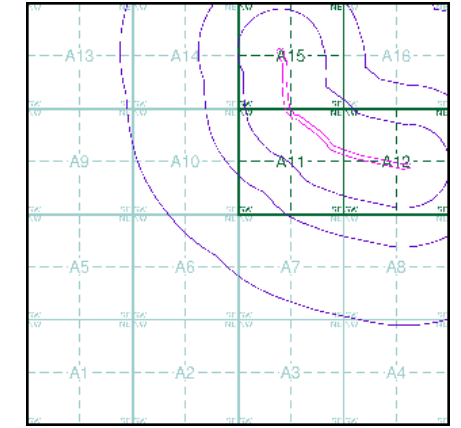
Source map scale - 1:10,000

The historical maps shown were reproduced from maps predominantly held at the scale adopted for England, Wales and Scotland in the 1840's. In 1854 the 1:2,500 scale was adopted for mapping urban areas; these maps were used to update the 1:10,560 maps. The published date given therefore is often some years later than the surveyed date. Before 1938, all OS maps were based on the Cassini Projection, with independent surveys of a single county or group of counties, giving rise to significant inaccuracies in outlying areas. In the late 1940's, a Provisional Edition was produced, which updated the 1:10,560 mapping from a number of sources. The maps appear unfinished - with all military camps and other strategic sites removed. These maps were initially overprinted with the National Grid. In 1970, the first 1:10,000 maps were produced using the Transverse Mercator Projection. The revision process continued until recently, with new editions appearing every 10 years or so for urban areas.

Map Name(s) and Date(s)

SH81SE	SH91SW
1963	1963
1:10,560	1:10,560
SH80NE	SH90NW
1963	1963
1:10,560	1:10,560

Historical Map - Slice A

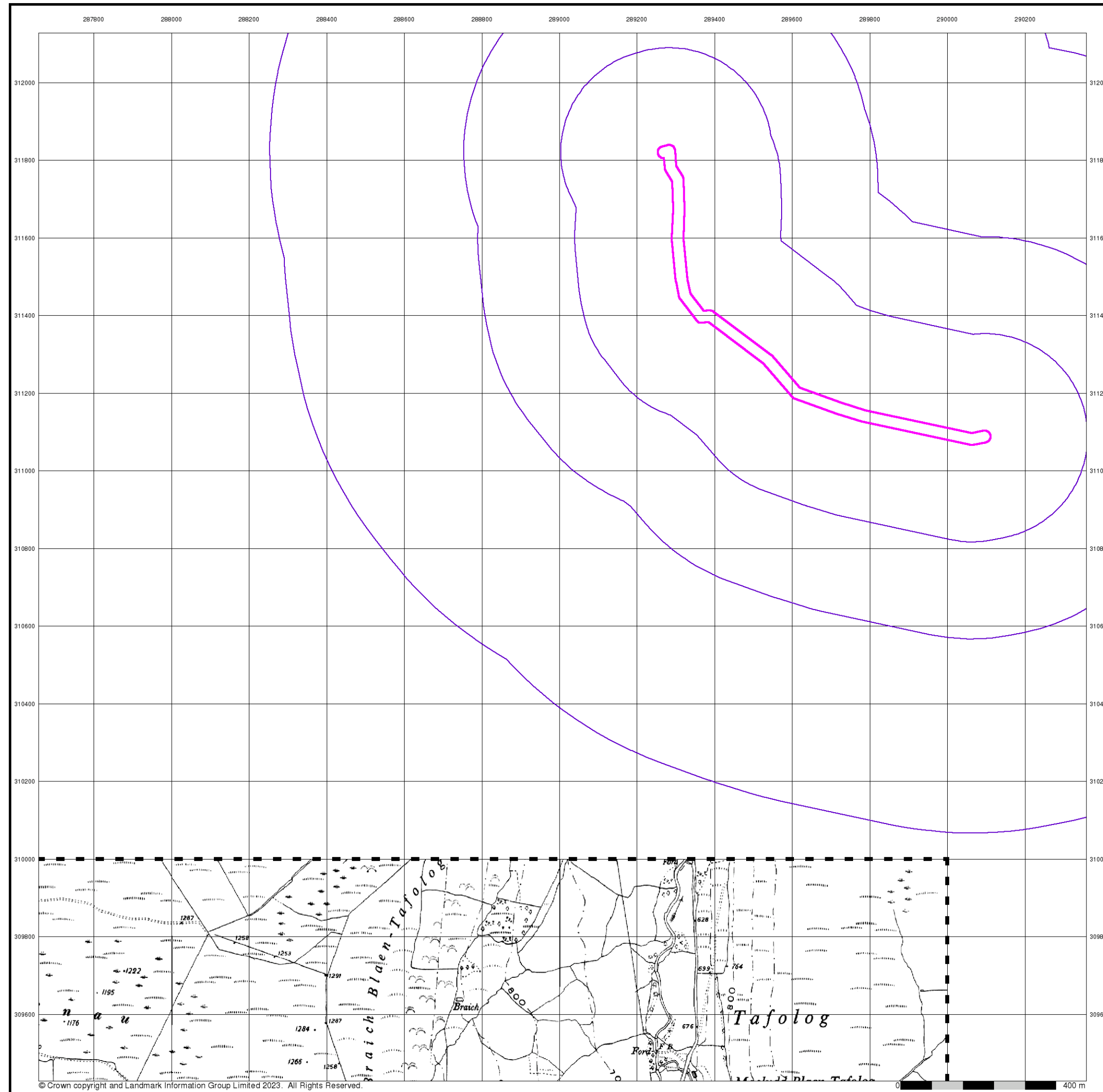


Order Details

Order Number: 307190281_1_1
 Customer Ref: E34076 JGP
 National Grid Reference: 289420, 311210
 Slice: A
 Site Area (Ha): 3.93
 Search Buffer (m): 1000

Site Details

Ty Mawr, Mallwyd, MACHYNLLETH, SY20 9HS



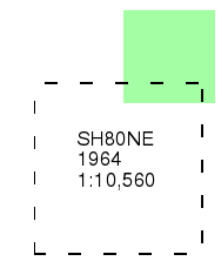
Ordnance Survey Plan

Published 1964

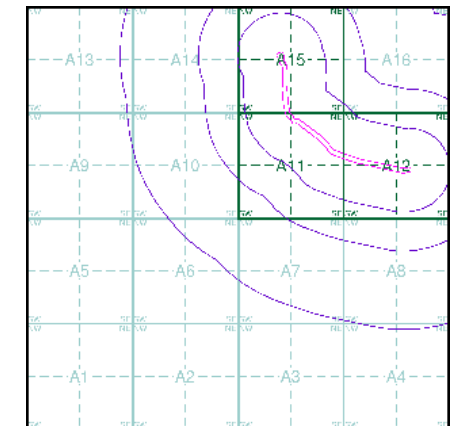
Source map scale - 1:10,000

The historical maps shown were reproduced from maps predominantly held at the scale adopted for England, Wales and Scotland in the 1840's. In 1854 the 1:2,500 scale was adopted for mapping urban areas; these maps were used to update the 1:10,560 maps. The published date given therefore is often some years later than the surveyed date. Before 1938, all OS maps were based on the Cassini Projection, with independent surveys of a single county or group of counties, giving rise to significant inaccuracies in outlying areas. In the late 1940's, a Provisional Edition was produced, which updated the 1:10,560 mapping from a number of sources. The maps appear unfinished - with all military camps and other strategic sites removed. These maps were initially overprinted with the National Grid. In 1970, the first 1:10,000 maps were produced using the Transverse Mercator Projection. The revision process continued until recently, with new editions appearing every 10 years or so for urban areas.

Map Name(s) and Date(s)



Historical Map - Slice A

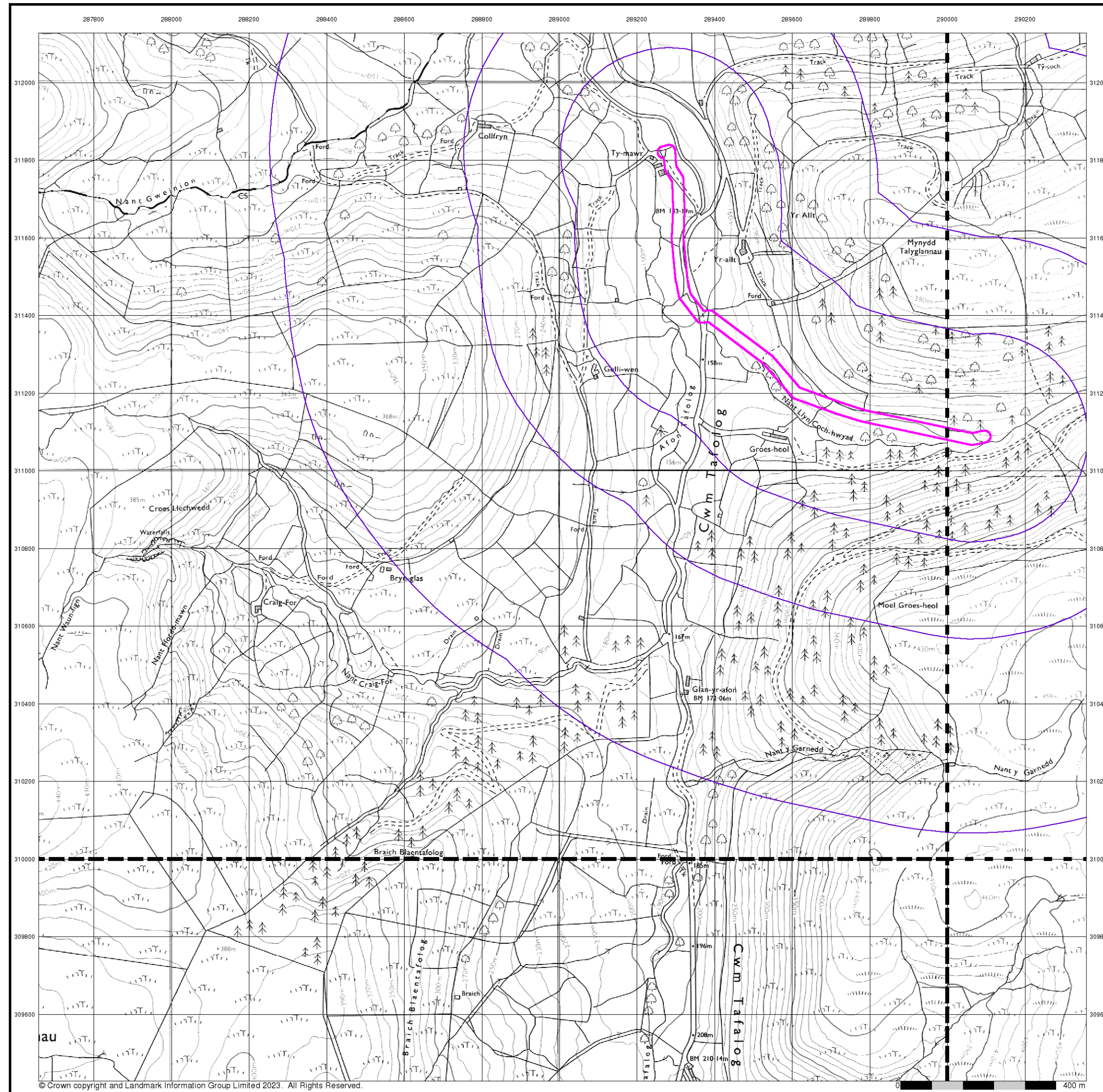


Order Details

Order Number: 307190281_1_1
 Customer Ref: E34076 JGP
 National Grid Reference: 289420, 311210
 Slice: A
 Site Area (Ha): 3.93
 Search Buffer (m): 1000

Site Details

Ty Mawr, Mallwyd, MACHYNLLETH, SY20 9HS



Ordnance Survey Plan

Published 1982 - 1983

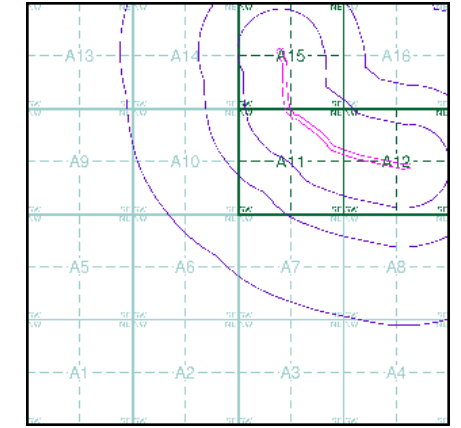
Source map scale - 1:10,000

The historical maps shown were reproduced from maps predominantly held at the scale adopted for England, Wales and Scotland in the 1840's. In 1854 the 1:2,500 scale was adopted for mapping urban areas; these maps were used to update the 1:10,560 maps. The published date given therefore is often some years later than the surveyed date. Before 1938, all OS maps were based on the Cassini Projection, with independent surveys of a single county or group of counties, giving rise to significant inaccuracies in outlying areas. In the late 1940's, a Provisional Edition was produced, which updated the 1:10,560 mapping from a number of sources. The maps appear unfinished - with all military camps and other strategic sites removed. These maps were initially overprinted with the National Grid. In 1970, the first 1:10,000 maps were produced using the Transverse Mercator Projection. The revision process continued until recently, with new editions appearing every 10 years or so for urban areas.

Map Name(s) and Date(s)

SH81SE	SH91SW
1983	1982
1:10,000	1:10,000
SH80NE	SH90NW
1983	1982
1:10,000	1:10,000

Historical Map - Slice A



Order Details

Order Number: 307190281_1_1
 Customer Ref: E34076 JGP
 National Grid Reference: 289420, 311210
 Slice: A
 Site Area (Ha): 3.93
 Search Buffer (m): 1000

Site Details

Ty Mawr, Mallwyd, MACHYNLLETH, SY20 9HS

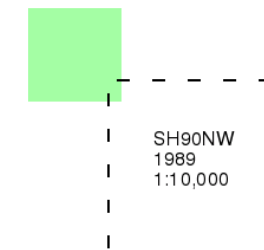
Ordnance Survey Plan

Published 1989

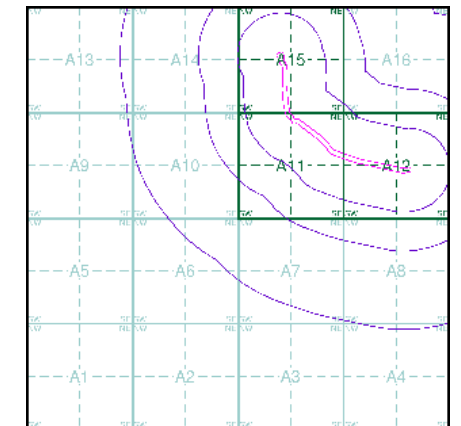
Source map scale - 1:10,000

The historical maps shown were reproduced from maps predominantly held at the scale adopted for England, Wales and Scotland in the 1840's. In 1854 the 1:2,500 scale was adopted for mapping urban areas; these maps were used to update the 1:10,560 maps. The published date given therefore is often some years later than the surveyed date. Before 1938, all OS maps were based on the Cassini Projection, with independent surveys of a single county or group of counties, giving rise to significant inaccuracies in outlying areas. In the late 1940's, a Provisional Edition was produced, which updated the 1:10,560 mapping from a number of sources. The maps appear unfinished - with all military camps and other strategic sites removed. These maps were initially overprinted with the National Grid. In 1970, the first 1:10,000 maps were produced using the Transverse Mercator Projection. The revision process continued until recently, with new editions appearing every 10 years or so for urban areas.

Map Name(s) and Date(s)



Historical Map - Slice A

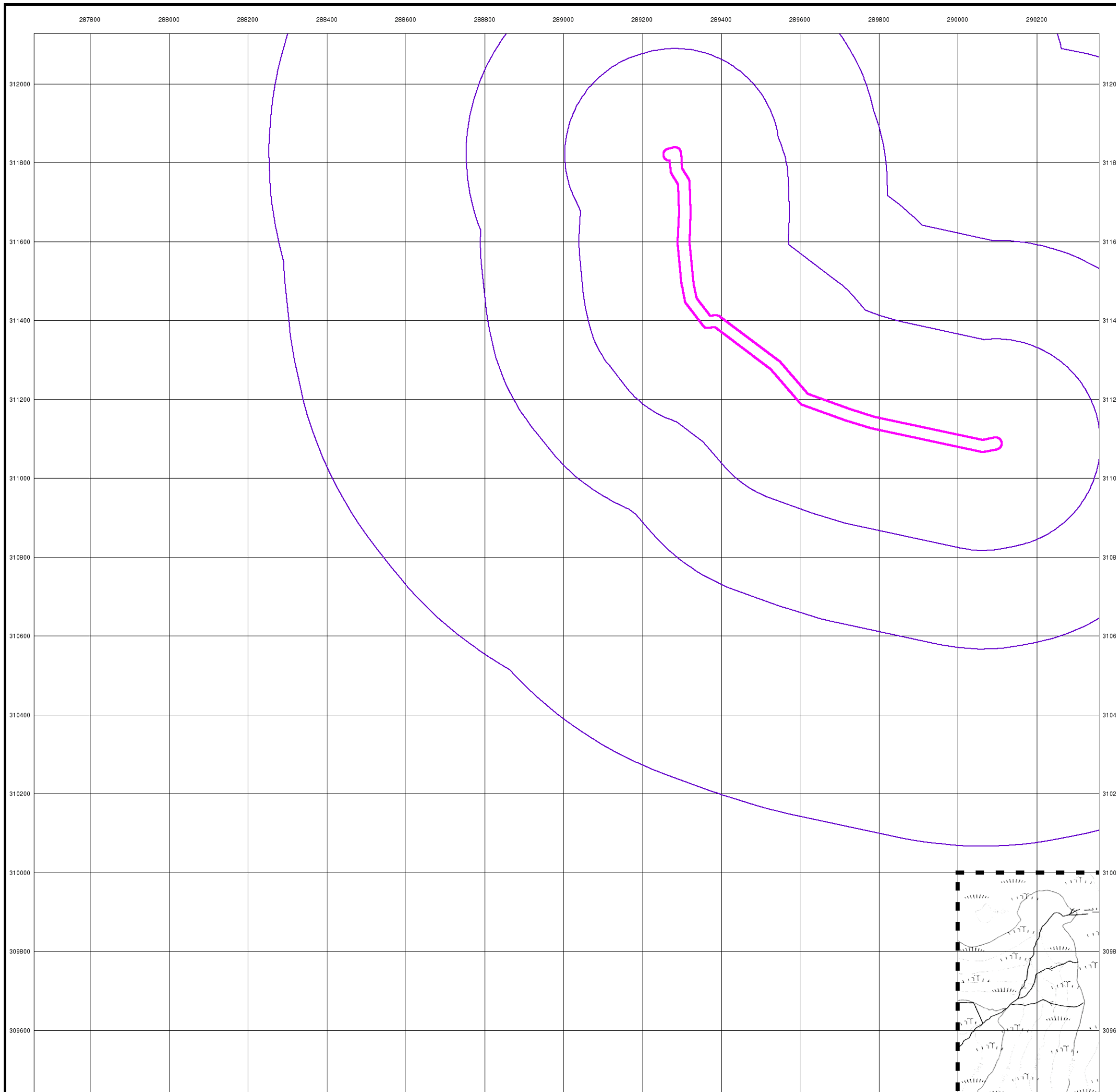


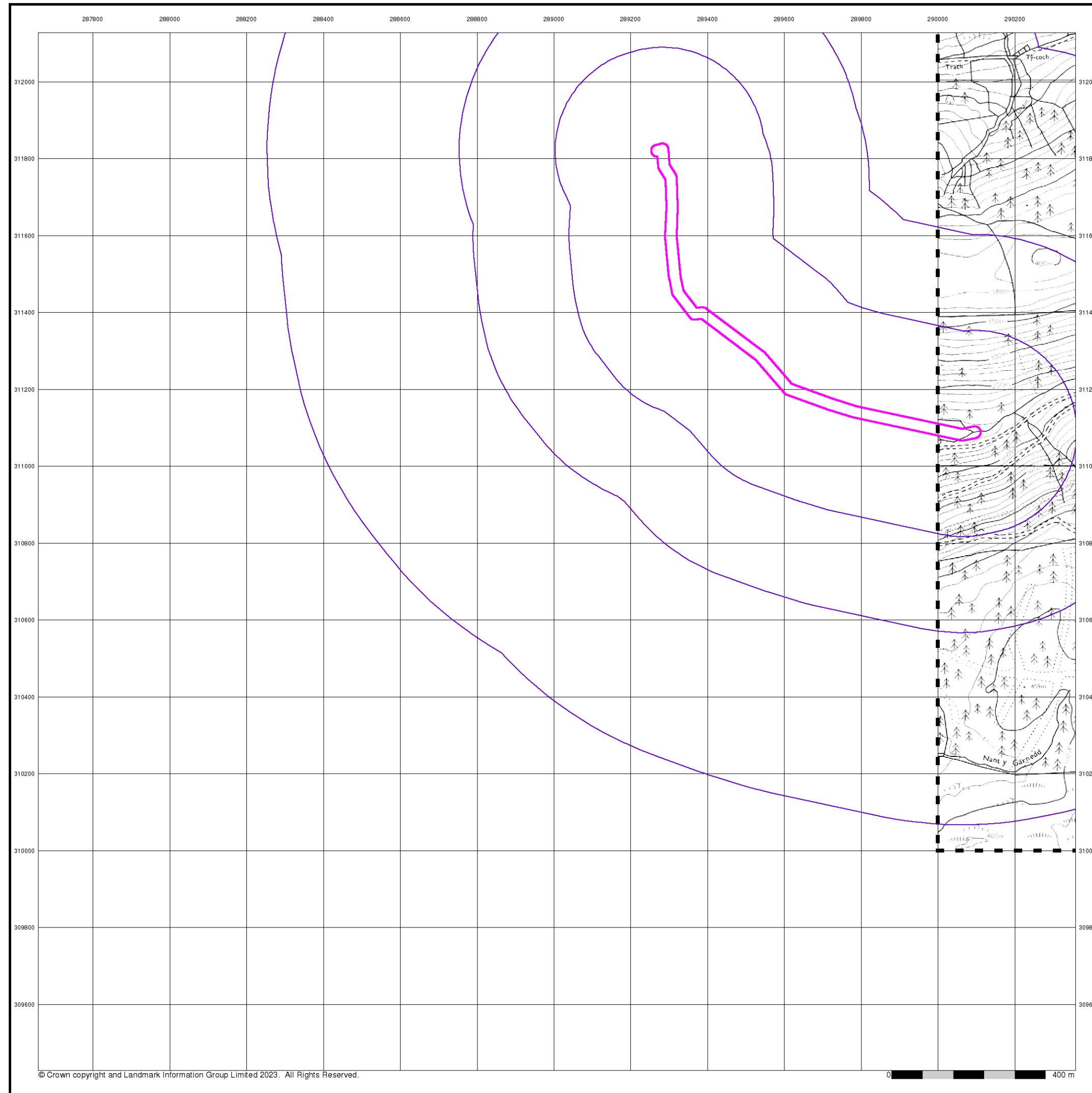
Order Details

Order Number: 307190281_1_1
Customer Ref: E34076 JGP
National Grid Reference: 289420, 311210
Slice: A
Site Area (Ha): 3.93
Search Buffer (m): 1000

Site Details

Ty Mawr, Mallwyd, MACHYNLLETH, SY20 9HS





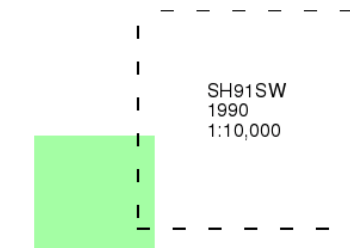
Ordnance Survey Plan

Published 1990

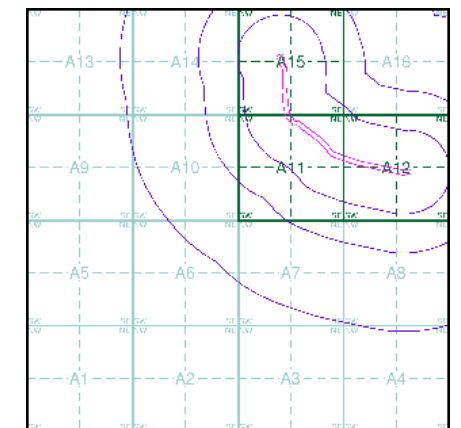
Source map scale - 1:10,000

The historical maps shown were reproduced from maps predominantly held at the scale adopted for England, Wales and Scotland in the 1840's. In 1854 the 1:2,500 scale was adopted for mapping urban areas; these maps were used to update the 1:10,560 maps. The published date given therefore is often some years later than the surveyed date. Before 1938, all OS maps were based on the Cassini Projection, with independent surveys of a single county or group of counties, giving rise to significant inaccuracies in outlying areas. In the late 1940's, a Provisional Edition was produced, which updated the 1:10,560 mapping from a number of sources. The maps appear unfinished - with all military camps and other strategic sites removed. These maps were initially overprinted with the National Grid. In 1970, the first 1:10,000 maps were produced using the Transverse Mercator Projection. The revision process continued until recently, with new editions appearing every 10 years or so for urban areas.

Map Name(s) and Date(s)



Historical Map - Slice A

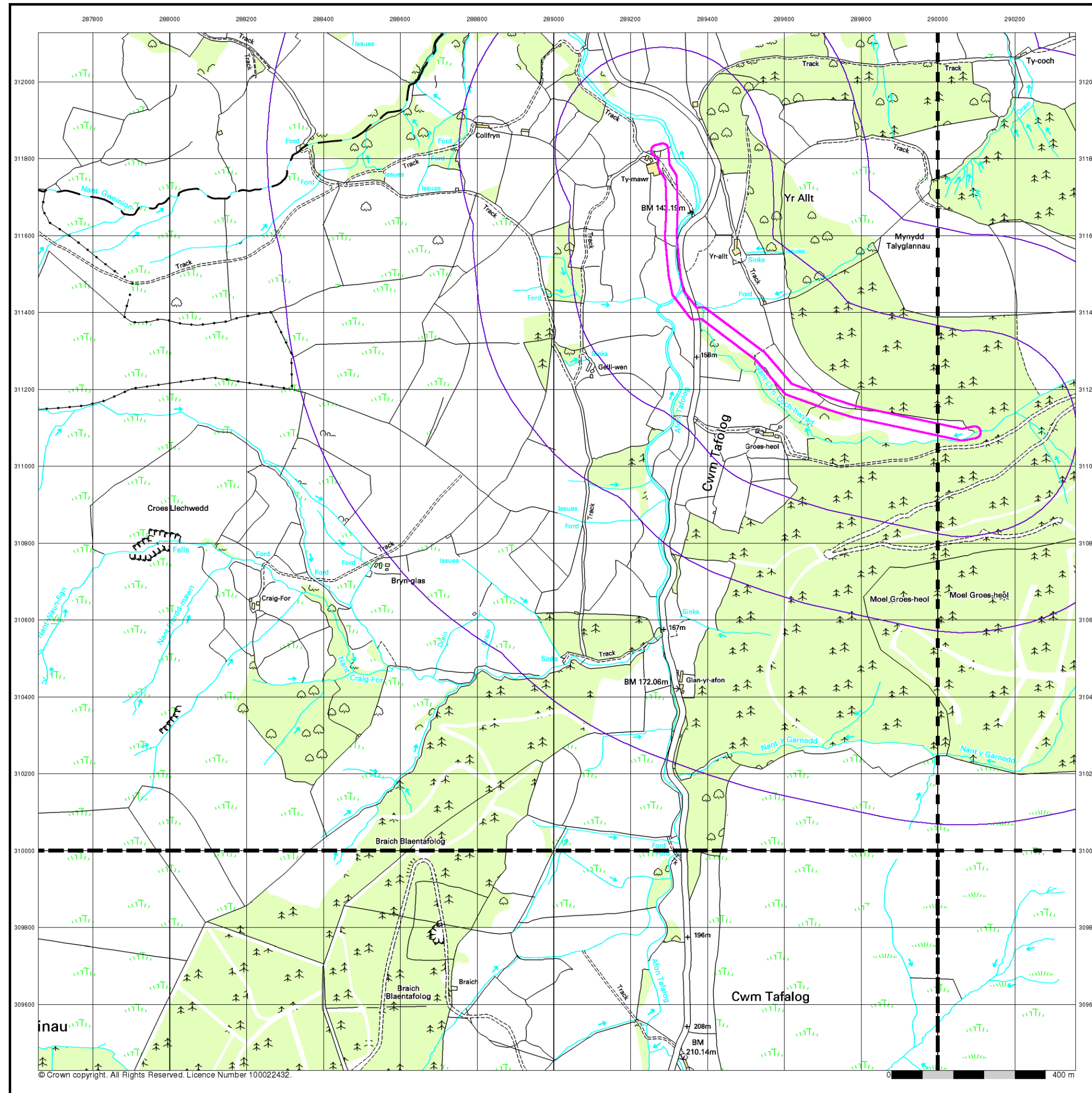


Order Details

Order Number: 307190281_1_1
 Customer Ref: E34076 JGP
 National Grid Reference: 289420, 311210
 Slice: A
 Site Area (Ha): 3.93
 Search Buffer (m): 1000

Site Details

Ty Mawr, Mallwyd, MACHYNLLETH, SY20 9HS



Envirocheck®

LANDMARK INFORMATION GROUP™

10k Raster Mapping

Published 2000

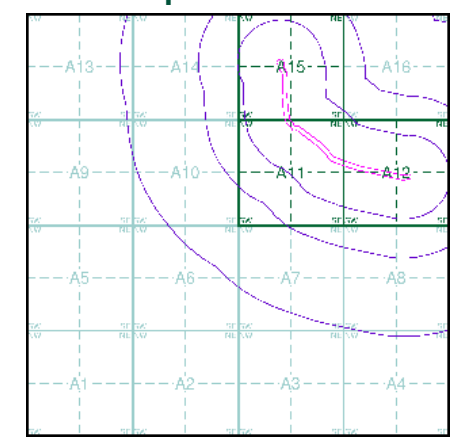
Source map scale - 1:10,000

The historical maps shown were produced from the Ordnance Survey's 1:10,000 colour raster mapping. These maps are derived from Landplan which replaced the old 1:10,000 maps originally published in 1970. The data is highly detailed showing buildings, fences and field boundaries as well as all roads, tracks and paths. Road names are also included together with the relevant road number and classification. Boundary information depiction includes county, unitary authority, district, civil parish and constituency.

Map Name(s) and Date(s)

SH81SE	SH91SW
2000	2000
1:10,000	1:10,000
SH80NE	SH90NW
2000	2000
1:10,000	1:10,000

Historical Map - Slice A



Order Details

Order Number: 307190281_1_1
 Customer Ref: E34076 JGP
 National Grid Reference: 289420, 311210
 Slice: A
 Site Area (Ha): 3.93
 Search Buffer (m): 1000

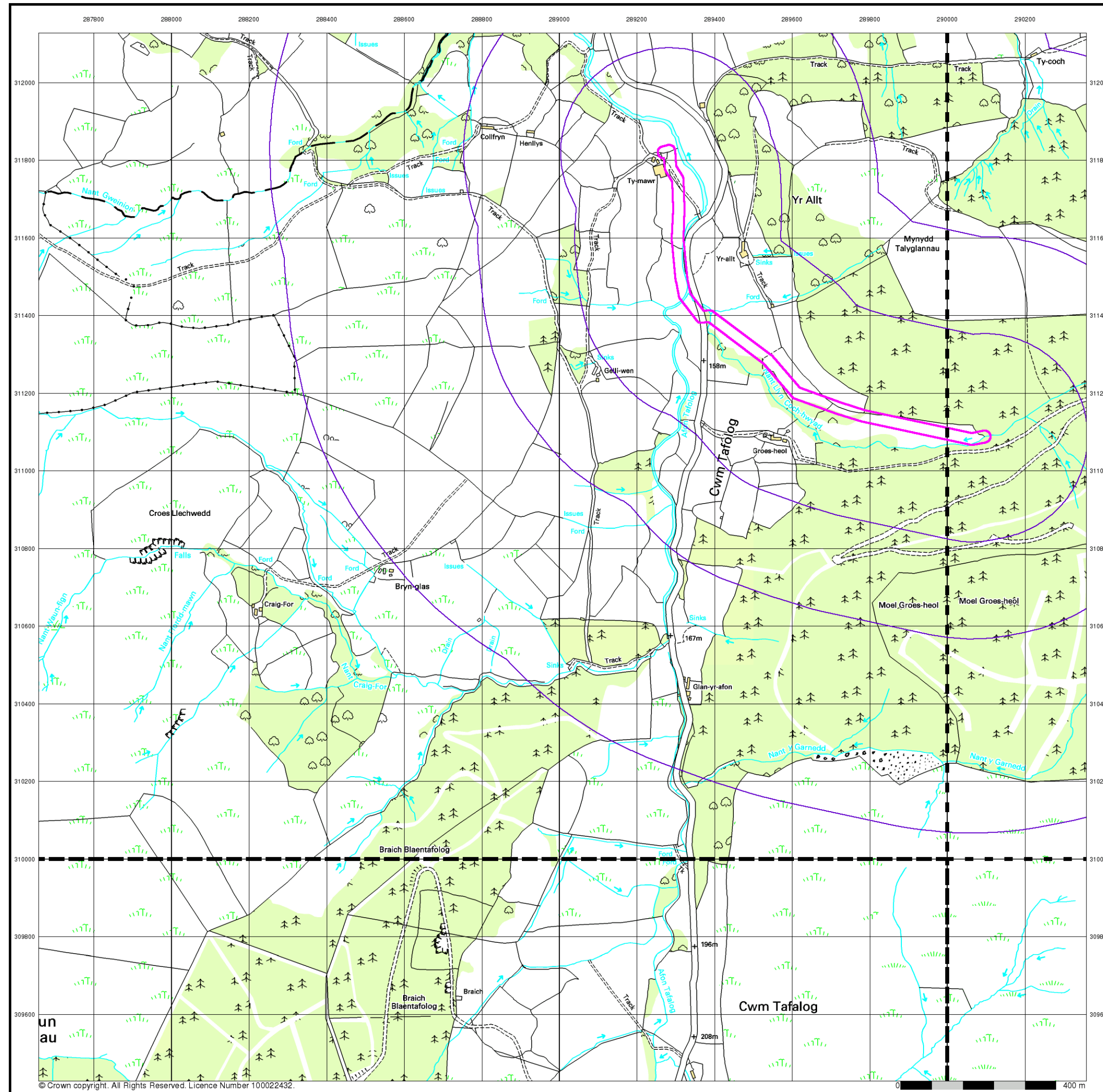
Site Details

Ty Mawr, Mallwyd, MACHYNLLETH, SY20 9HS

Landmark
 INFORMATION GROUP

Tel: 0844 844 9952
 Fax: 0844 844 9951
 Web: www.envirocheck.co.uk

© Crown copyright. All Rights Reserved. Licence Number 100022432.



Envirocheck®

● LANDMARK INFORMATION GROUP™

10k Raster Mapping

Published 2006

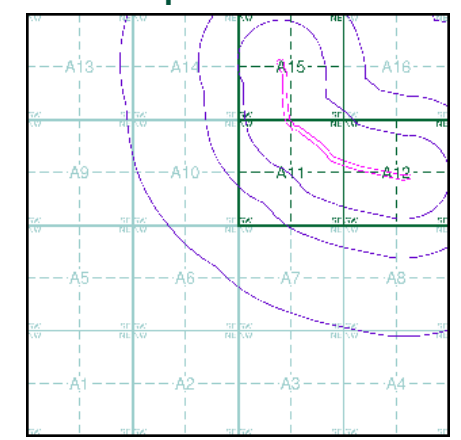
Source map scale - 1:10,000

The historical maps shown were produced from the Ordnance Survey's 1:10,000 colour raster mapping. These maps are derived from Landplan which replaced the old 1:10,000 maps originally published in 1970. The data is highly detailed showing buildings, fences and field boundaries as well as all roads, tracks and paths. Road names are also included together with the relevant road number and classification. Boundary information depiction includes county, unitary authority, district, civil parish and constituency.

Map Name(s) and Date(s)

SH81SE 2006 1:10,000	SH91SW 2006 1:10,000
SH80NE 2006 1:10,000	SH90NW 2006 1:10,000

Historical Map - Slice A



Order Details

Order Number: 307190281_1_1
 Customer Ref: E34076 JGP
 National Grid Reference: 289420, 311210
 Slice: A
 Site Area (Ha): 3.93
 Search Buffer (m): 1000

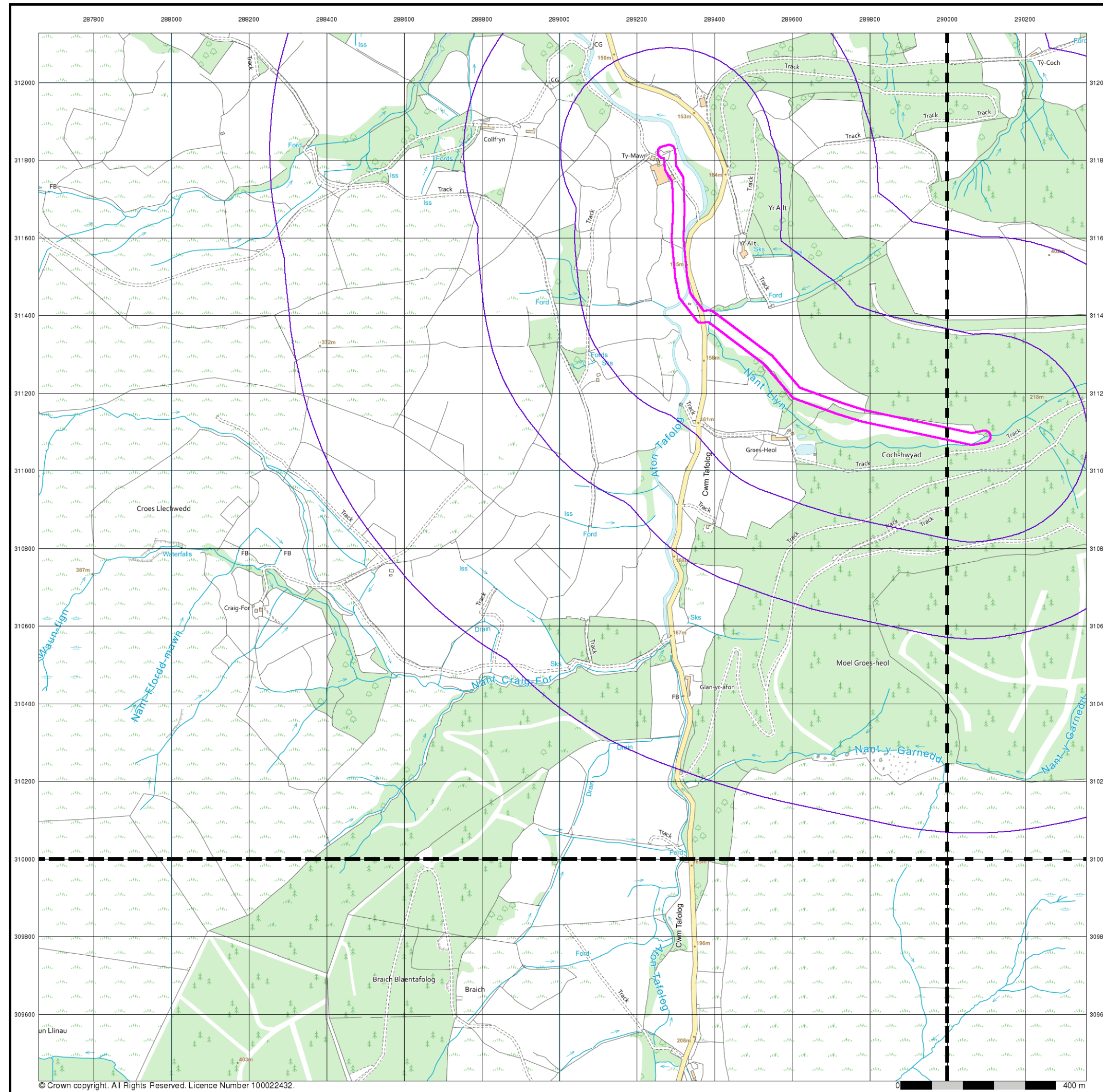
Site Details

Ty Mawr, Mallwyd, MACHYNLLETH, SY20 9HS

Landmark
 ● LANDMARK INFORMATION GROUP

Tel: 0844 844 9952
 Fax: 0844 844 9951
 Web: www.envirocheck.co.uk

© Crown copyright. All Rights Reserved. Licence Number 100022432.



VectorMap Local

Published 2022

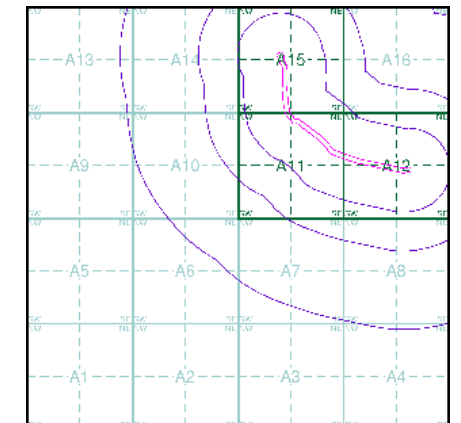
Source map scale - 1:10,000

VectorMap Local (Raster) is Ordnance Survey's highest detailed 'backdrop' mapping product. These maps are produced from OS's VectorMap Local, a simple vector dataset at a nominal scale of 1:10,000, covering the whole of Great Britain, that has been designed for creating graphical mapping. OS VectorMap Local is derived from large-scale information surveyed at 1:1250 scale (covering major towns and cities), 1:2500 scale (smaller towns, villages and developed rural areas), and 1:10 000 scale (mountain, moorland and river estuary areas).

Map Name(s) and Date(s)

SH81SE 2022 Variable	SH91SW 2022 Variable
SH80NE 2022 Variable	SH90NW 2022 Variable

Historical Map - Slice A



Order Details

Order Number: 307190281_1_1
 Customer Ref: E34076 JGP
 National Grid Reference: 289420, 311210
 Slice: A
 Site Area (Ha): 3.93
 Search Buffer (m): 1000

Site Details

Ty Mawr, Mallwyd, MACHYNLLETH, SY20 9HS