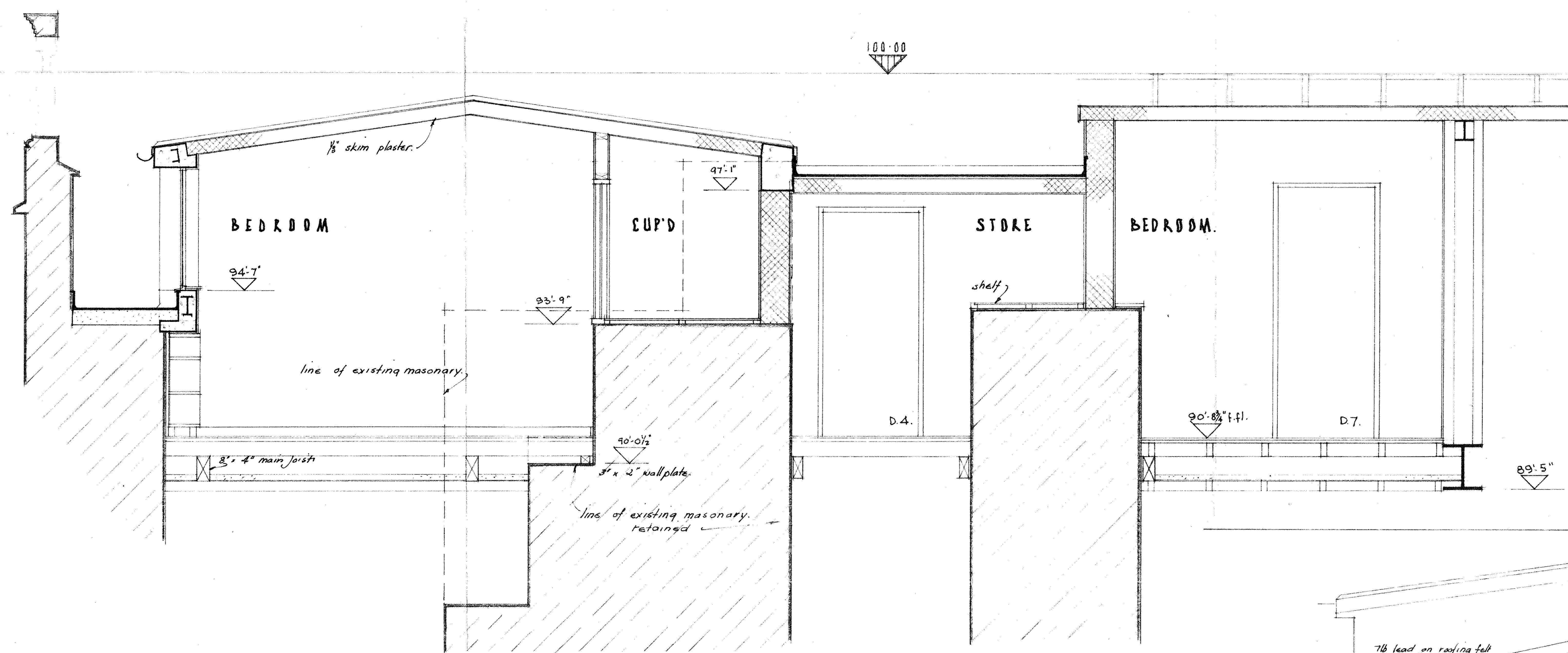
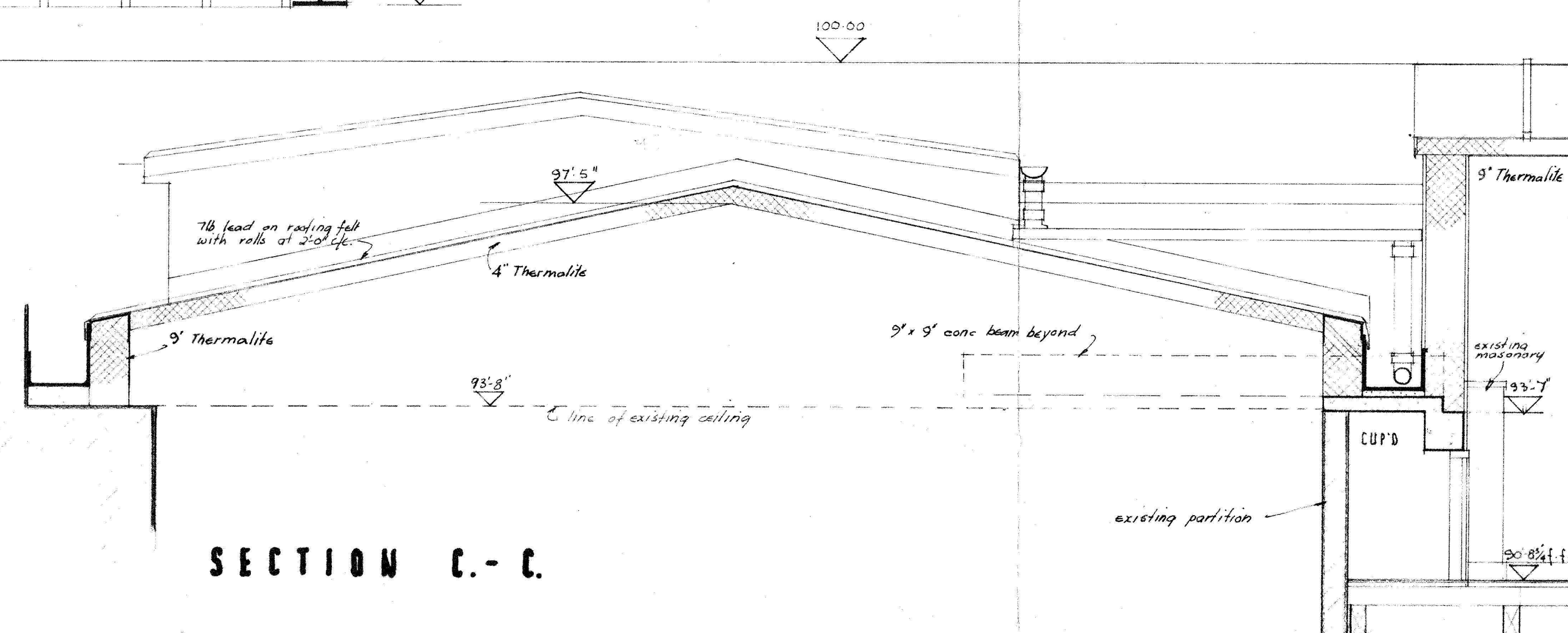


SECTION A - A.



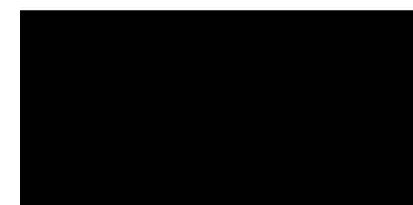
SECTION B - B.




SECTION C - C.

| No | DATE | NOTES | S |
|----|------|-------|---|
| | | | |

THE CONTRACTOR AND HIS SUB CONTRACTORS ARE TO VERIFY ALL MEASUREMENTS BEFORE MAKING SHOP DRAWINGS OR COMMENCING MANUFACTURE


The Treasurer of
Christ Church, Oxford.

 I.D.
DIRECTOR.
5th November 1962.


THIS IS ONE OF THE DRAWINGS REFERRED TO IN THE CONTRACT, DATED: - 14th November 1962.

| | | |
|----------|---|--------|
| 18.24.62 | floor levels amended floor finish amended | W.B. |
| A.19.62 | FLOOR FINISH AMENDED F.F.L. AMENDED | D.C.A. |

| No | DATE | REVISIONS | S |
|----|------|-----------|---|
| | | | |

CHRIST CHURCH - OXFORD
TOM QUAD W. SIDE N. BLOCK

SECTIONS.
DUNDAS SET

| | | |
|-------|---|----------------|
| SCALE | 1/2" = 1'-0" | DRAWING NUMBER |
| DATE | 25th July 62 | 443/104 |
| DRAWN |  | |

PLAYNE & LACEY & PARTNERS
ARCHITECTS
19 QUEEN ANNE'S GATE, WESTMINSTER, S.W.1