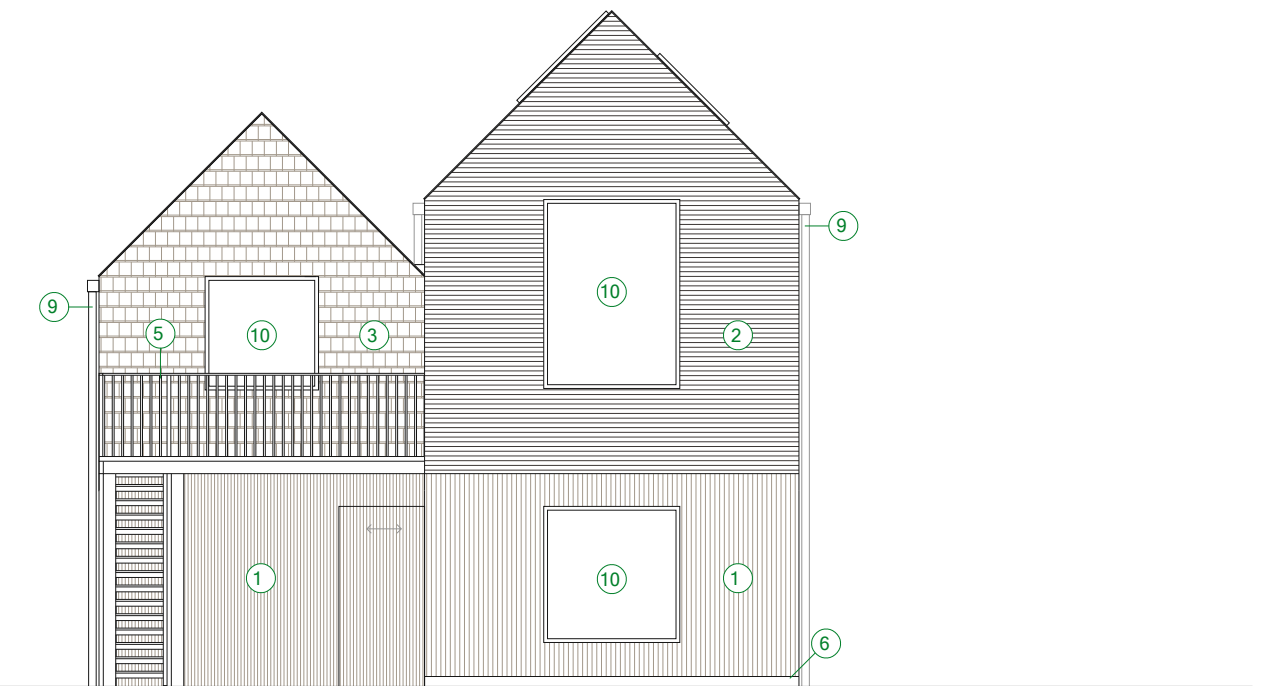
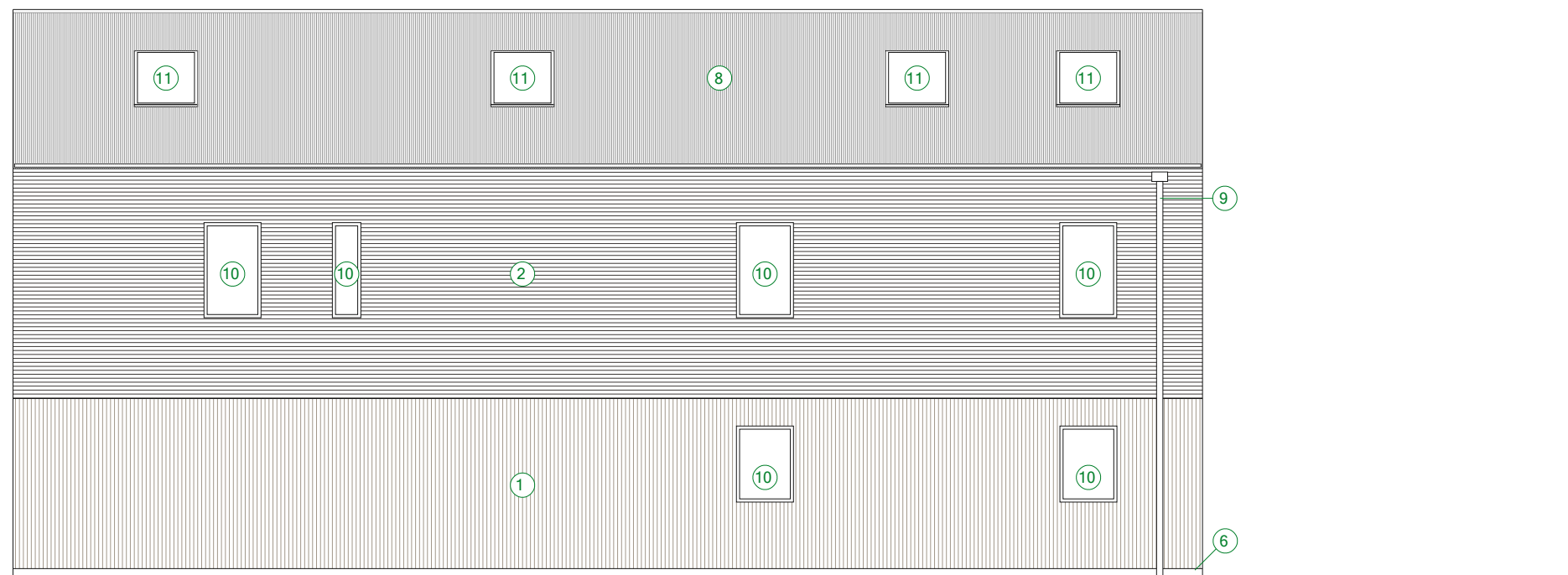


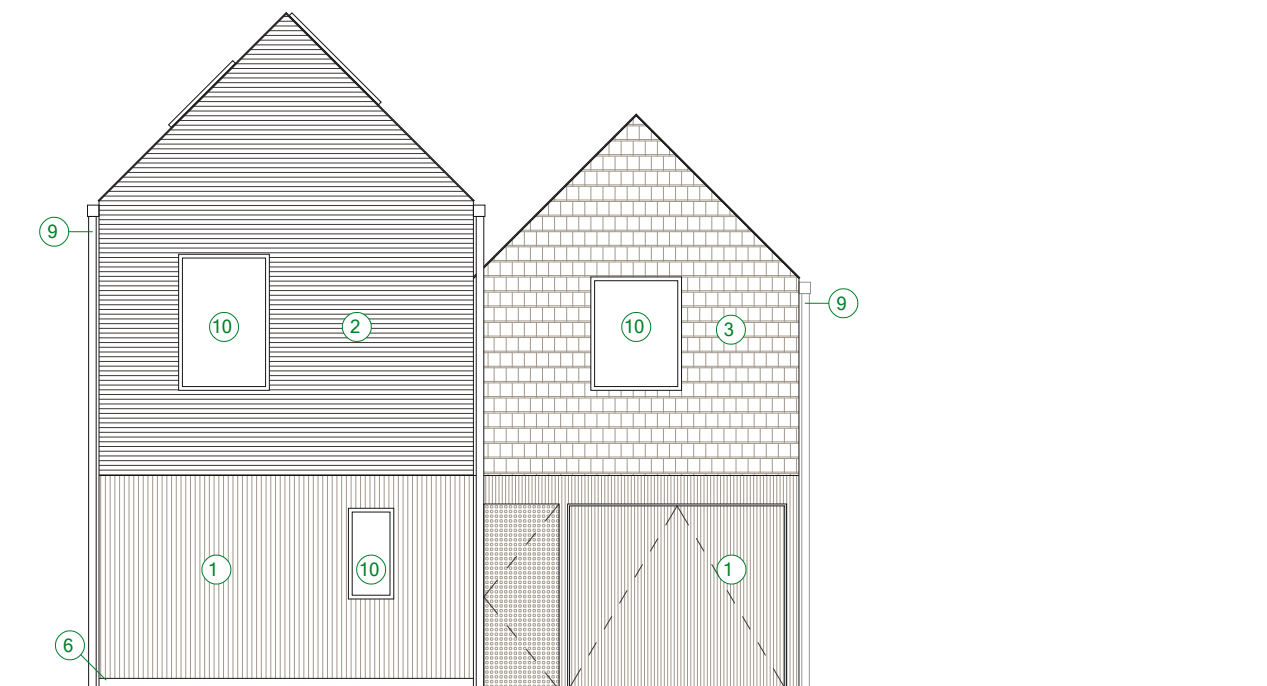
South Elevation



East Elevation



North Elevation

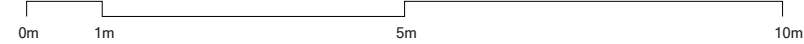


West Elevation

External Finishes Key

- ① Natural finish timber cladding
- ② Black stained or charred timber cladding
- ③ Tear-drop timber shingles
- ④ Timber decking
- ⑤ Timber balustrades + handrails
- ⑥ Plinth - black painted
- ⑦ PV solar panels
- ⑧ Metal corrugated sheet roofing
- ⑨ Rainwater down pipe, black or stainless steel finish
- ⑩ Triple glazed window or door, timber frame with aluminium exterior
- ⑪ Triple glazed rooflight, timber frame with aluminium exterior

PLANNING



Rev	Date	Description	Drwn	Chkd
A	14/09/23	Preliminary	TB	--

Rev	Date	Description	Drwn	Chkd

Rev	Date	Description	Drwn	Chkd

- Contractors should not scale from this drawing. Use figured dimensions only.
- Any discrepancies shall be brought to the attention of Studio Bark for resolution.
- These drawings are for planning purposes and should not be used for construction.
- Structural and services information shown is indicative only. Refer to consultants' drawings for details and setting out.
- Copyright notice: Studio Bark owns the copyright of these drawings which must not be reproduced in whole or part without the written permission of Studio Bark.

A265 - Easton Bavents

Proposed Elevations for House Type 1						
Drawn	Checked	Date	Scale	Job Ref	Drawing Number	Rev
TB	WM	Nov 23	1:100 @ A2	A265	2101	A