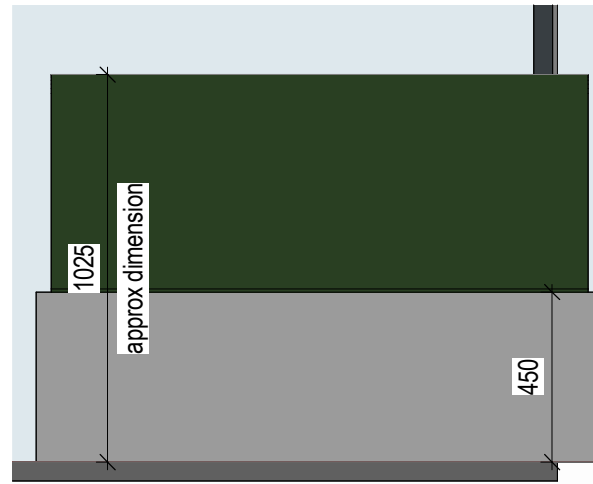
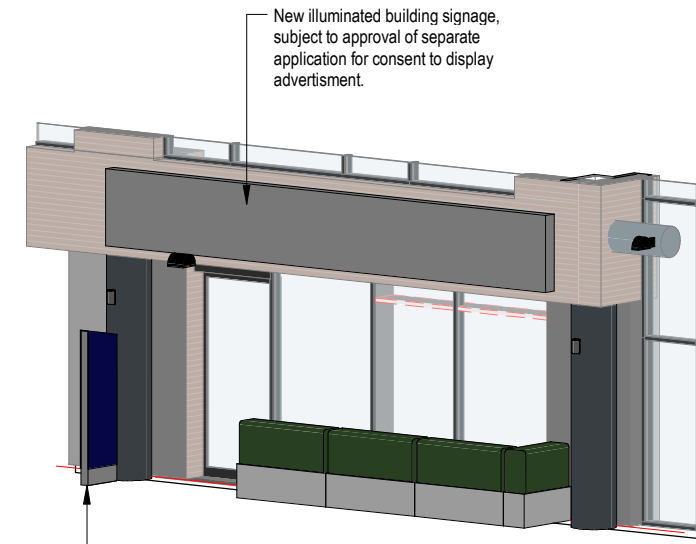


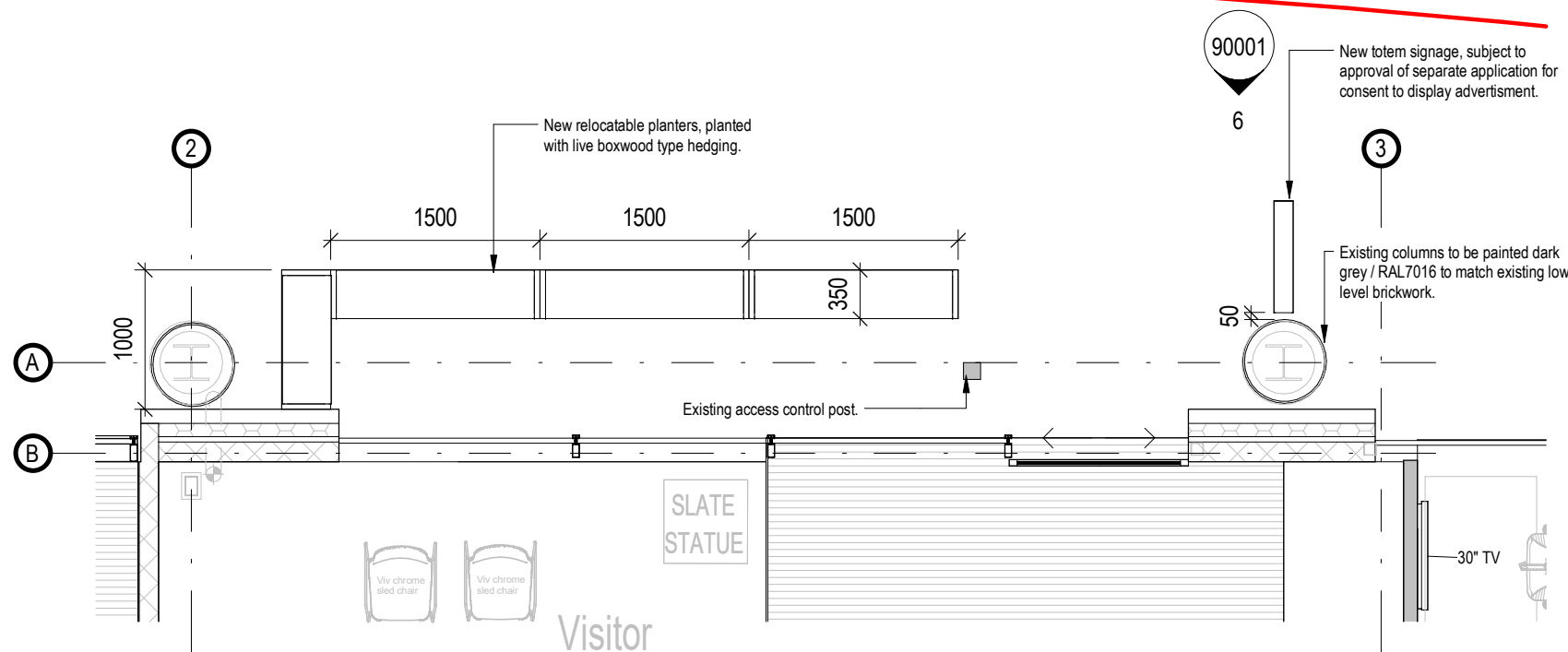
Planter 3D
Scale:



Planter Elevation
Scale: 1 : 20



Entrance 3D visual
Scale:



Ground Floor - Entrance Planters
Scale: 1 : 50

Notes:
© Rio Architects Ltd.
This drawing is copyright and must not be reproduced or disclosed to third parties without the prior written consent of Rio Architects Ltd.

Do not scale this drawing. Responsibility is not accepted by Rio Architects Ltd for errors made by others during the printing or scaling of this drawing. Use only written dimensions. It is the contractor's responsibility to verify all dimensions before commencing any work. Any discrepancies are to be notified in writing to Rio Architects Ltd immediately.

This drawing is to be read in conjunction with all other relevant project drawings, specifications and schedules prepared by Rio Architects Ltd and any other relevant consultants, specialists or subcontractors.

CDM notes are provided to assist the contractor in managing residual hazards identified during the design stage. Any such notes do not relieve the contractor of their duties under all relevant CDM Regulations.

Note

All signage proposals to be reviewed and confirmed by OU branding team for acceptability & conformity with their branding guidelines.

Building signage and Totem design intent only. Signage design to be developed by specialist sub contractor in keeping with the design intent proposals.

Rev	Description	Rev'd	Chk'd	Date
P1	Drawings issued for Planning	NJ	RR	15/01/24

SUITABILITY : S0

STATUS NUMBER KEY:

WIP S0 - Initial Status*	DOCUMENTATION - SIGN-OFF A1 - Authorised and Accepted B1 - Partially Signed-off.
SHARED S1 - Suitable for co-ordination** S2 - Suitable for information S3 - Suitable for review and comment S4 - Suitable for stage approval S5 - Withdrawn S6 - Suitable for PIM Authorisation S7 - Suitable for AIM Authorisation	ARCHIVE CR - Final Construction Record Document * For internal pre-issue usage only. ** For model file usage only.



Rio Cardiff 21a Allensbank Road Cardiff CF14 3PN +44 (0)29 2025 0066	Rio London 19 21 Hatton Garden London EC1N 8BA +44 (0)20 3691 7565	Rio Scotland Suite 68, 4-5 Lochside Way Edinburgh EH12 9DT t +44 (0) 131 297 2101
--	--	---



PROJECT TITLE:
OUIW Refurbishment

DRAWING TITLE:
Entrance Planters

DRAWN BY: NJ CHECKED BY: CB APPROVED BY: RR

JOB NO: 0490 SCALE: As indicated @ A3

STATUS: PLANNING							
DATE:	05/01/24			REVISION:	P1		
PROJECT	ORIGIN	VOLUME	LEVEL	TYPE	DISCIP.	NUMBER	
0490	RIO	01	00	DR	A	90001	