

&gt; DATASHEET

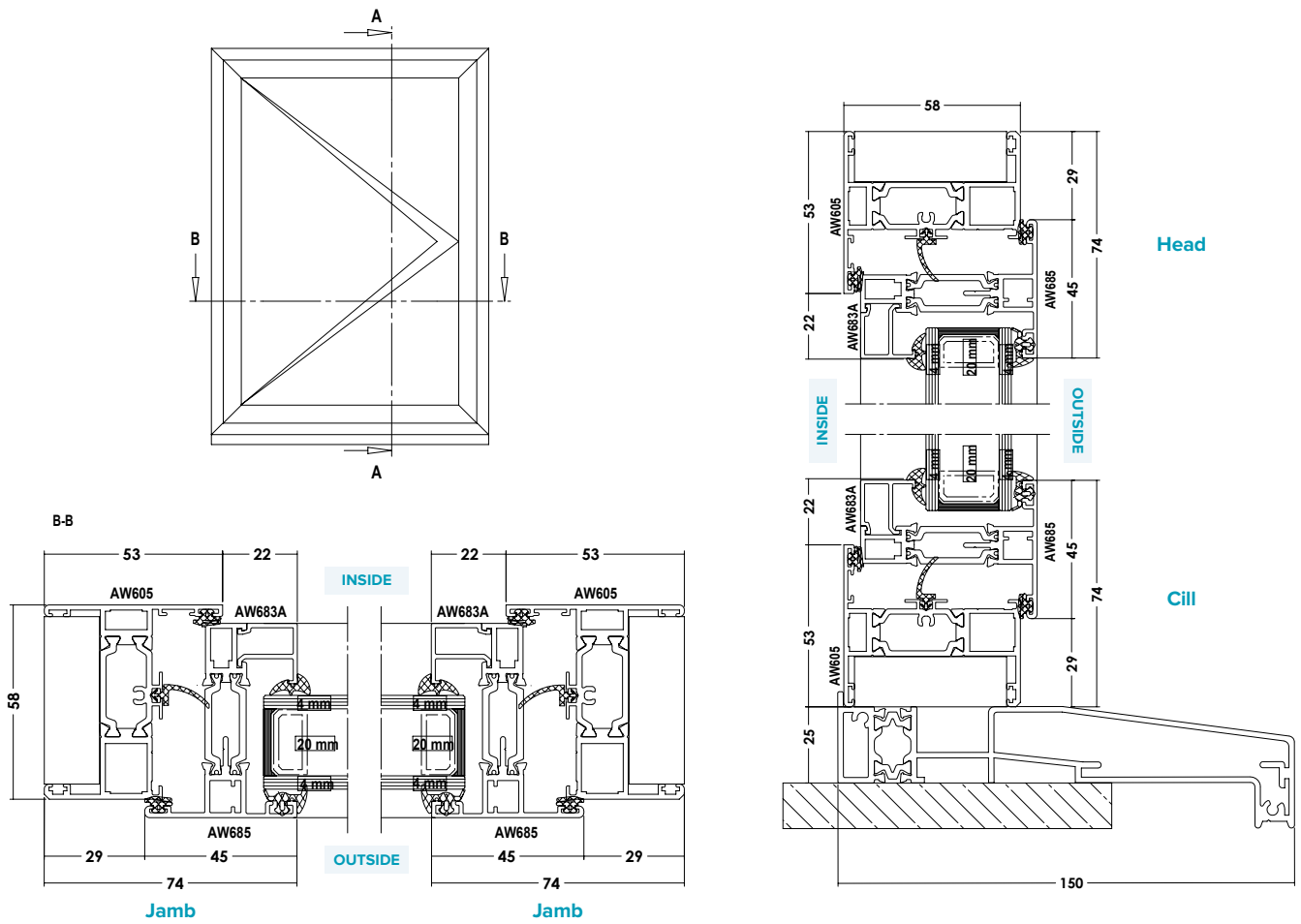
# SLIMLINE CASEMENT WINDOW



## FEATURES

- > **ELEGANT AESTHETICS**  
Slim and modern aluminium frames with sightlines starting from just 74mm
- > **ENERGY EFFICIENT**  
58mm or 70mm deep thermally broken frame achieves U-Values as low as 1.4 W/m<sup>2</sup>K with a double glazed unit, and a B-C rating on the BFRC WER scheme
- > **HEIGHTENED SECURITY**  
Features multi-point locking system, PAS 24 and Secured By Design Certified, and in compliance with Part Q of the building regulations
- > **FLEXIBLE CONFIGURATIONS**  
Choose from top hung, side hung, dummy sash, or French casement
- > **GLAZING OPTIONS**  
Internal Glazed with 28mm glazing thickness
- > **CHOICE OF FINISH**  
Available in any single RAL colour, dual colour, textured or an anodised finish

TECHNICAL DRAWINGS



SIZE & WEIGHT LIMITS	
<b>Top Hung</b>	
Max Size (mm)	1400w x 1200h
Min Size (mm)	352w x 352h
Max Weight	35kg
<b>Side Hung</b>	
Max Size (mm)	700w x 1400h
Min Size (mm)	352w x 352h
Max Weight	26kg
<b>Bottom Hung</b>	
Max Size (mm)	-
Min Size (mm)	-
Max Weight	50kg (2 hinges)
<b>Fixed Light</b>	
Max Size (mm)	-
Min Size (mm)	-
Max Weight	250kg

PERFORMANCE	
U-Value (Double Glazing)	(Ug: 1.0 W/m²K) 1.4 W/m²K
U-Value (Triple Glazing)	(Ug: 0.7 W/m²K) 1.2 W/m²K
Window Energy Rating (WER)	A-B
BRE Green Guide Rating	A rated
Air Permeability	Class 4 (600 Pa)
Water Tightness	Class 9a (600pa)
Wind Resistance	Class E2400 (2400 Pa)
Acoustic Performance	Rw (C;Ctr) 42 (-1;-5) dB
Security	PAS 24 & SBD
3rd Party Certification Q Mark	✓

BUILDING REGULATIONS	
Part L	Compliant
Part F	Compliant
Part M	Compliant
Part Q	Compliant

SIGHTLINES	
Head	74mm
Cill	99mm
Jamb	74mm
Mullion	79mm

FINISHES	
Single Colour	✓
Dual Colour	✓
Textured Finish	✓
Anodised Finish	✓

DETAILS	
Frame Depth	58 / 70mm
Glazing Thickness	28mm