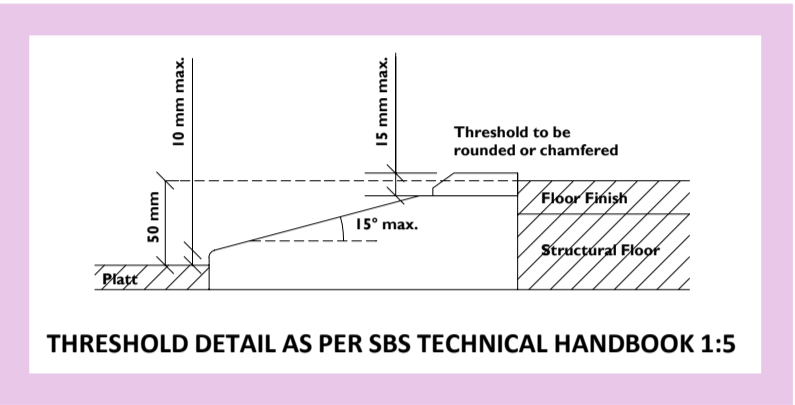
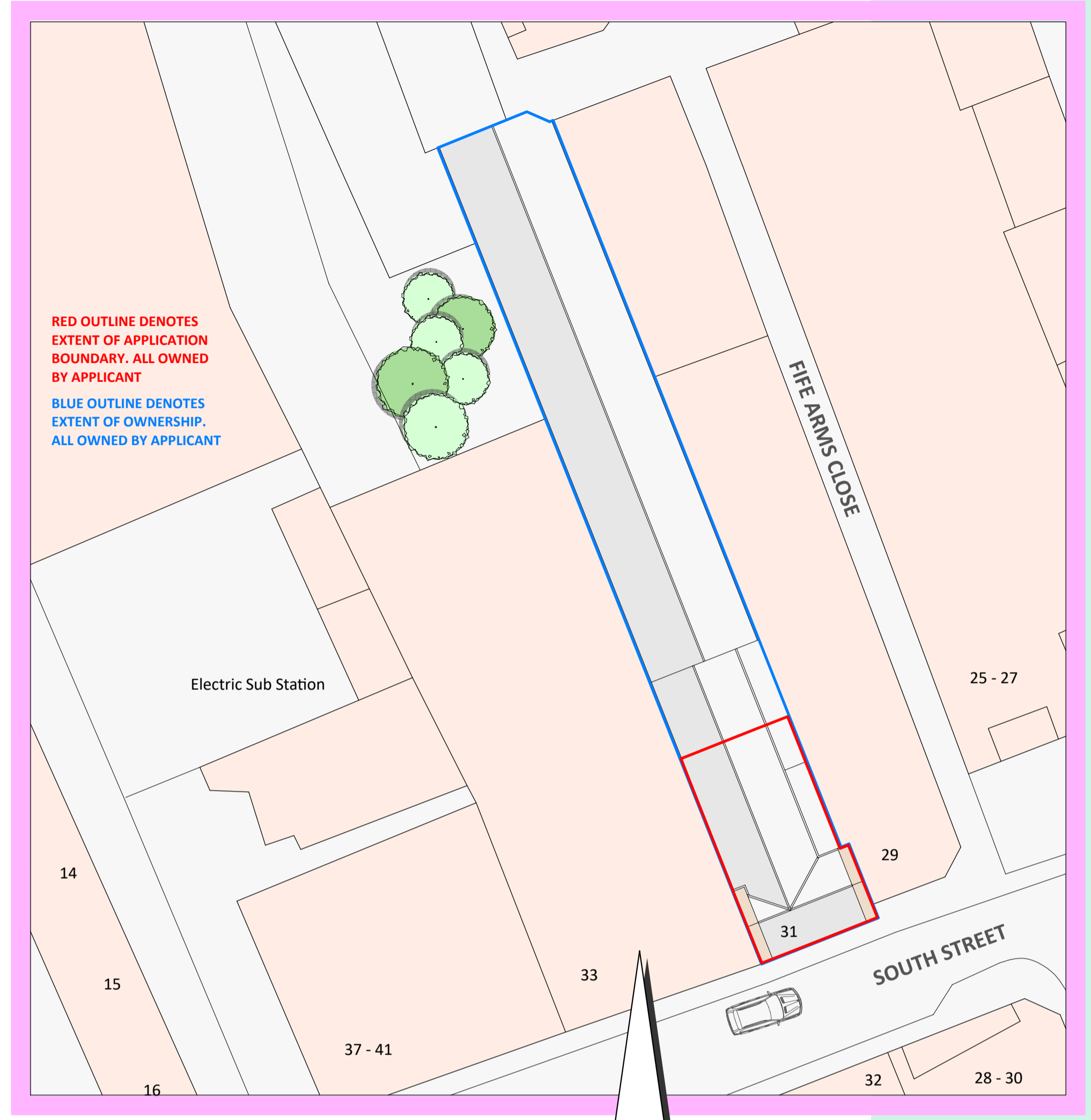


IMPROVED ROOF (AT SECOND FLOOR LEVEL, ABOVE ATTIC SPACE / STORE 1, STORE 2)  
 SSQ natural slates (16" x 10") or SEMACA natural slates (16" x 9") nominal thickness laid with 75mm min headlap. Fixing - 2 No copper or stainless steel or aluminium nails per slate to BS1210: Part 2. Large headed with a min. shank of 3.35mm. Slate and a half on alternate courses, all hips, verges abutments and rooflights.  
 See full specification

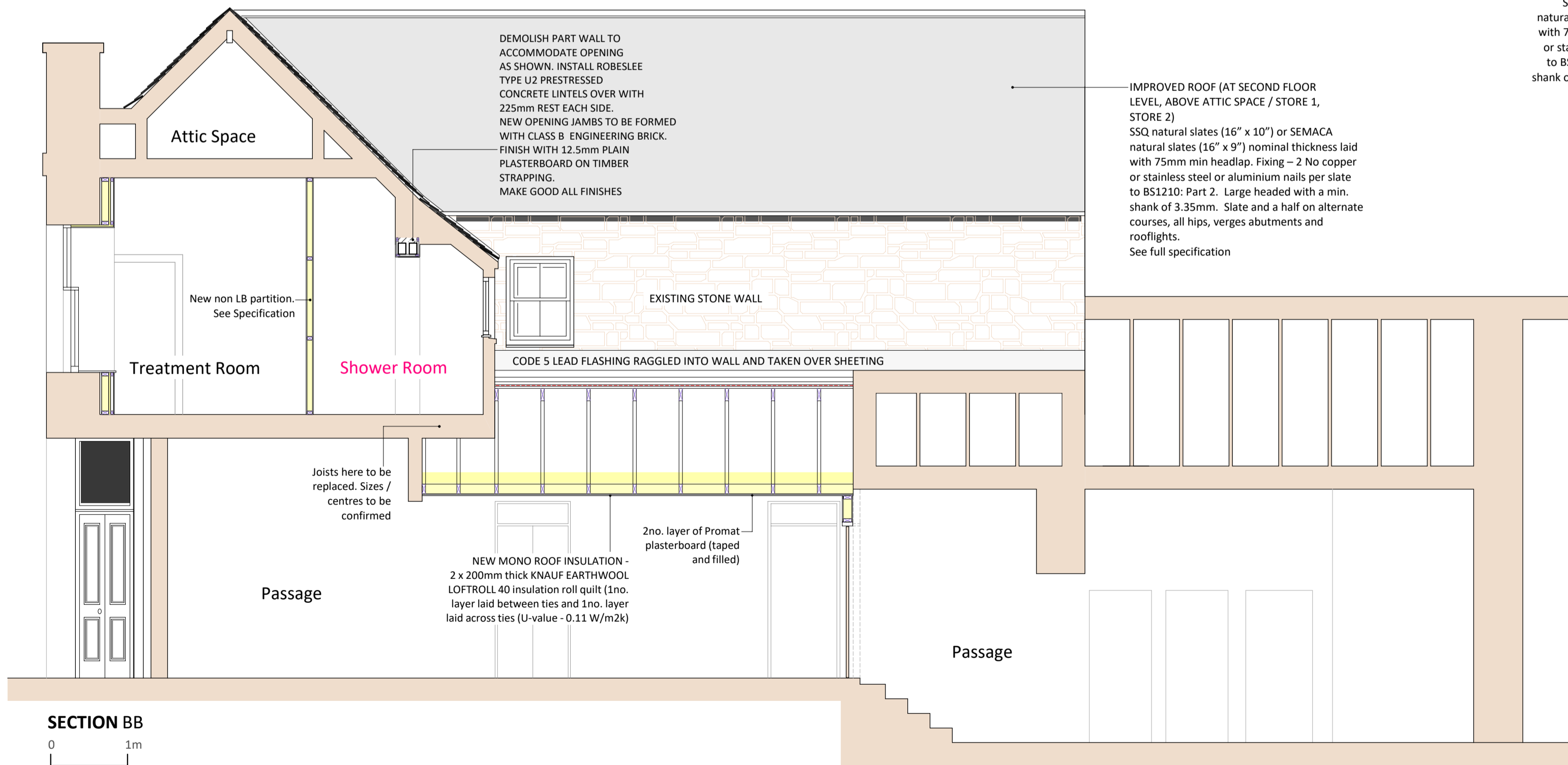


SECTION AA  
 0 1m  
 SCALE 1:50

Elgin

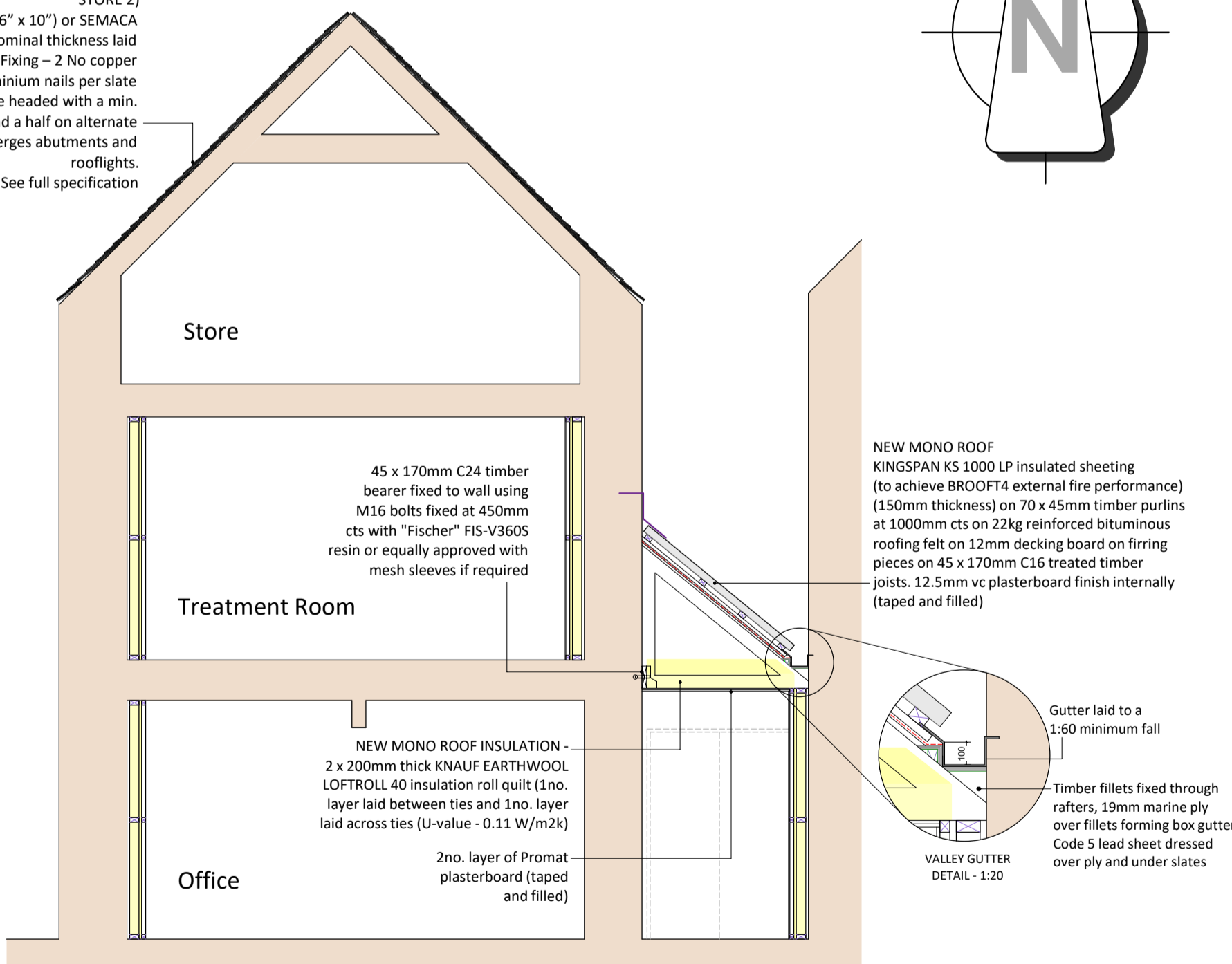


Site Plan (scale 1:250)



SECTION BB  
 0 1m  
 SCALE 1:50

IMPROVED ROOF (AT SECOND FLOOR LEVEL, ABOVE ATTIC SPACE / STORE 1, STORE 2)  
 SSQ natural slates (16" x 10") or SEMACA natural slates (16" x 9") nominal thickness laid with 75mm min headlap. Fixing - 2 No copper or stainless steel or aluminium nails per slate to BS1210: Part 2. Large headed with a min. shank of 3.35mm. Slate and a half on alternate courses, all hips, verges abutments and rooflights.  
 See full specification



SECTION CC  
 0 1m  
 SCALE 1:50

# S Reid Design

CHARTERED ARCHITECTURAL DESIGN SERVICE

- RURAL AND URBAN HOUSE DESIGN
- EXTENSIONS, ALTERATIONS, RENOVATIONS
- PLANNING CONSENTS
- BUILDING WARRANT APPROVALS
- 3D DESIGN + VISUALIZATIONS
- COMMERCIAL BUILDING DESIGN

S.REID MCIAT  
 CHARTERED ARCHITECTURAL TECHNOLOGIST  
 THE SMA GLEN, ROTHES, ABERLOUR, AB38 7AG  
 M - (07598) 299753  
 M - (07926) 151101  
 E - info@sreiddesign.co.uk  
 W - www.sreiddesign.co.uk

PROJECT  
**PROPOSED CHANGE OF USE OF PART FORMER PRINTING WORKS TO HAIRDRESSING SALON AND BEAUTY ROOMS AT OLD PRINTING WORKS, 31 SOUTH STREET, ELGIN, MORAY IV30 1JZ**

DRAWING DESCRIPTION  
**SECTION AA + BB + CC / SITE PLAN**

DRAWING no. PRINTWORKS / BW / 03 SCALE AS STATED (A1)

DRAWN BY S.Reid MCIAT DATE DEC 2023