

Project Name: Bampton Estate  
 Document Date: 12.01.2024  
 Document No: 93-BMT-SBA-00-ZZ-CL-A  
 Document Name: Hard Landscaping, Planning Condition 15 – Hard Landscape Material, Kerbs  
 Prepared By: Jeremy Randall (GML) 12.01.2024

Dear Antigoni Gkiza / to whom it may concern.

## Bampton Estate, Lewisham // Application to discharge Condition 15, Hard Landscape

We hereby seek to discharge Condition 15 – Hard Landscaping Phase 2 attached to planning consent DC/19/112918 amended under DC/21/123804.

New additional drawings and information submitted-

- 85-BMT-SBA-00-GF-DR-A.PL1 – Landscape Material Additional Information (1-3)
- 86-BMT-SBA-00-GF-DR-A.PL1 – Landscape Material Additional Information (2-3)
- 87-BMT-SBA-00-GF-DR-A.PL1 – Landscape Material Additional Information (3-3)
- 88-BMT-SBA-00-GF-DR-A – Landscape Material Data Sheets
- 93-BMT-SBA-00-ZZ-CL-A – Cover Letter

Amendments and reasons are as follows:

We are applying to have an alternative material specification approved for landscape materials E3 flush kerbs and E6 upstand kerbs.

Approved Drawings

- 61-BMT-SBA-00-GF-DR-A.PL2 - Hard Landscape Phase 2 (1-3)
- 62-BMT-SBA-00-GF-DR-A.PL2 - Hard Landscape Phase 2 (2-3)
- 63-BMT-SBA-00-GF-DR-A.PL2 - Hard Landscape Phase 2 (3-3)
- 71-BMT-SBA-00-ZZ-RP-A.PL1 - Data Sheets Hard Landscape Phase 2 (6)

Have a specification for E3 and E6 as

E3	FLUSH NATURAL KERB GRANITE - 125 X 250 X 1000 MM - SILVER GREY FLAMED BY AGGREGATE INDUSTRIES
E6	UPSTAND NATURAL KERB GRANITE - 150 X 300 X 1000 MM - SILVER GREY FLAMED BY AGGREGATE INDUSTRIES

We are requesting that the alternative material specification as shown on the submitted drawing be approved.

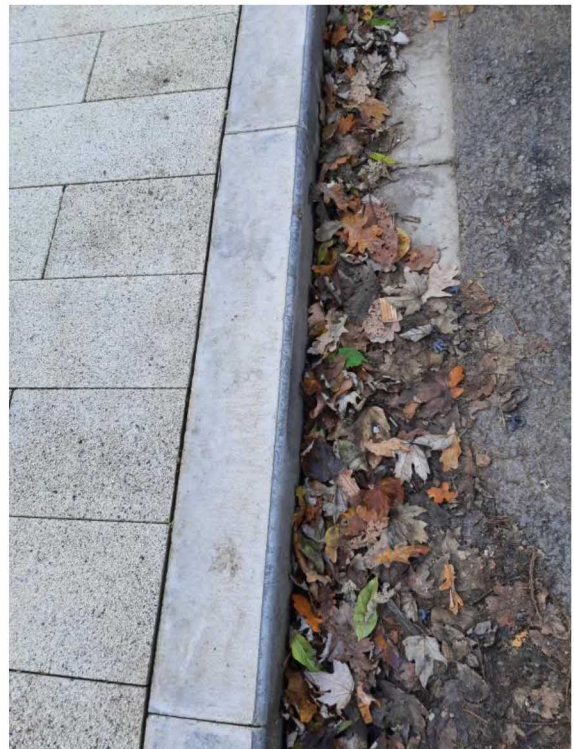
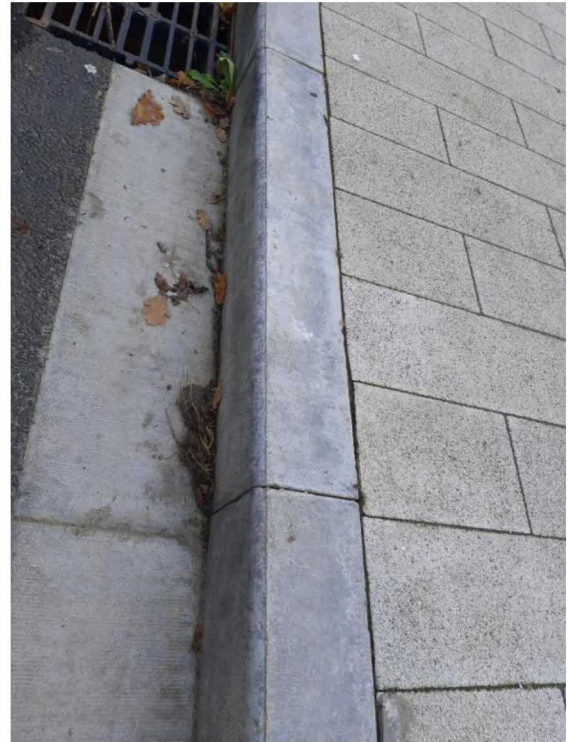
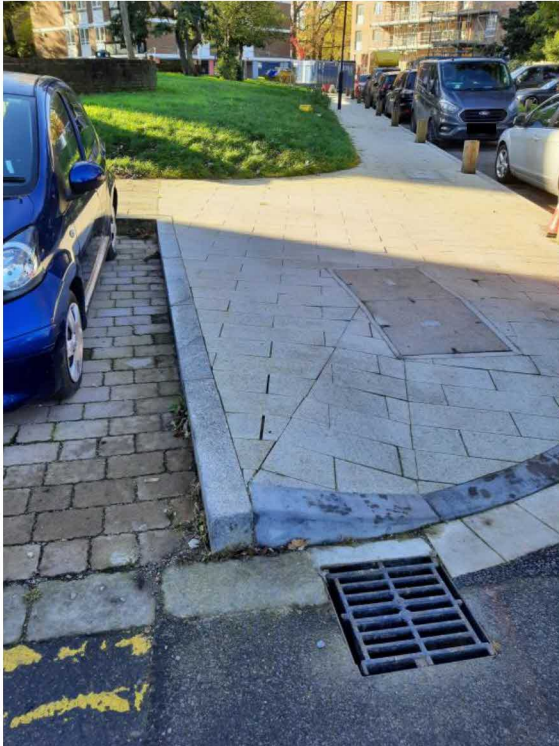
E3	FLUSH CONCRETE KERB - 125 X 255 X 915 MM - GREY SQUARE CHANNEL STRAIGHT BY MARSHALLS
E6	UPSTAND CONCRETE KERB - 150 X 305 X 915 MM - GREY BULLNOSED STRAIGHT BY MARSHALLS

The reason for the requested alternative material specification is that concrete kerbs have been installed by the sub contractor at Bampton Estate to match existing materials on site. The workmanship is of good quality and the material hard wearing in accordance with highways specifications. Removal of these and replacement with granite would be unnecessarily disruptive and wasteful.

See below for as installed photos.



**GUILDMORE**



Yours Sincerely,

Jeremy Randall Design Manager



**GUILDMORE LTD** 61 Widmore Road • Bromley • Kent BR1 3AA  
T 020 8313 5050 F 020 8313 5051 E [enquiries@guildmore.com](mailto:enquiries@guildmore.com) [www.guildmore.com](http://www.guildmore.com)