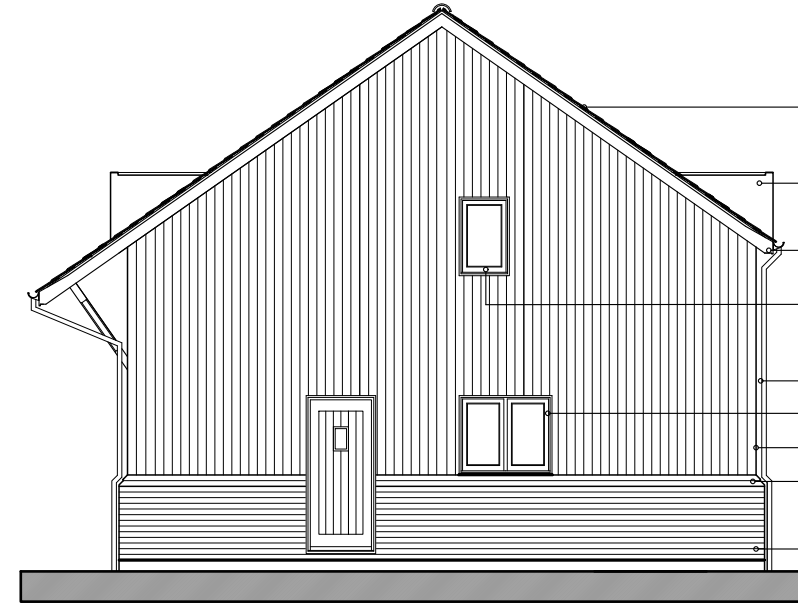


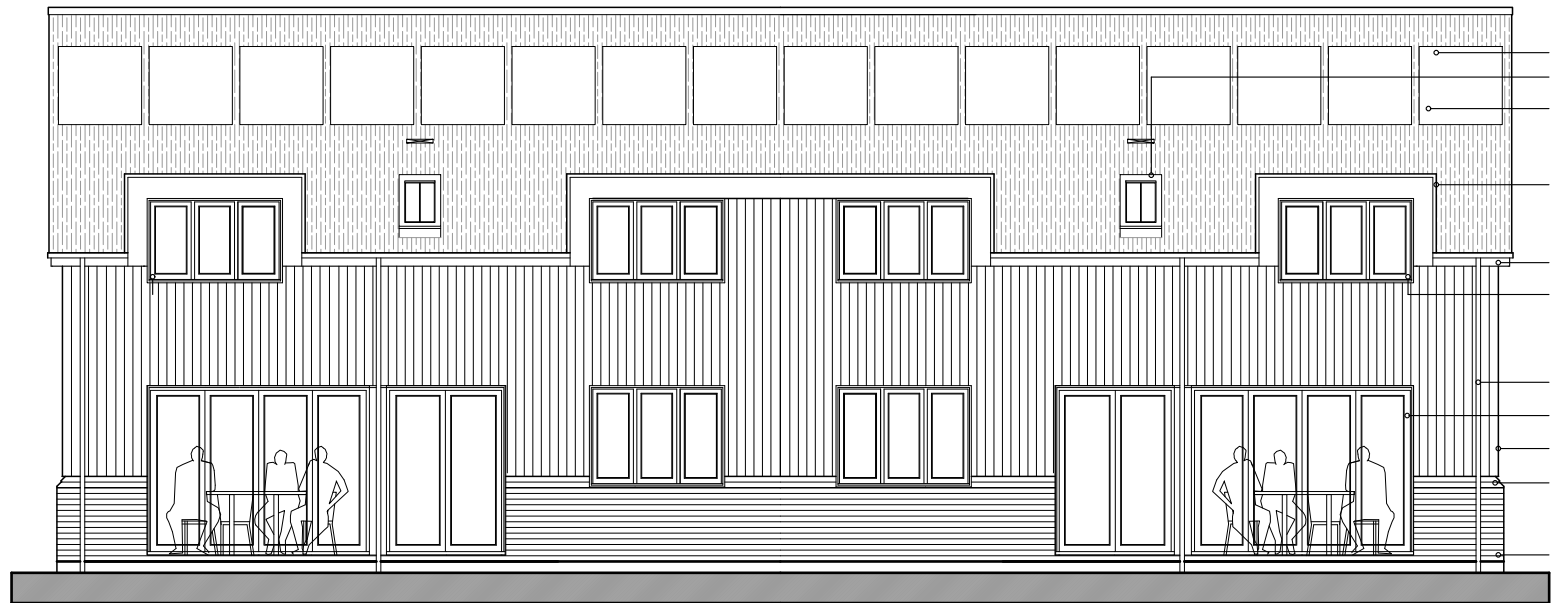
- metal face to fascia, soffit and dormer cheeks in dark grey finish
- Conservation type rooflight
- 42.5 deg clay tile pitched roof with half round ridge tiles, pointed verge, painted timber fascia & soffit
- PPC aluminium entrance screed with composite entrance door all in dark grey finish
- Timber fascia and soffit in dark grey finish
- Timber support post with arised corners
- black upvc gutters rainwater goods
- UPVC windows with inset panel, all in dark grey finish
- Roughsawn tsw vertical boarding
- matching smooth plinth stretcher courses x 2 FFL face brick specials bedded and pointed in natural mortar
- Red FFL face brick bedded and pointed in natural mortar



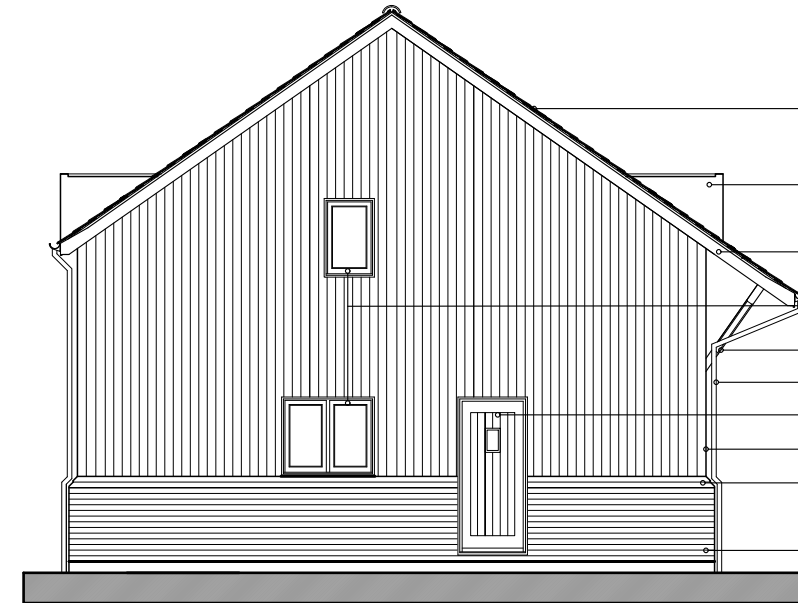
- 42.5 deg clay tile pitched roof with half round ridge tiles, pointed verge, painted timber fascia & soffit
- metal face in dark grey finish to fascia, soffit and dormer cheeks
- Timber fascia and soffit in dark grey finish
- UPVC casement windows in dark grey finish
- black upvc gutters rainwater goods
- UPVC casement windows in dark grey finish
- Roughsawn tsw vertical boarding
- matching smooth plinth stretcher courses x 2 FFL face brick specials bedded and pointed in natural mortar
- Red FFL face brick bedded and pointed in natural mortar

north elevation

east elevation



- inset solar panels
- Conservation type rooflight
- 42.5 deg clay tile pitched roof with half round ridge tiles, pointed verge, painted timber fascia & soffit
- metal face to fascia, soffit and dormer cheeks in dark grey finish
- Timber fascia and soffit in dark grey finish
- UPVC casement windows in dark grey finish
- black upvc gutters rainwater goods
- PPC aluminium bifold doors in dark grey finish
- Roughsawn tsw vertical boarding
- matching smooth plinth stretcher courses x 2 FFL face brick specials bedded and pointed in natural mortar
- Red FFL face brick bedded and pointed in natural mortar



- 42.5 deg clay tile pitched roof with half round ridge tiles, pointed verge, painted timber fascia & soffit
- metal face in dark grey finish to fascia, soffit and dormer cheeks
- Timber fascia and soffit in dark grey finish
- UPVC casement windows in dark grey finish
- Timber support post with arised corners
- black upvc gutters rainwater goods
- UPVC casement windows in dark grey finish
- Roughsawn tsw vertical boarding
- matching smooth plinth stretcher courses x 2 FFL face brick specials bedded and pointed in natural mortar

south elevation

west elevation

B	08.08.23	solar panels added	eos	eos
A	05.07.23	elevations redesigned	eos	eos
rev.	date	details	drawn	check
issued for:				
<b>Information</b>				
project:	Proposed Dwellings		project no:	2210
	Home Barn Place		dwg no:	015
	37 Chalk Lane		rev:	B
drawing:	Proposed elevations		scale:	1:100 @
drawn by:	date:		drawn by:	date:
eos	12.06.23		eos	12.06.23
checked by:	date:		checked by:	date:
eos	12.06.23		eos	12.06.23

proposed elevations 1:100

