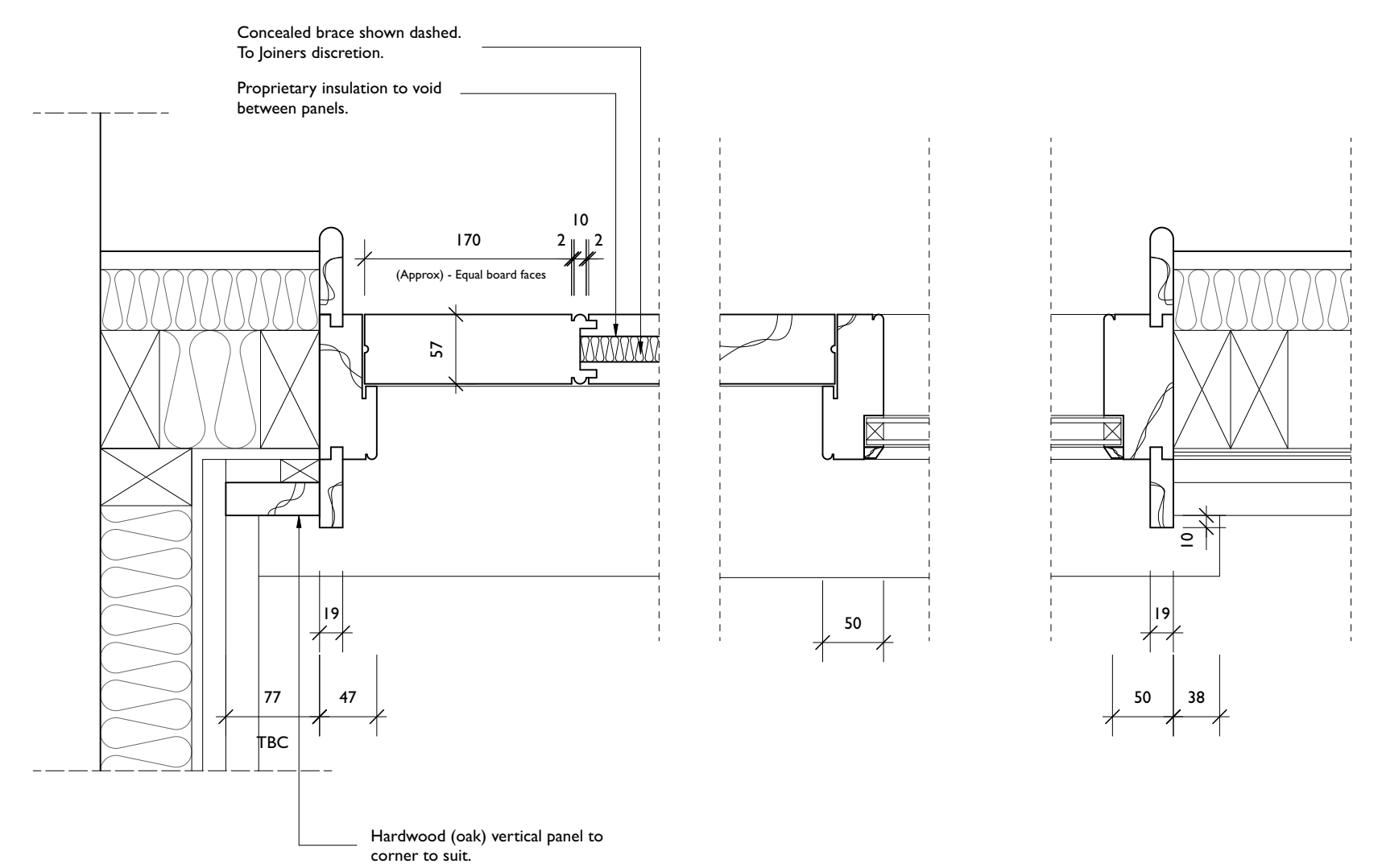
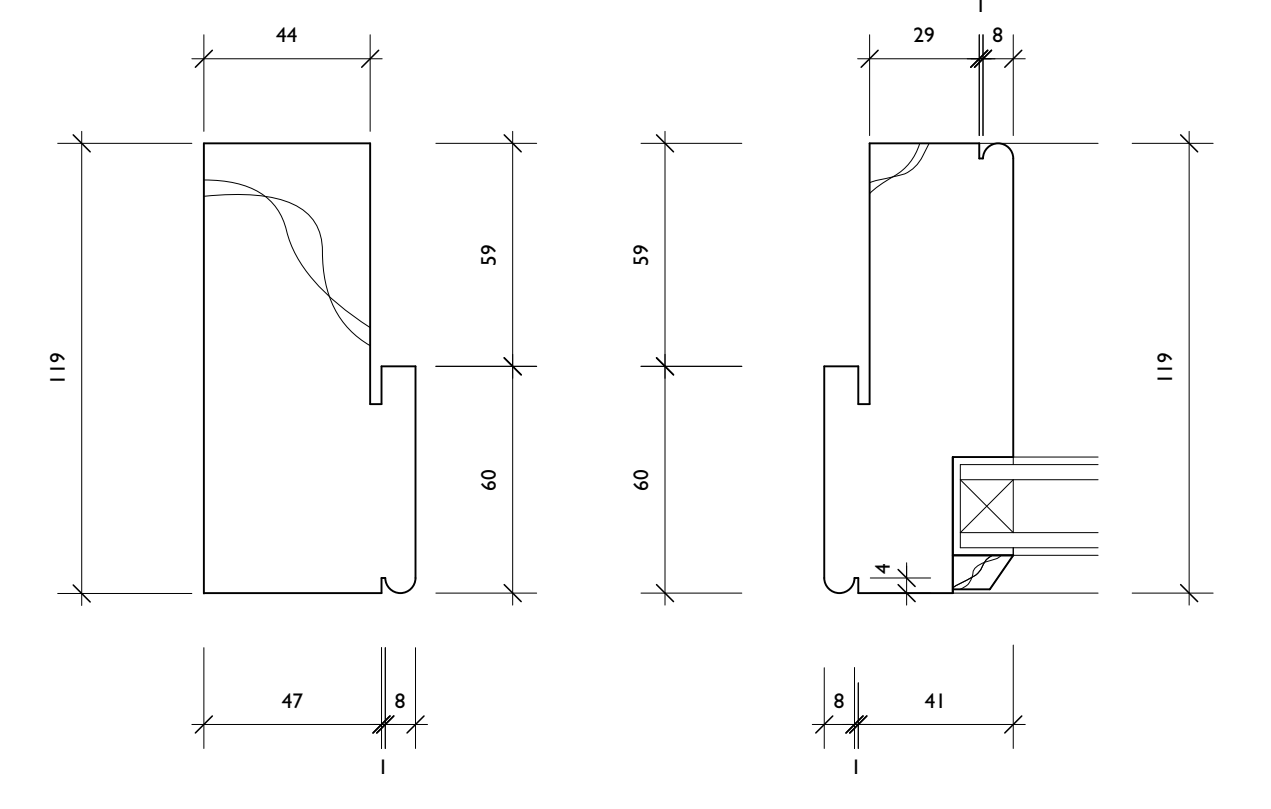
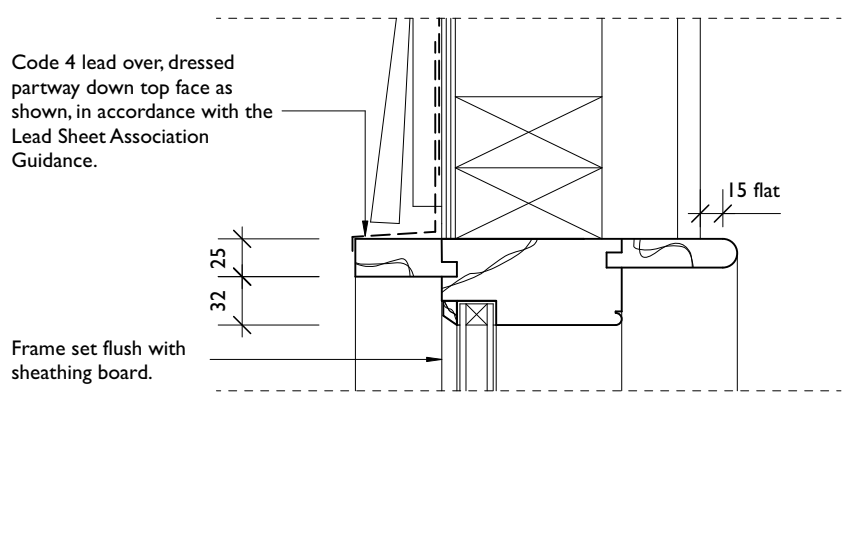
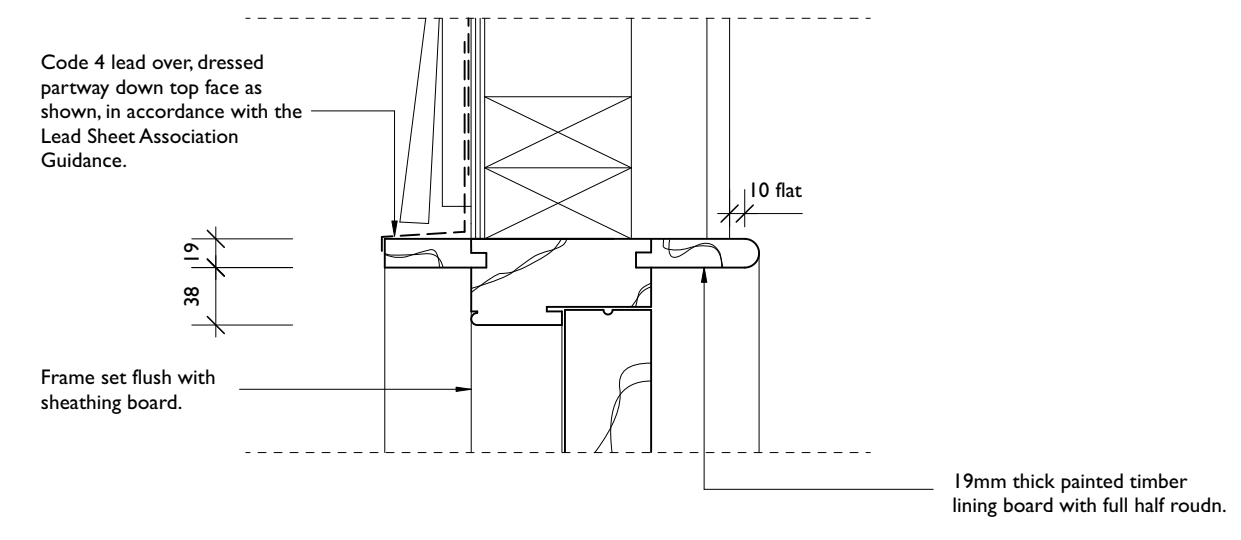
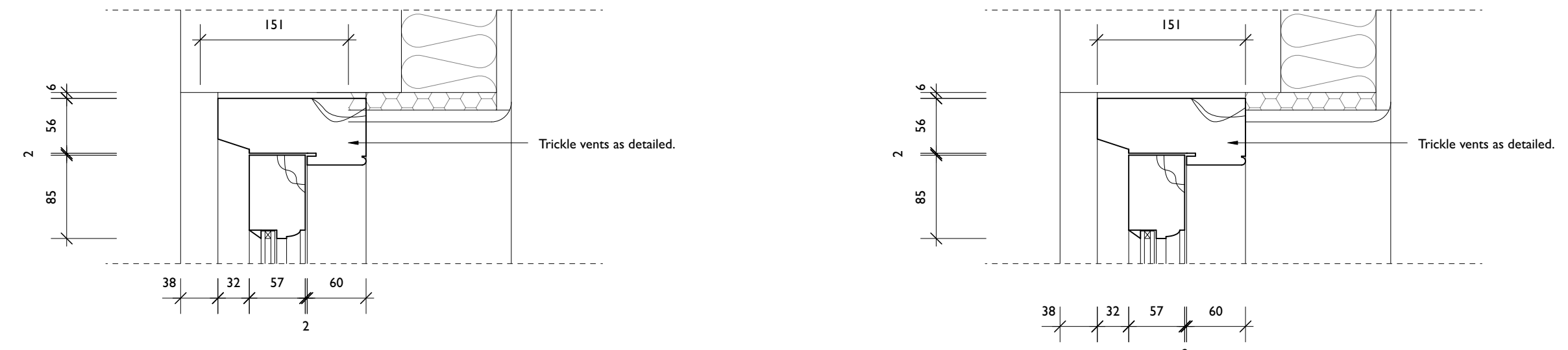


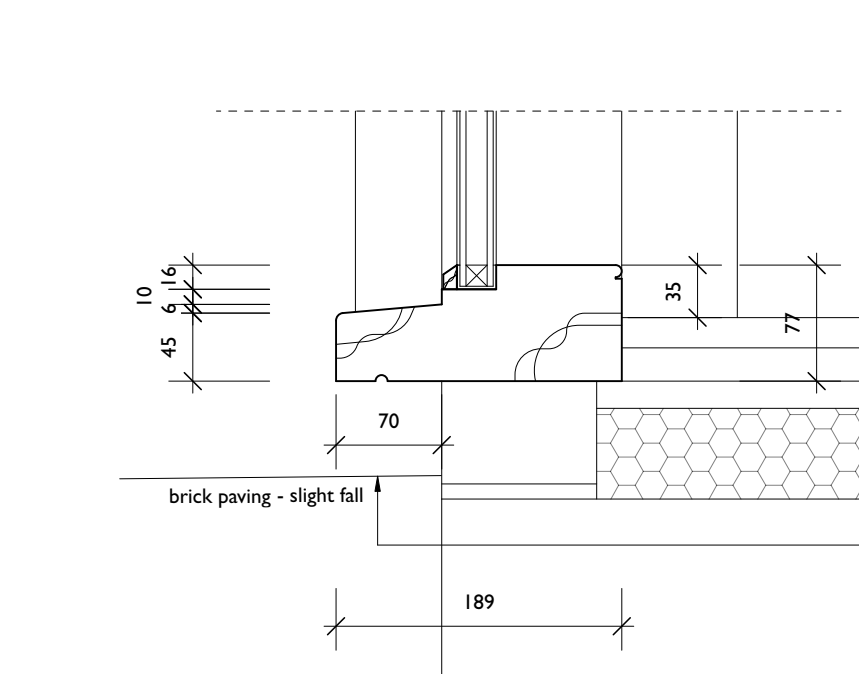
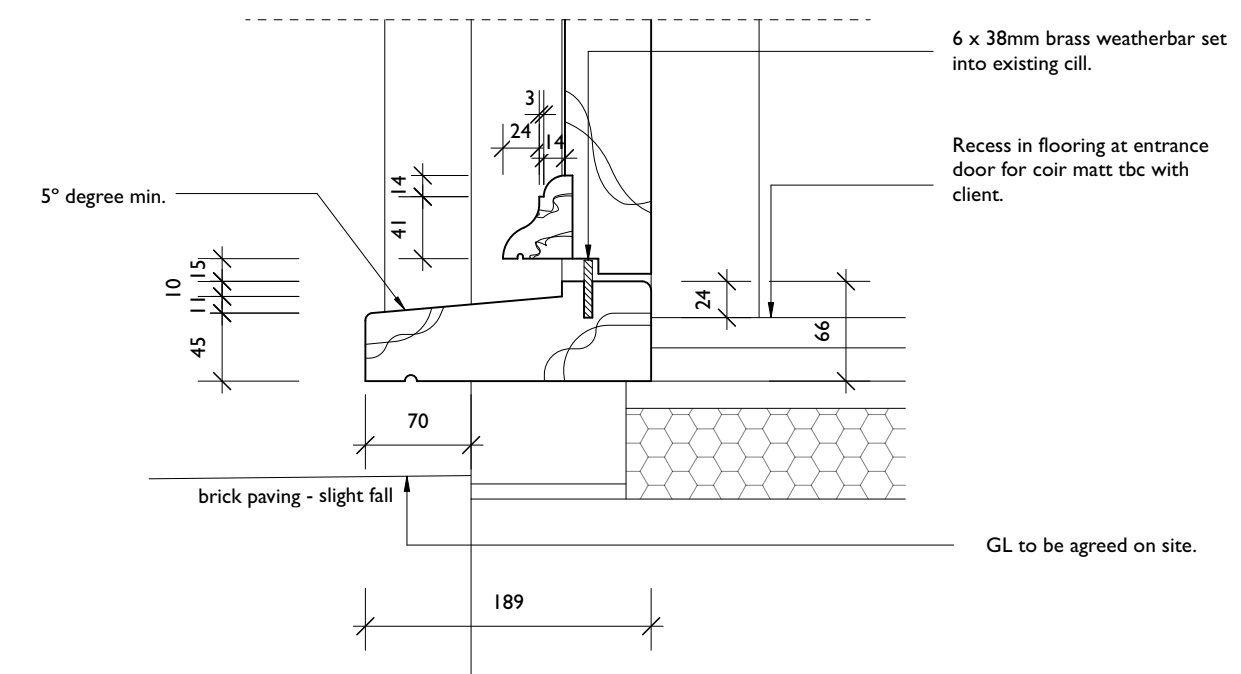
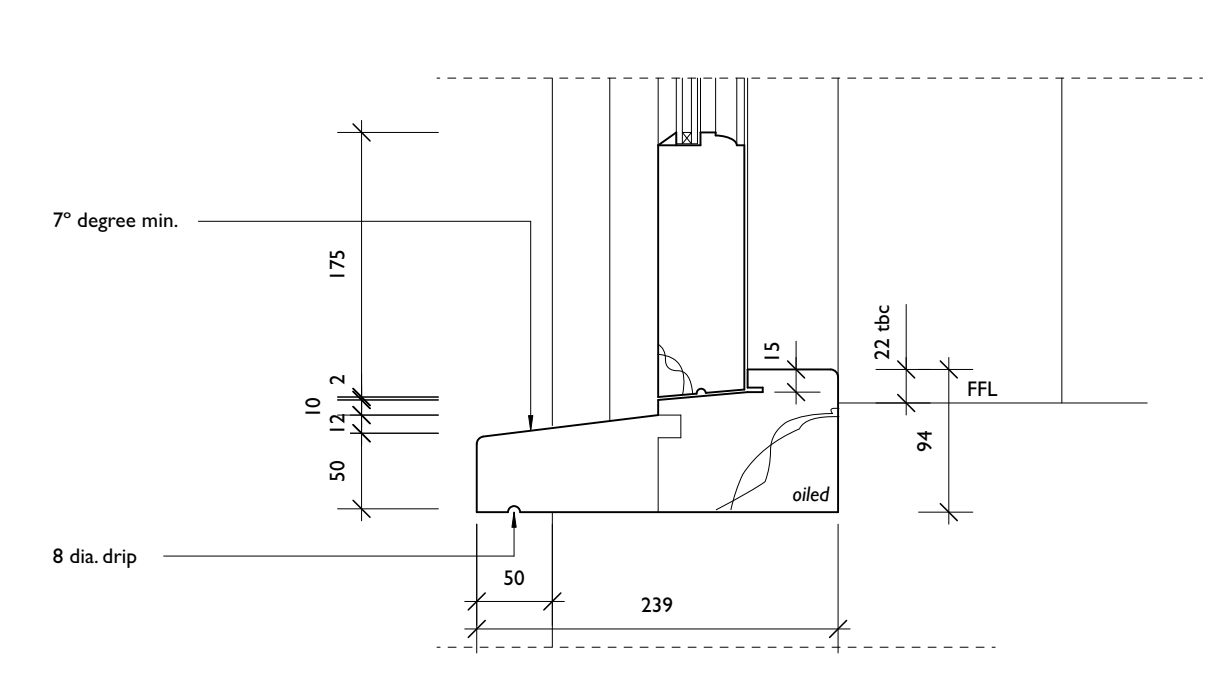
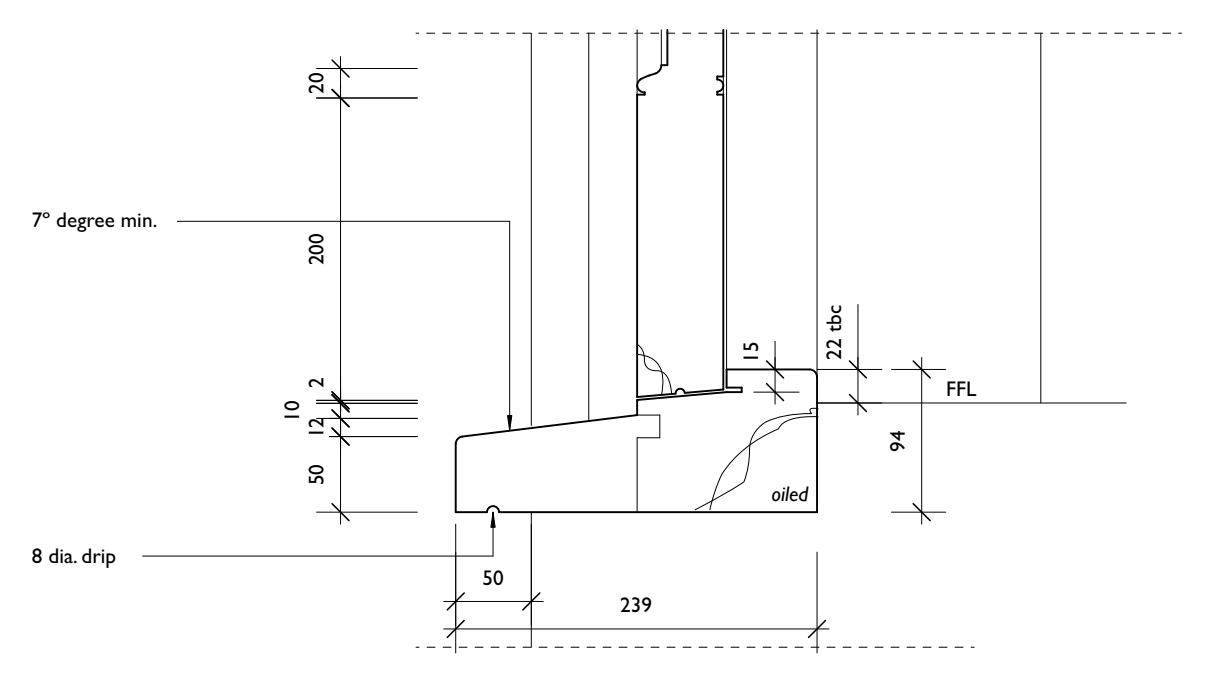
GD1  
 All dimensions to be verified on site prior to fabrication. For costing purposes only.  
 White Aluminium Small/Medium Grill 288mm centered on casements - From the Anvil - Painted in with joinery. Excluding GD1



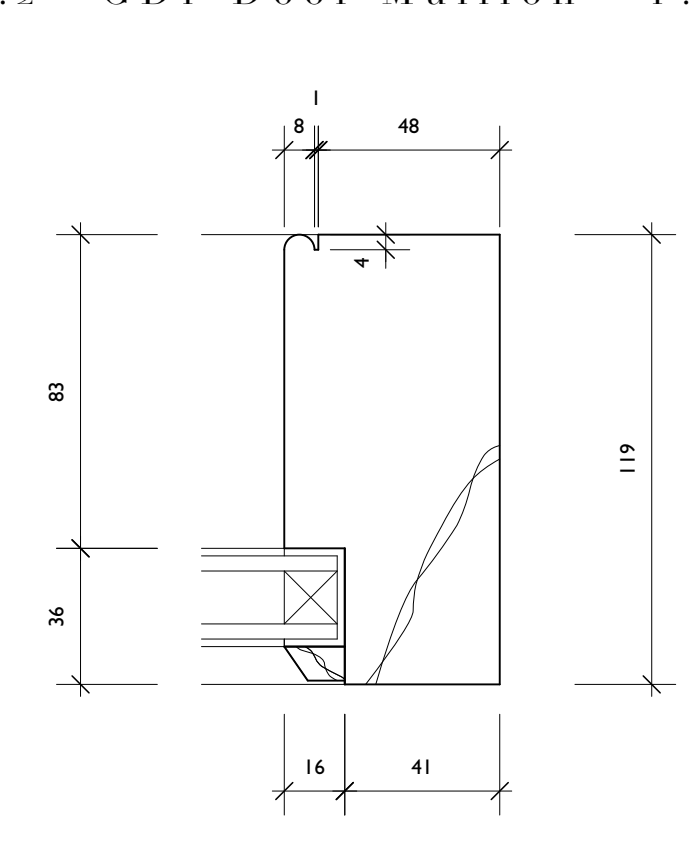
Horizontal Section Through GD1 - 1:5



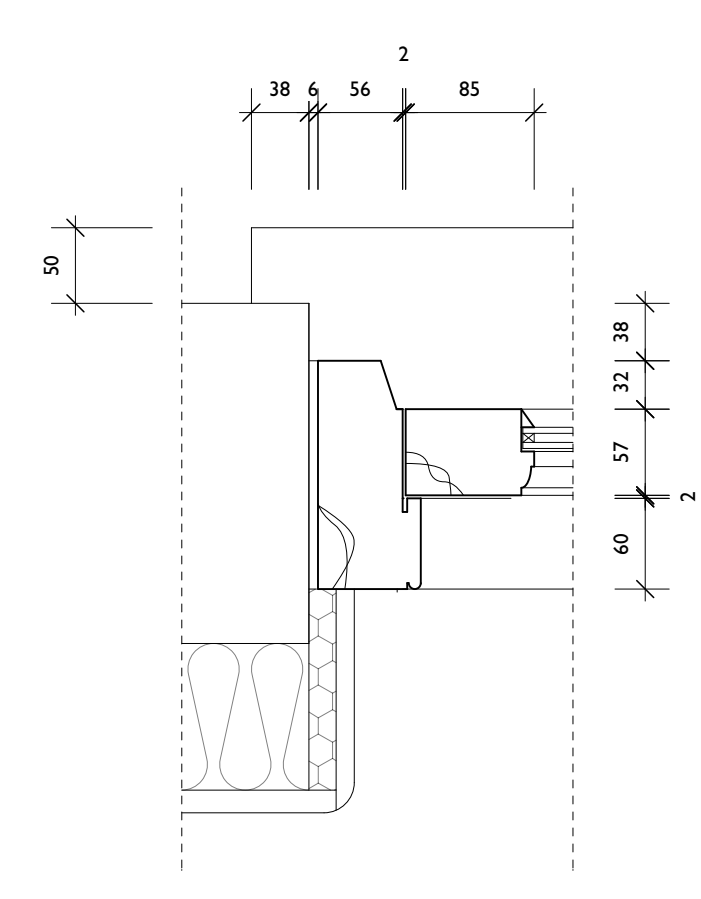
GD1 Door Jamb - 1:2 GD1 Door Mullion - 1:2



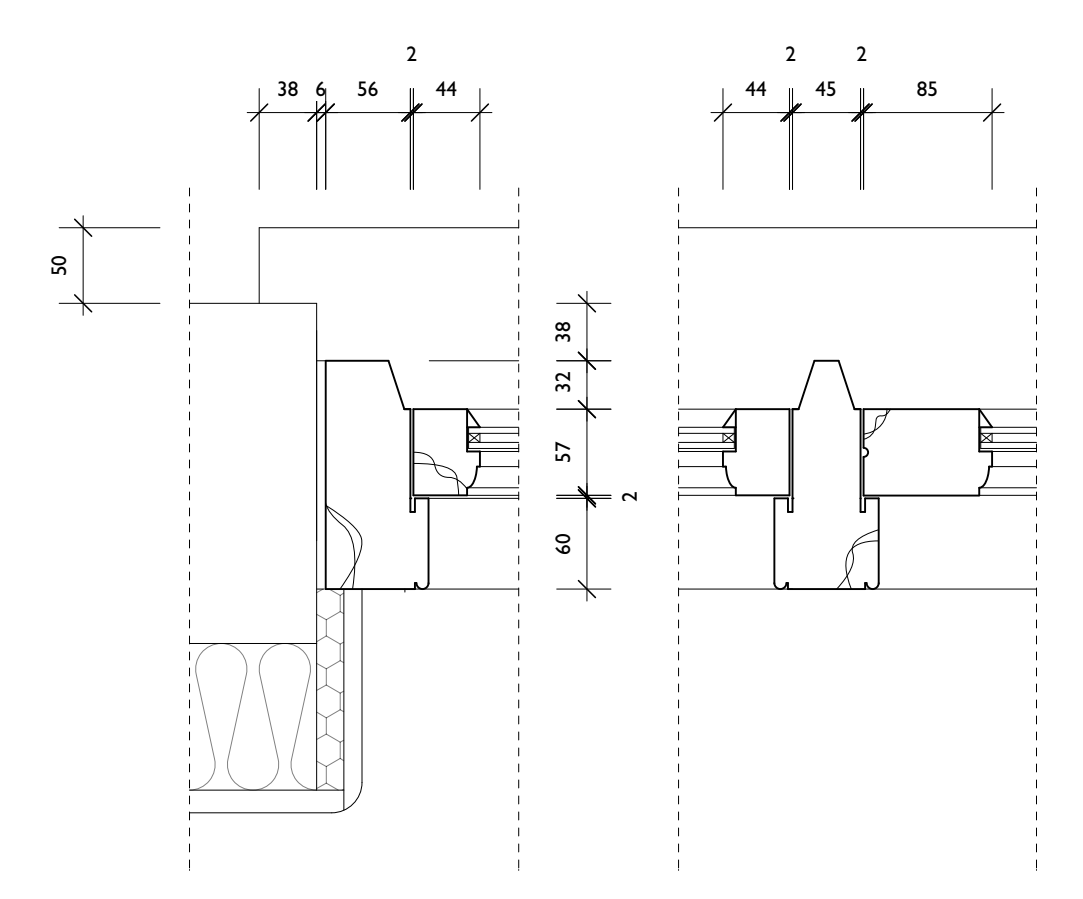
Vertical Section Through Boarded Door - 1:5



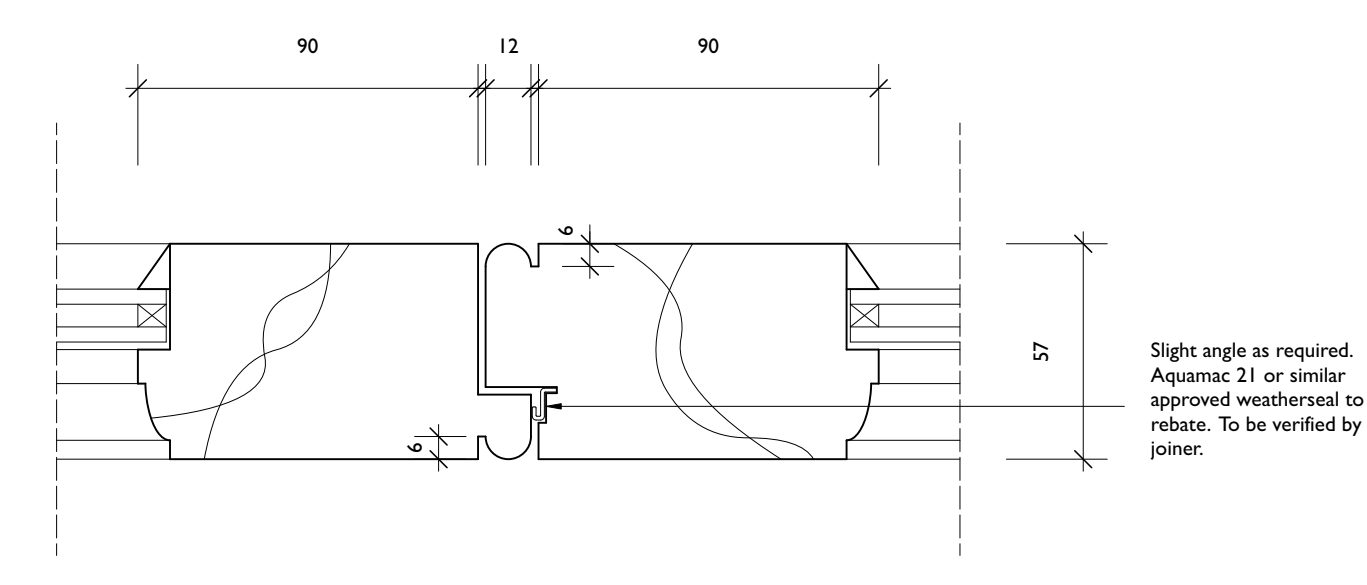
GD1 Fixed Screen - 1:2



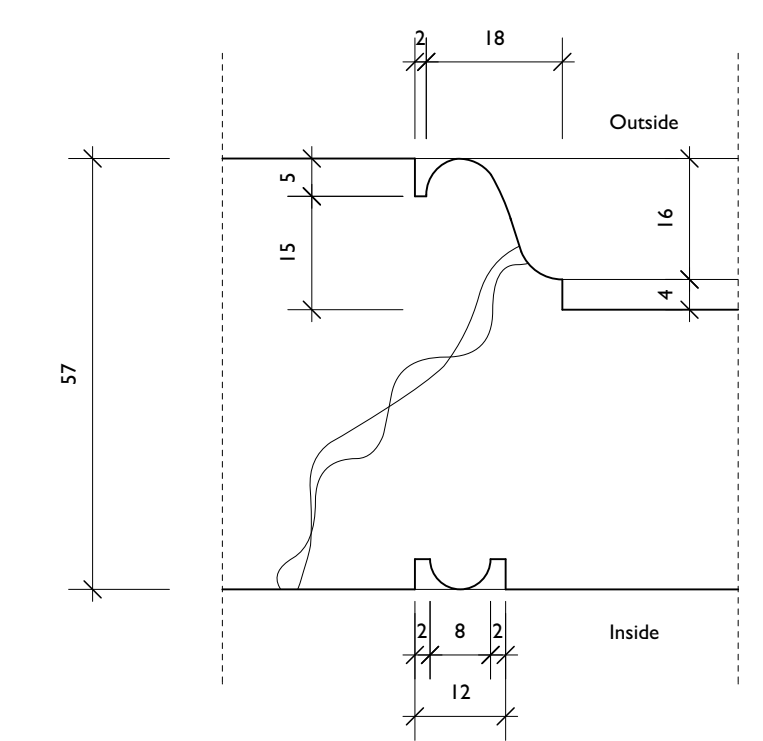
Horizontal Section Through GD2 & GD4 - 1:5



Horizontal Section Through GD3 - 1:5



Rebated Meeting Stile Detail - 1:2  
 (Ironmongery to be confirmed with client / designer prior to fabrication - rebate arrangement tbc. Multi-point/shoot bolt arrangement incorporated to manage door movement in use.)



Lower Panel Detail - 1:1

This drawing to be read strictly in accordance with the General Joinery Notes on drawing no. 3422-15.  
 This drawing to be read strictly in accordance with the General Notes and Residual Risk to Health and Safety Information on drawing no. 3422-11.

**ROGER BALMER DESIGN**

FOUNTAIN HOUSE STUDIO THE STREET EAST BERGHOLT COLCHESTER CO7 6TB  
 Telephone: 01206 299477 Email: enquiries@rogerbalmerdesign.co.uk

Client	Project	Drawing
Mr and Mrs Greene	Holton Hall Hadleigh Road Holton St Mary	Joinery Details Sheet 3
Scale	Date	Del.
As noted at A1	June 2022	BOC
		Drawing no. Rev.
		3422 - 16

Contractors must verify all dimensions and information on site prior to commencement of work. Do not scale from drawing.  
 © Roger A Balmer Ltd