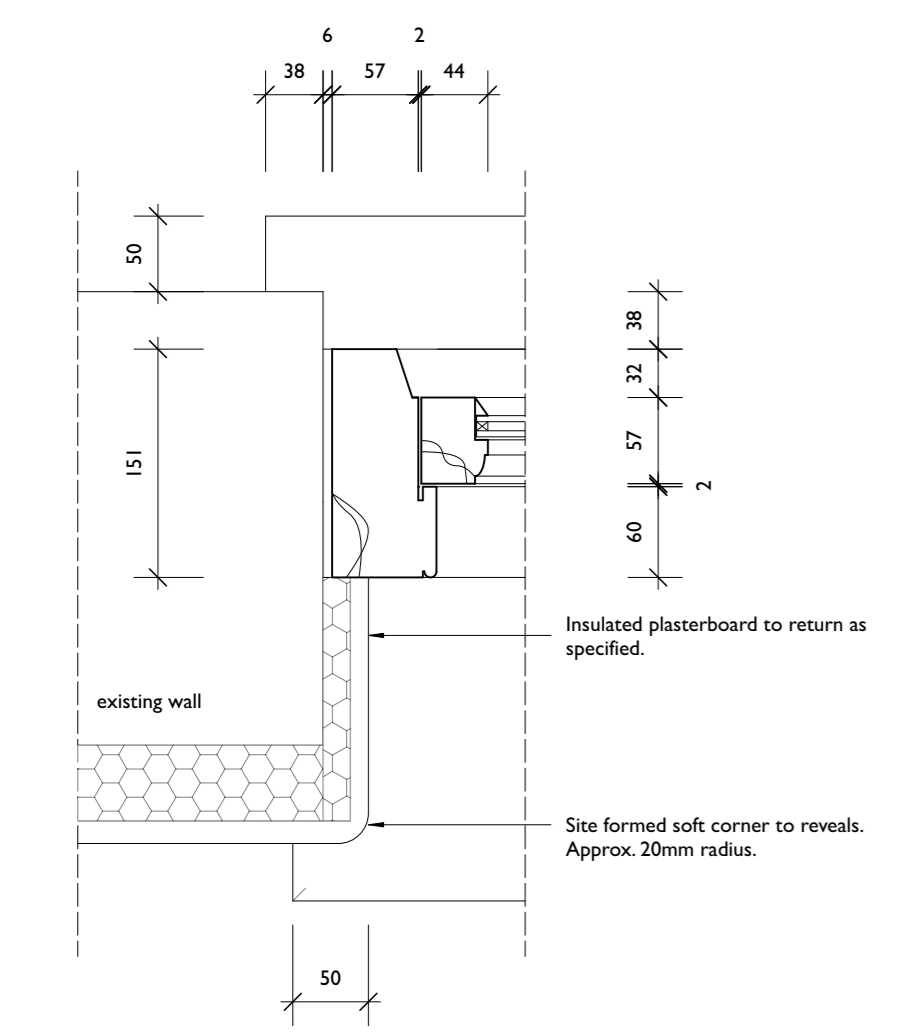
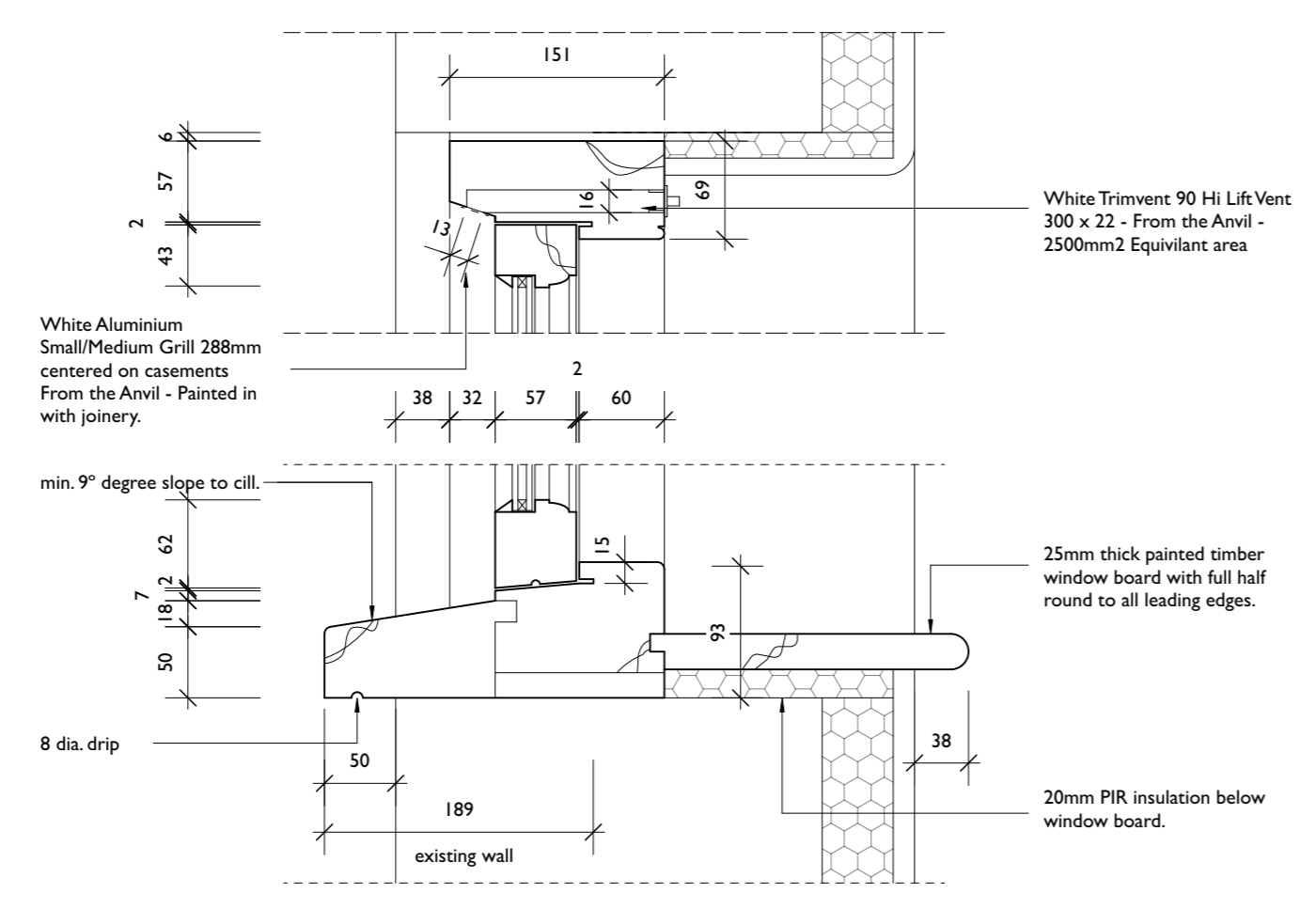


All dimensions to be verified on site prior to fabrication. For costing purposes only.

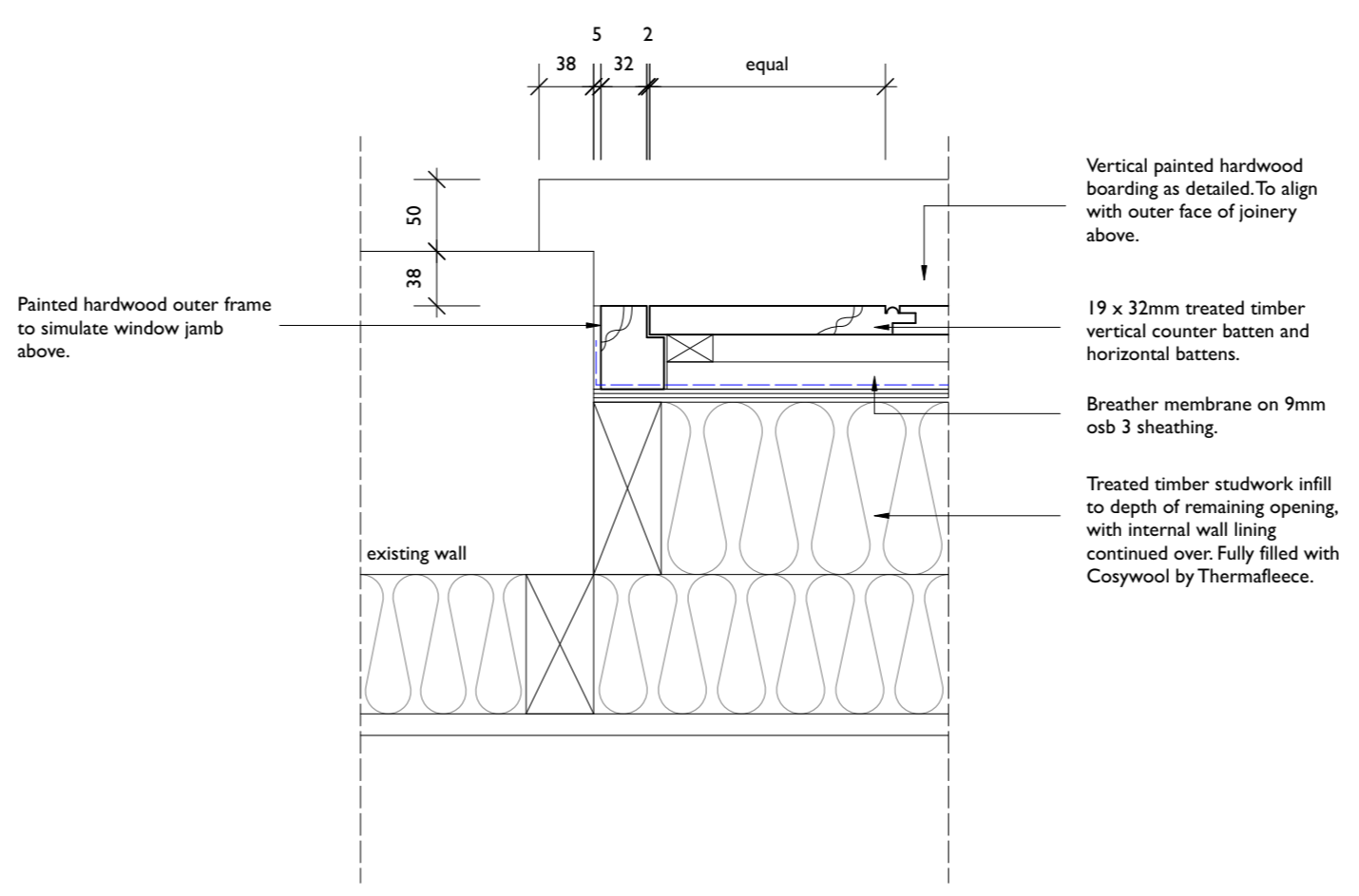
2no. White Aluminium Small/Medium Grill 288mm centered on casements - From the Anvil - Painted in with joinery.



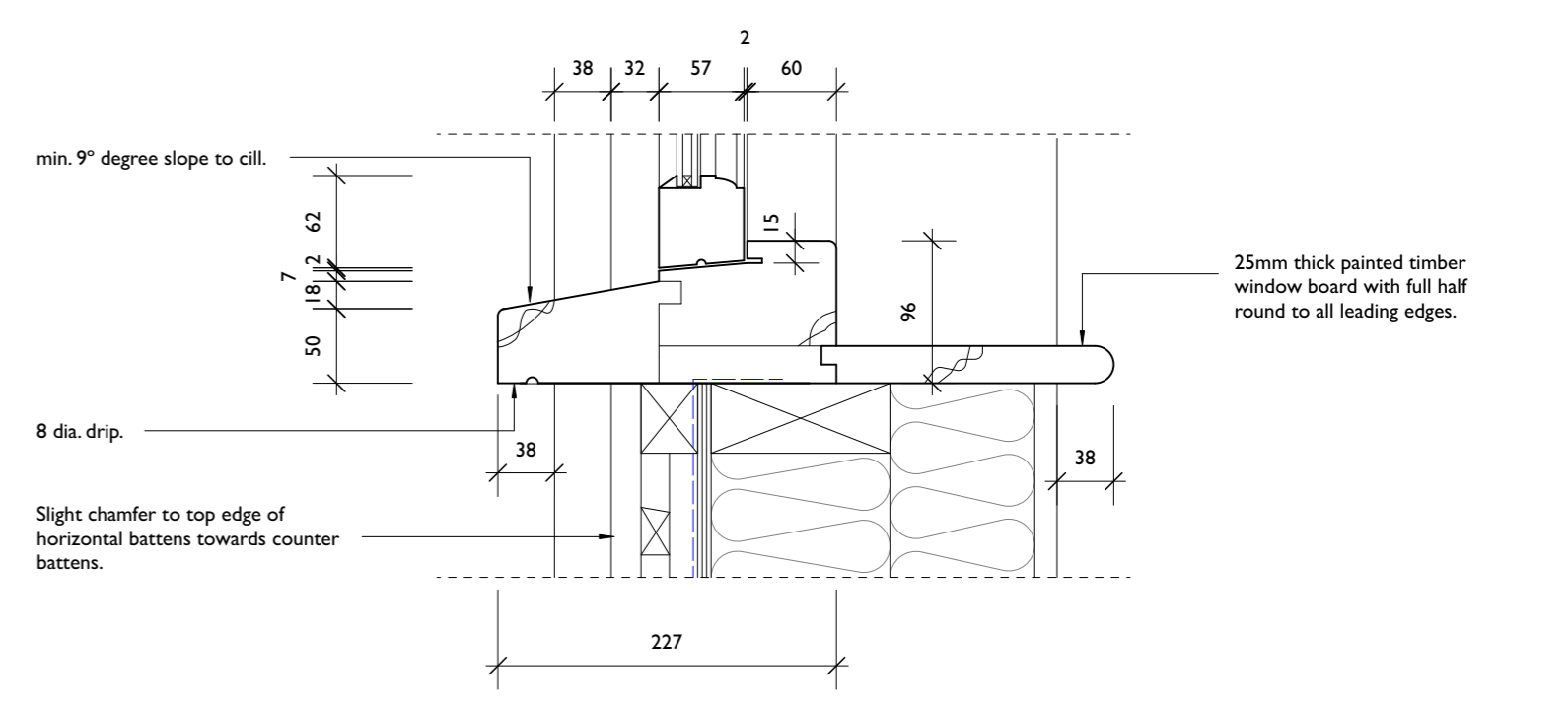
Typical Horizontal Section Through Casement - 1:5



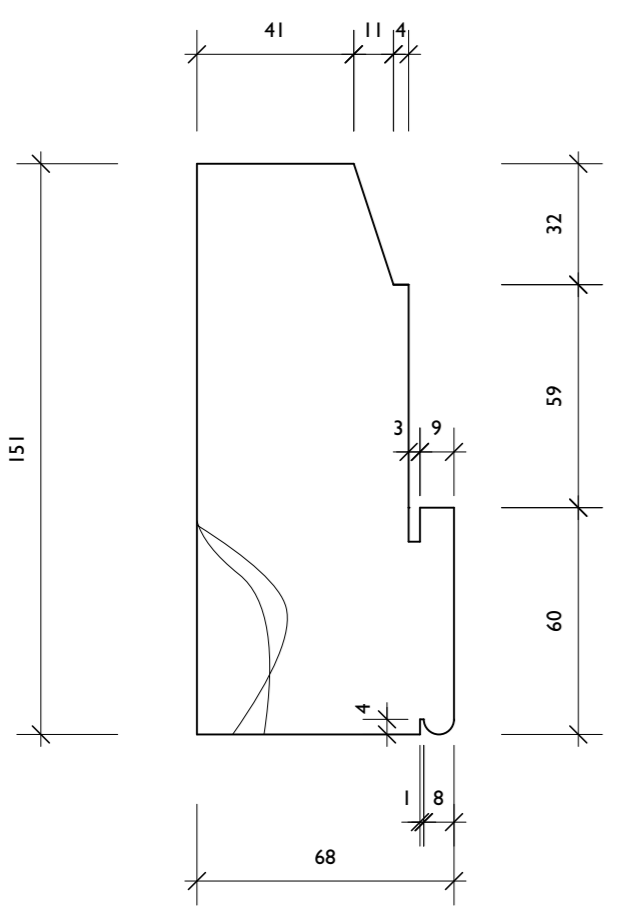
Typical Vertical Section Through Ground Floor Casement - 1:5



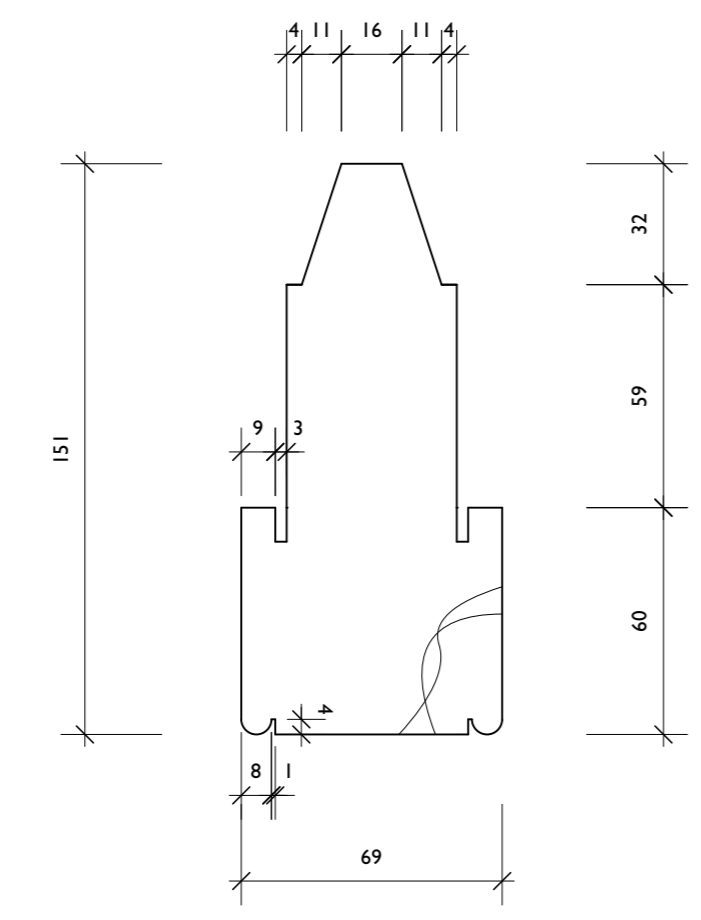
Typical Horizontal Section Through GW7 - 1:5



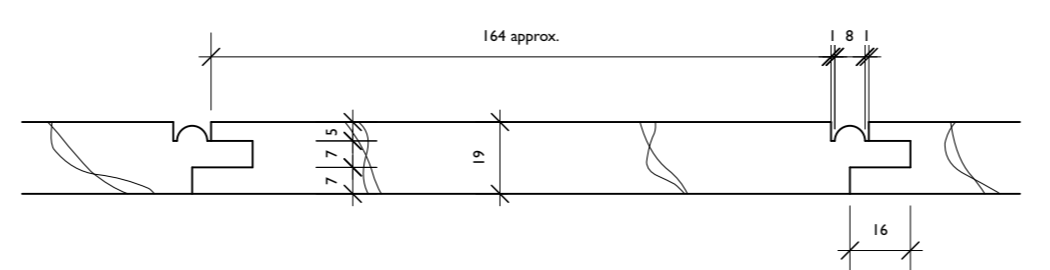
Typical Vertical Section GW7 - 1:5



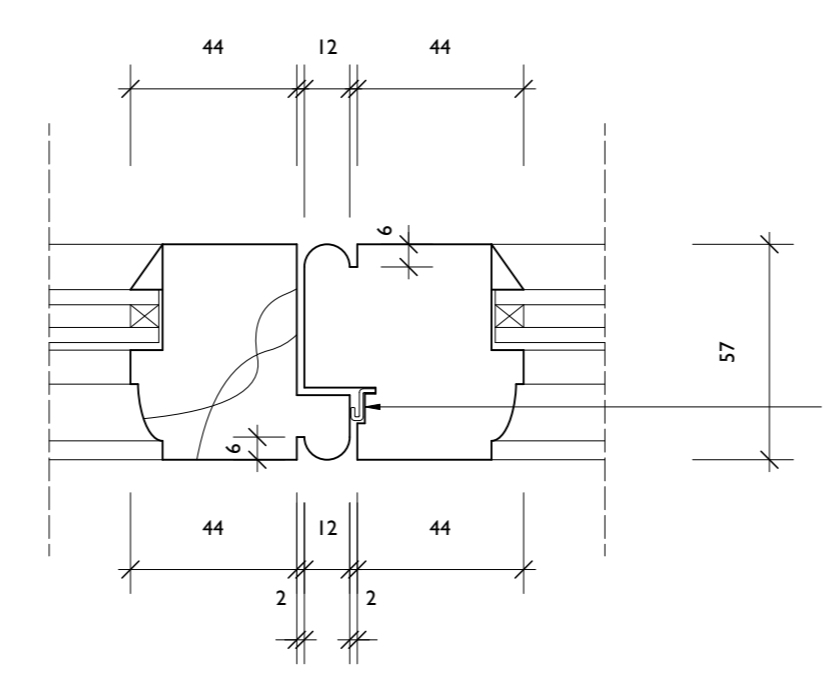
Jamb Detail - 1:2



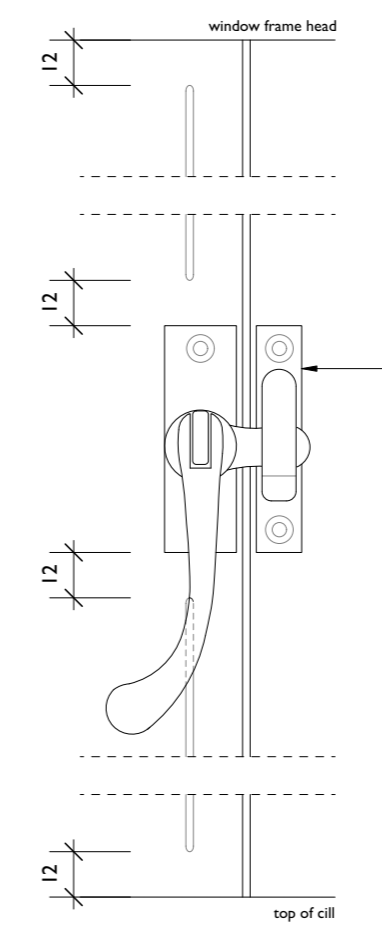
Mullion Detail - 1:2



Typical Boarding Detail - 1:2



Rebated Meeting Stile Detail - 1:2
(Ironmongery to be confirmed with client / designer prior to fabrication - rebate arrangement etc.)



Stop-Groove Detail - 1:2

This drawing to be read strictly in accordance with the General Joinery Notes on drawing no. 3422-15.

This drawing to be read strictly in accordance with the General Notes and Residual Risk to Health and Safety Information on drawing no. 3422-11.

Rev A	Scheme amends	09.01.24	BOC
ROGER BALMER DESIGN			
FOUNTAIN HOUSE STUDIO THE STREET EAST BERGHOLT COLCHESTER CO7 6TB Telephone: 01206 299477 Email: enquiries@rogerbalmerdesign.co.uk			
Client	Project	Drawing	
Mr and Mrs Greene	Holton Hall Hadleigh Road Holton St Mary	Joinery Details Sheet 1	
Scale	Date	Del.	Drawing no. Rev.
As noted at A1	June 2022	BOC	3422 - 14
Contractors must verify all dimensions and information on site prior to commencement of work. Do not scale from drawing. © Roger A Balmer Ltd			