

BURR STREET

S96A NON-MATERIAL AMENDMENT APPLICATION — PROPOSED REVISIONS



PURPOSE OF DOCUMENT

This document has been prepared on behalf of the applicant to illustrate the proposed revisions that are being sought under this S96A non-material amendment application, when compared to the scheme that was previously approved under planning ref: 22/00807/MMAMD

GROUND FLOOR REVISIONS

Block A

Block A remains unchanged

Block B

B1: Second stairs to be added along with new external escape door on west elevation. Unit B_00_03 to be changed from 1B2P to 1B1P unit.

Block C

C1: Second stairs to be added along with new external escape door on east elevation. Unit C_00_02 to be changed from 2B3P to 1B2P unit.

C2: New external escape door to be added beside main entrance on south elevation.

Block D

D1: Second Stairs to be added along with new external escape door on east elevation. Unit D_00_09 changed from 1B2P to 1B1P unit.



REVISED GROUND FLOOR PLAN



PREVIOUSLY APPROVED GROUND FLOOR PLAN

1st—7th FLOOR REVISIONS

Block A

Block A remains unchanged

Block B

B1: Lift / Stair core revised for the addition of second stairs. Minor change in floor areas of the 4 x 1B1B units surrounding the core.

Block C

C1: Lift / Stair core revised for the addition of second stairs. Minor change in floor areas of the 2 x 1B1B units on either side of the core

C2: Positions of 1B2P and 1B1P units swapped, with associated minor amendments to window positions on south elevation.

Block D

D1: Lift / Stair core revised for the addition of second stairs. Minor change in floor areas of the 2 x 1B1B units on either side of the core

D2: Positions of 1B2P and 1B1P units swapped, with associated minor amendments to window positions on north elevation.



REVISED 1st FLOOR PLAN

The same amendments apply on 2nd—7th floors



PREVIOUSLY APPROVED 1st FLOOR PLAN

8th — 9th FLOOR REVISIONS

Block B

B1: Roof plant enclosure relocated slightly.

Block C

C1: Lift / Stair core revised for the addition of second stairs. Minor change in floor areas of the 1B1B unit beside the core

Block D

D1: Lift / Stair core revised for the addition of second stairs. Minor change in floor areas of the 2 x 1B1B units on either side of the core

D2: Positions of 1B2P and 1B1P units swapped, with associated minor amendments to window positions on north elevation.



REVISED 8th FLOOR PLAN

The same amendments apply on 9th floor

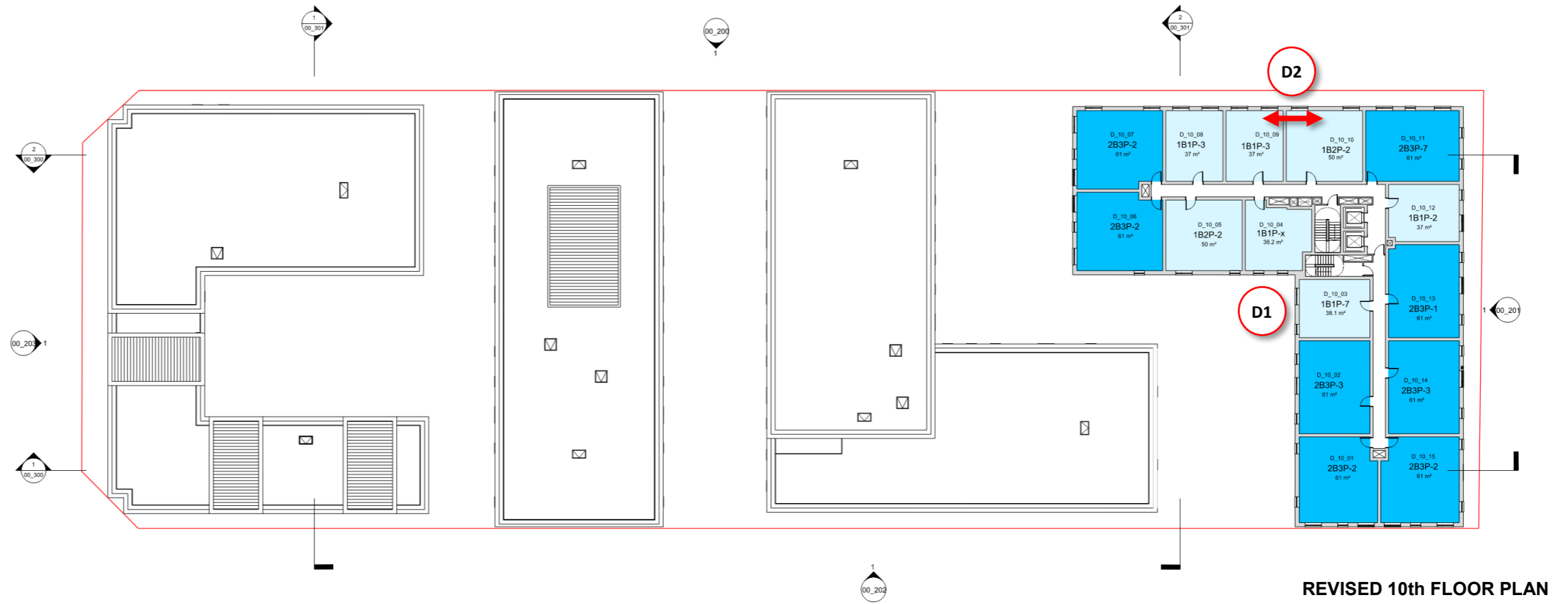


PREVIOUSLY APPROVED 8th FLOOR PLAN

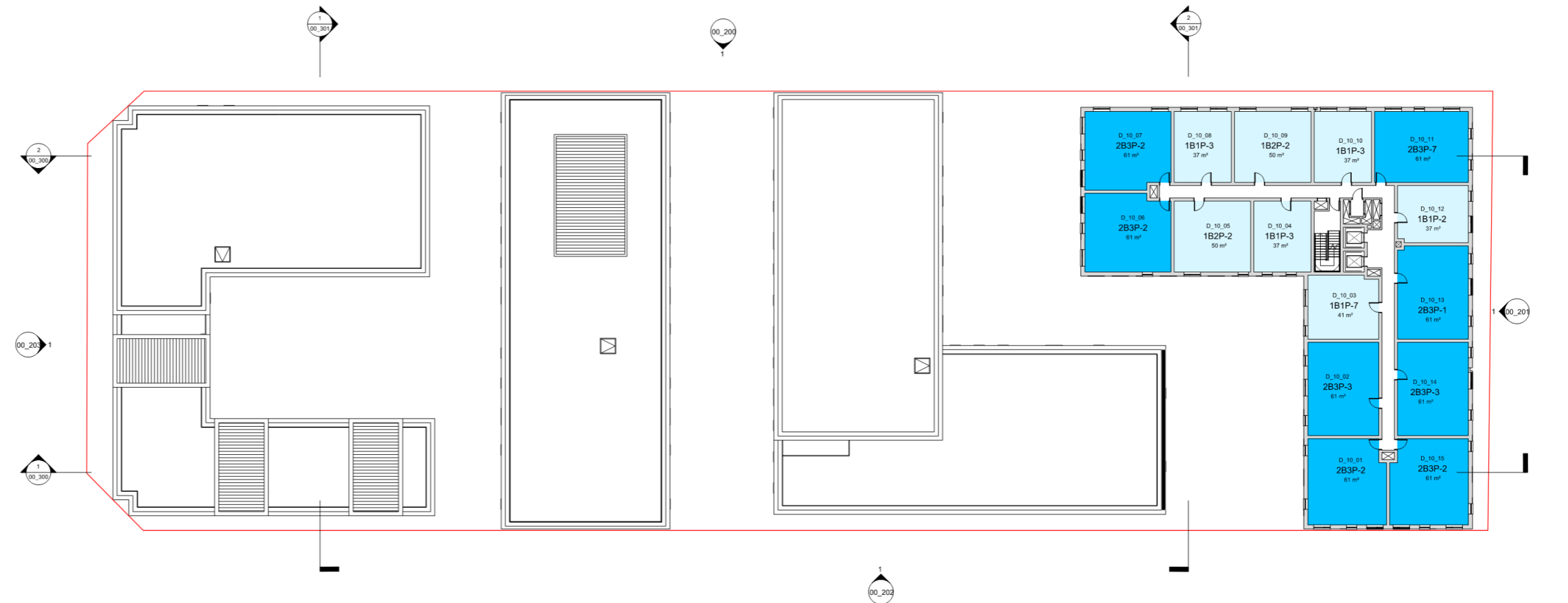
10th FLOOR REVISIONS

Block D

D1: Lift / Stair core revised for the addition of second stairs. Minor change in floor areas of the 2 x 1B1B units on either side of the core
D2: Positions of 1B2P and 1B1P units swapped, with associated minor amendments to window positions on north elevation.



REVISED 10th FLOOR PLAN



PREVIOUSLY APPROVED 10th FLOOR PLAN

REVISIONS TO NORTH ELEVATION

Block D

D1: Minor amendment to window positions to facilitate positions of 1B2P and 1B1P units being swapped.



REVISED NORTH ELEVATION

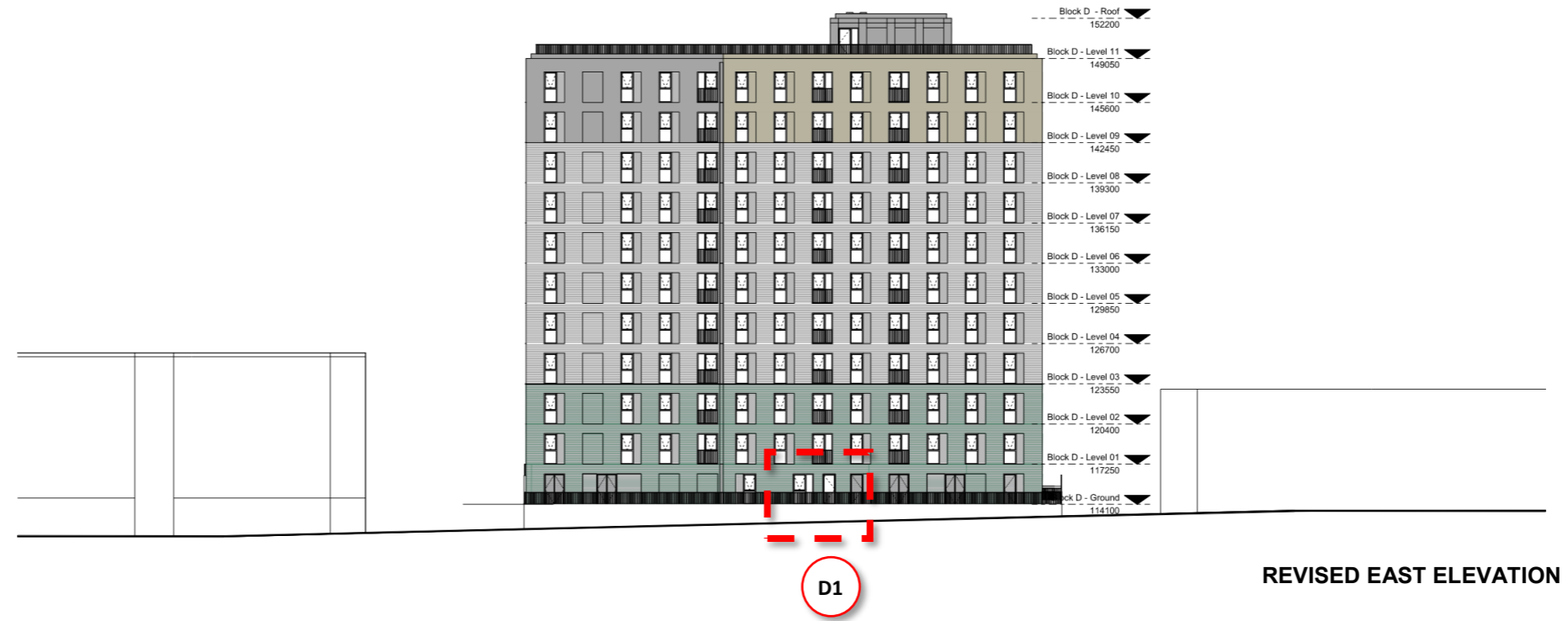


PREVIOUSLY APPROVED NORTH ELEVATION

REVISIONS TO EAST ELEVATION

Block D

D1: New external escape door added to serve second staircase.



REVISIONS TO SOUTH ELEVATION

Block C

C1: New external escape door added to serve firefighting stair.

C2: Minor amendment to window positions to facilitate positions of 1B2P and 1B1P units being swapped.



REVISED SOUTH ELEVATION



PREVIOUSLY APPROVED SOUTH ELEVATION