

**BAY STUDIES:**

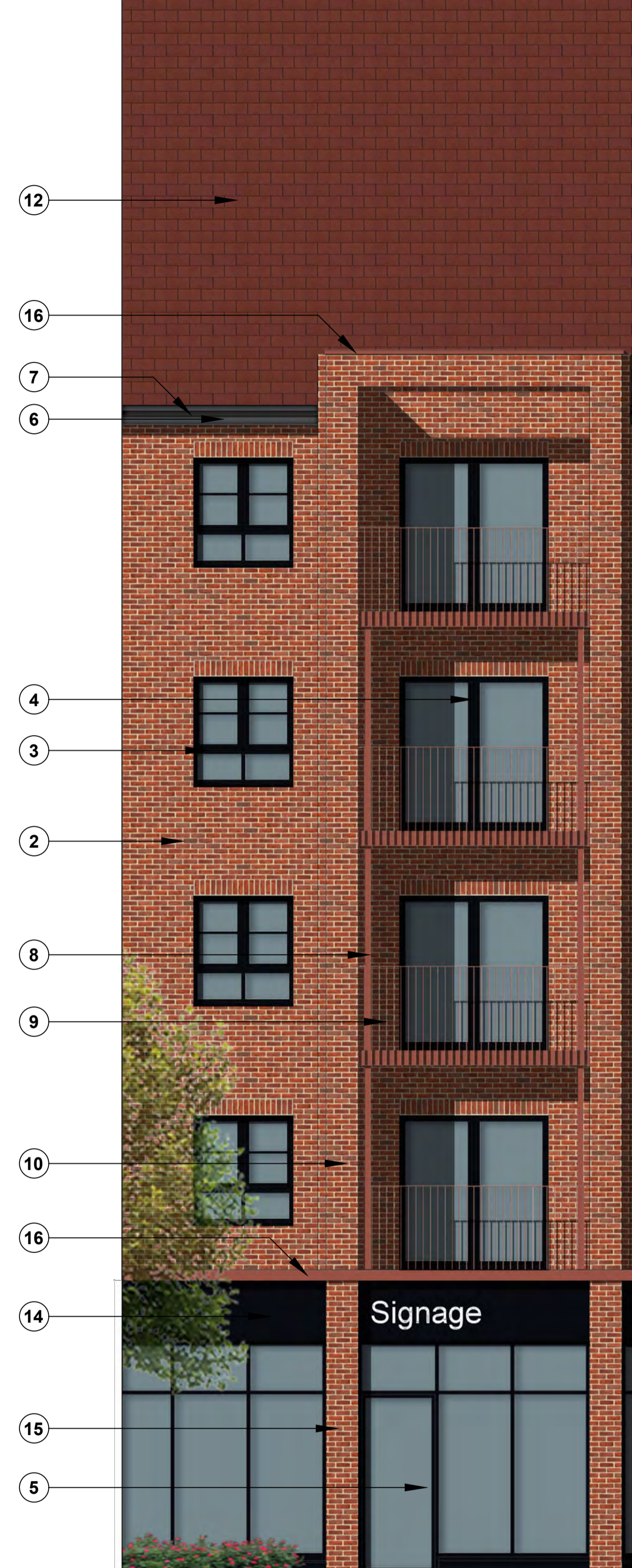
Refer to Design and Access Statement (January 2023, Revision P4) prepared by PRP Architects, in section 6, pages 61-78 for details of Context Analysis and Development of the Architectural Language Strategy.



**BAY STUDY: Blocks B & C**



**BAY STUDY: Blocks A, D & E**

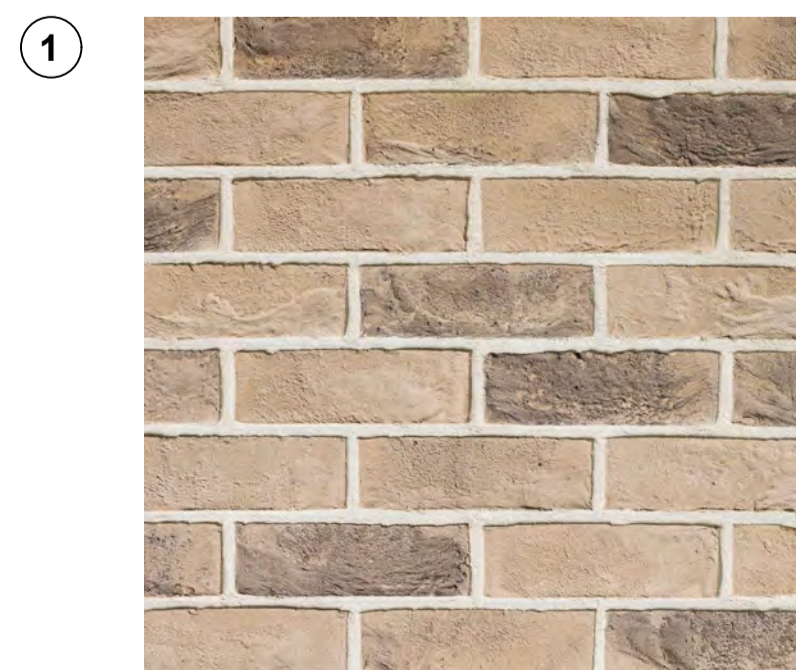


**BAY STUDY: Block F**

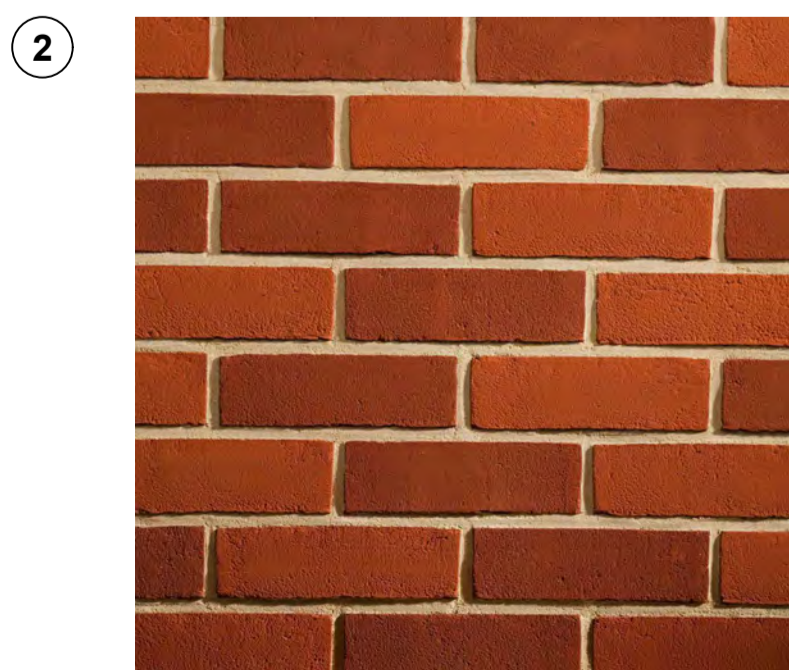
**Key**

Refer to Drawings Ref. TFR-PRP-AB-ZZ-DR-A-20200 P2 (Blocks A & B), Ref. TFR-PRP-CD-ZZ-DR-A-20201 P2 (Blocks C & D) and Ref. TFR-PRP-EF-ZZ\_DR-A-20202 P2 (Blocks E & F) for the approved elevations

- ① Buff/Grey Facing Brick, Traditional Brick & Stone St. Andrews Multi, laid in stretcher bond with Natural mortar
- ② Red Facing Brick, Traditional Brick & Stone Waveney Red Blend, laid in stretcher bond with Natural mortar
- ③ Residential Units: Double Glazed PVCu windows, Colour Black (RAL 9005)
- ④ Residential Units: Double Glazed PVCu doors, Colour Black (RAL 9005)
- (Not Shown) Communal Lobby: Double Glazed Aluminium doors, Colour Black (RAL 9005)
- ⑤ Commercial Unit: Double Glazed Aluminium Curtain Wall glazing, Colour Black (RAL 9005)
- ⑥ PVCu Fascia & Soffit Boards, Colour Black (RAL 9005)
- ⑦ Half Round PVCu gutters and circular downpipes, Colour Black (RAL 9005)
- ⑧ Steel Balcony Structure, Colour Henna Red (RAL 040 40 50)
- ⑨ Steel Vertical Bar Balustrade and Rail, Colour Henna Red (RAL 040 40 50)
- ⑩ Feature Balcony Surround: Traditional Brick & Stone Waveney Red Blend, laid in stretcher bond with Natural mortar, See Drawing Ref. WH208\_23\_P\_30.02 for Details
- ⑪ Crest 'Planum' interlocking concrete roof tiles, Colour Anthracite Grey
- ⑫ Crest 'Double Pantile' interlocking concrete roof tiles, Colour Cayenne Red
- (Not Shown) Rooflights, Velux Standard, Colour Black (RAL 9005)
- ⑬ Dormer: StormKing FT35 1352 x 1210mm, Flat Top Dormer Window Roof, Colour RAL 9005, See Drawing Ref. WH208\_23\_P\_30.02 for Details
- ⑭ Commercial Unit Fascia, PPC Aluminium Panel (part of curtain walling system), Colour Black (RAL 9005)
- ⑮ Commercial Unit Vertical Piers, Facing Brick to match main facade above (Waveney Red Blend)
- ⑯ Aluminium Powder Coated Coping, Colour Henna Red (RAL 040 40 50)



① Buff/Grey Facing Brick, Traditional Brick & Stone St. Andrews Multi, laid in stretcher bond with Natural mortar



② Red Facing Brick, Traditional Brick & Stone Waveney Red Blend, laid in stretcher bond with Natural mortar



⑪ Crest 'Planum' interlocking concrete roof tiles, Colour Anthracite Grey



⑫ Crest 'Double Pantile' interlocking concrete roof tiles, Colour Cayenne Red

**Notes:**

Rev	Drawn	Checked
C	JM	MS

Amendment to Block F Commercial unit glazing & signage.

**PLANNING**

**Title**  
External Facing Materials

**Site**  
Gasholder Site, Tayfen Rd, B-s-E

**Date**  
April 23

**Scale**  
1:50@A1 / 1:100@A3

**Drawing No.**  
WH208\_23\_P\_30.01

**Rev**  
C

**Weston Homes**

**General Notes**  
This drawing is the property of Weston Homes Plc and is issued on the condition that it is not reproduced, disclosed or copied to any unauthorized person without written consent. Levels are in AOD unless otherwise stated. Dimensions are in millimeters unless otherwise stated. Weston Homes Plc must be informed of any drawing errors immediately in writing. This drawing is for planning purposes only.

© WESTON HOMES PLC

**Head Office**  
Weston Group Business Centre,  
Parkway Road, Talvey, Essex,  
CM20 8PU  
T: 0203 873353  
www.weston-homes.com | email: info@weston-homes.com

**London Office**  
10 Portman Square,  
London, W1H 6AZ  
T: 0203 096 7208