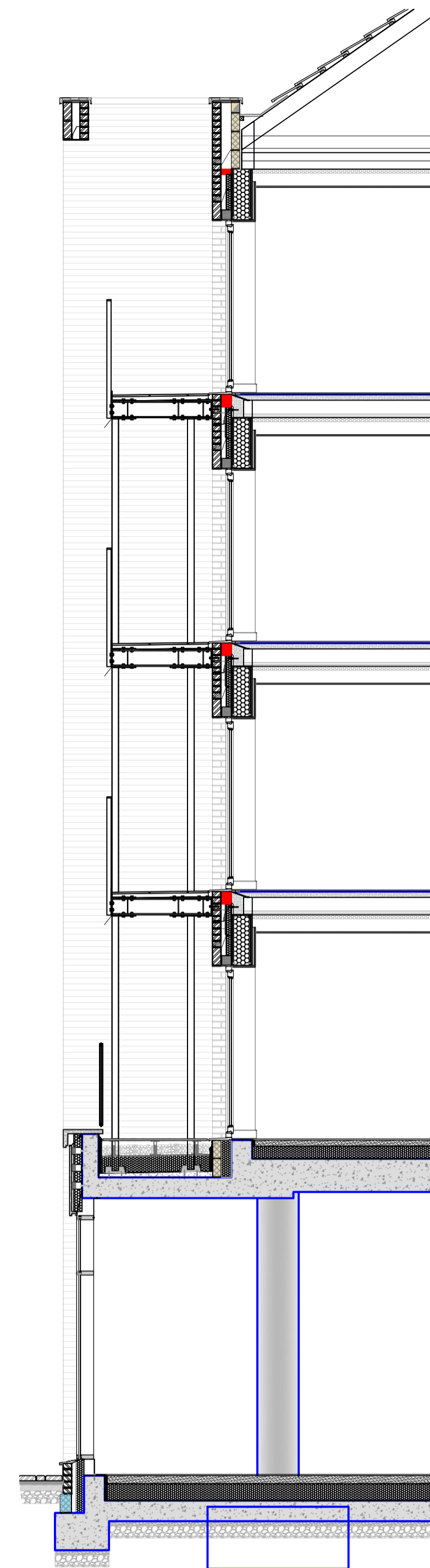
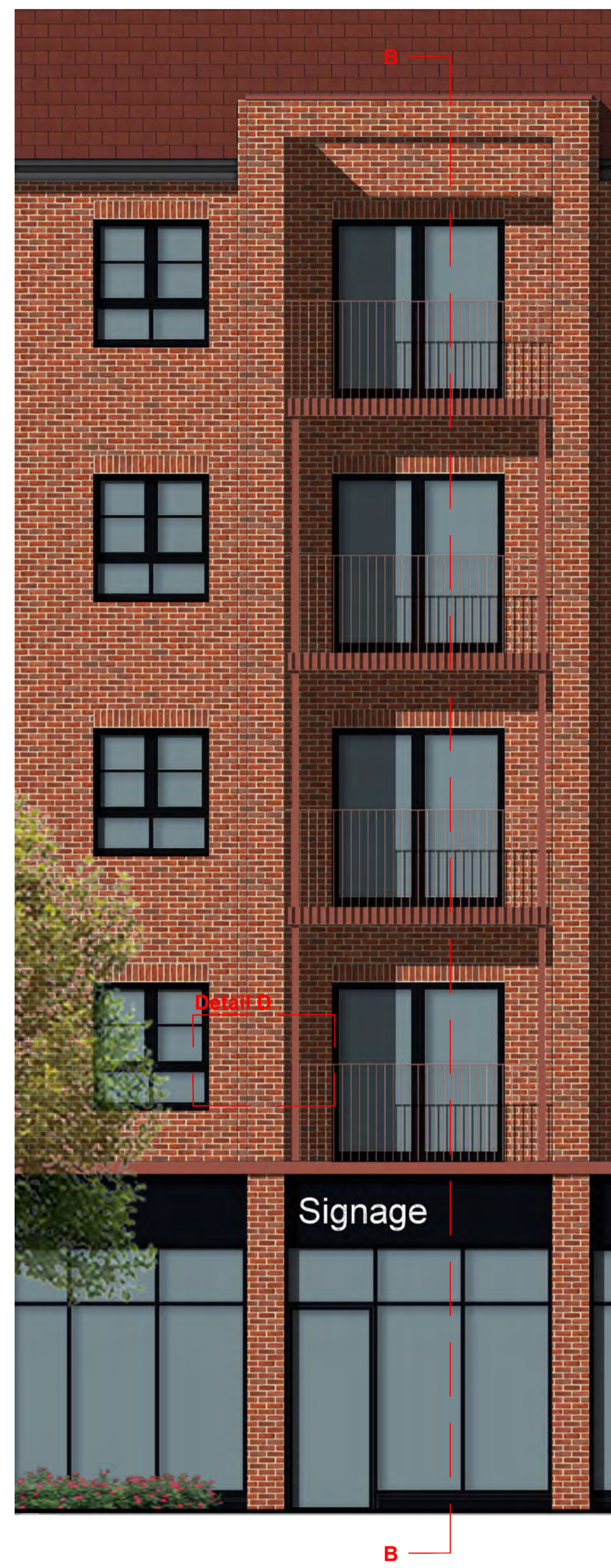


BAY STUDY EXTRACT: Blocks A, D & E

Section AA

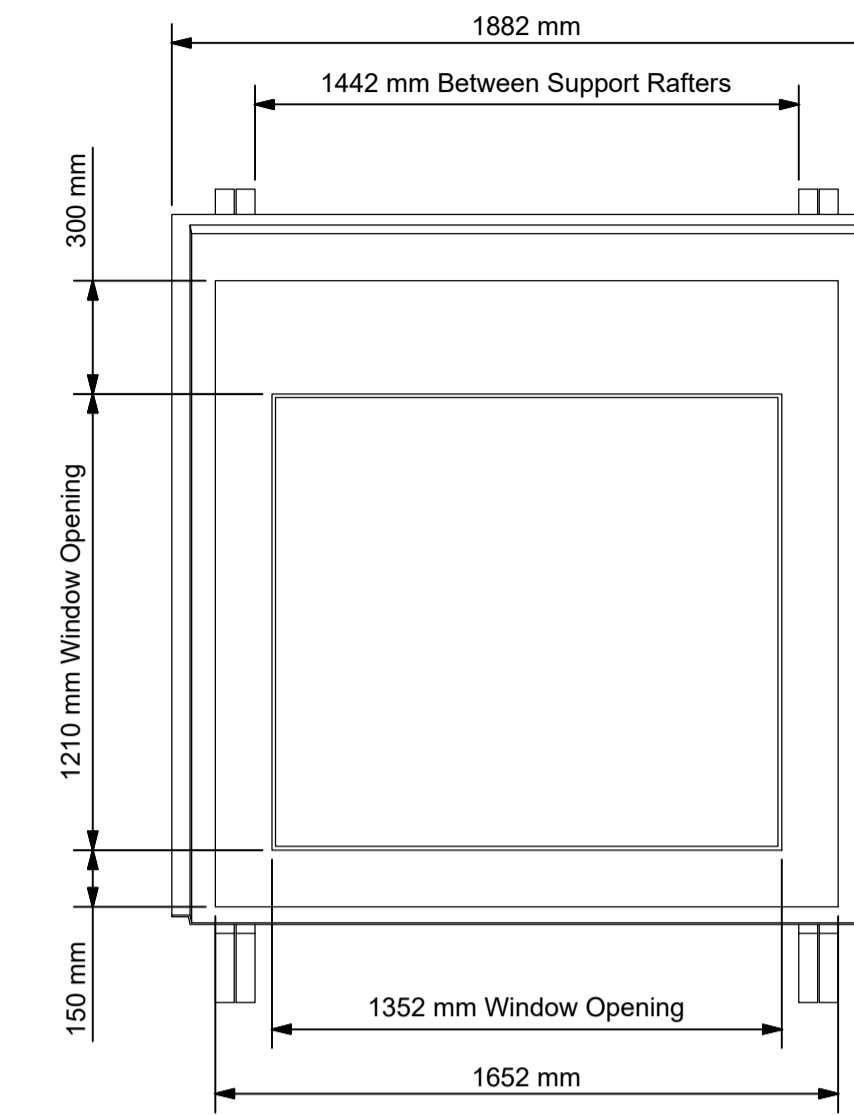


BAY STUDY EXTRACT: Block F

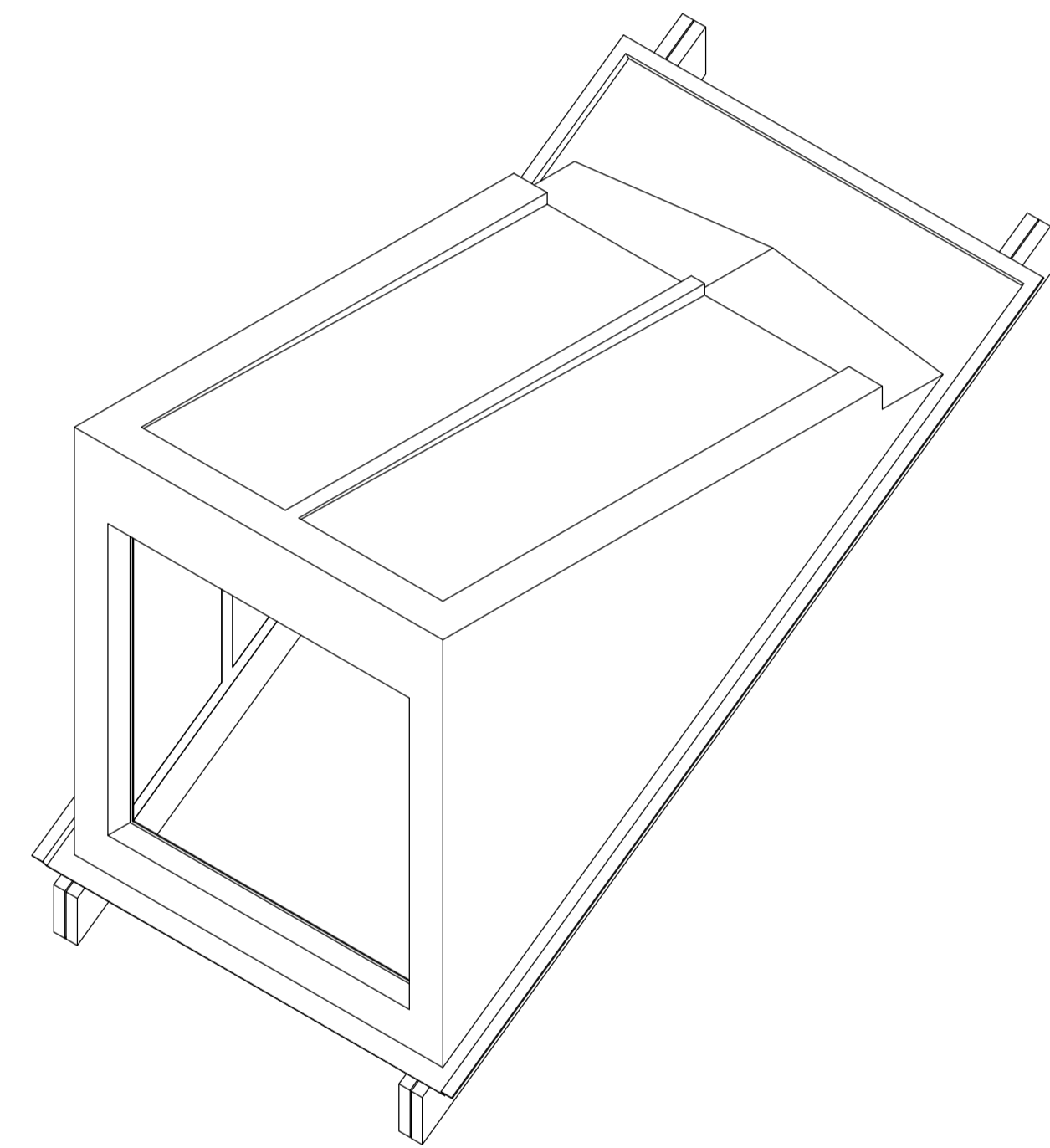
Section BB

Detail A

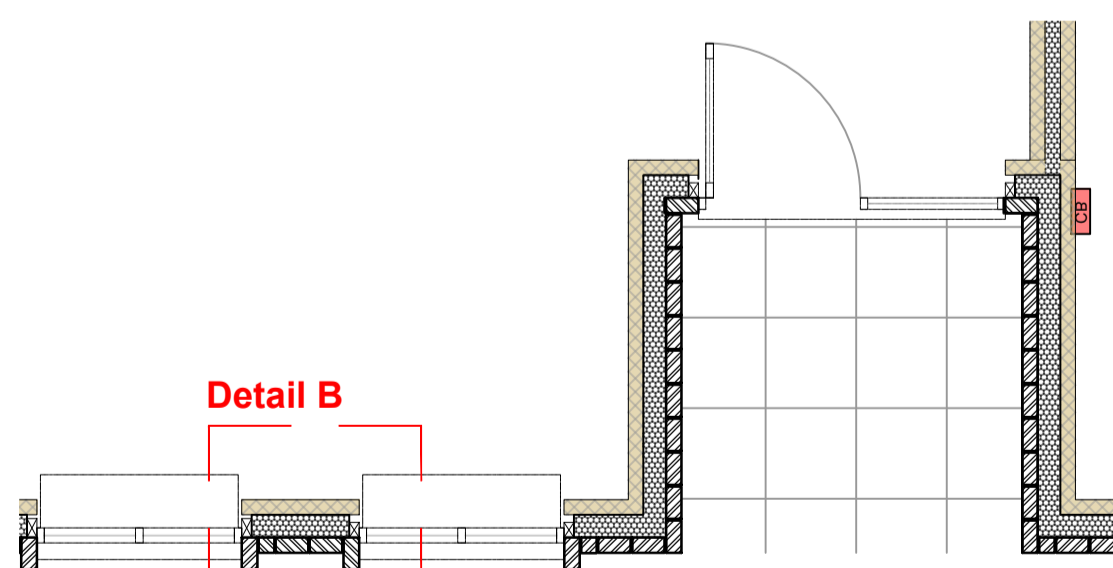
Dormer: StormKing FT35 1352 x 1210mm, Flat Top Dormer Window Roof, Colour RAL 9005



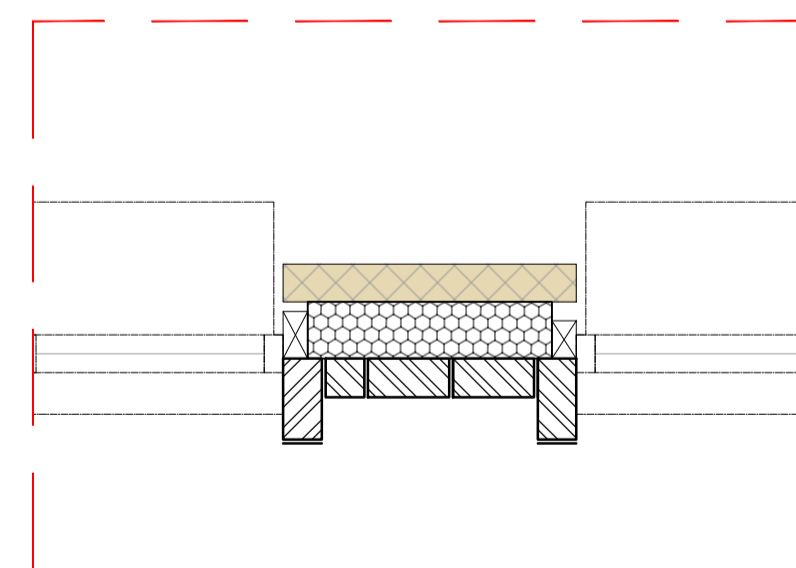
Front Elevation (1:20)



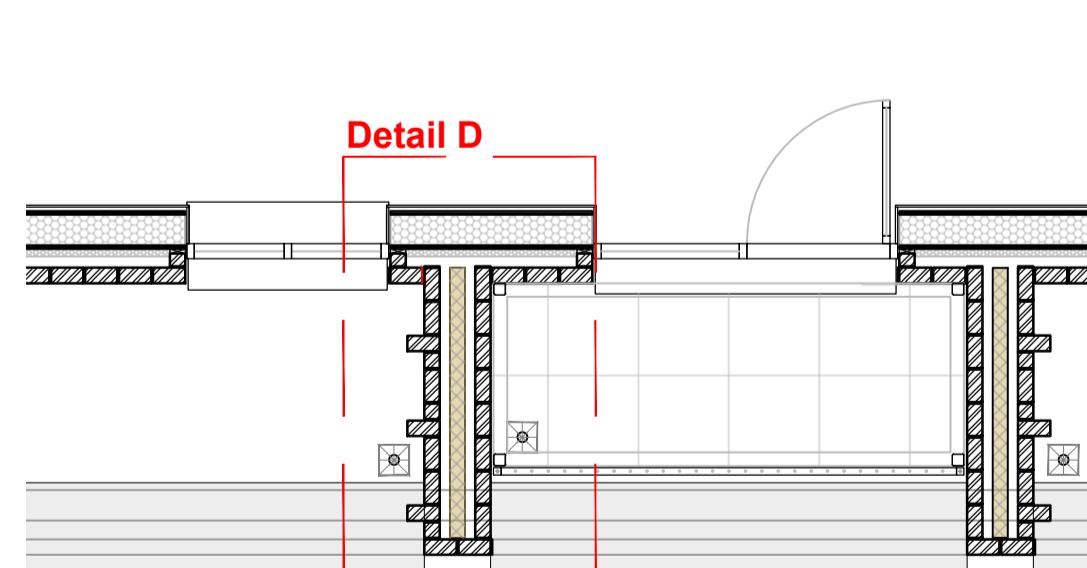
Perspective View (1:20)



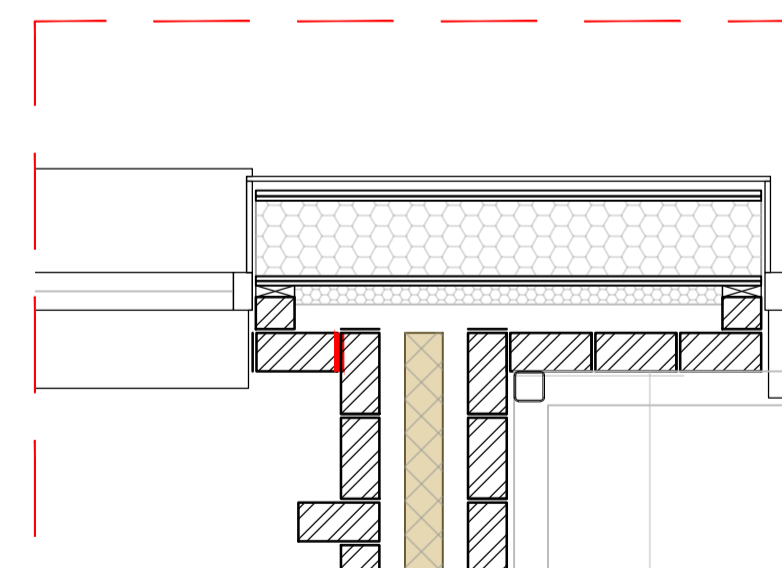
GROUND FLOOR PLAN EXTRACT 1:50



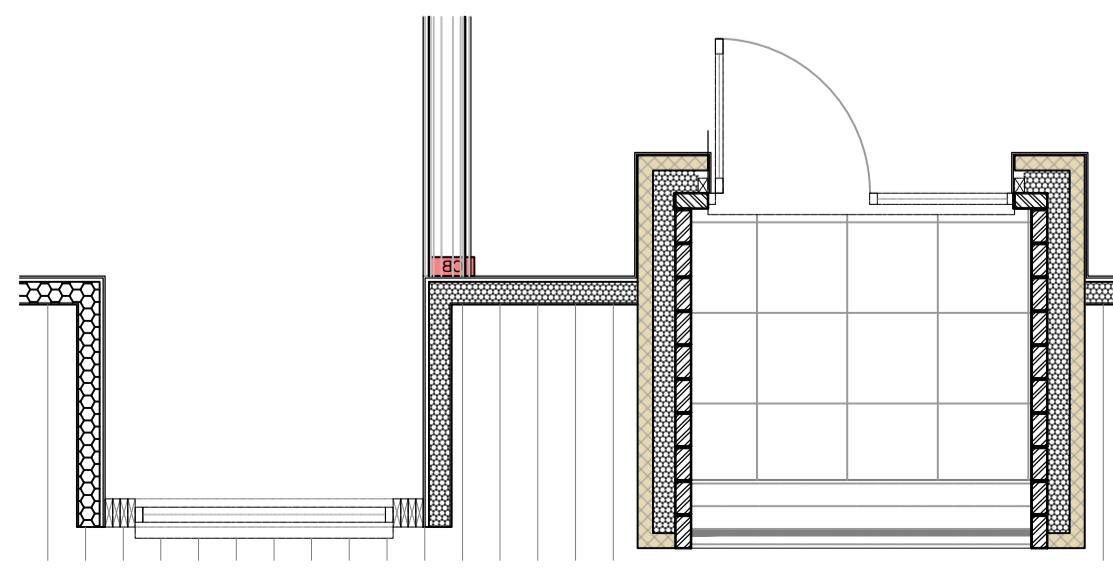
DETAIL B 1:20



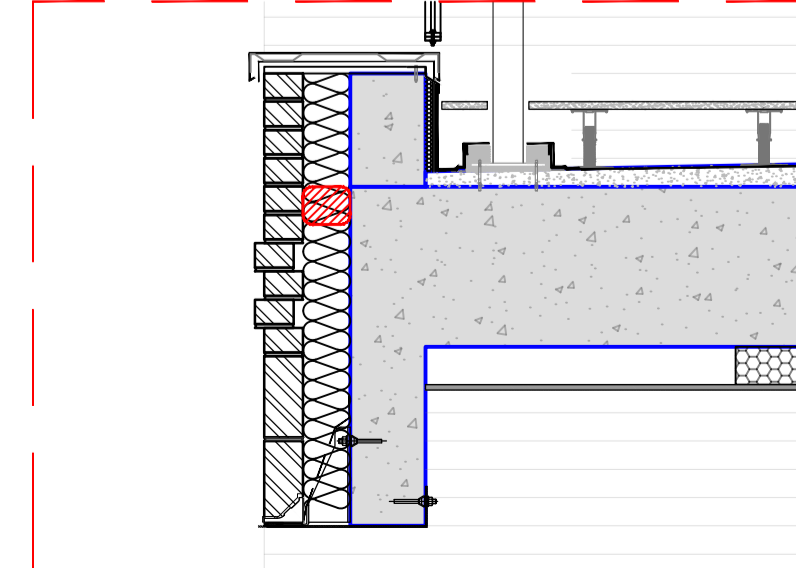
GROUND FLOOR PLAN EXTRACT 1:50



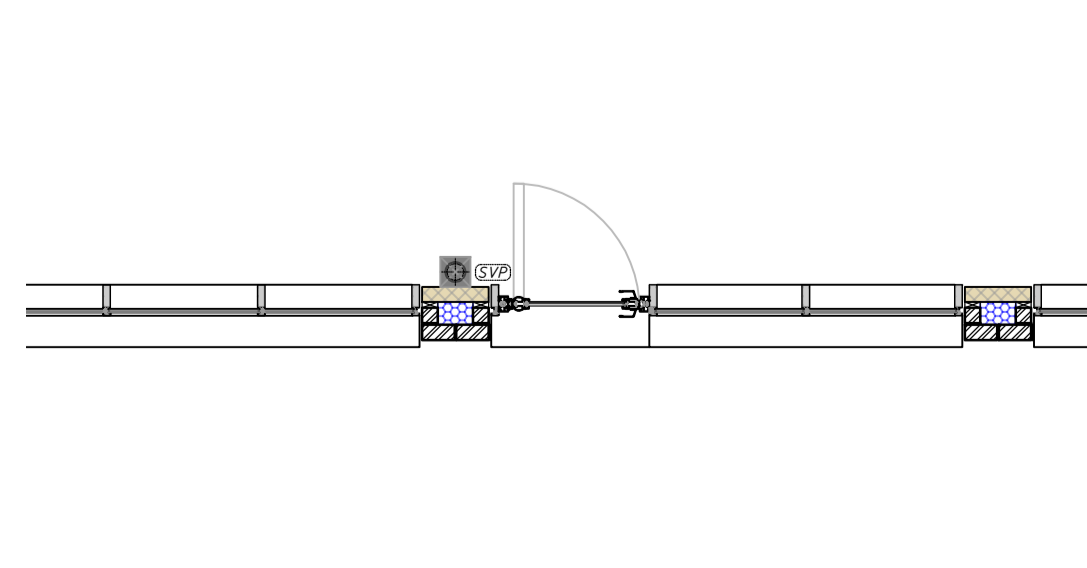
DETAIL D 1:20



4TH FLOOR PLAN EXTRACT 1:50



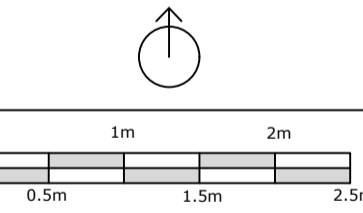
DETAIL C 1:20



1ST-3RD FLOOR PLAN EXTRACT 1:50

Notes:

| Rev | Description |
|-----|---|
| A | Amendment to Block F Commercial unit glazing & signage. |



PLANNING

Title
External Facing Materials Details

Site
Gasholder Site, Tayfen Rd, B-s-E

Date
July 23

Drawn
JM

Checked
MS

Scale
1:50@A1 / 1:100@A3

Drawing No.
WH208_23_P_30.02

Rev
A



General Notes

This drawing is the property of Weston Homes Plc and is issued on the condition that it is not reproduced, disclosed or copied for any unauthorized person without written consent. Levels are in AOD unless otherwise stated. Dimensions are in millimeters unless otherwise stated. Weston Homes Plc must be informed of any drawing errors immediately in writing. This drawing is for planning purposes only.

© WESTON HOMES PLC

Head Office
Weston Group Business Centre,
Paragon Road, Telford, Shropshire,
WV20 9PU
T: 01927 873333
www.weston-homes.com | email: info@weston-homes.com

London Office
10 Portman Square,
London,
W1H 6AZ
T: 0203 096 7208