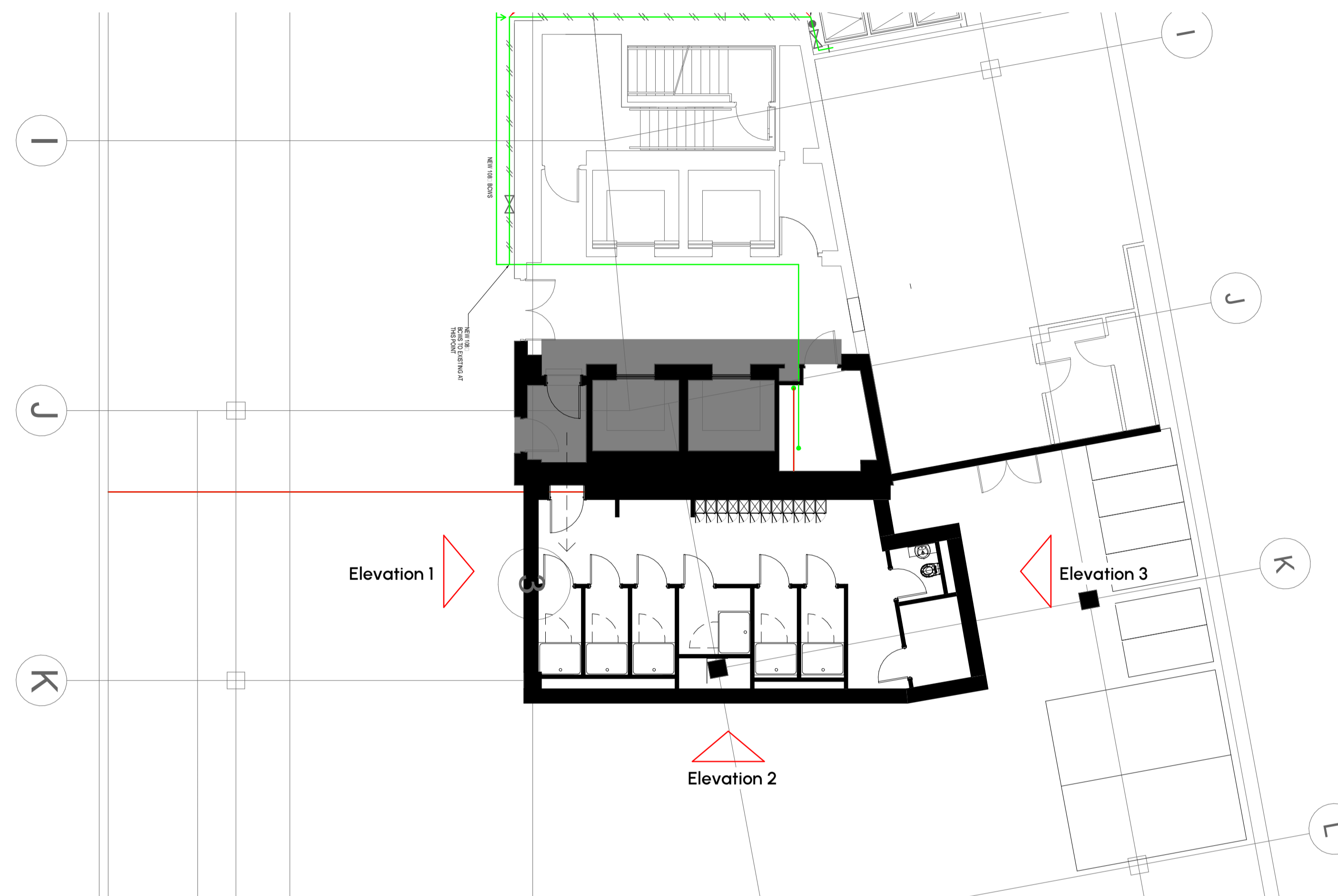


P Proposed Shower Room Layout (internal design / layout to be finalised)
1:50



S1 Basement Plan / Location Layout
1:100



SUITABILITY KEY:

- WIP**
S0 - Work in Progress*
(*Internal Use Only)
- SHARED**
S1 - Fit for co-ordination
S2 - Fit for information
S3 - Fit for internal review and comment
S4 - Fit for construction approval

- DOCUMENTATION**
D1 - Fit for casting
D2 - Fit for tender
D3 - Fit for contractor design
D4 - Fit for manufacture/ procurement

- DOCUMENTATION SIGN-OFF**
A - Fit for construction
B - Fit for construction, with comments
C - Comprehensive revisions needed

- ARCHIVE**
AB - As Built

Paramount

Client: St James Place UK
 Site: 10 Temple Back, Bristol BS1 6FL
 Title: Prop. Basement Area Layouts
 Scale: As indicated@A1
 Date created: 21/11/23
 Revision:
 Drawn by: JF
 Checked by: PAR

Drawing status: S2
 Suitability: Fit for information
 Drawing number: 19503 - PAR - XX - 00 - DR - 1 - P00002

All dimensions are in millimetres unless otherwise stated

Cardiff | Summers House, Pascal Close, St Mellons, Cardiff CF3 0LW
 Bristol | Dock House, Welsh Back, Bristol, Avon, BS1 4SB
 029 2083 9800 | paramountinteriors.com

Copyright This drawing is the property of Paramount Office Interiors Ltd