



# Lower Hyde Groups of Trees 07-23

## Evolve Trees

July 19, 2023 |  
Total Group Count: 18

### Filters Applied

**Survey Filter:**  
(Survey=2751-14 Lower Hyde)

Group ID #1

Group Details	
Common Name:	Sycamore
Life Stage:	Semi-mature
Physiological Condition:	Fair
Estimated Remaining Contribution:	Long (>40 years)
Quality Category:	A
Recommendations:	Would benefit from thinning.
Comments:	On steep bank down to south.

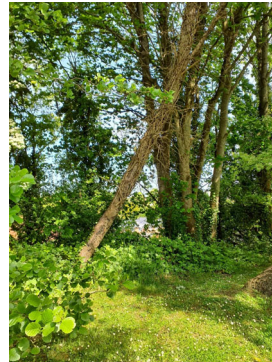
Photos Street View Map View



Group ID #2

Group Details	
Common Name:	Sycamore
Life Stage:	Early-mature
Physiological Condition:	Mixed
Estimated Remaining Contribution:	Long (>40 years)
Quality Category:	A
Recommendations:	Sever ivy. Remove dead tree within group.
Comments:	Some lapsed coppice sycamore trees within group. Ivy on stems. On steep, north-facing bank adjacent to neighbouring car-park. Exposed roots on upper Bank. Trees adjacent to entrance have been Crown-lifted.

Photos Street View Map View

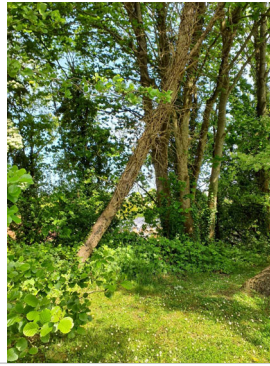


Group ID #2

Group Details	
Common Name:	Common Oak

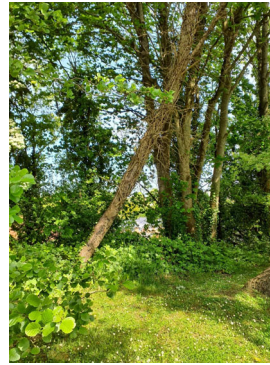
Photos Street View Map View

Life Stage:	Early-mature
Physiological Condition:	Mixed
Estimated Remaining Contribution:	Long (>40 years)
Quality Category:	A
Recommendations:	Sever ivy. Remove dead tree within group.
Comments:	Some lapsed coppice sycamore trees within group. Ivy on stems. On steep, north-facing bank adjacent to neighbouring car-park. Exposed roots on upper Bank. Trees adjacent to entrance have been Crown-lifted.

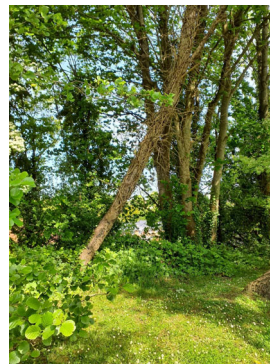


Group ID #2

Group Details	
Common Name:	Grey Poplar
Life Stage:	Early-mature
Physiological Condition:	Mixed
Estimated Remaining Contribution:	Long (>40 years)
Quality Category:	A
Recommendations:	Sever ivy. Remove dead tree within group.
Comments:	Some lapsed coppice sycamore trees within group. Ivy on stems. On steep, north-facing bank adjacent to neighbouring car-park. Exposed roots on upper Bank. Trees adjacent to entrance have been Crown-lifted.

[Photos](#)
[Street View](#)
[Map View](#)
Group ID #2

Group Details	
Common Name:	Hawthorn
Life Stage:	Early-mature
Physiological Condition:	Mixed
Estimated Remaining Contribution:	Long (>40 years)
Quality Category:	A
Recommendations:	Sever ivy. Remove dead tree within group.
Comments:	Some lapsed coppice sycamore trees within group. Ivy on stems. On steep, north-facing bank adjacent to neighbouring car-park. Exposed roots on upper Bank. Trees adjacent to


[Photos](#)
[Street View](#)
[Map View](#)


entrance have been Crown-lifted.

Group ID #3

Group Details	
Common Name:	Common Oak
Life Stage:	Early-mature
Physiological Condition:	Mixed
Estimated Remaining Contribution:	Long (>40 years)
Quality Category:	B
Recommendations:	No work required
Comments:	On steep bank down to south.

Photos Street View Map View





Group ID #3

Group Details	
Common Name:	Elder
Life Stage:	Early-mature
Physiological Condition:	Mixed
Estimated Remaining Contribution:	Long (>40 years)
Quality Category:	B
Recommendations:	No work required
Comments:	On steep bank down to south.

Photos Street View Map View



Group ID #3

Group Details	
Common Name:	Hawthorn
Life Stage:	Early-mature
Physiological Condition:	Mixed
Estimated Remaining Contribution:	Long (>40 years)
Quality Category:	B
Recommendations:	No work required
Comments:	On steep bank down to south.

Photos Street View Map View



Group ID #4

Group Details	
Common Name:	Common Alder
Life Stage:	Semi-mature
Physiological Condition:	Poor
Estimated Remaining Contribution:	Very Short (<10 years)
Quality Category:	C
Recommendations:	Remove alder trees.

Photos Street View Map View



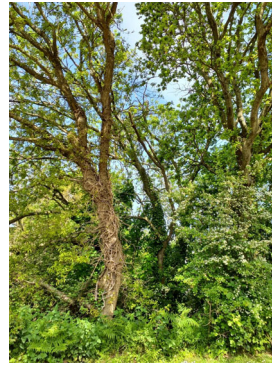
Comments:

Crown die-back,  
deadwood throughout  
tree, cavity on stem of  
alder by road. Ash to  
rear of group with  
symptoms of Ash die-  
back (ADB).

Group ID #4

Group Details	
Common Name:	Holly
Life Stage:	Semi-mature
Physiological Condition:	Poor
Estimated Remaining Contribution:	Very Short (<10 years)
Quality Category:	C
Recommendations:	Remove alder trees.
Comments:	Crown die-back, deadwood throughout tree, cavity on stem of alder by road. Ash to rear of group with symptoms of Ash die-back (ADB).

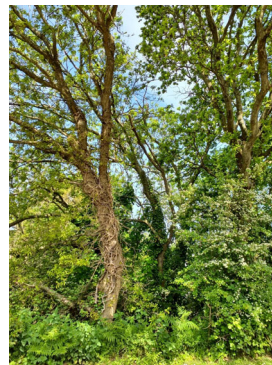
Photos Street View Map View



Group ID #4

Group Details	
Common Name:	Ash
Life Stage:	Semi-mature
Physiological Condition:	Poor
Estimated Remaining Contribution:	Very Short (<10 years)
Quality Category:	C
Recommendations:	Remove alder trees.
Comments:	Crown die-back, deadwood throughout tree, cavity on stem of alder by road. Ash to rear of group with symptoms of Ash die-back (ADB).

Photos Street View Map View



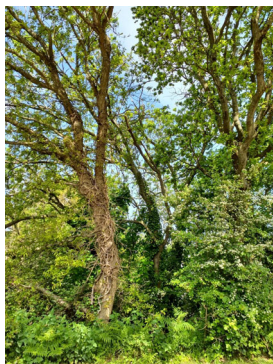
Group ID #4

Group Details	
Common Name:	Grey Poplar

Photos Street View Map View



Life Stage:	Semi-mature
Physiological Condition:	Poor
Estimated Remaining Contribution:	Very Short (<10 years)
Quality Category:	C
Recommendations:	Remove alder trees.
Comments:	Crown die-back, deadwood throughout tree, cavity on stem of alder by road. Ash to rear of group with symptoms of Ash die-back (ADB).



Group ID #5

Group Details	
Common Name:	Common Alder
Life Stage:	Early-mature
Physiological Condition:	Mixed
Estimated Remaining Contribution:	Long (>40 years)
Quality Category:	B
Recommendations:	Monitor Ash and alder.
Comments:	Alders in poor condition. Ash require monitoring for ADB.

Photos Street View Map View



Group ID #5

Group Details	
Common Name:	Sycamore
Life Stage:	Early-mature
Physiological Condition:	Mixed
Estimated Remaining Contribution:	Long (>40 years)
Quality Category:	B
Recommendations:	Monitor Ash and alder.
Comments:	Alders in poor condition. Ash require monitoring for ADB.

Photos Street View Map View



Group ID #5

Group Details	
Common Name:	Hawthorn
Life Stage:	Early-mature
Physiological Condition:	Mixed
Estimated Remaining Contribution:	Long (>40 years)
Quality Category:	B

Photos Street View Map View

Recommendations:	Monitor Ash and alder.
Comments:	Alders in poor condition. Ash require monitoring for ADB.



Group ID #5

Group Details	
Common Name:	Ash
Life Stage:	Early-mature
Physiological Condition:	Mixed
Estimated Remaining Contribution:	Long (>40 years)
Quality Category:	B
Recommendations:	Monitor Ash and alder.
Comments:	Alders in poor condition. Ash require monitoring for ADB.

Photos Street View Map View



Group ID #5

Group Details	
Common Name:	Holly
Life Stage:	Early-mature
Physiological Condition:	Mixed
Estimated Remaining Contribution:	Long (>40 years)
Quality Category:	B
Recommendations:	Monitor Ash and alder.
Comments:	Alders in poor condition. Ash require monitoring for ADB.

Photos Street View Map View



Group ID #5

Group Details	
Common Name:	Common Oak
Life Stage:	Early-mature
Physiological Condition:	Mixed
Estimated Remaining Contribution:	Long (>40 years)
Quality Category:	B

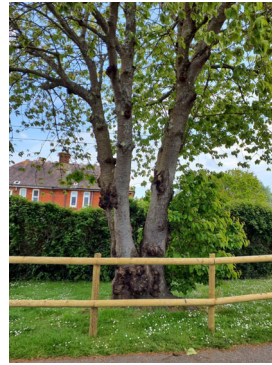
Photos Street View Map View

Recommendations:	Monitor Ash and alder.
Comments:	Alders in poor condition. Ash require monitoring for ADB.

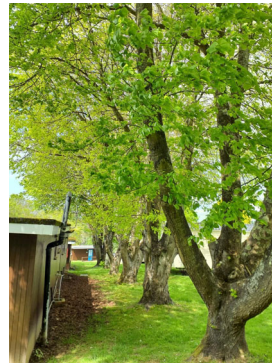


Group ID #6

Group Details	
Common Name:	Ornamental Cherry
Life Stage:	Late-mature
Physiological Condition:	Mixed
Estimated Remaining Contribution:	Short (10 to 20 years)
Quality Category:	B
Recommendations:	No work required.
Comments:	Group of cherries in car park. Some canker evident in stem of southern tree.

[Photos](#)
[Street View](#)
[Map View](#)
Group ID #7

Group Details	
Common Name:	Common Lime
Life Stage:	Early-mature
Physiological Condition:	Good
Estimated Remaining Contribution:	Long (>40 years)
Quality Category:	A
Recommendations:	Maintain current management.
Comments:	Crown-lifted to current dimensions. Good occlusion on wounds.

[Photos](#)
[Street View](#)
[Map View](#)
Group ID #8

Group Details	
Common Name:	Common Oak
Life Stage:	Early-mature
Physiological Condition:	Good
Estimated Remaining Contribution:	Long (>40 years)

[Photos](#)
[Street View](#)
[Map View](#)



Quality Category:	A
Recommendations:	No work required
Comments:	Crown lifted over caravans.



Group ID #8

Group Details	
Common Name:	Turkey Oak
Life Stage:	Early-mature
Physiological Condition:	Good
Estimated Remaining Contribution:	Long (>40 years)
Quality Category:	A
Recommendations:	No work required
Comments:	Crown lifted over caravans.

Photos Street View Map View



Group ID #9

Group Details	
Common Name:	Ash
Life Stage:	Early-mature
Physiological Condition:	Poor
Estimated Remaining Contribution:	Very Short (<10 years)
Quality Category:	U
Recommendations:	Remove group & replace.
Comments:	Ash with Stage 1 ADB. Alders in decline, likely Phytophthora.

Photos Street View Map View



Group ID #9

Group Details	
Common Name:	Common Alder
Life Stage:	Early-mature
Physiological Condition:	Poor
Estimated Remaining Contribution:	Very Short (<10 years)
Quality Category:	U

Photos Street View Map View

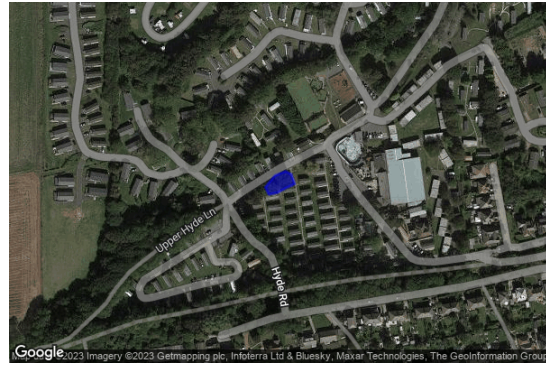
Recommendations:	Remove group & replace.
Comments:	Ash with Stage 1 ADB. Alders in decline, likely Phytophthora.



Group ID #10

Group Details	
Common Name:	Ash
Life Stage:	Mature
Physiological Condition:	Poor
Estimated Remaining Contribution:	Very Short (<10 years)
Quality Category:	U
Recommendations:	Remove & replace both trees. Medium priority. Within 3 years.
Comments:	Tag 849. ADB Stage 1

Photos Street View Map View



Group ID #11

Group Details	
Common Name:	Ash
Life Stage:	Semi-mature
Physiological Condition:	Poor
Estimated Remaining Contribution:	Very Short (<10 years)
Quality Category:	U
Recommendations:	Remove and replace within one year. Medium priority.
Comments:	Stage 2/3 ADB

Photos Street View Map View

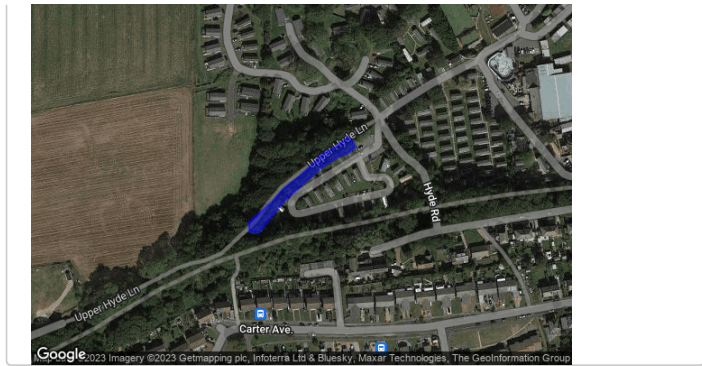


Group ID #12

Group Details	
Common Name:	Ash
Life Stage:	Semi-mature
Physiological Condition:	Poor
Estimated Remaining Contribution:	Very Short (<10 years)
Quality Category:	C

Photos Street View Map View

Recommendations:	Monitor development of ADB in accordance with guidance. Medium priority.
Comments:	Stage 1/2 ADB



Group ID #13

Group Details	
Common Name:	Ash
Life Stage:	Semi-mature
Physiological Condition:	Poor
Estimated Remaining Contribution:	Very Short (<10 years)
Quality Category:	C
Recommendations:	Monitor development of ADB in accordance with guidance. Medium priority. Remove Ash trees are Stage 3 (Appley van 21).
Comments:	Stage 2/3 ADB

Photos Street View Map View



Group ID #13

Group Details	
Common Name:	Common Oak
Life Stage:	Semi-mature
Physiological Condition:	Poor
Estimated Remaining Contribution:	Very Short (<10 years)
Quality Category:	C
Recommendations:	Monitor development of ADB in accordance with guidance. Medium priority. Remove Ash trees are Stage 3 (Appley van 21).
Comments:	Stage 2/3 ADB

Photos Street View Map View



Group ID #14

Group Details	
Common Name:	Ash
Life Stage:	Early-mature

Photos Street View Map View



Physiological Condition:	Poor
Estimated Remaining Contribution:	Very Short (<10 years)
Quality Category:	U
Recommendations:	Remove and replace. As soon as resources allow & in line with guidance in ADB policy.
Comments:	Stage 2/3 ADB.



Group ID #15

Group Details	
Common Name:	Ash
Life Stage:	Early-mature
Physiological Condition:	Poor
Estimated Remaining Contribution:	Very Short (<10 years)
Quality Category:	U
Recommendations:	Remove trees, leave dead wood in edge of woodland. Allow for natural regeneration. Low risk as low targets. As & when resources allow.
Comments:	ADB Stage 4

[Photos](#)
[Street View](#)
[Map View](#)
Group ID #16

Group Details	
Common Name:	Ash
Life Stage:	Early-mature
Physiological Condition:	Poor
Estimated Remaining Contribution:	Very Short (<10 years)
Quality Category:	U
Recommendations:	Remove & replace two smaller trees. Monitor retained tree annually.
Comments:	ADB Stage 2/3. Two trees to north-west affected, largest tree to South-East not yet showing significant decline.

[Photos](#)
[Street View](#)
[Map View](#)
Group ID #17

Group Details	
Common Name:	Western Balsam Poplar

[Photos](#)
[Street View](#)
[Map View](#)

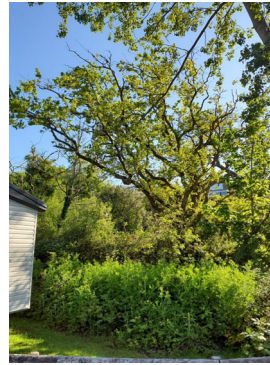
Life Stage:	Mature
Physiological Condition:	Good
Estimated Remaining Contribution:	Medium (20 to 40 years)
Quality Category:	
Recommendations:	No work required. Reinspect in 5 years.
Comments:	Crown lifted to current dimensions.



Group ID #18

Group Details	
Common Name:	Common Oak
Life Stage:	Mature
Physiological Condition:	Mixed
Estimated Remaining Contribution:	Long (>40 years)
Quality Category:	
Recommendations:	Reduce ash if feasible. Access is difficult & I can't access tree to assess target.
Comments:	Ash & oak within group in decline. Ash at Stage 4 ADB. Oak presents low risk, no action required.

Photos Street View Map View



Group ID #18

Group Details	
Common Name:	Hawthorn
Life Stage:	Mature
Physiological Condition:	Mixed
Estimated Remaining Contribution:	Long (>40 years)
Quality Category:	
Recommendations:	Reduce ash if feasible. Access is difficult & I can't access tree to assess target.
Comments:	Ash & oak within group in decline. Ash at Stage 4 ADB. Oak presents low risk, no action required.

Photos Street View Map View

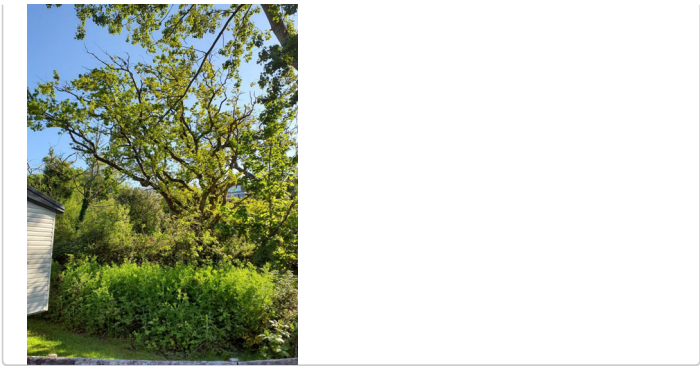


Group ID #18

Group Details	
---------------	--

Photos Street View Map View

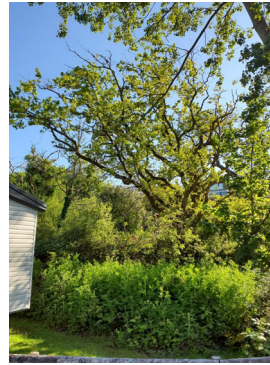
Common Name:	Sycamore
Life Stage:	Mature
Physiological Condition:	Mixed
Estimated Remaining Contribution:	Long (>40 years)
Quality Category:	
Recommendations:	Reduce ash if feasible. Access is difficult & I can't access tree to assess target.
Comments:	Ash & oak within group in decline. Ash at Stage 4 ADB. Oak presents low risk, no action required.



Group ID #18

Group Details	
Common Name:	Ash
Life Stage:	Mature
Physiological Condition:	Mixed
Estimated Remaining Contribution:	Long (>40 years)
Quality Category:	
Recommendations:	Reduce ash if feasible. Access is difficult & I can't access tree to assess target.
Comments:	Ash & oak within group in decline. Ash at Stage 4 ADB. Oak presents low risk, no action required.

Photos Street View Map View



Group ID #18

Group Details	
Common Name:	Blackthorn
Life Stage:	Mature
Physiological Condition:	Mixed
Estimated Remaining Contribution:	Long (>40 years)
Quality Category:	
Recommendations:	Reduce ash if feasible. Access is difficult & I can't access tree to assess target.
Comments:	Ash & oak within group in decline. Ash at Stage 4 ADB. Oak presents low risk, no action required.

Photos Street View Map View

