

Revision	Date	Dwn	Ckd
C05	27.04.22	OB	MY
C06	11.12.23	GS	MY
C07	21.12.23	GS	MY
C08	12.01.24	CAD	MY

PLANTING NOTES

- Plant material to conform to the National Plant Specification. All plant stock to originate from within the UK. Plant handling and planting operations to be in accordance with HTA 'Handling and Establishing Landscape Plants', Parts I-III.
- Existing in-situ topsoil to be reused. Topsoil to be fertile with maximum 35% clay content and 5% minimum organic content, pH 5.8 - 7.5 and to be free of perennial weeds, weed seeds and contamination. Maximum stone content 20% (20mm+ particle size), maximum size of stones 50mm in any direction. Existing topsoil to be ameliorated and/or screened if necessary to achieve this specification.
- Any Imported topsoil to be to BS 3882:2015 Multi Purpose Grade, from an approved source, and to accord with the above specification.
- Existing grassland to be removed to create suitable planting conditions.
- Topsoil/subsoil to be cultivated/ripped to a depth of 500mm to relieve compaction, create a sterile seedbed.
- Excess topsoil to be distributed on site where possible (subject to accordance with above specification).
- Existing vegetation that is approved to be felled and roots mechanically removed as required. Refer to approved Arborist Consultant information, reports, drawings and methods.

LEGEND

- Root Barrier Membrane
- Application Site Boundary
- Existing Retained Tree canopy
- Lawn seeded (Emorsgate EL1)
- Shrub planting
- Root Protection Area
- Proposed Tree

PLANT SCHEDULE

Number	Abbreviation	Species	Specification	Girth
4 -	BETPU	Betula pubescens	Clear Stem min. 200; Container 18-20cm	
391 -	CARBET	Carpinus betulus	80-100cm Hedge	
1 -	ACEPS	Acer pseudoplatanus	Clear Stem min. 200; Container 40-45cm	
2 -	ACEPLEQ	Acer platanoides 'Emerald Queen'	Clear Stem min. 200; Container 40-45cm	
7 -	Ac	Acer campestre	Clear Stem min. 200; Container 18-20cm	
2 -	Qr	Quercus robur	Clear Stem min. 200; Container 20-25cm	

Number	Abbreviation	Species	Specification	Density	Pot Size
161 -	Agr	Agrostis spp.	Full Pot	7/m ²	2L
161 -	Cis	Cistus spp.	Full Pot	7/m ²	2L
161 -	Cal	Calluna vulgaris	Full Pot	7/m ²	2L
81 -	Esc	Escalonia spp.	Full Pot	7/m ²	2L
81 -	Rfu	Buddleia spp.	Full Pot	7/m ²	2L
161 -	Verb	Verbena bonariensis	Full Pot	7/m ²	2L
Total :806 -					

Number	Abbreviation	Species	Specification	Density	Pot Size
726 -	Sal	Salvia spp.	Full Pot	7/m ²	2L
726 -	Cyc	Cytisus scoparius	Full Pot	7/m ²	2L
726 -	Lav	Lavandula spp.	Full Pot	7/m ²	2L
726 -	Cis	Cistus spp.	Full Pot	7/m ²	2L
726 -	Heb	Heb spp.	Full Pot	7/m ²	2L
Total :3630 -					

Number	Abbreviation	Species	Specification	Density	Weight
82 -	ACECAM	Acer campestre	2ltr Pots :4 brks 5/m		
17 -	CORSA	Cornus sanguinea	2ltr Pots :4 brks 5/m		
33 -	CORAV	Corylus avellana	2ltr Pots :4 brks 5/m		
98 -	CRAMON	Crataegus monogyna	2ltr Pots :4 brks 5/m		
7 -	ILEAQ	Ilex aquifolium	2ltr Pots :4 brks 5/m		
17 -	MALSYL	Malus sylvestris	2ltr Pots :4 brks 5/m		
10 -	Pav	Prunus avium	2ltr Pots :4 brks 5/m		
33 -	PRUSP	Prunus spinosa	2ltr Pots :4 brks 5/m		
17 -	QUERO	Quercus robur	2ltr Pots :4 brks 5/m		
17 -	SAMNI	Sambucus nigra	2ltr Pots :4 brks 5/m		
Total :331 -					

Number	Abbreviation	Species	Specification	Density	Pot Size
122 -	Cmo	Crataegus monogyna	7/m ²	2L	
122 -	PRUSP	Prunus spinosa	7/m ²	2L	
105 -	Rca	Rosa canina	7/m ²	2L	
Total :349 -					

Number	Abbreviation	Species	Specification	Density	Pot Size
276 -	CARBET	Carpinus betulus	Full Pot	7/m ²	2L
276 -	Cav	Corylus avellana	Full Pot	7/m ²	2L
414 -	He he	Hedera helix	Full Pot	7/m ²	2L
414 -	ILEAQ	Ilex aquifolium	Full Pot	7/m ²	2L
138 -	MALSY	Malus sylvestris	Full Pot	7/m ²	10L
827 -	POLVU	Polypodium vulgare	Full Pot	7/m ²	2L
414 -	VIBOP	Viburnum opulus	Full Pot	7/m ²	2L
Total :2759 -					

CONSTRUCTION

Project
Kingston Small Sites

Drawing Title
**Cumberland House
Soft Landscape Plan**

Date
04.11.2020

Scale
1:200 @A1

Drawn by
JH

Check by
OB

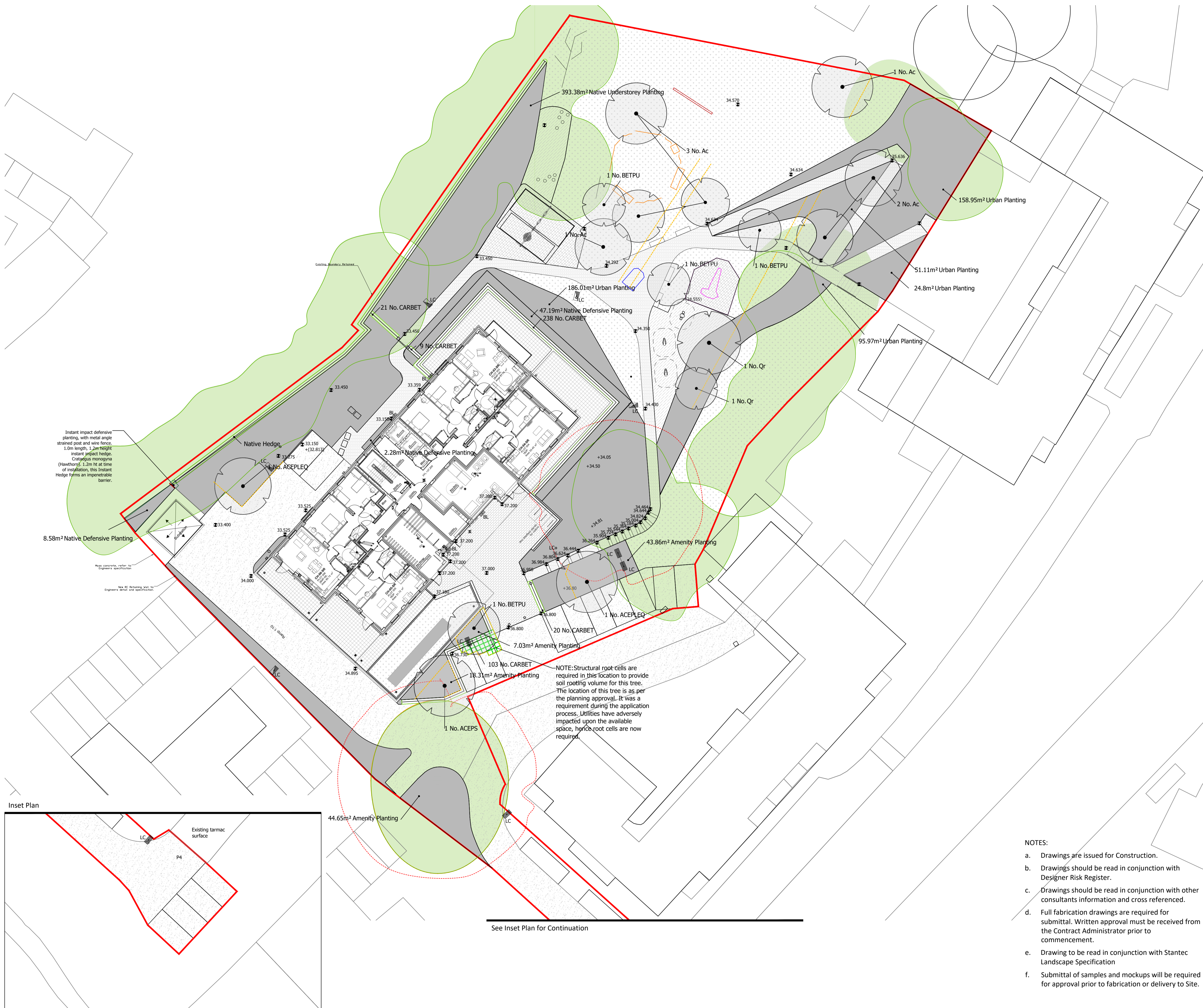
Project No
31345

Drawing No
V00002-BWE-CH-00-DR-L-1002

Revision
C08

NOTES:

- Drawings are issued for Construction.
- Drawings should be read in conjunction with Designer Risk Register.
- Drawings should be read in conjunction with other consultants information and cross referenced.
- Full fabrication drawings are required for submittal. Written approval must be received from the Contract Administrator prior to commencement.
- Drawing to be read in conjunction with Stantec Landscape Specification
- Submittal of samples and mockups will be required for approval prior to fabrication or delivery to Site.



Stantec UK Limited
The Blade
Abbey Square
Reading
RG1 3BE
T: 0118 9430 000
stantec.com/uk