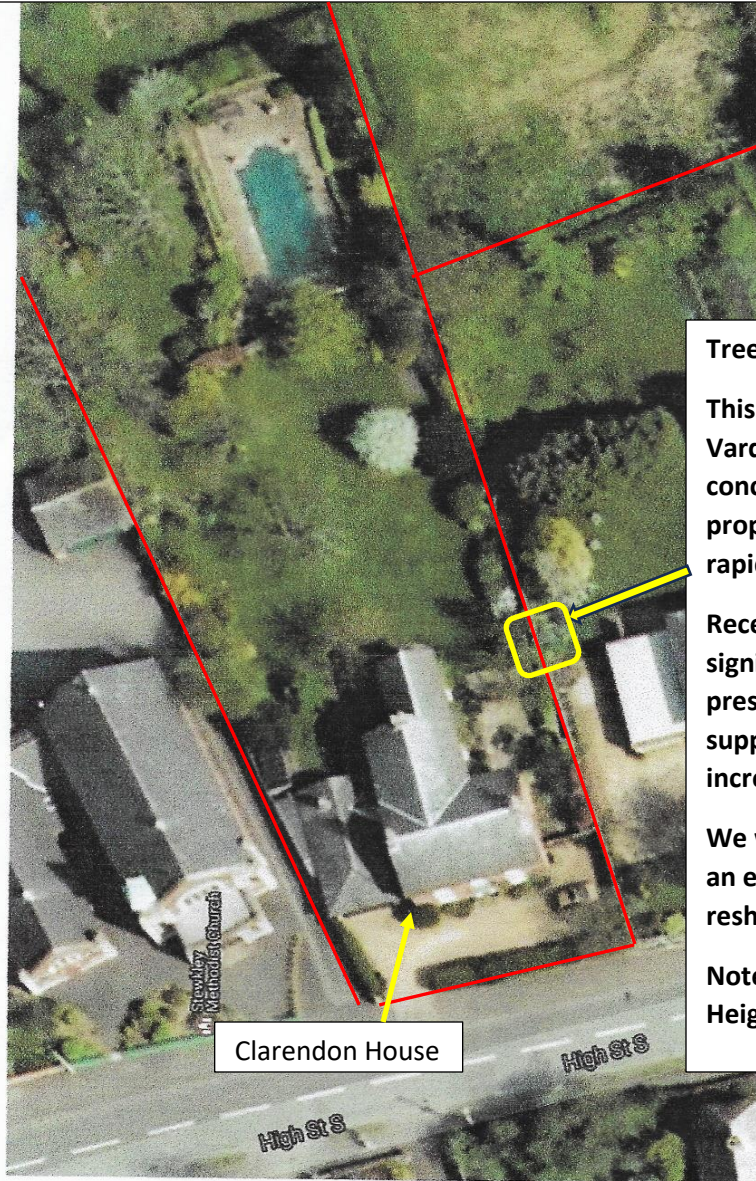


Clarendon House, 111A High Street South, Stewkley, LU7 0HU. – Boundary outlined in RED

Michael Boden Tel: 07956 679244

Identification of the Tree for which 'Notice' is Being Given.



Tree 1

This Eucalyptus is on our side of boundary with Varden House. We, and our neighbours, are concerned that it is now a danger to our properties and its residents. The tree has grown rapidly to 20 metres.

Recent high winds have resulted in a small but significant leaning and signs of ground heave, presumably because its shallow roots cannot support the greater wind-leverage due to its increased height.

We wish to reduce its height by 40% down to an earlier 'cut line' and to appropriately reshape the remaining crown.

Note: Previous AVDC Approval to reduce Height Ref: 19/01539/ATC.