

# Condition 7. Nesting Opportunities

## Up the Steps, Little Tew

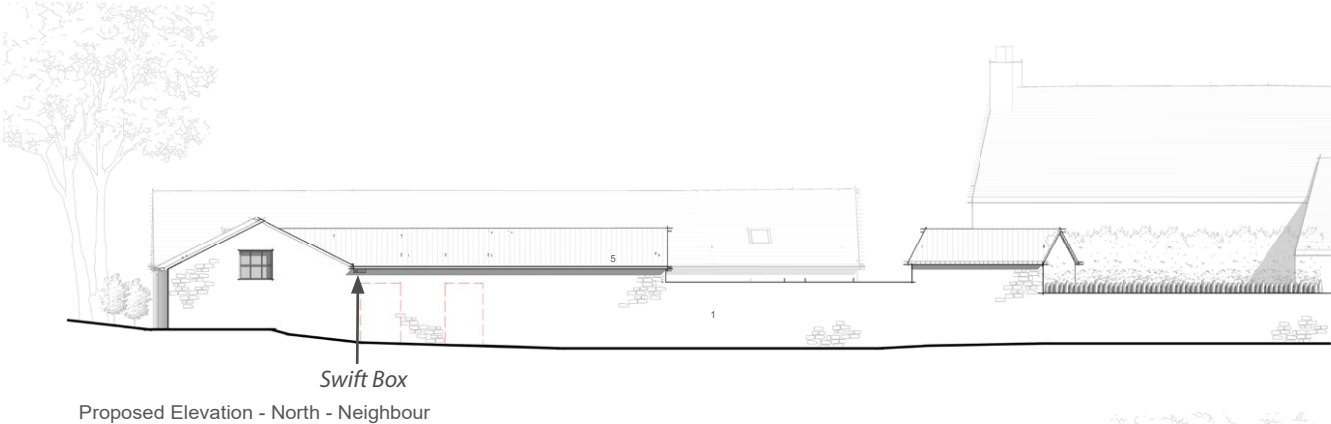
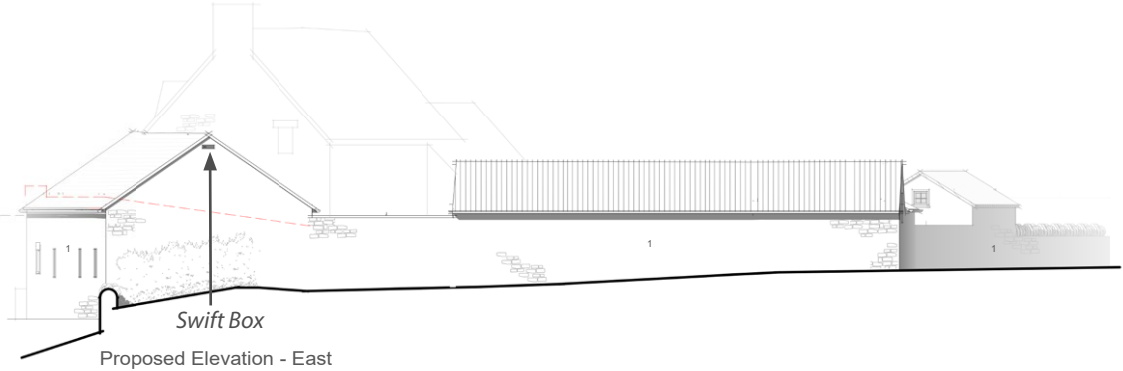
January 2024



Tyack Architects Ltd  
The Mann Institute, Oxford Street  
Moreton-in-Marsh  
Gloucestershire, GL56 0LA

t: 01608 650 490  
f: 01608 651 863  
e: [mail@tyackarchitects.com](mailto:mail@tyackarchitects.com)  
w: [tyackarchitects.com](http://tyackarchitects.com)

Detailed below are the locations for nesting opportunities for swifts on the walls of the converted Long Barn and Goatshed at Up the Steps, Little Tew.



*Positioning of swift bricks on north and east elevations.*



*Positioning of swift boxes shown in plan*



*Example of type of swift box to be used*

Swift boxes will be erected before the beginning of nesting season prior to May 2025.

Presently, there are artificial swallow nests installed at the outbuilding northwest of the goatshed (not affected by the proposal), which will be retained. Swallows have previously nested in this location.



Tyack Architects Ltd  
The Mann Institute, Oxford Street  
Moreton-in-Marsh  
Gloucestershire, GL56 0LA

t: 01608 650 490  
f: 01608 651 863  
e: [mail@tyackarchitects.com](mailto:mail@tyackarchitects.com)  
w: [tyackarchitects.com](http://tyackarchitects.com)