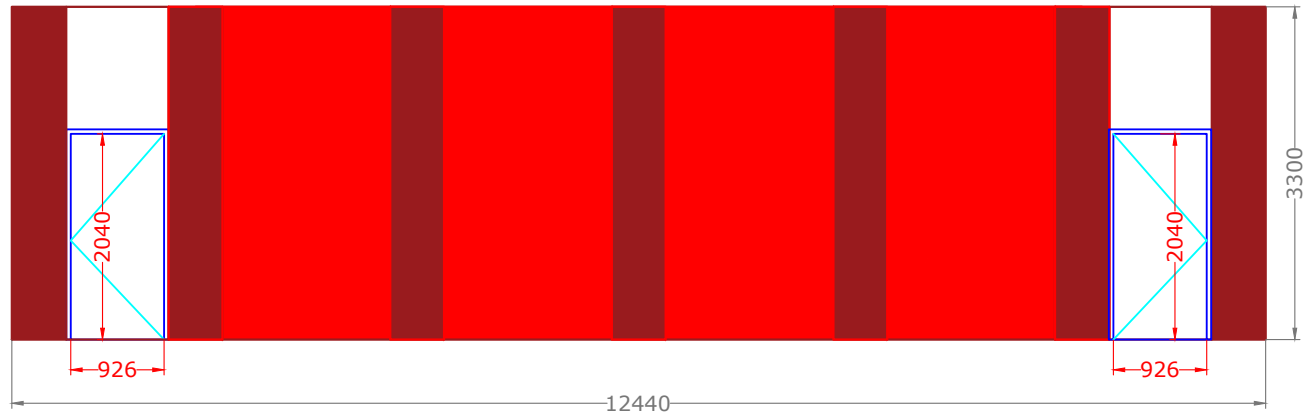
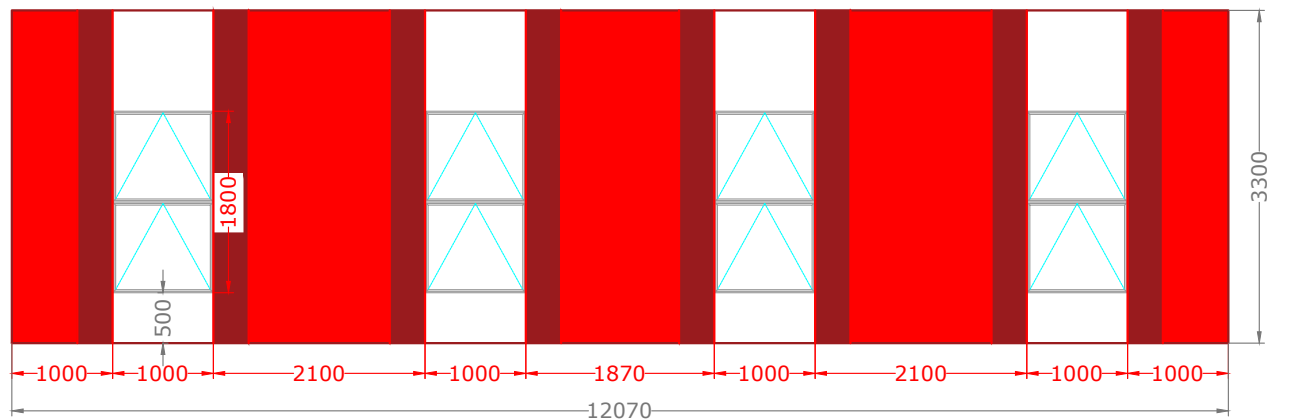


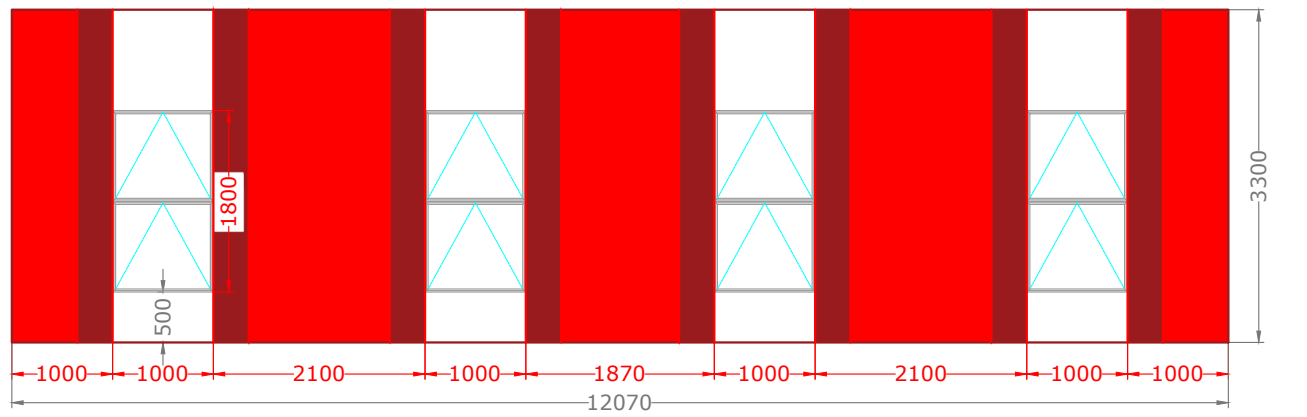
1 Elevation 'A'.  
Scale: 1:75



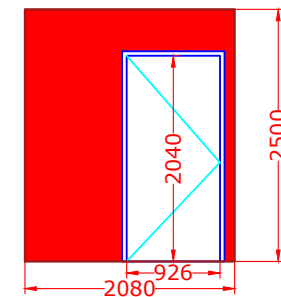
2 Elevation 'B'.  
Scale: 1:75



3 Elevation 'C'.  
Scale: 1:75



4 Elevation 'D'.  
Scale: 1:75



5 Elevation 'E'.  
Scale: 1:75

**NOTES.**

- Roof Grey Felt.
- Cladding above and below window and above doors White.
- Internal Wall 145 mm thick.
- External Wall 185 mm thick. (Including Cladding)
- 35 mm Cladding to external Walls.
- Windows Anthracite UPVC Double glazed. Top Hung over Top Hung (1000 mm x 1800 mm)
- Rain Water Pipes to Elevation 'C'

**Doors.**

- All other external doors - Anthracite Metador Defender plastisol steel doors with panic bars. (926 mm x 2040 mm)
- Internal doors Howden FD30 Oak flush doors with 200 mm x 1400 mm vision Panel. (926 mm x 2040 mm)

REV	DATE	BY	DESCRIPTION

**APPROVAL.**

DRAWING ISSUE STATUS

REV	DATE	BY	DESCRIPTION

TITLE Proposed Elevations.

SCALE	CONTRACT	DRAWING	REV
1:100	WS-501	EL-101	A1
DRAWN	DATE		
CM	01/12/23		