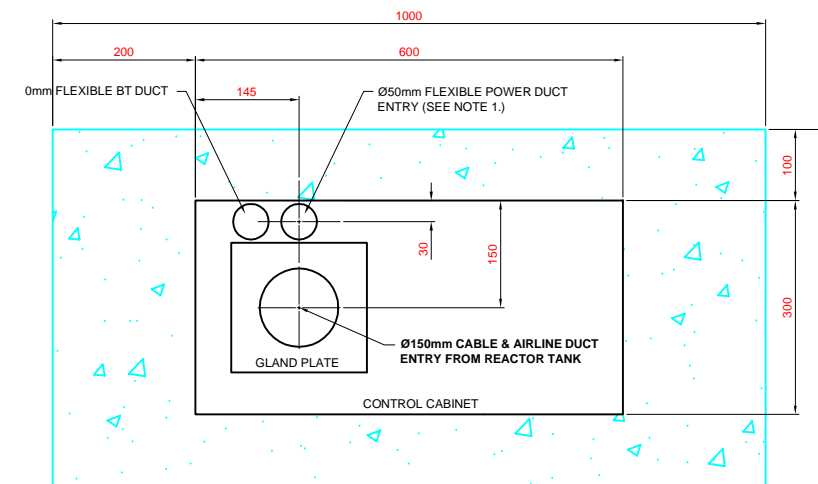
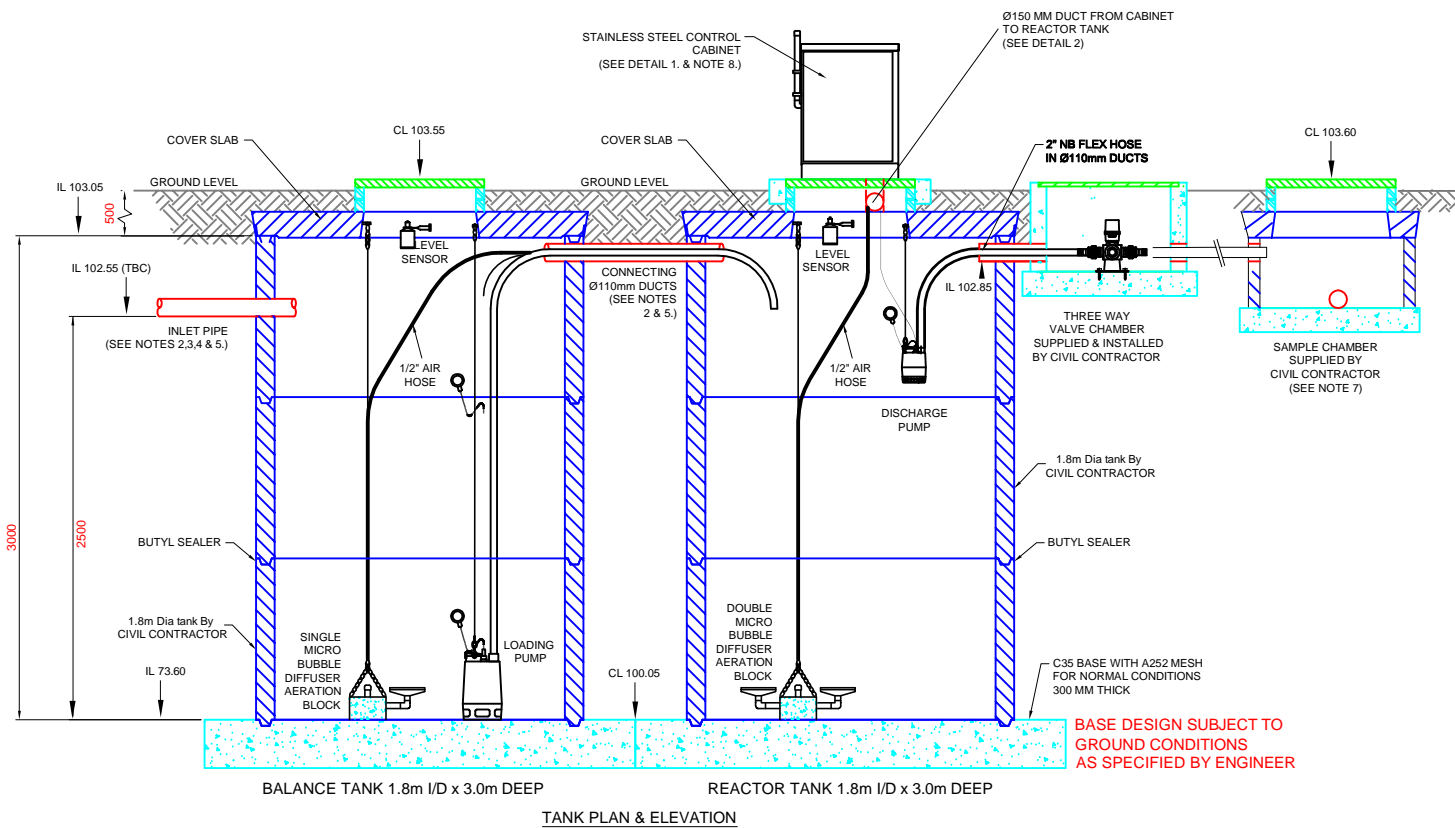


DETAIL 1. STAINLESS STEEL CONTROL CABINET SCALE 1:10



REV	DESCRIPTION	BY	DATE
0	FIRST ISSUE	BS	30-05-23

This drawing is the property of Advanced Aeration Ltd. It is an official document and must only be used for the purpose specified. It must not be copied or otherwise communicated to any third party without prior written consent.

HOLDS

UNCONTROLLED FOR QUOTATION PURPOSES ONLY

BIO BUBBLE TECHNOLOGIES

ADVANCED AERATION

COMBINED WASTEWATER & SLUDGE TREATMENT
TEL : - 02392 200669 FAX : - 02392 387460

- NOTES:-**
- 1) DIRECTION OF POWER DUCT ENTRY TO BE DETERMINED ON SITE.
 - 2) TOP OF INLET, OVERFLOW, CONNECTING & PUMP DISCHARGE PIPES & DUCTS TO BE AS CLOSE TO UNDERSIDE OF COVER SLAB AS POSSIBLE.
 - 3) VOLUME & WATER DEPTH ARE IMPORTANT DESIGN FACTORS THEREFORE INLET PIPE INVERT SHOULD BE NO LOWER THAN 2000mm MIN. FROM TOP OF BASE FOR BEST RESULTS.
 - 4) INLET PIPE INVERT LEVELS HIGHER THAN THE RECOMMENDED 2000mm DIMENSION CAN BE ACCOMMODATED BY THE ADDITION OF EXTRA PART OR WHOLE MILTON RINGS.
 - 5) IN THE EVENT OF ANY HYDRAULIC ISSUES PLEASE CONTACT BIO-BUBBLE FOR FURTHER ADVICE.
 - 6) VALVE CHAMBER IS NOT PART OF STANDARD SCOPE OF BIO-BUBBLE SUPPLY.
 - 7) SAMPLE CHAMBER IS NOT PART OF STANDARD SCOPE OF BIO-BUBBLE SUPPLY.
 - 8) CONTROL CABINET TO BE SITED NO MORE THAN 3m FROM REACTOR WITHOUT PRIOR CONSULTATION WITH BIO-BUBBLE.

CLIENT	
CONSULTANTS	BROOKESWOOD DEV.
CIVIL CONTRACTOR	

DRAWING TITLE :-					
SO32 3QH WwTP (12pe Low Nutrient) TYP. GENERAL ARRANGEMENT					
DRAWN BY	DATE	CHECKED BY	DATE	APPROVED BY	DATE
MGA	06-06-23				
DRAWING No :-					
BB01539-101-001					
UNITS IN mm	SCALE AS SHOWN	A1	SHEET 1 OF 1	REV 0	