

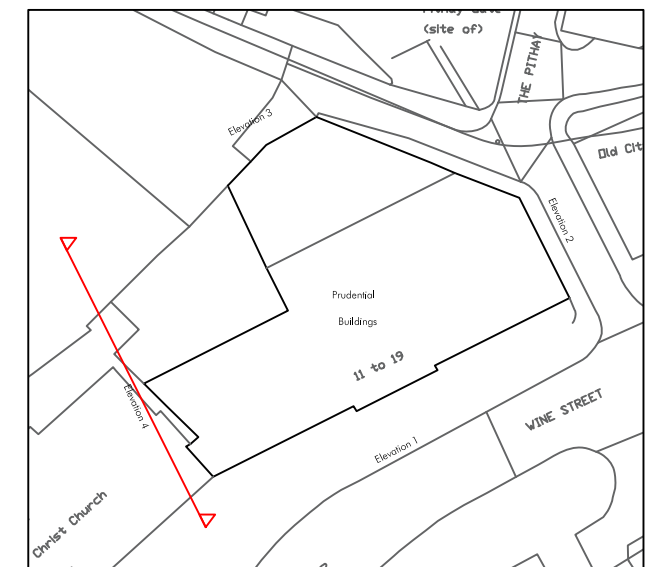
General Note:
Care should be taken when drawings are printed to avoid image distortion.

Copyright:
This document and all information contained herein is the sole property of CBRE Ltd, reproduction in any form is strictly forbidden unless permission in writing is obtained.

All levels are in metres and are above Ordnance Datum Newlyn derived by active GPS observations taken over an extended period of time.



+ XX.XX Height from Ordnance Survey Datum Line

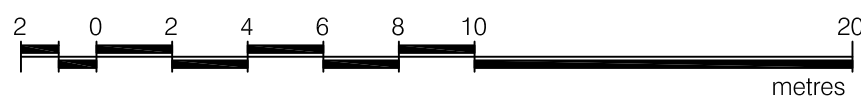


Location Plan
NTS



CBRE Limited, Henrietta House, Henrietta Place,
London, W1G 0NB
Switchboard: 0207 182 2000 Fax: 0207 182 3007
Web: www.cbre.com

Elevation 4



Address:	Prudential Buildings		
	Wine Street		
	Bristol		
	BS1 2PH		
Drawing:	Proposed Elevations		
Date:	06/10/22	Project No.	482237
Scale:	1:200@A3	Alt. Scale:	1:100@A1
Drawn:	SA	Checked:	PF
Dwg. No.	482237-04		Rev. A