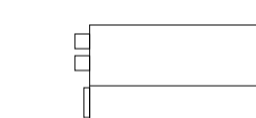
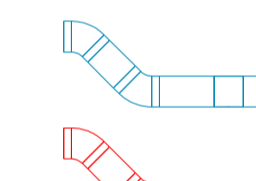




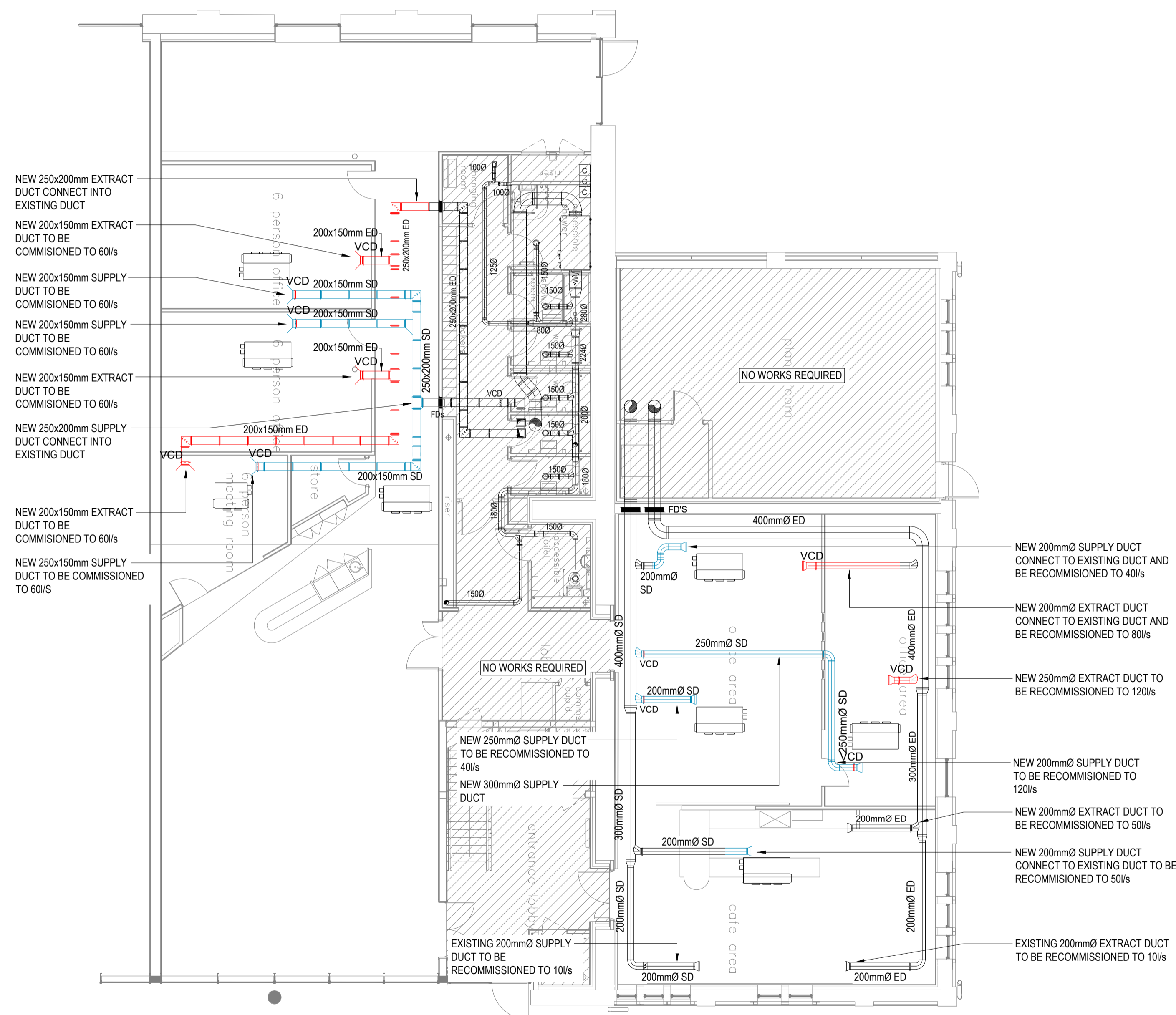
THIS DRAWING IS INDICATIVE AND REPRESENTS ONLY THE DESIGN INTENT, THE CONTRACTOR MUST PRODUCE FULLY CO-ORDINATED WORKING / INSTALLATION DRAWINGS AS REFERRED TO IN THE CONTRACT DOCUMENTATION

NOTES

- DO NOT SCALE FROM THIS DRAWING.
- DRAWING TO BE READ IN CONJUNCTION WITH SPECIFICATION, DOCUMENTATION, DRAWINGS & ALL RELEVANT BRITISH STANDARD DOCUMENTS.
- ALL DUCTWORK TO BE MANUFACTURED & INSTALLED TO BESA (FORMERLY HVCA) DW/144 SPECIFICATION FOR SHEET METAL DUCTWORK.
- ALL DUCTWORK, PLANT AND EQUIPMENT INDICATED SHALL BE PROVIDED WITH SUPPORTS, BRACKETRY AND SECONDARY STEELWORK AS REQUIRED, ALL TO BE DESIGNED, SUPPLIED AND INSTALLED BY THE CONTRACTOR UNLESS STATED OTHERWISE.
- ALL DUCTWORK PASSING THROUGH CAVITY BARRIERS TO INCORPORATE FIRE DAMPER WITH ACCESS DOOR ON BOTH SIDES OF BARRIER.
- ALL DUCTWORK TO BE INSULATED IN ACCORDANCE WITH BS 5442.
- ALL PLANT AND EQUIPMENT, DUCTWORK, GRILLES & PLENUM BOXES TO BE INDEPENDENTLY SUPPORTED FROM THE STRUCTURE.
- FLEXIBLE DUCTWORK SHOULD NOT EXCEED 500mm IN LENGTH ON FINAL CONNECTIONS TO EACH GRILLE/DIFFUSER.
- ALL DUCTWORK BENDS TO BE SWEEPED WHERE POSSIBLE. WHERE SWEEP BENDS CANNOT BE ACHIEVED DUE TO SPATIAL CONSTRAINTS, BENDS SHALL INCORPORATE TURNING VANES.
- ALL SERVICES SHOULD BE PROVIDED WITH IDENTIFICATION LABELS IN ACCORDANCE WITH BS 1710.
- ALL CONNECTIONS TO GRILLES TO BE AS PER MANUFACTURER'S STANDARD CONNECTION.
- CONTRACTOR TO ALLOW FOR DUCTWORK TRANSFORMATIONS TO SUIT PLANT AND EQUIPMENT CONNECTION SIZES.
- ALL FINAL DUCTWORK CONNECTIONS TO PLANT AND EQUIPMENT SHALL BE PROVIDED WITH MANUFACTURER'S ANTI-VIBRATION MOUNTING KIT.
- ALL TRICKLE VENTILATION BY ARCHITECT

LEGEND

-  FAN COIL UNIT.
-  NEW SUPPLY AND EXTRACT DUCTS ROUTED AS INDICATED.
-  EXTRACT GRILLE.
-  FRESH AIR SUPPLY GRILLE.



P05	ISSUED FOR TENDER	CI	RM	DR	09/23
P04	ISSUED FOR BUILDING WARRANT	RK	CI	DR	05/23
P03	ISSUED FOR TENDER	RK	CI	DR	05/23
P02	REVISED FOR INFORMATION	RK	CI	DR	04/23
P01	ISSUED FOR INFORMATION	RK	CI	DR	03/23
REV	DESCRIPTION	BY	CHK	APP	DATE

Project Status: **TENDER**

**h HARLEY HADDOW**  
 The Multi-disciplinary Engineering Consultancy  
 45 West Nile Street  
 Glasgow, G1 2PT  
 T 44 (0) 141 332 3031  
 E glas@harleyhaddow.com  
 Edinburgh | London | Glasgow  
 harleyhaddow.com  
 Association for Consultancy and Engineering Member Firm

Project: 309843  
**RED TREE @ EASTWORKS  
 UNIT 5 WORKS  
 PROPOSED FIT-OUT**  
 Drawing Title:  
**PROPOSED LAYOUT OF  
 GROUND FLOOR  
 MECHANICAL VENTILATION**  
 Scale @ A1    Date    Engineer  
 1:100    OCT 2022    RK  
 Drawing No.    Revision  
 309843-HAH-XX-00-D-M-05730    P05