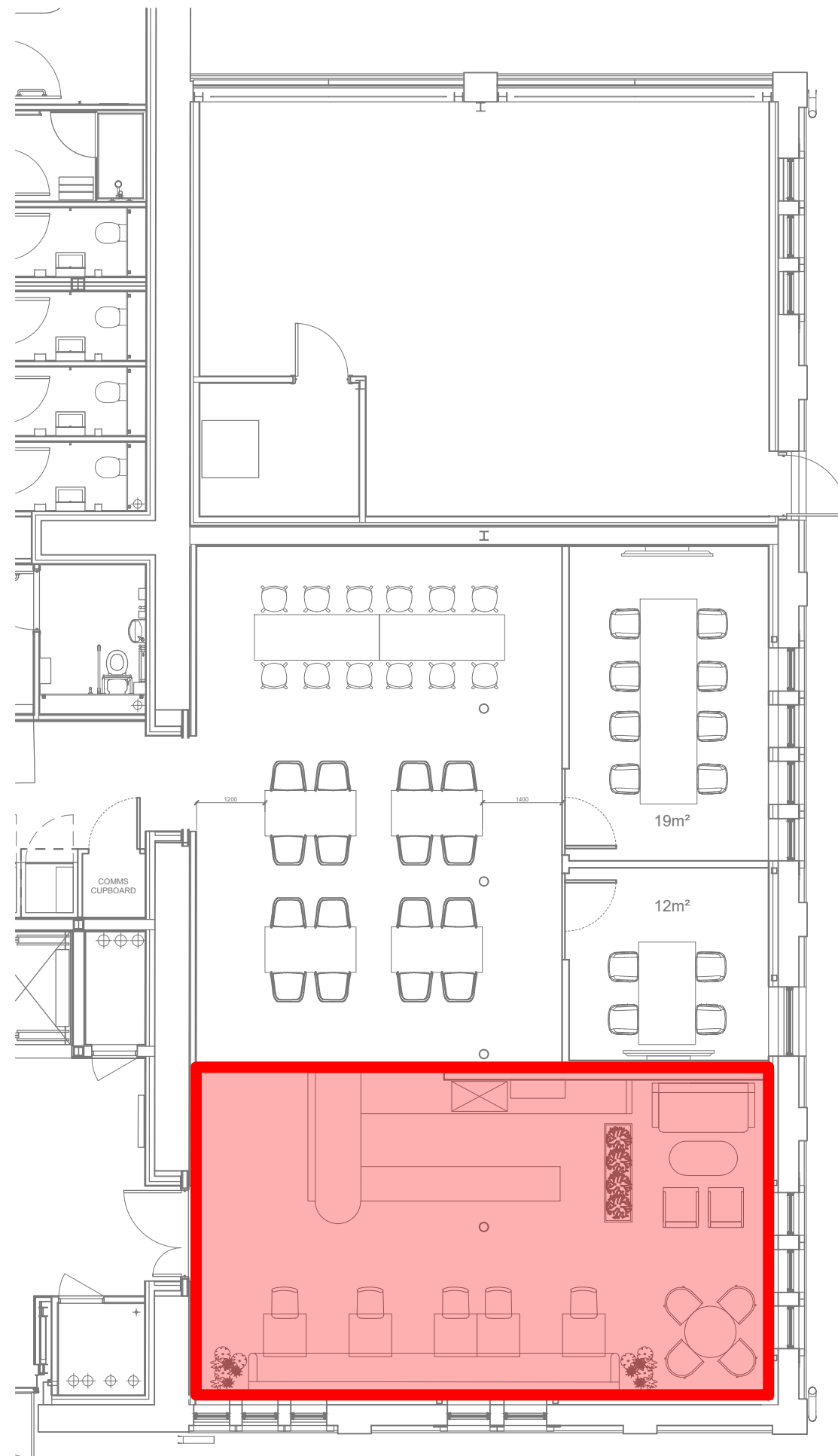
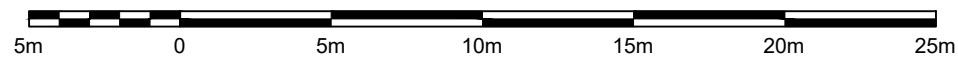


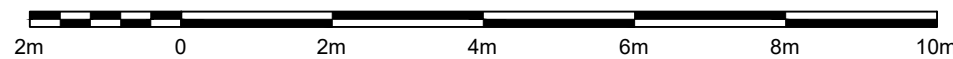
RTE GROUND FLOOR PLAN 1:250

1:250



RTE GROUND FLOOR PLAN PROPOSED CHANGE OF USE AREA 1:100

1:100



| Revision | Description | Date |
|----------|-------------|------|
|          |             |      |
|          |             |      |
|          |             |      |

CONTRACT TITLE

RTE PARTIAL CHANGE OF USE

RED TREE EASTWORKS PLAN

**Clyde Gateway**  
 Olympia  
 2 - 16 Orr Street  
 Glasgow, G40 2QH  
 Tel: 0141 276 1572



| Drawn By                                  | Checked By | Project No. | Scale       | Date          |
|---|------------|-------------|-------------|---------------|
| RC  | RC         |             | Varies @ A3 | November 2023 |
| Drawing Number: 002_Ground Floor Plan RTE |            |             |             |               |