

Level	Department	Number	Name	Area	Percentage
GF LEVEL					
FRONT OF HOUSE					
GF LEVEL	FRONT OF HOUSE	GF00	ENTRY	4.7 m ²	0.33%
GF LEVEL	FRONT OF HOUSE	GF01	FRONT OF HOUSE	473.4 m ²	33.57%
GF LEVEL	FRONT OF HOUSE	GF02	LOBBY 3	10.7 m ²	0.76%
GF LEVEL	FRONT OF HOUSE	GF03	ACC CHANGE	5.1 m ²	0.36%
GF LEVEL	FRONT OF HOUSE	GF04	CHANGE	2.2 m ²	0.16%
GF LEVEL	FRONT OF HOUSE	GF05	CHANGE	2.2 m ²	0.16%
GF LEVEL	FRONT OF HOUSE	GF06	LOBBY 1	11.6 m ²	0.83%
FRONT OF HOUSE: 7				510.0 m ²	36.16%
BACK OF HOUSE					
GF LEVEL	BACK OF HOUSE	GF08	ACC WC	4.1 m ²	0.29%
GF LEVEL	BACK OF HOUSE	GF09	STOCKROOM	52.2 m ²	3.70%
GF LEVEL	BACK OF HOUSE	GF10	JANITOR CLOSET	4.1 m ²	0.29%
GF LEVEL	BACK OF HOUSE	GF11	LOBBY 2	27.4 m ²	1.95%
BACK OF HOUSE: 4				87.8 m ²	6.23%
GF LEVEL: 11				597.8 m ²	42.39%
FF LEVEL					
FRONT OF HOUSE					
FF LEVEL	FRONT OF HOUSE	FF01	FRONT OF HOUSE	584.6 m ²	41.45%
FF LEVEL	FRONT OF HOUSE	FF02	LOBBY 4	9.9 m ²	0.70%
FF LEVEL	FRONT OF HOUSE	FF04	CHANGE	2.2 m ²	0.16%
FF LEVEL	FRONT OF HOUSE	FF05	ACC CHANGE	4.7 m ²	0.33%
FF LEVEL	FRONT OF HOUSE	FF06	LOBBY 5	6.0 m ²	0.43%
FRONT OF HOUSE: 5				607.4 m ²	43.07%
BACK OF HOUSE					
FF LEVEL	BACK OF HOUSE	FF03	CHANGE	2.2 m ²	0.16%
FF LEVEL	BACK OF HOUSE	FF07	WC	1.7 m ²	0.12%
FF LEVEL	BACK OF HOUSE	FF08	WC	1.7 m ²	0.12%
FF LEVEL	BACK OF HOUSE	FF09	WC	1.7 m ²	0.12%
FF LEVEL	BACK OF HOUSE	FF10	WC	3.3 m ²	0.23%
FF LEVEL	BACK OF HOUSE	FF11	LOBBY 6	14.9 m ²	1.06%
FF LEVEL	BACK OF HOUSE	FF12	STOCKROOM	81.1 m ²	5.75%
FF LEVEL	BACK OF HOUSE	FF13	LIFT	2.7 m ²	0.19%
FF LEVEL	BACK OF HOUSE	FF14	SERVER ROOM	15.5 m ²	1.10%
FF LEVEL	BACK OF HOUSE	FF15	LOBBY 7	Not Enclosed	0.00%
FF LEVEL	BACK OF HOUSE	FF16	STOCKROOM	70.8 m ²	5.02%
FF LEVEL	BACK OF HOUSE	FF17	LOBBY 8	2.5 m ²	0.18%
FF LEVEL	BACK OF HOUSE	FF18	WC LOBBY	6.9 m ²	0.49%
BACK OF HOUSE: 13				206.2 m ²	14.56%
FF LEVEL: 18				812.6 m ²	57.61%
Grand total				1410.4 m ²	100.00%

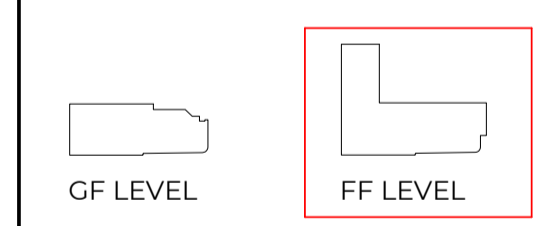
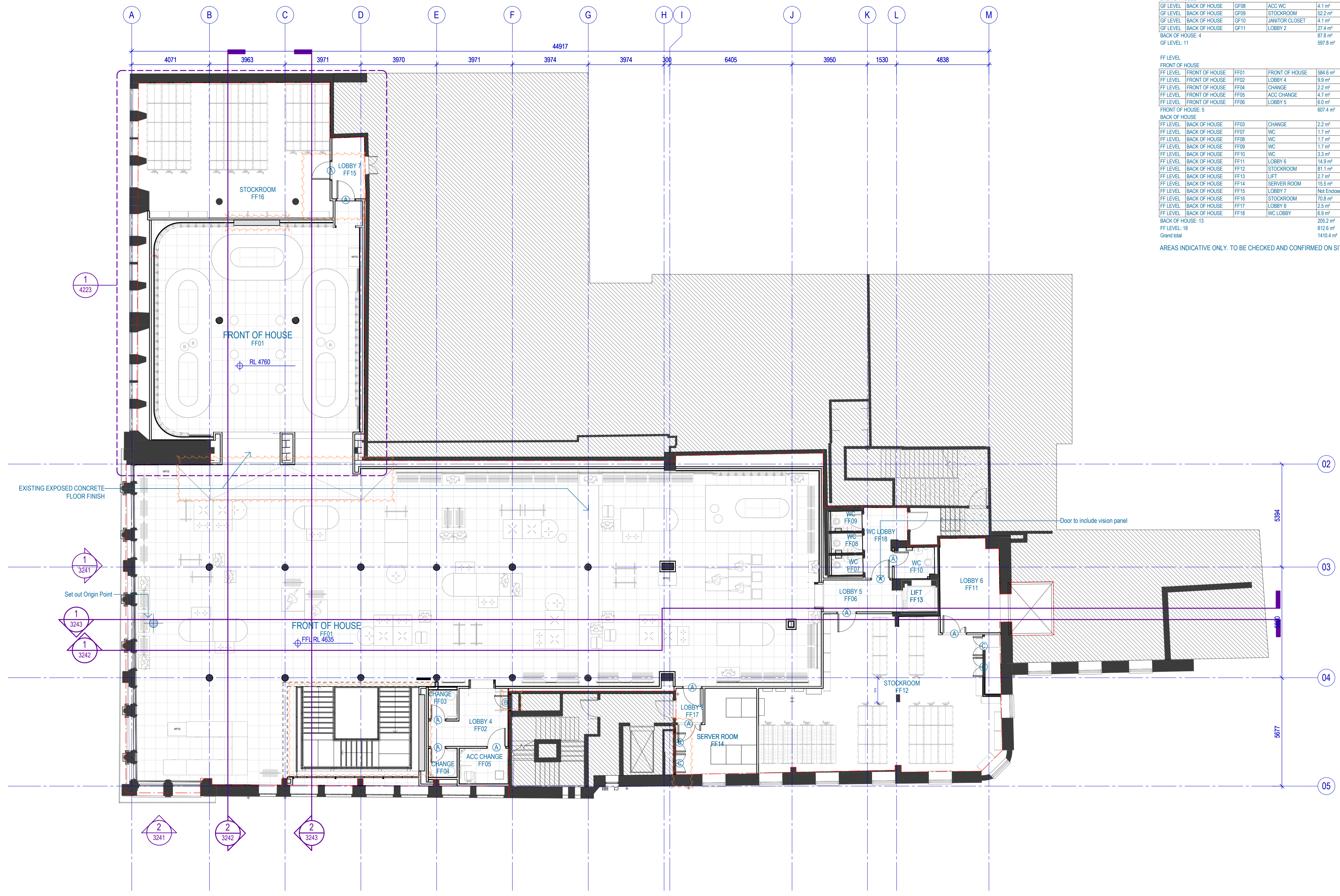
AREAS INDICATIVE ONLY. TO BE CHECKED AND CONFIRMED ON SITE

#	Status	Description	Date
A	For Review	STAGE 3	04/08/23
B	For Review	STAGE 4 - 90%	29/09/23
C	For Tender	STAGE 4 - 100%	23/10/23
D	For Tender	STAGE 4 - Revision	03/11/23

Notes
 Copyright © Woods Bagot 2018
 All Rights Reserved
 No material may be reproduced without prior permission
 Contractor must verify all dimensions on site before commencing work or preparing shop drawings.
 Do not scale drawings.

- LEGEND**
- IN ABEYANCE
 - TENANCY BOUNDARY LINE
 - EXISTING WALLS, FLOORS AND STRUCTURE
 - NEW WALLS, FLOORS AND STRUCTURE
 - OUT OF SCOPE
 - SPOT COORDINATE
 - FFL FINISH FLOOR LEVEL
 - DOOR DESIGNATOR TAG
 - ROOM NAME
 - ROOM LEVEL AND NUMBER
 - LL - LOWER LEVEL
 - UL - UPPER LEVEL
 - Movement Joints

NOTES
 General:
 1. THIS PLAN IS CURRENT AS PER REVISION DATE AND IS INDICATIVE ONLY
 2. ALL DIMENSIONS, RLS AND SERVICES LOCATIONS, BOTH VERTICAL AND HORIZONTAL, SHOWN ON DRAWINGS MUST BE CONFIRMED ON SITE PRIOR TO COMMENCING ANY WORKS. ANY DISCREPANCIES MUST BE ADVISED IMMEDIATELY.
 3. TO BE READ IN CONJUNCTION WITH CONSULTANT DRAWING PACKAGES
 4. UNLESS OTHERWISE NOTED, FFE INDICATIVE ONLY. REFER TO CONSULTANT LAYOUT AND SPECIFICATION.



Project
NIKE GLASGOW

Client
NIKE

Issuer
W-B
WOODS BAGOT

Project number
441047

Size check
25mm

Checked
GV

Approved
AL

Sheet size
A1

Scale
1:100

Sheet title
Floor Plan - General Arrangement - First Floor Level - Proposed

Sheet number
A-2221

Revision
D

Status
FOR TENDER

1 Floor Plan - General Arrangement - First Floor Level - Proposed
 SCALE 1:100