

Notes:

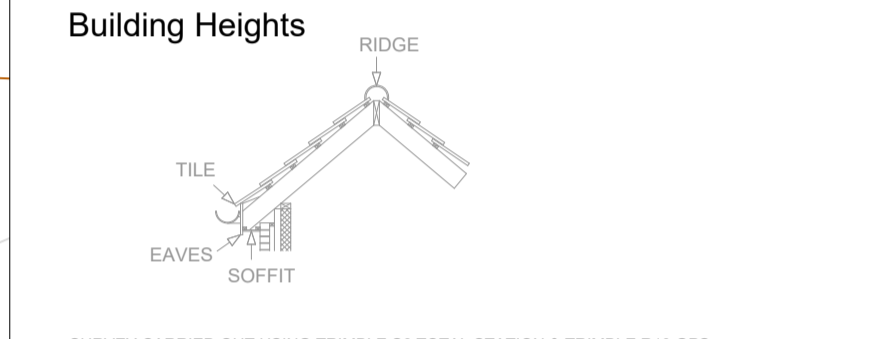
AV	Air Valve	FH	Fire Hydrant	SP	Sign Post
BB	Bottom Bank	FP	Footpath	STAY	Stay
BH	Bore Hole	G	Gully Grate	SV	Sluice Valve
BL	Li Bollard	GV	Gas Valve	TAC	Tactile Paving
BOL	Bollard	Hedge	Top Bank	TB	Top Bank
BN	Bin	IC	Inspection Cover	TBOX	Telephone Box
BS	Bus Stop	IL	Invert Level	TL	Traffic Light
Bushes	Bush	KO	Kerb Outlet	TOK	Top Of Kerb
BT	BT Box	LP	Lamp Post	TP	Telegraph Pole
CAB	Cabinet	MH	Manhole	TRK	Track
CHNL	Channel	MP	Marker Post	TS	Traffic Sign MH
CL	Centreline	NB	Name Board	VENT	Vent
CONC	Concrete	P/W	Partition Wall	W	Water Cover
COL	Column	PB	Post Box	WL	White Line
DB	Ditch Bottom	PM	Parking Meter	WO	Wash Out
DCHNL	Drainage Channel	PO	Post	YL	Yellow Line
Door	Door	RE	Rodding Eye		
EEB	Electric MH Cover	Ridge	Ridge Level		
EP	Electric Pole	RP	Reflector Post		
ER	Earth Road	RS	Road Sign		
ET	EP Transformer	SETTS	Gravel Sets		
Feeder	Feeder Pillar	SF	Safety Fence		
FCB	Close Boarded			CS	Control Station
FCL	Chain Link			Column	Column
FHD	Hoarding			K.X.S	Floor to Ceiling Height
FHR	Hoops Fence			K.X.S. R.C.	Floor to False Ceiling Height
FPL	Pallisade				
FPR	Post & Rail				
FPW	Post & Wire				
RAIL	Railings				

Features

Fences	FCB 1.0m	
Walls	Wad 1.2m	
Hedges	Hedge 1.2m	Average root line shown.
Overhead Line	OKL	Indicative position of cables.

Services

Foul Sewers	0.2250	0.750m	Pipe position and alignment is indicative only.
Storm Sewers	0.3750	0.750m	



SURVEY CARRIED OUT USING TRIMBLE S6 TOTAL STATION & TRIMBLE R10 GPS.

THE SURVEY HAS BEEN ACCURATELY POSITIONED ON THE ORDNANCE SURVEY NATIONAL GRID SYSTEM USING GPS OBSERVATIONS TO THE OS ACTIVE NETWORK AND AND THE LATEST ORDNANCE SURVEY TRANSFORMATION (OSTN15/OSGM15).

LOCAL SCALE FACTOR HAS BEEN REMOVED TO TRANSFORM THE SURVEY TO A FLAT EARTH GRID (SCALE FACTOR 1.00000).

ALL LEVELS RELATE TO ORDNANCE SURVEY DATUM (NEWLYN). VERTICAL CONTROL HAS BEEN ESTABLISHED USING GPS OBSERVATIONS TO THE OS ACTIVE NETWORK AND AND THE LATEST ORDNANCE SURVEY TRANSFORMATION (OSTN15/OSGM15).

ALL DIMENSIONS ARE IN METRES UNLESS OTHERWISE STATED.

ANY CRITICAL DIMENSIONS AND MEASUREMENTS SHOULD BE BASED ON THE ORIGINAL DIGITAL DATA AND CONFIRMED WITH BB SURVEYS LTD.

ANY ERRORS SHOULD BE NOTIFIED TO BB SURVEYS LTD.

NO ATTEMPT HAS BEEN MADE TO ENTER ANY CONFINED SPACES ON THIS SITE. WE HAVE MEASURED INVERT DEPTHS, ESTIMATED PIPE SIZES AND SHOWN THE DIRECTION OF FLOW ONLY WHERE DRAIN RUNS ARE ACTIVE AT THE TIME OF SURVEY. INSPECTION COVERS WHICH WE WERE UNABLE TO LIFT BY MANUAL METHODS ARE DENOTED AS MH (U/L). WE DID NOT QUOTE FOR THE USE OF HYDRAULIC LIFTING EQUIPMENT.

DRAINAGE RUNS BETWEEN INSPECTION COVERS HAVE NOT BEEN INVESTIGATED. ANY SHOWN ARE ESTIMATED AND NOT CONFIRMED. ALL DRAINAGE RUNS SHOULD BE PROVIDED BY EYE TRACING AND IF NECESSARY BY RADIO DETECTION METHODS PRIOR TO ANY DESIGN WORK. ALL PIPE SIZES AND CONNECTIONS SHOULD ALSO BE CONFIRMED WITH YOUR LOCAL DRAINAGE AUTHORITY PRIOR TO ANY DESIGN WORK.

THERE MAY BE INSPECTION COVERS ON SITE WHICH WERE NOT VISIBLE AT THE TIME OF SURVEY. THEY MAY HAVE BEEN BURIED OR COVERED BY VEGETATION. YOU SHOULD CONSULT YOUR LOCAL DRAINAGE AUTHORITY OR COMMISSION A CCTV DRAINAGE SURVEY TO ENSURE THAT YOU LOCATE ANY MISSING COVERS OR DRAINAGE RUNS.

-	06.09.23	BB	First Issue
---	----------	----	-------------

REV	Date	Created By	Comments
Scale at A1		Project Number	2219-4125

Drawing Status

<input checked="" type="checkbox"/>	Existing Topographic Survey
<input type="checkbox"/>	As Built Survey
<input type="checkbox"/>	For Information

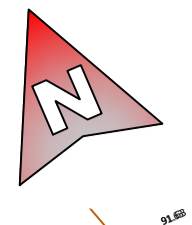


**1 Chestnut Place, Cringleford
Norwich, Norfolk NR4 7BD**
t: 01603 507917
m: 07786 388175
e: barry@bbsurveys.co.uk



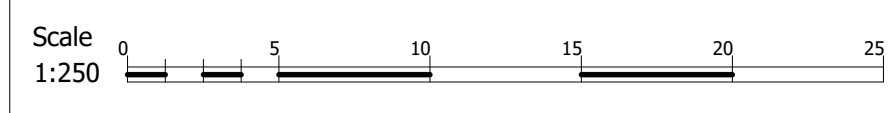
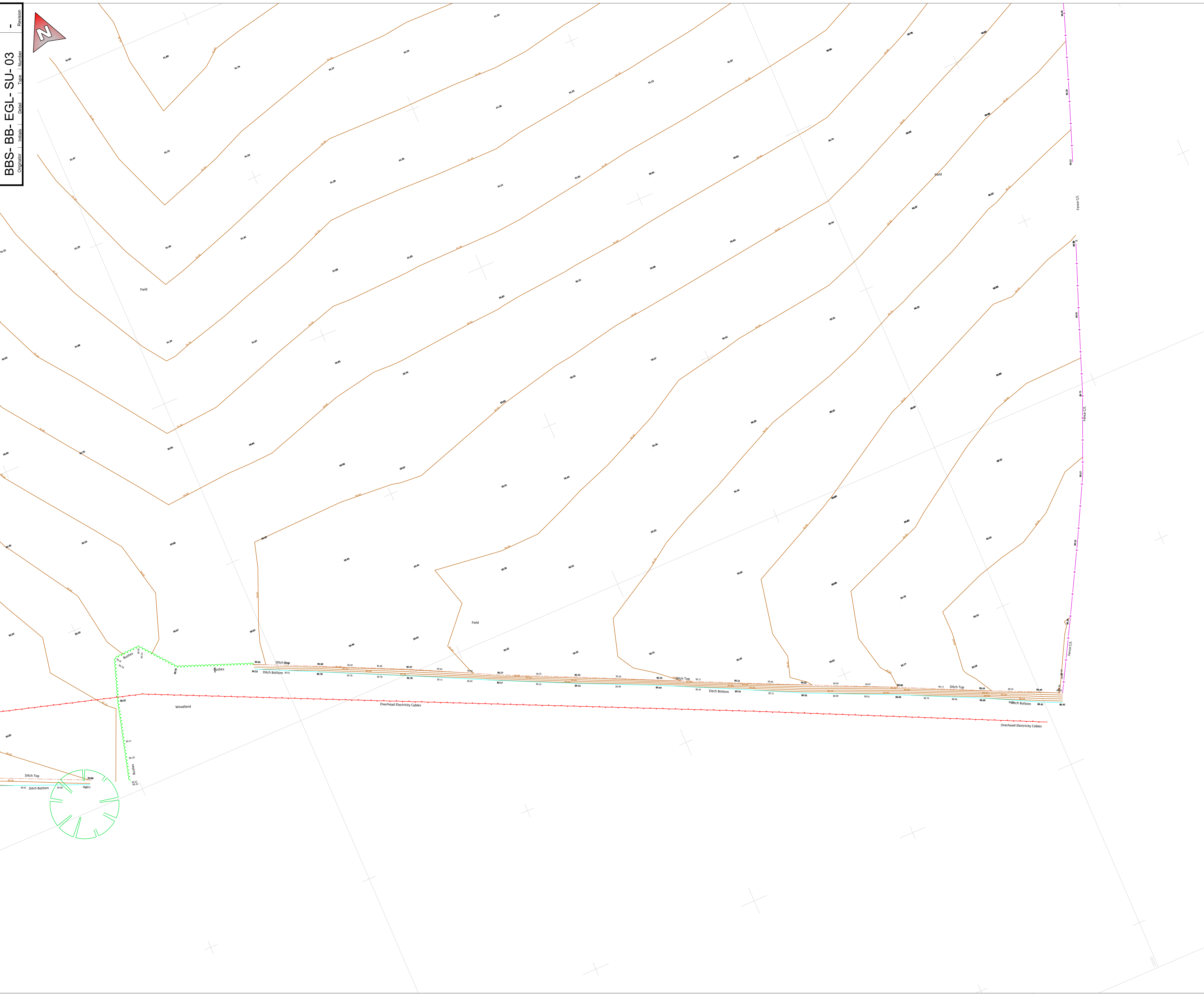
Project
**High Cross Ware
 Update 28/08/23**

Title
**Existing Ground Level Survey
 Sheet 1**



Note: The Property Of This Drawing Is Vested In BB SURVEYS LTD And Must Not Be Copied Or Reproduced In Any Way Without Their Written Consent

File Path: E:\Workarea\Scott Properties\2219-4125 - Scott Properties - High Cross Ware - Update 28_08_23.dwg
Plot Date: 07 September 2023 Plot Style: BB Surveys Sld.ctb Saved By: Barry on 07 September 2023



Notes:

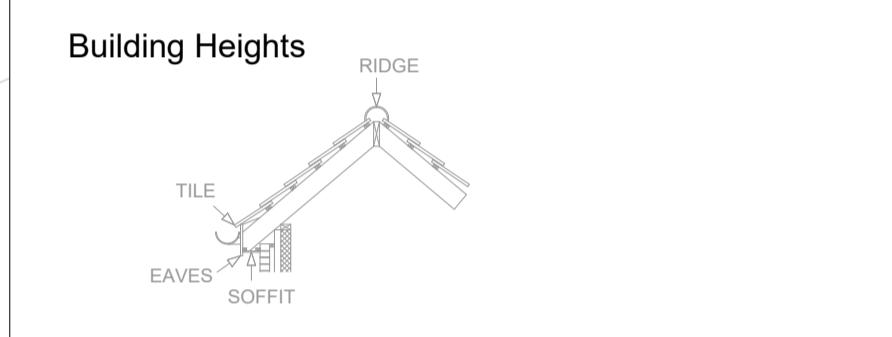
AV	Air Valve	FH	Fire Hydrant	SP	Sign Post
BB	Bottom Bank	FP	Footpath	STAY	Stay
BH	Bore Hole	G	Gully Grate	SV	Sluice Valve
BL	LiI Bollard	GV	Gas Valve	TAC	Tactile Paving
BOL	Bollard	H	Hedge	TB	Top Bank
BN	Bin	IC	Inspection Cover	TBOX	Telephone Box
BS	Bus Stop	IL	Invert Level	TL	Traffic Light
Bushes	Bush	KO	Kerb Outlet	TOK	Top Of Kerb
BT	BT Box	LP	Lamp Post	TP	Telegraph Pole
CAB	Cabinet	MH	Manhole	TRK	Track
CHNL	Channel	MP	Marker Post	TS	Traffic Sign/MH
CL	Centreline	NB	Name Board	VENT	Vent
CONC	Concrete	P/W	Partition Wall	W	Water Cover
COL	Column	PB	Post Box	WL	White Line
DB	Ditch Bottom	PM	Parking Meter	WO	Wash Out
DCHNL	Drainage Channel	PO	Post	YL	Yellow Line
Door	Door	RE	Rodding Eye		
EEB	Electric MH Cover	R	Ridge Level		
EP	Electric Pole	RP	Reflector Post		
ER	Earth Road	RS	Road Sign		
ET	EP Transformer	SETTS	Concrete Setts		
Feeder	Feeder Pillar	SF	Safety Fence		

Features

Fences	FCB 1.0m	Control Station
Walls	Wad 1.2m	Column
Hedges	Hedge 1.2m	Floor to Ceiling Height
Overhead Line	OKL	Floor to False Ceiling Height

Services

Foul Sewers	0.2250	0.750m	Pipe position and alignment is indicative only.
Storm Sewers	0.3750	0.750m	



SURVEY CARRIED OUT USING TRIMBLE S6 TOTAL STATION & TRIMBLE R10 GPS
 THE SURVEY HAS BEEN ACCURATELY POSITIONED ON THE ORDNANCE SURVEY NATIONAL GRID SYSTEM USING GPS OBSERVATIONS TO THE OS ACTIVE NETWORK AND THE LATEST ORDNANCE SURVEY TRANSFORMATION (OSTN15/OSGM15)
 LOCAL SCALE FACTOR HAS BEEN REMOVED TO TRANSFORM THE SURVEY TO A FLAT EARTH GRID (SCALE FACTOR 1.00000)
 ALL LEVELS RELATE TO ORDNANCE SURVEY DATUM (NEWLYN). VERTICAL CONTROL HAS BEEN ESTABLISHED USING GPS OBSERVATIONS TO THE OS ACTIVE NETWORK AND THE LATEST ORDNANCE SURVEY TRANSFORMATION (OSTN15/OSGM15)
 ALL DIMENSIONS ARE IN METRES UNLESS OTHERWISE STATED.
 ANY CRITICAL DIMENSIONS AND MEASUREMENTS SHOULD BE BASED ON THE ORIGINAL DIGITAL DATA AND CONFIRMED WITH BB SURVEYS LTD.
 ANY ERRORS SHOULD BE NOTIFIED TO BB SURVEYS LTD.
 NO ATTEMPT HAS BEEN MADE TO ENTER ANY CONFINED SPACES ON THIS SITE. WE HAVE MEASURED INVERT DEPTHS, ESTIMATED PIPE SIZES AND SHOWN THE DIRECTION OF FLOW ONLY WHERE DRAIN RUNS ARE ACTIVE AT THE TIME OF SURVEY. INSPECTION COVERS WHICH WE WERE UNABLE TO LIFT BY MANUAL METHODS ARE DENOTED AS MH (U/L). WE DID NOT QUOTE FOR THE USE OF HYDRAULIC LIFTING EQUIPMENT.
 DRAINAGE RUNS BETWEEN INSPECTION COVERS HAVE NOT BEEN INVESTIGATED. ANY SHOWN ARE ESTIMATED AND NOT CONFIRMED. ALL DRAINAGE RUNS SHOULD BE PROVIDED BY EYE TRACING AND IF NECESSARY BY RADIO DETECTION METHODS PRIOR TO ANY DESIGN WORK. ALL PIPE SIZES AND CONNECTIONS SHOULD ALSO BE CONFIRMED WITH YOUR LOCAL DRAINAGE AUTHORITY PRIOR TO ANY DESIGN WORK.
 THERE MAY BE INSPECTION COVERS ON SITE WHICH WERE NOT VISIBLE AT THE TIME OF SURVEY. THEY MAY HAVE BEEN BURIED OR COVERED BY VEGETATION. YOU SHOULD CONSULT YOUR LOCAL DRAINAGE AUTHORITY OR COMMISSION A CCTV DRAINAGE SURVEY TO ENSURE THAT YOU LOCATE ANY MISSING COVERS OR DRAINAGE RUNS.

-	06.09.23	BB	First Issue
REV	Date	Created By	Comments
Scale at A1	Project Number		
1:250	2219-4125		

Drawing Status

<input checked="" type="checkbox"/>	Existing Topographic Survey
<input type="checkbox"/>	As Built Survey
<input type="checkbox"/>	For Information

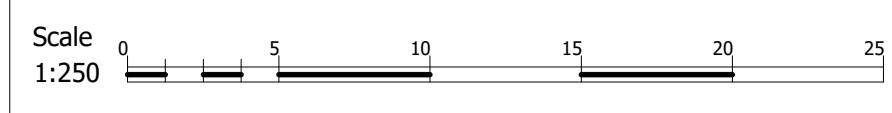
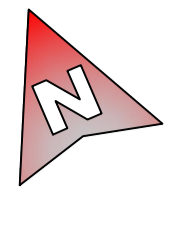


**1 Chestnut Place, Cringleford
 Norwich, Norfolk NR4 7BD**
 t: 01603 507917
 m: 07786 388175
 e: barry@bbsurveys.co.uk



**High Cross Ware
 Update 28/08/23**

**Existing Ground Level Survey
 Sheet 3**



Notes:

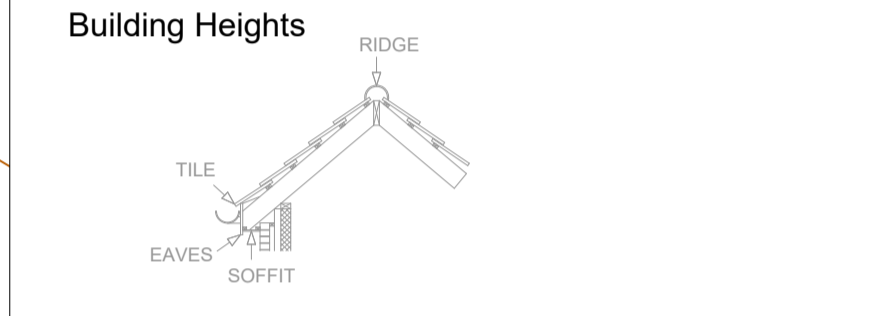
AV	Air Valve	FH	Fire Hydrant	SP	Sign Post
BB	Bottom Bank	FP	Footpath	STAY	Stay
BH	Bore Hole	G	Gully Grate	SV	Sluice Valve
BL	Li Bollard	GV	Gas Valve	TAC	Tactile Paving
BOL	Bollard	Hedge	Hedge	TB	Top Bank
BN	Bin	IC	Inspection Cover	TBOX	Telephone Box
BS	Bus Stop	IL	Invert Level	TL	Traffic Light
Bushes	Bush	KO	Kerb Outlet	TOK	Top Of Kerb
BT	BT Box	LP	Lamp Post	TP	Telegraph Pole
CAB	Cabinet	MH	Manhole	TRK	Track
CHNL	Channel	MP	Marker Post	TS	Traffic Sign MH
CL	Centreline	NB	Name Board	VENT	Vent
CONC	Concrete	P/W	Partition Wall	W	Water Cover
COL	Column	PB	Post Box	WL	White Line
DB	Ditch Bottom	PM	Parking Meter	WO	Wash Out
DCHNL	Drainage Channel	PO	Post	YL	Yellow Line
Door	Door	RE	Rodding Eye		
EEB	Electric MH Cover	Ridge	Ridge Level		
EP	Electric Pole	RP	Reflector Post		
ER	Earth Road	RS	Road Sign		
ET	EP Transformer	SETTS	Gravel Sets		
Feeder	Feeder Pillar	SF	Safety Fence		

Features

Fences	FCB 1.0m	Control Station
Walls	Wal 1.2m	Column
Hedges	Hedge 1.2m	Floor to Ceiling Height
Overhead Line	OKL	Floor to False Ceiling Height

Services

Foul Sewers	0.2250	0.750m	Pipe position and alignment is indicative only.
Storm Sewers	0.3750	0.750m	



SURVEY CARRIED OUT USING TRIMBLE S6 TOTAL STATION & TRIMBLE R10 GPS.
 THE SURVEY HAS BEEN ACCURATELY POSITIONED ON THE ORDINANCE SURVEY NATIONAL GRID SYSTEM USING GPS OBSERVATIONS TO THE OS ACTIVE NETWORK AND THE LATEST ORDINANCE SURVEY TRANSFORMATION (OSTN15/OSGM15).
 LOCAL SCALE FACTOR HAS BEEN REMOVED TO TRANSFORM THE SURVEY TO A FLAT EARTH GRID (SCALE FACTOR 1.00000).
 ALL LEVELS RELATE TO ORDINANCE SURVEY DATUM (NEWLYN). VERTICAL CONTROL HAS BEEN ESTABLISHED USING GPS OBSERVATIONS TO THE OS ACTIVE NETWORK AND THE LATEST ORDINANCE SURVEY TRANSFORMATION (OSTN15/OSGM15).
 ALL DIMENSIONS ARE IN METRES UNLESS OTHERWISE STATED.
 ANY CRITICAL DIMENSIONS AND MEASUREMENTS SHOULD BE BASED ON THE ORIGINAL DIGITAL DATA AND CONFIRMED WITH BBS SURVEYS LTD.
 ANY ERRORS SHOULD BE NOTIFIED TO BBS SURVEYS LTD.
 NO ATTEMPT HAS BEEN MADE TO ENTER ANY CONFINED SPACES ON THIS SITE. WE HAVE MEASURED INVERT DEPTHS, ESTIMATED PIPE SIZES AND SHOWN THE DIRECTION OF FLOW ONLY WHERE DRAIN RUNS ARE ACTIVE AT THE TIME OF SURVEY. INSPECTION COVERS WHICH WE WERE UNABLE TO LIFT BY MANUAL METHODS ARE DENOTED AS MH (U/L). WE DID NOT QUOTE FOR THE USE OF HYDRAULIC LIFTING EQUIPMENT.
 DRAINAGE RUNS BETWEEN INSPECTION COVERS HAVE NOT BEEN INVESTIGATED. ANY SHOWN ARE ESTIMATED AND NOT CONFIRMED. ALL DRAINAGE RUNS SHOULD BE PROVED BY EYE TRACING AND IF NECESSARY BY RADIO DETECTION METHODS PRIOR TO ANY DESIGN WORK. ALL PIPE SIZES AND CONNECTIONS SHOULD ALSO BE CONFIRMED WITH YOUR LOCAL DRAINAGE AUTHORITY PRIOR TO ANY DESIGN WORK.
 THERE MAY BE INSPECTION COVERS ON SITE WHICH WERE NOT VISIBLE AT THE TIME OF SURVEY. THEY MAY HAVE BEEN BURIED OR COVERED BY VEGETATION. YOU SHOULD CONSULT YOUR LOCAL DRAINAGE AUTHORITY OR COMMISSION A CCTV DRAINAGE SURVEY TO ENSURE THAT YOU LOCATE ANY MISSING COVERS OR DRAINAGE RUNS.

-	06.09.23	BB	First Issue
---	----------	----	-------------

REV	Date	Created By	Comments
Scale at A1		Project Number	
1:250		2219-4125	

Drawing Status

<input checked="" type="checkbox"/>	Existing Topographic Survey
<input type="checkbox"/>	As Built Survey
<input type="checkbox"/>	For Information

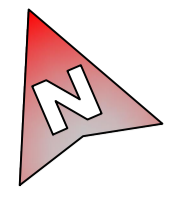


**1 Chestnut Place, Cringleford
 Norwich, Norfolk NR4 7BD**
 t: 01603 507917
 m: 07786 388175
 e: barry@bbsurveys.co.uk



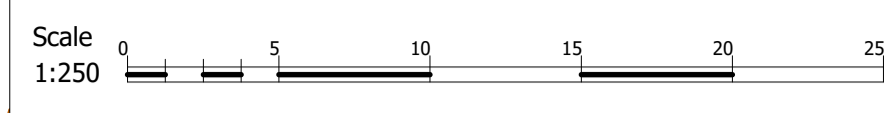
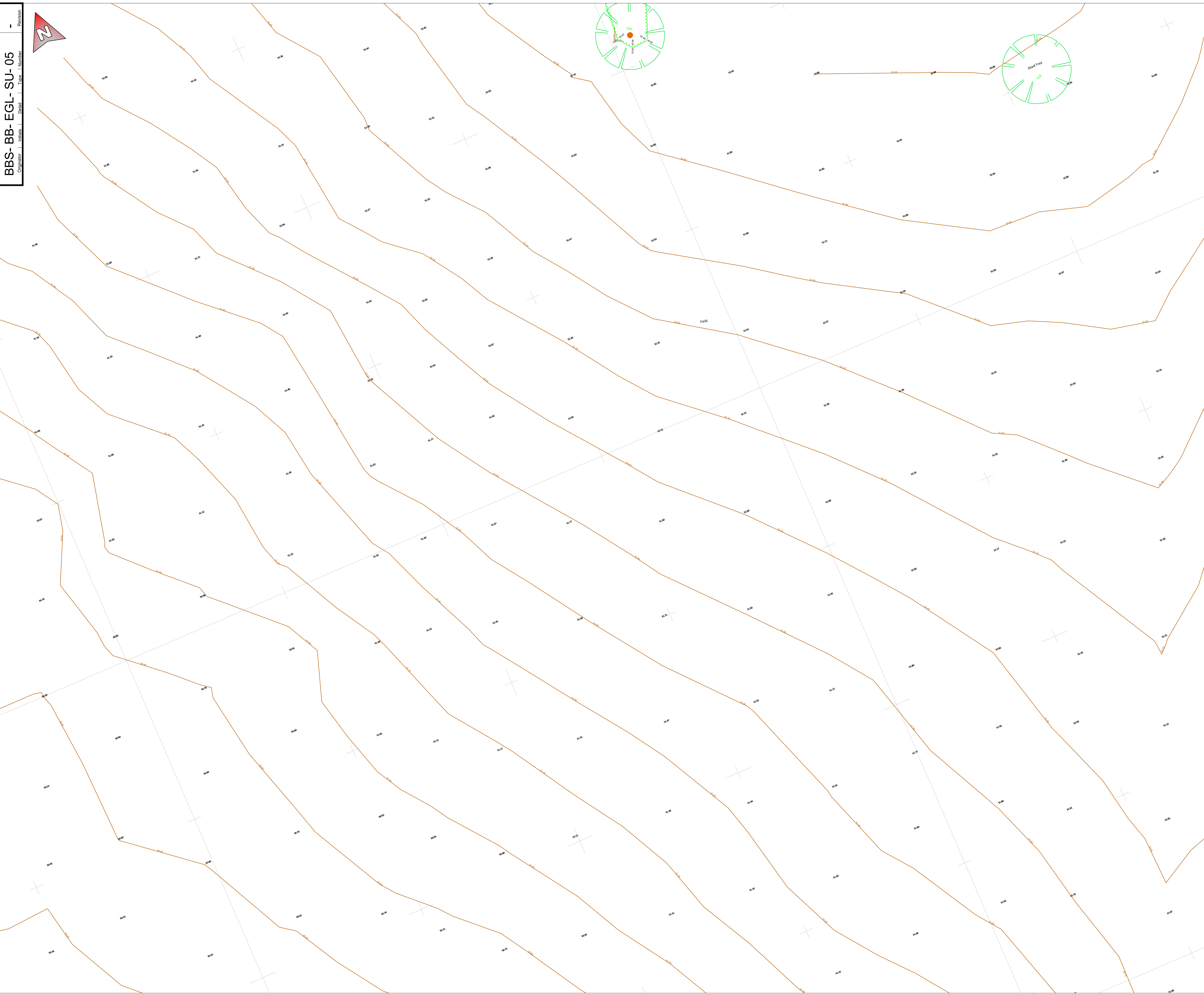
**High Cross Ware
 Update 28/08/23**

**Existing Ground Level Survey
 Sheet 4**



Note: The Property Of This Drawing Is Vested In BB SURVEYS LTD And Must Not Be Copied Or Reproduced In Any Way Without Their Written Consent

File Path: E:\Workarea\Scott Properties\2114-125 - Scott Properties - High Cross Ware Additional Topo\AUCAD\2114-125-SU01-15 - Scott Properties - High Cross Ware - Update 28_08_23.dwg
Plot Date: 07 September 2023 Plot Style: BB Surveys Sld.ctb Saved By: Barry on 07 September 2023



Notes:

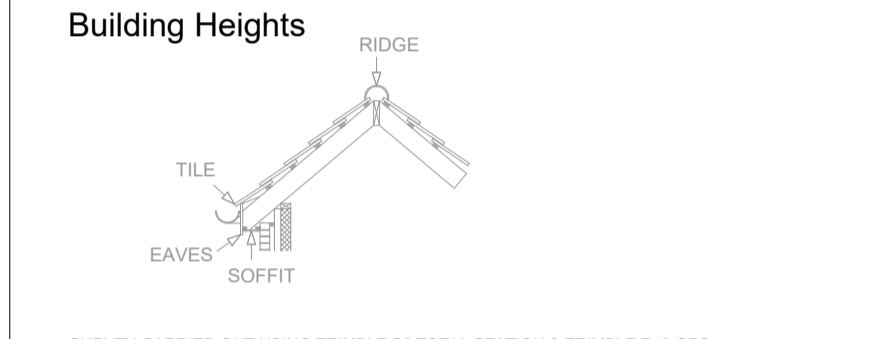
AV	Air Valve	FH	Fire Hydrant	SP	Sign Post
BB	Bottom Bank	FP	Footpath	STAY	Stay
BH	Bore Hole	G	Gully Grate	SV	Sluice Valve
BL	Li Bollard	GV	Gas Valve	TAC	Tactile Paving
BOL	Bollard	H	Hedge	TB	Top Bank
BN	Bin	IC	Inspection Cover	TBOX	Telephone Box
BS	Bus Stop	IL	Invert Level	TL	Traffic Light
Bushes	Bush	KO	Kerb Outlet	TOK	Top Of Kerb
BT	BT Box	LP	Lamp Post	TP	Telegraph Pole
CAB	Cabinet	MH	Manhole	TRK	Track
CHNL	Channel	MP	Marker Post	TS	Traffic Sign MH
CL	Centreline	NB	Name Board	VENT	Vent
CONC	Concrete	P/W	Partition Wall	W	Water Cover
COL	Column	PB	Post Box	WL	White Line
DB	Ditch Bottom	PM	Parking Meter	WO	Wash Out
DCHNL	Drainage Channel	PO	Post	YL	Yellow Line
Door	Door	RE	Rodding Eye		
EEB	Electric MH Cover	R	Ridge Level		
EP	Electric Pole	RP	Reflector Post		
ER	Earth Road	RS	Road Sign		
ET	EP Transformer	SETTS	Gravel Setts		
Feeder	Feeder Pillar	SF	Safety Fence		

Features

Fences	FCB 1.0m	Control Station
Walls	Wall 1.2m	Column
Hedges	Hedge 1.2m	Floor to Ceiling Height
Overhead Line	Overhead Line	Floor to False Ceiling Height

Services

Foul Sewers	0.2250	0.750m	Pipe position and alignment is indicative only.
Storm Sewers	0.3750	0.750m	



SURVEY CARRIED OUT USING TRIMBLE S6 TOTAL STATION & TRIMBLE R10 GPS
 THE SURVEY HAS BEEN ACCURATELY POSITIONED ON THE ORDINANCE SURVEY NATIONAL GRID SYSTEM USING GPS OBSERVATIONS TO THE OS ACTIVE NETWORK AND AND THE LATEST ORDINANCE SURVEY TRANSFORMATION (OSTN15/OSGM15)
 LOCAL SCALE FACTOR HAS BEEN REMOVED TO TRANSFORM THE SURVEY TO A FLAT EARTH GRID (SCALE FACTOR 1.00000)
 ALL LEVELS RELATE TO ORDINANCE SURVEY DATUM (NEWLYN). VERTICAL CONTROL HAS BEEN ESTABLISHED USING GPS OBSERVATIONS TO THE OS ACTIVE NETWORK AND AND THE LATEST ORDINANCE SURVEY TRANSFORMATION (OSTN15/OSGM15)
 ALL DIMENSIONS ARE IN METRES UNLESS OTHERWISE STATED.
 ANY CRITICAL DIMENSIONS AND MEASUREMENTS SHOULD BE BASED ON THE ORIGINAL DIGITAL DATA AND CONFIRMED WITH BB SURVEYS LTD.
 ANY ERRORS SHOULD BE NOTIFIED TO BB SURVEYS LTD.
 NO ATTEMPT HAS BEEN MADE TO ENTER ANY CONFINED SPACES ON THIS SITE. WE HAVE MEASURED INVERT DEPTHS, ESTIMATED PIPE SIZES AND SHOWN THE DIRECTION OF FLOW ONLY WHERE DRAIN RUNS ARE ACTIVE AT THE TIME OF SURVEY. INSPECTION COVERS WHICH WE WERE UNABLE TO LIFT BY MANUAL METHODS ARE DENOTED AS MH (U/L). WE DID NOT QUOTE FOR THE USE OF HYDRAULIC LIFTING EQUIPMENT.
 DRAINAGE RUNS BETWEEN INSPECTION COVERS HAVE NOT BEEN INVESTIGATED. ANY SHOWN ARE ESTIMATED AND NOT CONFIRMED. ALL DRAINAGE RUNS SHOULD BE PROVIDED BY EYE TRACING AND IF NECESSARY BY RADIO DETECTION METHODS PRIOR TO ANY DESIGN WORK. ALL PIPE SIZES AND CONNECTIONS SHOULD ALSO BE CONFIRMED WITH YOUR LOCAL DRAINAGE AUTHORITY PRIOR TO ANY DESIGN WORK.
 THERE MAY BE INSPECTION COVERS ON SITE WHICH WERE NOT VISIBLE AT THE TIME OF SURVEY. THEY MAY HAVE BEEN BURIED OR COVERED BY VEGETATION. YOU SHOULD CONSULT YOUR LOCAL DRAINAGE AUTHORITY OR COMMISSION A CCTV DRAINAGE SURVEY TO ENSURE THAT YOU LOCATE ANY MISSING COVERS OR DRAINAGE RUNS.

-	06.09.23	BB	First Issue
---	----------	----	-------------

REV	Date	Created By	Comments
Scale at A1		Project Number	
1:250		2219-4125	

Drawing Status

<input checked="" type="checkbox"/>	Existing Topographic Survey
<input type="checkbox"/>	As Built Survey
<input type="checkbox"/>	For Information

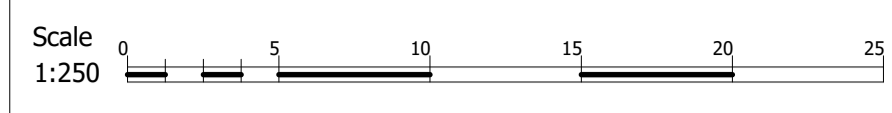
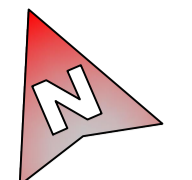


**1 Chestnut Place, Cringleford
 Norwich, Norfolk NR4 7BD**
 t: 01603 507917
 m: 07786 388175
 e: barry@bbsurveys.co.uk



**High Cross Ware
 Update 28/08/23**

**Existing Ground Level Survey
 Sheet 5**



Notes:

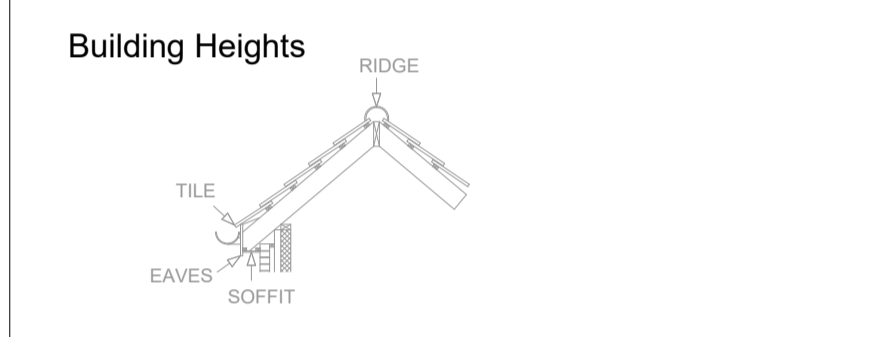
AV	Air Valve	FH	Fire Hydrant	SP	Sign Post
BB	Bottom Bank	FP	Footpath	STAY	Stay
BH	Bore Hole	G	Gully Grate	SV	Sluice Valve
BL	Li Bollard	GV	Gas Valve	TAC	Tactile Paving
BOL	Bollard	H	Hedge	TB	Top Bank
BN	Bin	IC	Inspection Cover	TBOX	Telephone Box
BS	Bus Stop	IL	Invert Level	TL	Traffic Light
Bushes	Bush	KO	Kerb Outlet	TOK	Top Of Kerb
BT	BT Box	LP	Lamp Post	TP	Telegraph Pole
CAB	Cabinet	MH	Manhole	TRK	Track
CHNL	Channel	MP	Marker Post	TS	Traffic Sign MH
CL	Centreline	NB	Name Board	VENT	Vent
CONC	Concrete	PW	Partition Wall	W	Water Cover
COL	Column	PB	Post Box	WL	White Line
DB	Ditch Bottom	PM	Parking Meter	WO	Wash Out
DCHNL	Drainage Channel	PO	Post	YL	Yellow Line
Door	Door	RE	Rodding Eye		
EEB	Electric MH Cover	R	Ridge Level		
EP	Electric Pole	RP	Reflector Post		
ER	Earth Road	RS	Road Sign		
ET	EP Transformer	SETTS	Grass Sets		
Feeder	Feeder Pillar	SF	Safety Fence		

Features

Fences	FCB 1.0m	Control Station
Walls	Wad 1.2m	Column
Hedges	Hedge 1.2m	Floor to Ceiling Height
Overhead Line	OKL	Floor to False Ceiling Height

Services

Four Sewers	0.2250	0.1500	0.0750	0.0375	Pipe position and alignment is indicative only.
Storm Sewers	0.3750	0.5000			



SURVEY CARRIED OUT USING TRIMBLE S6 TOTAL STATION & TRIMBLE R10 GPS.

THE SURVEY HAS BEEN ACCURATELY POSITIONED ON THE ORDNANCE SURVEY NATIONAL GRID SYSTEM USING GPS OBSERVATIONS TO THE OS ACTIVE NETWORK AND THE LATEST ORDNANCE SURVEY TRANSFORMATION (OSTN15/OSGM15).

LOCAL SCALE FACTOR HAS BEEN REMOVED TO TRANSFORM THE SURVEY TO A FLAT EARTH GRID (SCALE FACTOR 1.00000).

ALL LEVELS RELATE TO ORDNANCE SURVEY DATUM (NEW 1984). VERTICAL CONTROL HAS BEEN ESTABLISHED USING GPS OBSERVATIONS TO THE OS ACTIVE NETWORK AND THE LATEST ORDNANCE SURVEY TRANSFORMATION (OSTN15/OSGM15).

ALL DIMENSIONS ARE IN METRES UNLESS OTHERWISE STATED.

ANY DIMENSIONS AND MEASUREMENTS SHOULD BE BASED ON THE ORIGINAL DIGITAL DATA AND CONFIRMED WITH BB SURVEYS LTD.

ANY ERRORS SHOULD BE NOTIFIED TO BB SURVEYS LTD.

NO ATTEMPT HAS BEEN MADE TO ENTER ANY CONFINED SPACES ON THIS SITE. WE HAVE MEASURED INVERT DEPTHS, ESTIMATED PIPE SIZES AND SHOWN THE DIRECTION OF FLOW ONLY WHERE DRAIN RUNS ARE ACTIVE AT THE TIME OF SURVEY. INSPECTION COVERS WHICH WE WERE UNABLE TO LIFT BY MANUAL METHODS ARE DENOTED AS MH (U/L). WE DID NOT QUOTE FOR THE USE OF HYDRAULIC LIFTING EQUIPMENT.

DRAINAGE RUNS BETWEEN INSPECTION COVERS HAVE NOT BEEN INVESTIGATED. ANY SHOWN ARE ESTIMATED AND NOT CONFIRMED. ALL DRAINAGE RUNS SHOULD BE PROVED BY EYE TRACING AND IF NECESSARY BY RADIO DETECTION METHODS PRIOR TO ANY DESIGN WORK.

ALL PIPE SIZES AND CONNECTIONS SHOULD ALSO BE CONFIRMED WITH YOUR LOCAL DRAINAGE AUTHORITY PRIOR TO ANY DESIGN WORK.

THERE MAY BE INSPECTION COVERS ON SITE WHICH WERE NOT VISIBLE AT THE TIME OF SURVEY. THEY MAY HAVE BEEN BURIED OR COVERED BY VEGETATION. YOU SHOULD CONSULT YOUR LOCAL DRAINAGE AUTHORITY OR COMMISSION A CCTV DRAINAGE SURVEY TO ENSURE THAT YOU LOCATE ANY MISSING COVERS OR DRAINAGE RUNS.

REV	Date	Created By	Comments
-	06.09.23	BB	First Issue

Scale at A1	Project Number
1:250	2219-4125

Drawing Status

<input checked="" type="checkbox"/>	Existing Topographic Survey
<input type="checkbox"/>	As Built Survey
<input type="checkbox"/>	For Information



**1 Chestnut Place, Cringleford
Norwich, Norfolk NR4 7BD**
t: 01603 507917
m: 07786 388175
e: barry@bbsurveys.co.uk



**High Cross Ware
Update 28/08/23**

**Existing Ground Level Survey
Sheet 7**

Note: The Property Of This Drawing Is Vested In BB SURVEYS LTD And Must Not Be Copied Or Reproduced In Any Way Without Their Written Consent

File Path: E:\Workarea\Scott Properties\2219-4125 - Scott Properties - High Cross Ware - Update 28_08_23.dwg
Plot Date: 07 September 2023 Plot Style: BB Surveys Sld.ctb Saved By: Barry on 07 September 2023