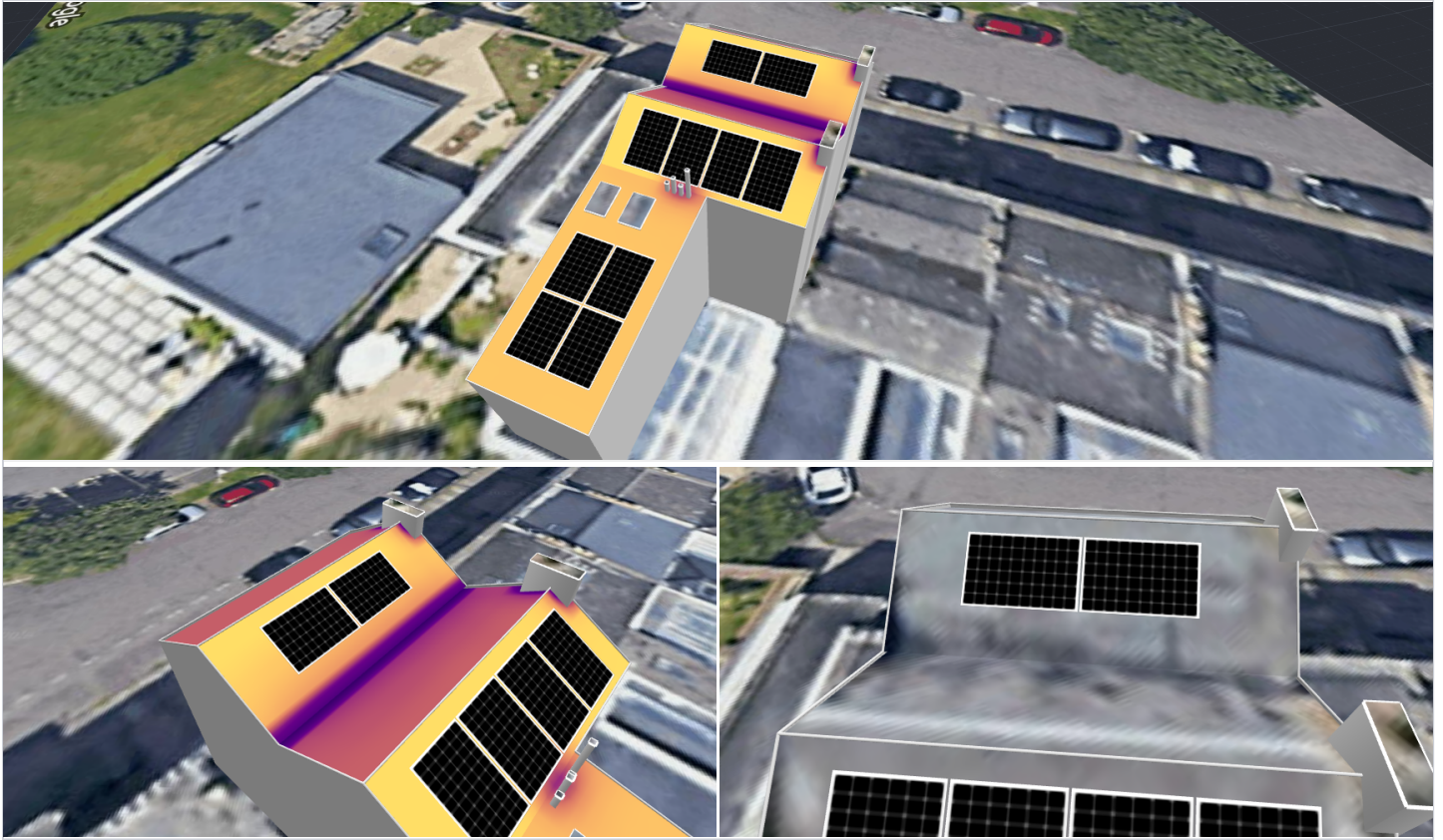


MCDONNELL STEPHEN MORE PANELS

Priory Terrace 3, Cheltenham, GL52 6DS, United Kingdom | 19 Jul 2023



SIMULATION RESULTS



Installed DC Power

4.15 kWp



Max Achieved AC Power

3.00 kW



Annual Energy Production

3.59 MWh



CO2 Emission Saved

695.16 kg



Equivalent Trees Planted

32

ELECTRICAL DESIGN

Inverters & Storage

Strings per inverter Optimizers per string

PV modules per string



1 x SE3000H
3.94kW | 131% Oversizing

1 x string



10 x S440

10

SYSTEM OVERVIEW

10 PV modules

1 Inverter

10 Optimizers

MCDONNELL STEPHEN MORE PANELS

Priority Terrace 3, Cheltenham, GL52 6DS, United Kingdom | 19 Jul 2023



PV MODULES

| # Module | Model | Peak power | Racking type | Orientation | Azimuth | Tilt |
|---------------|--|----------------|--------------|-------------|---------|------|
| 4 | Perlight Solar Co. Ltd., PLM-4150M6B-60 (user-defined) | 1.7 kWp | | | 130° | 30° |
| 4 | Perlight Solar Co. Ltd., PLM-4150M6B-60 (user-defined) | 1.7 kWp | | | 130° | 11° |
| 2 | Perlight Solar Co. Ltd., PLM-4150M6B-60 (user-defined) | 0.8 kWp | | | 130° | 30° |
| Total: | 10 | 4.2 kWp | | | | |

BILL OF MATERIALS (BOM)

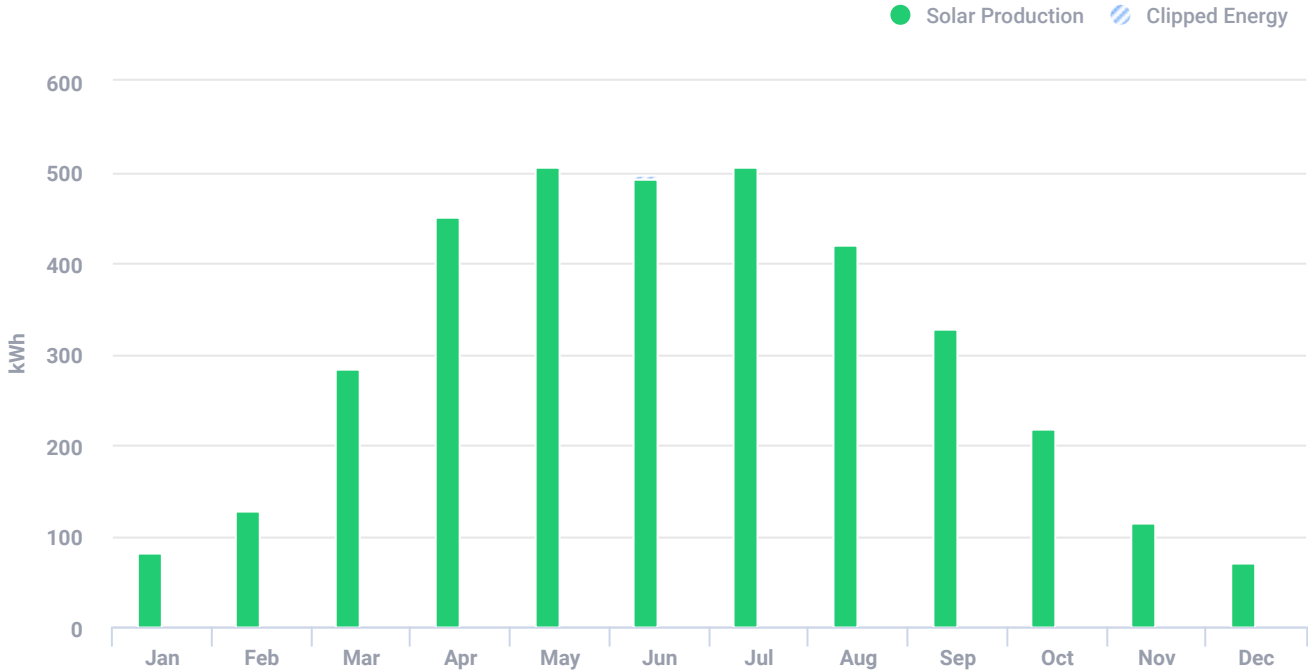
| Items | Part Number | Quantity | Price (£) | Total (£) |
|--|-------------------|----------|-----------|-----------|
| SE3000H 3kW "Home Wave" Single Phase Inverter | SE3000H-RW000BEN4 | 1 | 0.00 | 0.00 |
| S440 input up to 440Wp, Max Isc 14.5A | S440-1GM4MRM | 10 | 0.00 | 0.00 |
| PLM-4150M6B-60 | | 10 | | |

MCDONNELL STEPHEN MORE PANELS

Priory Terrace 3, Cheltenham, GL52 6DS, United Kingdom | 19 Jul 2023



ESTIMATED MONTHLY ENERGY



Total clipped energy: 0.19%

SYSTEM LOSS DIAGRAM

