

notes

THIS DRAWING SHALL BE READ IN CONJUNCTION WITH THE FOLLOWING ARCHITECTS DRAWINGS:

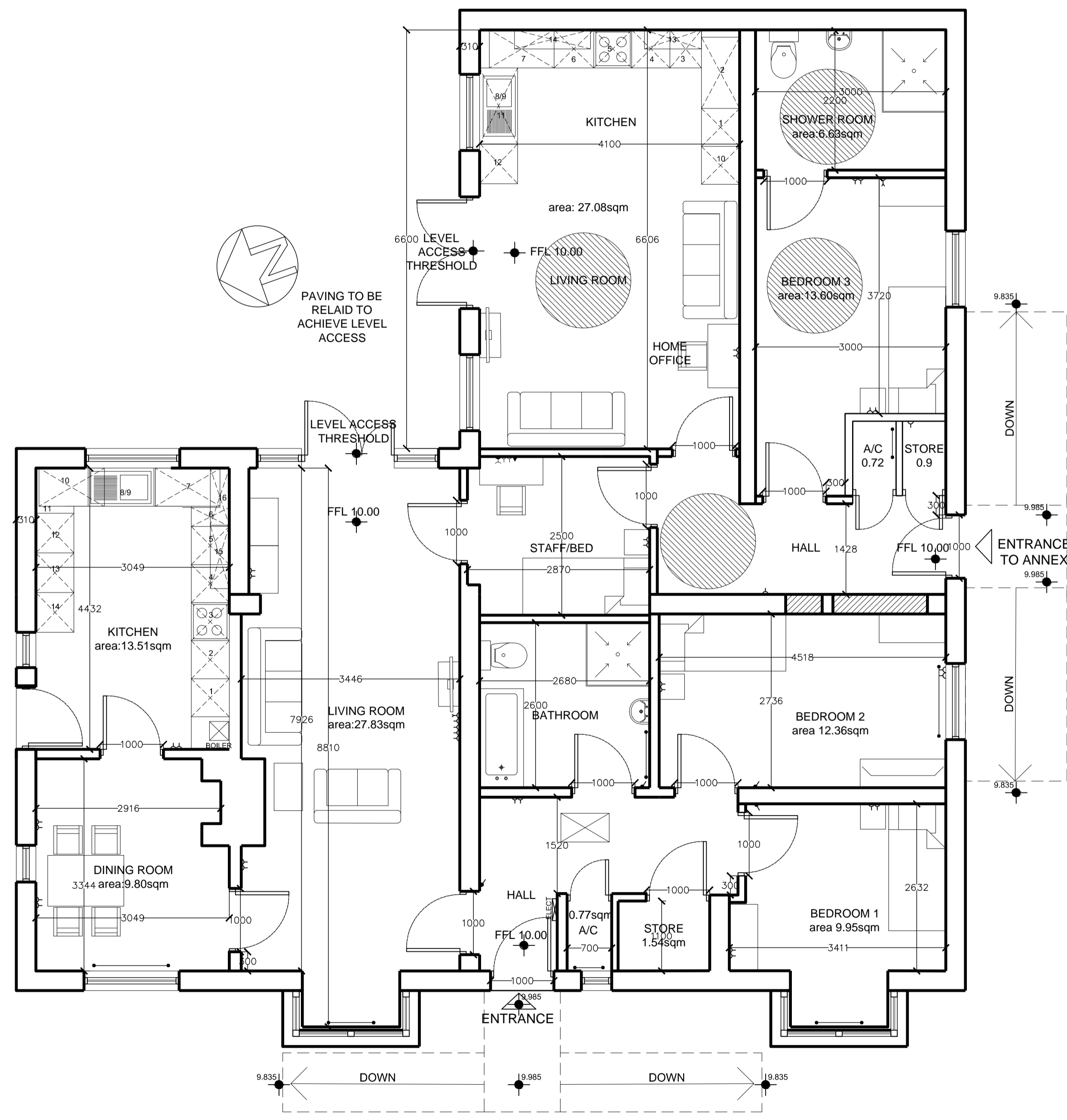
- (90)001 EXISTING SITE LOCATION PLAN
- (90)002 EXISTING PLAN
- (90)003 EXISTING SITE PLAN
- (90)004 EXISTING ELEVATIONS
- (90)005 PROPOSED PLAN
- (90)006 PROPOSED SITE PLAN
- (90)007 PROPOSED ELEVATIONS
- (90)008 PROPOSED ELEVATIONS

Notes
This drawing is copyright. No part of this drawing or any information contained herein may be reproduced, stored in a retrieval system, or transmitted in any form or by any means, electronic, mechanical, photocopying, recording, or by any information storage and retrieval system, without the prior written permission of the architect. Do not scale this drawing. Work to figured dimensions only.

Specification
This drawing must be read in conjunction with 'Drawing Specification Notes' Bill of Materials. Material specifications must be read in conjunction with all related Architects conditions and schedules drawings and documents.

Sheet: **PROPOSED PLAN**
Date: **AUG 2023**
Scale: **1:50**
Job No:
Drawn/Checked: **(90)005C**
CS/WJ

Client: **FIRST CHOICE HOUSING ASSOCIATION**
Job: **66 Cae Gwyn Road, Cardiff**
daviess lewelyn and jones
Chartered Architects
The Millgate, East Tyndall Street, Cardiff CF24 9EZ, Tel: (029) 2046 4493 Fax: (029) 2046 4346



KITCHEN 1

1. 600X600X900 HIGH LINE BASE UNIT	0.21
2. 1120X600X900 CORNER BASE UNIT WITH CAROUSEL AND 600 DOOR	0.35
3. 500X600X900 HI LINE BASE UNIT	0.17
4. 600X600X900 3 DRAWER BASE UNIT	0.21
5. 600X600X900 BASE UNIT WITH WORKTOP OVER AND INSET INDUCTION HOB	0.21
6. 625X800 SPACE FOR WASHING MACHINE C/W WORK TOP OVER	0.28
7. 1020X600X900 CORNER BASE UNIT	0.35
8. 1000 LONG X600X900 SINK BASE	
9. 950X509 STAINLESS STEEL INSET SINK	
10. 2100X600 OVER HOUSING UNIT C/W DOUBLE OVEN+SIDE HUNG DOOR	
11. 625X600 SPACE FOR TUMBLE DRIER C/W WORK TOP OVER	
12. 625X600 SPACE FOR TALL FRIDGE/FREEZER	
13. 900X300X600 WALL UNIT	0.21
14. 1200X300X600 WALL UNIT	0.29
<hr/>	
	2.28m3

KITCHEN 2

1. 2100x600x600 TALL OVEN HOUSING	
2. 600X600X900 HIGH LINE BASE UNIT	0.21
3. 600X600X900 BASE UNIT WITH WORKTOP OVER AND INSET INDUCTION HOB	0.21
4. 600X600X900 3 DRAWER BASE UNIT	0.21
5. 600X600X900 HIGH LINE BASE UNIT	0.10
6. 300X600X900 HIGH LINE BASE UNIT	0.28
7. 1020X600X900 CORNER BASE UNIT WITH CAROUSEL AND 500 DOOR	0.21
8. 600LONGX600X900 SINK BASE	
9. 950X508 STAINLESS STEEL INSET SINK	
10. 1020X600X900 CORNER BASE UNIT WITH CAROUSEL AND 500 DOOR	0.28
11. 150 TRAY SPACE	0.10
12. 625X600X SPACE FOR W.M WITH WORK TOP OVER	
13. 625X600X900 SPACE FOR T.D. WITH WORK TOP OVER	
14. 625 WIDE SPACE FOR TALL FRIDGE/FREEZER	
15. 1000X300X600 WALL UNIT	0.16
16. 900X300X600 WALL UNIT	0.13
<hr/>	
	2.10m3

PROPOSED PLAN

