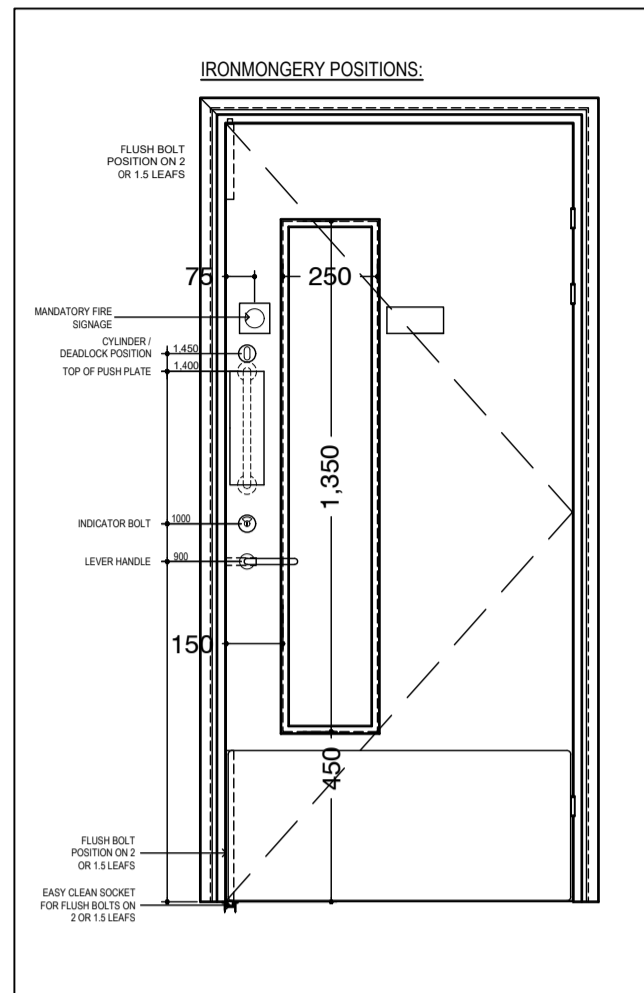
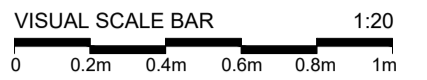


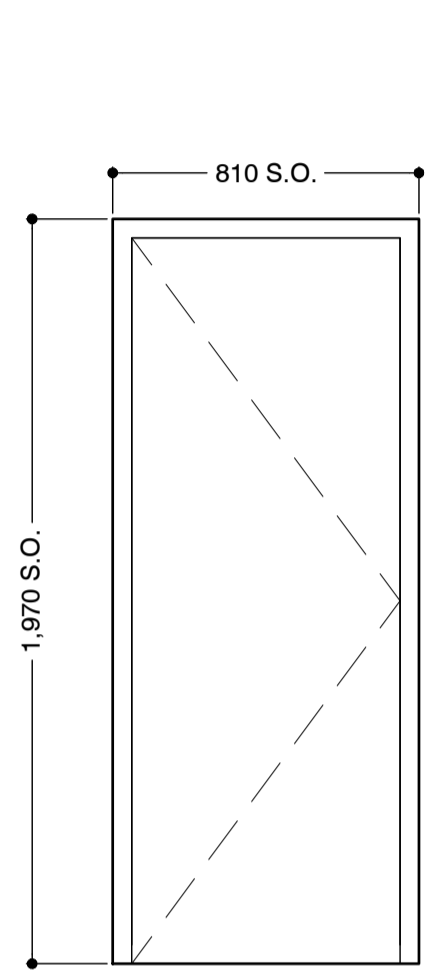
**SPECIFICATION FOR GLAZED DOORS
SCREENS & WINDOWS DEVELOPED IN
CONJUNCTION WITH PAUL COLEY
SENIOR ARCHITECTURAL SYSTEMS LTD
ARCHITECTURAL ADVISOR
MOBILE - 07551130991
EMAIL - PAULC@SASMAIL.CO.UK**

**ALL DIMENSIONS TO BE
CHECKED ON SITE PRIOR
TO MANUFACTURE**

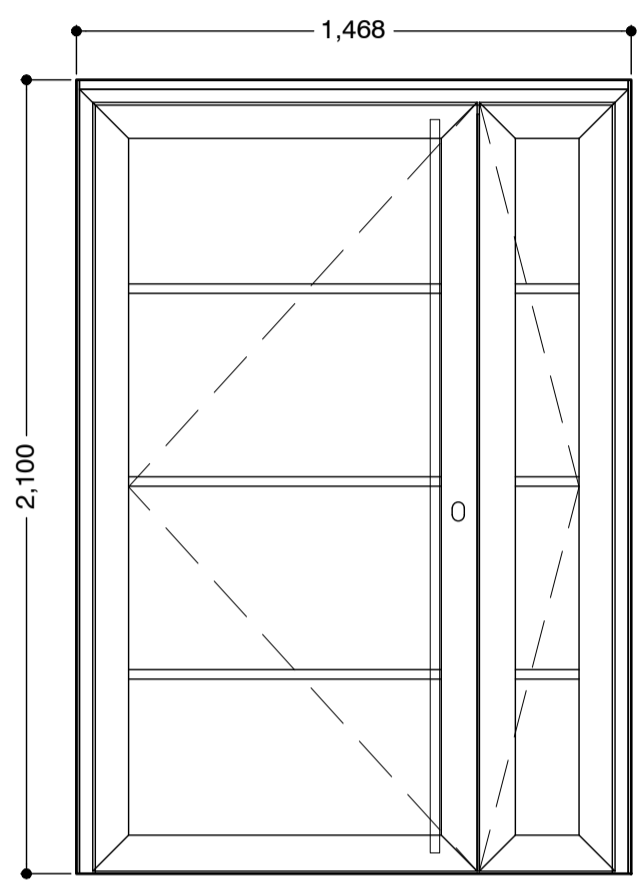
NOTES
DO NOT SCALE THIS DRAWING. IF IN DOUBT ASK. THIS DRAWING
IS COPYRIGHT DUNWOODIE SWIFT ARCHITECTS LTD. ALL
DIMENSIONS TO BE CONFIRMED ON SITE. ANY
INCONSISTENCIES TO BE REPORTED TO ARCHITECT
IMMEDIATELY



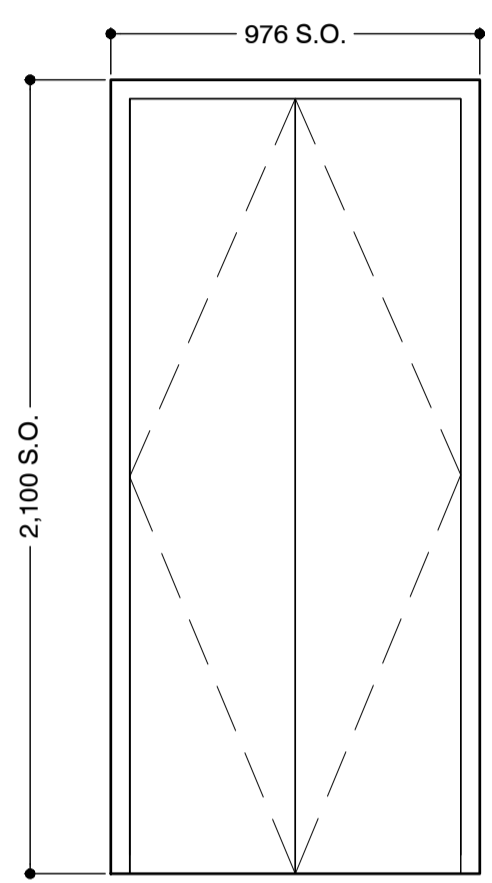
REFER TO DRAWINGS:-
1049-P0-[00]-100 FOR GROUND FLOOR GA PLAN
1049-P0-[00]-100.01 100.02 FOR ENLARGED
GROUND FLOOR PLANS
1049-P1-[00]-101 FOR 1ST FLOOR GA PLAN
1049-P1-[00]-101.01 TO 101.03 FOR ENLARGED
FIRST FLOOR PLANS
1049-P2-[00]-102 FOR 2ND FLOOR PLAN
1049-P2-[00]-102.01 TO 102.03 FOR ENLARGED
SECOND FLOOR PLANS
1049-P3-[00]-103 FOR 3RD FLOOR PLAN
1049-P3-[00]-103.01 TO 103.03 FOR ENLARGED 3RD
FLOOR PLANS
1049-P4-[00]-104 FOR ROOF PLAN
1049-P*-[22] SERIES FOR WALL TYPES
1049-DE-[22] & 1049-EL-[22] SERIES FOR INTERNAL
WALL CLADDING DETAILS & ELEVATIONS
1049-DE-[24] & [34] SERIES FOR STAIRS /
BALUSTRADES
1049-SC-[30] & 1049-CO-[30] SERIES FOR OPENING
SCHEDULES / COMPONENTS / LINTELS
1049-P*-[35] SERIES FOR REFLECTED CEILINGS
1049-P*-[40] SERIES FOR BOH INTERNAL FINISHES
1049-DE-[66] SERIES FOR LIFT & SHAFT DETAILS
1049-P*-[68] & 1049-DE-[68] SERIES FOR FIRE
STRATEGY & DETAILS
1049-DE-[74] SERIES FOR WASHROOMS



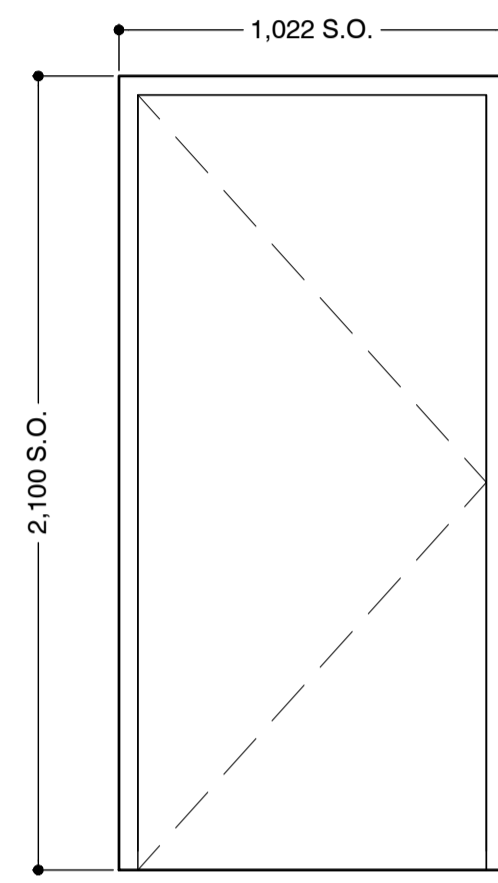
TYPE 9 SINGLE STEEL DOORSET
ARMOURPOST PERSONNEL STEEL
DOORSET WITH SINGLE REBATE
FRAME POLYESTER POWDER COATED
(MINIMUM 40 MICRONS)



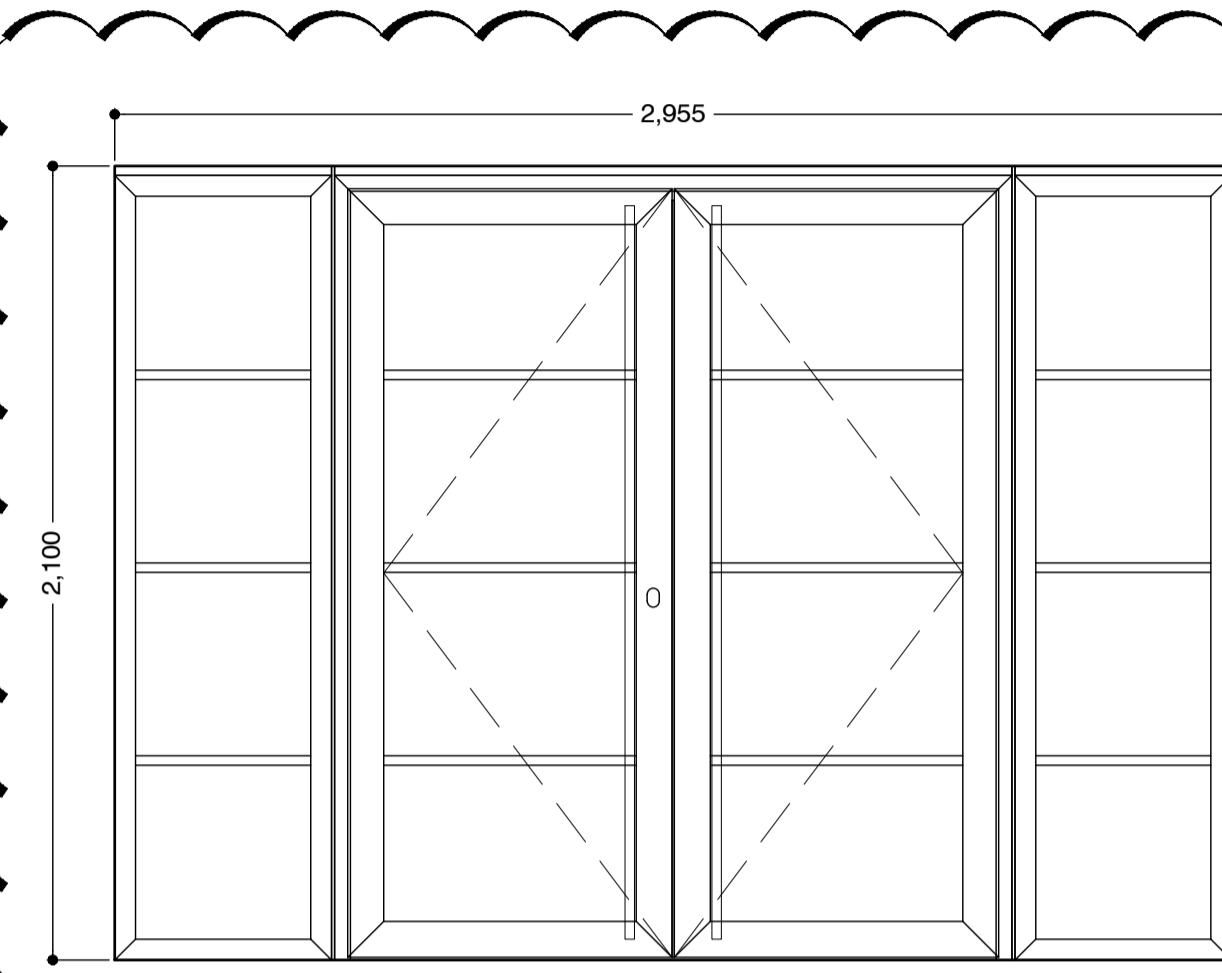
TYPE 10 GLAZED DOUBLE DOOR
SAS PURE THERMALLY BROKEN DOOR / FRAME
SYSTEM COMPLETE WITH FACE APPLIED COLOUR
MATCHED GEORGIAN BARS SAE25X4 WITH INTERNAL
DUPLEX BARS IN GLAZING UNITS. FULL HEIGHT MIN
30MM DIA OFFSET SATIN STAINLESS STEEL HANDLES
TO BOTH SIDES.
ALL PANES TO BE CLEAR SAFETY GLASS



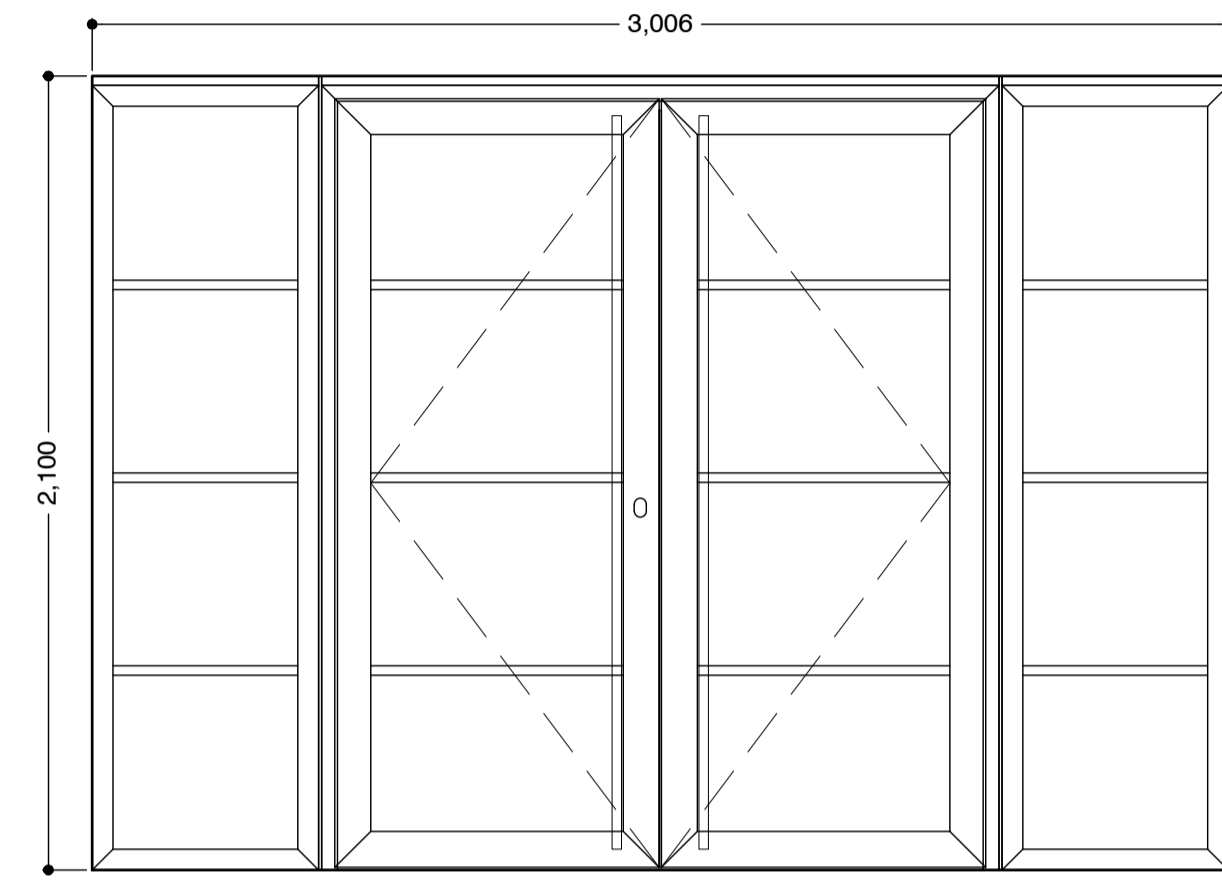
TYPE 11 DOUBLE STEEL DOORSET
ARMOURPOST PERSONNEL STEEL
DOORSET WITH SINGLE REBATE FRAME
POLYESTER POWDER COATED (MINIMUM
40 MICRONS)



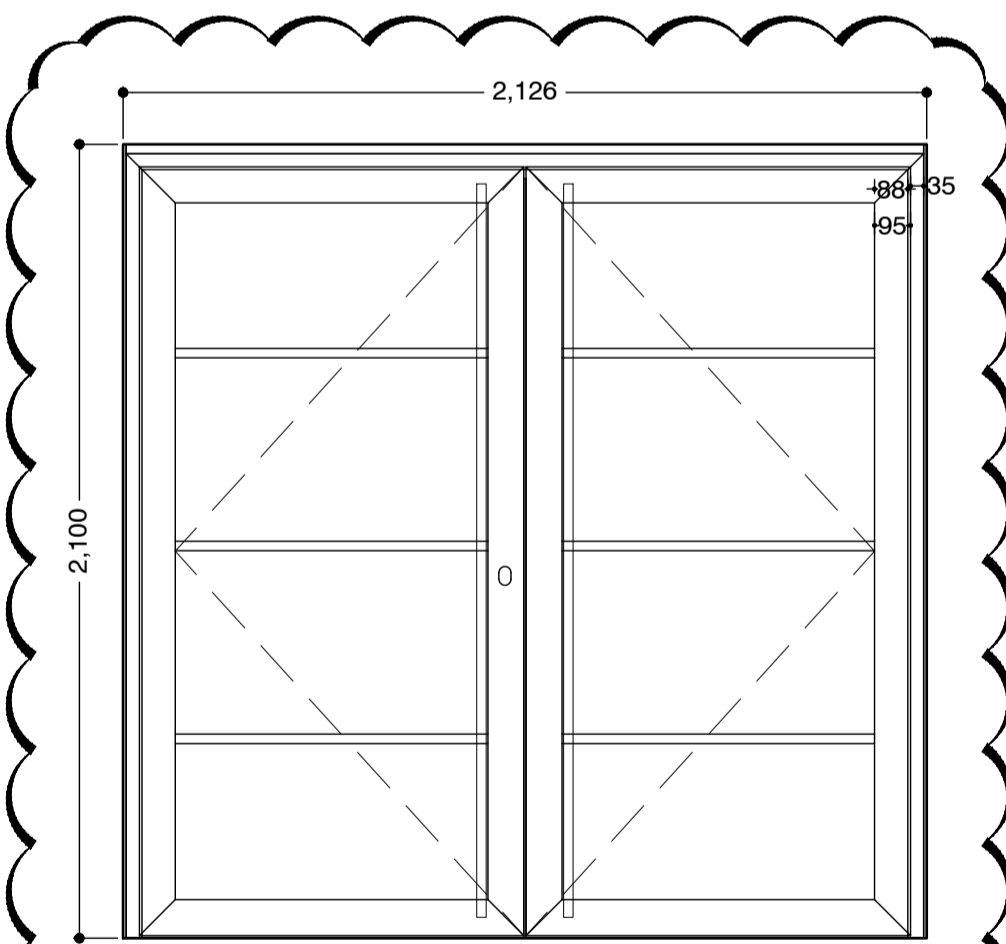
TYPE 12 SINGLE STEEL DOORSET
ARMOURPOST PERSONNEL STEEL
DOORSET WITH SINGLE REBATE FRAME
POLYESTER POWDER COATED (MINIMUM
40 MICRONS)



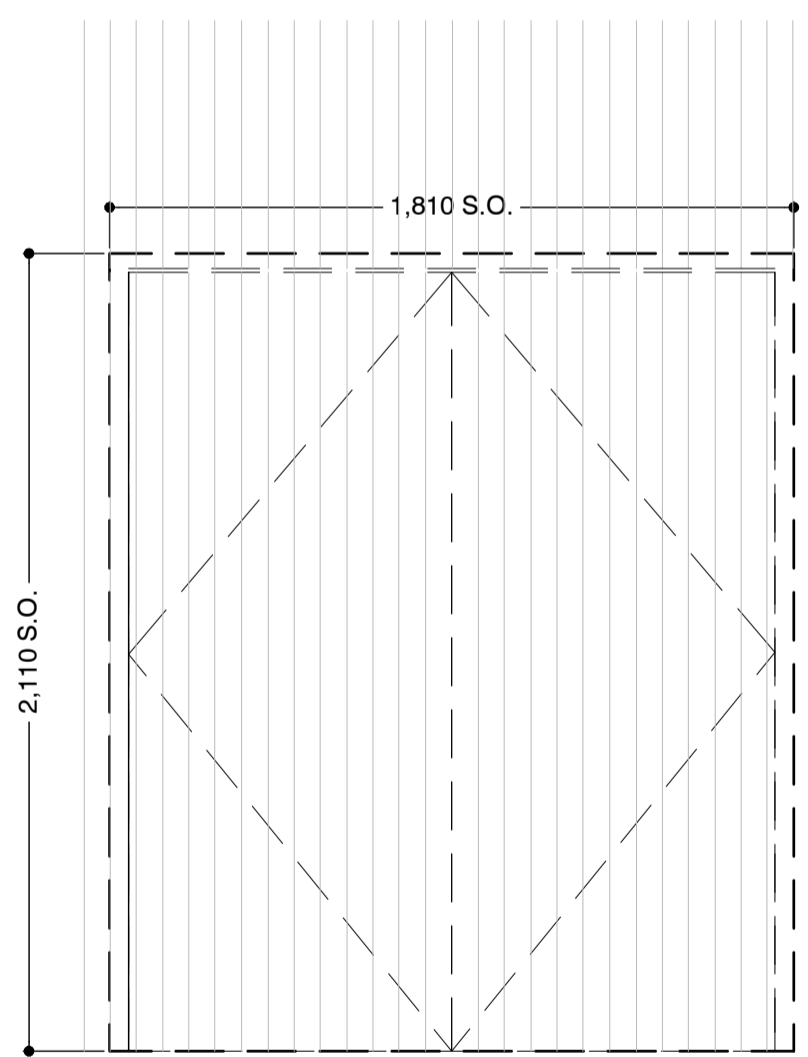
TYPE 13 GLAZED DOUBLE DOOR
SAS PURE THERMALLY BROKEN DOOR / FRAME
SYSTEM COMPLETE WITH FACE APPLIED COLOUR
MATCHED GEORGIAN BARS SAE25X4 WITH INTERNAL
DUPLEX BARS IN GLAZING UNITS. FULL HEIGHT MIN
30MM DIA OFFSET SATIN STAINLESS STEEL HANDLES
TO BOTH SIDES.
ALL PANES TO BE CLEAR SAFETY GLASS



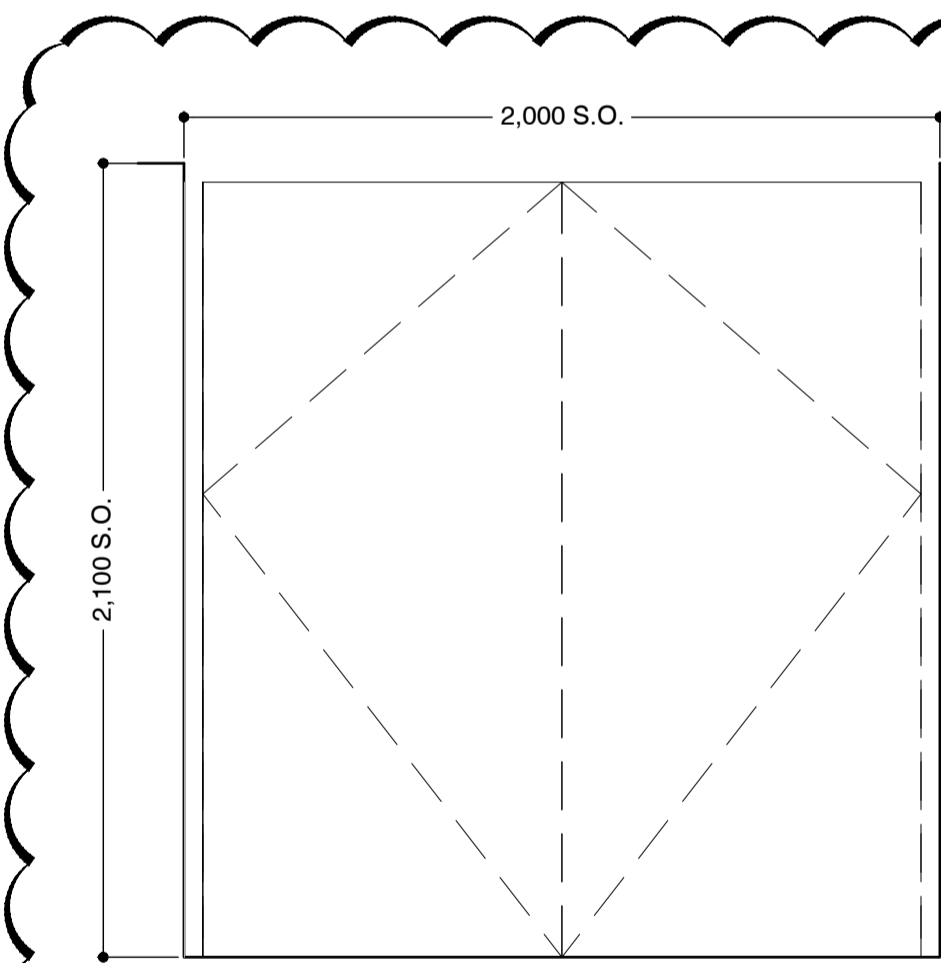
TYPE 14 GLAZED DOUBLE DOOR
SAS PURE THERMALLY BROKEN DOOR / FRAME
SYSTEM COMPLETE WITH FACE APPLIED COLOUR
MATCHED GEORGIAN BARS SAE25X4 WITH INTERNAL
DUPLEX BARS IN GLAZING UNITS. FULL HEIGHT MIN
30MM DIA OFFSET SATIN STAINLESS STEEL HANDLES
TO BOTH SIDES.
ALL PANES TO BE CLEAR SAFETY GLASS



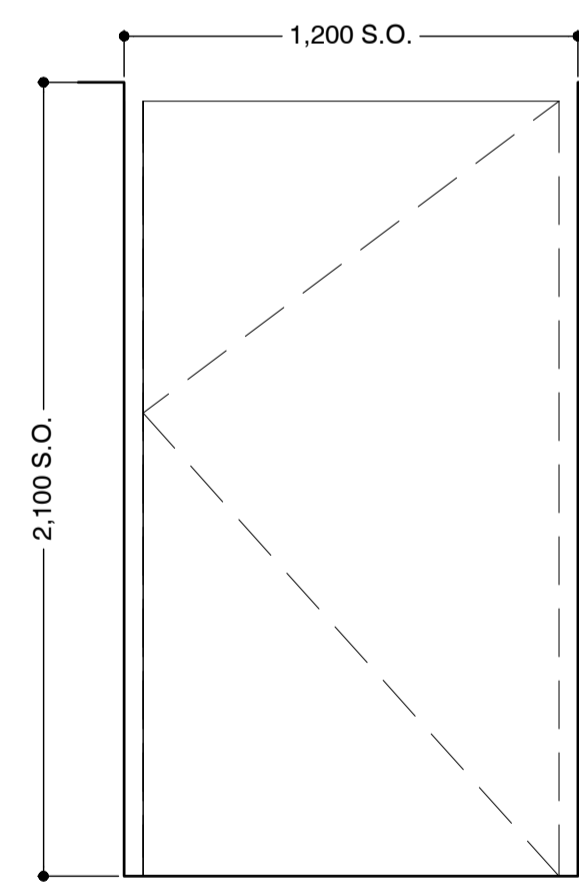
TYPE 15 GLAZED DOUBLE DOOR
SAS PURE THERMALLY BROKEN DOOR / FRAME
SYSTEM COMPLETE WITH FACE APPLIED COLOUR
MATCHED GEORGIAN BARS SAE25X4 WITH INTERNAL
DUPLEX BARS IN GLAZING UNITS. FULL HEIGHT MIN
30MM DIA OFFSET SATIN STAINLESS STEEL HANDLES
TO BOTH SIDES.
ALL PANES TO BE CLEAR SAFETY GLASS



TYPE 16 DOUBLE STEEL DOORSET
ARMOURPOST PERSONNEL STEEL DOORSET WITH SINGLE REBATE
FRAME POLYESTER POWDER COATED (MINIMUM 40 MICRONS)
FACED WITH CORRUGATED CONTAINER METAL SHEETING TO MATCH
ENTRANCE RECESS WALL CLADDING.



TYPE 17 DOUBLE STEEL DOORSET
ARMOURPOST PERSONNEL STEEL DOORSET WITH SINGLE REBATE
FRAME POLYESTER POWDER COATED (MINIMUM 40 MICRONS)
FITTED INTO PLANT COMPOUND SCREENING



TYPE 18 DOUBLE STEEL DOORSET
ARMOURPOST PERSONNEL STEEL DOORSET WITH SINGLE REBATE
FRAME POLYESTER POWDER COATED (MINIMUM 40 MICRONS)
FITTED INTO PLANT COMPOUND SCREENING

PROJ	DATE	DESCRIPTION	BY	CHK
PR02	14/03/23	GLAZING BAR SPEC UPDATED	CGF	PS
PR01	22/12/22	FIRST ISSUE	JW	CGF

**dunwoodieswift
architects**

CLIENT
ANSON HOUSE 12

PROJECT
**STACK DURHAM
4 SILVER STREET**

TITLE
**EXTERNAL OPENING
COMPONENTS SHEET 2 of 2**

SCALE @ A1	1:20	STATUS	PRODUCTION
NAME		DATE	
DRAWN BY	JW	DATE	14/02/2023
CHECKED BY	CGF		
PROJECT No.	DRAWING No.	REVISION	
1049	CO-[30]-121	PR02	