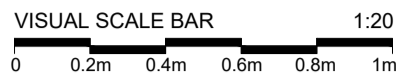


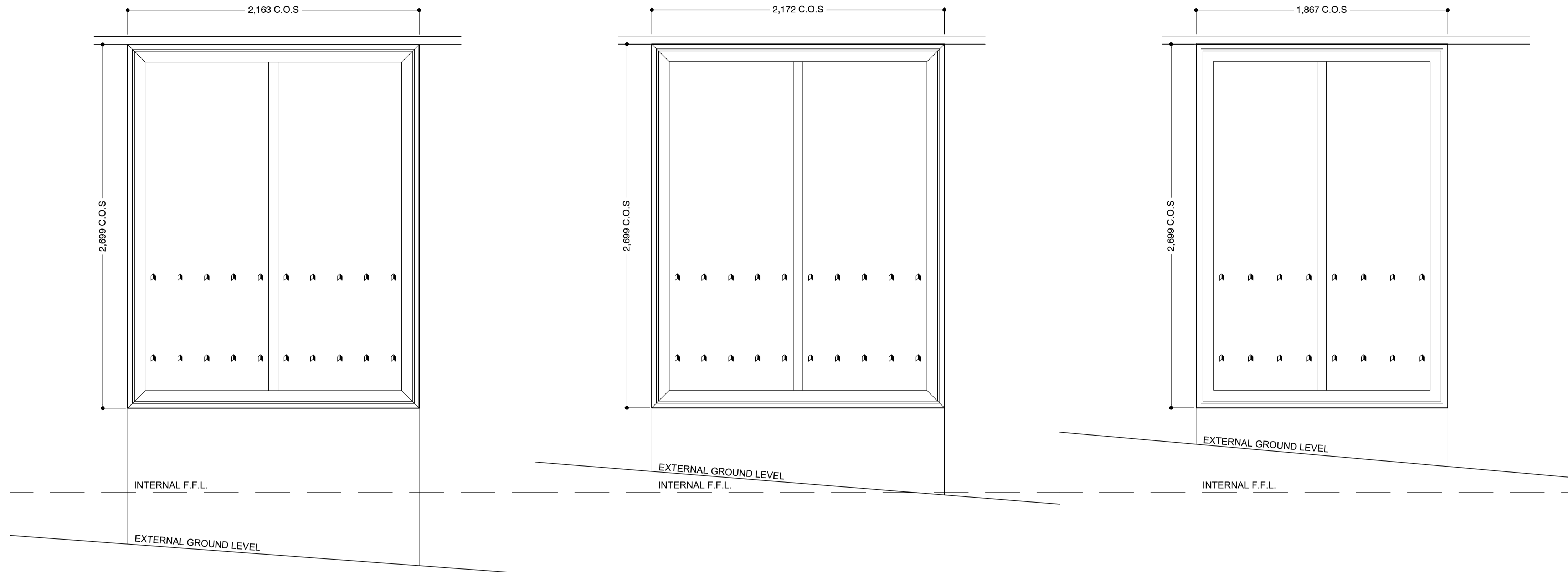
**SPECIFICATION FOR GLAZED DOORS  
SCREENS & WINDOWS DEVELOPED IN  
CONJUNCTION WITH PAUL COLEY  
SENIOR ARCHITECTURAL SYSTEMS LTD  
ARCHITECTURAL ADVISOR  
MOBILE - 07551130991  
EMAIL - PAULC@SASMAIL.CO.UK**

**ALL DIMENSIONS TO BE  
CHECKED ON SITE PRIOR  
TO MANUFACTURE**

**NOTES**  
DO NOT SCALE THIS DRAWING. IF IN DOUBT ASK. THIS DRAWING IS COPYRIGHT DUNWOODIE SWIFT ARCHITECTS LTD. ALL DIMENSIONS TO BE CONFIRMED ON SITE. ANY INCONSISTENCIES TO BE REPORTED TO ARCHITECT IMMEDIATELY



REFER TO DRAWINGS:-  
1049-P0-[00]-100 FOR GROUND FLOOR GA PLAN  
1049-P0-[00]-100.01 100.02 FOR ENLARGED GROUND FLOOR PLANS  
1049-P1-[00]-101 FOR 1ST FLOOR GA PLAN  
1049-P1-[00]-101.01 TO 101.03 FOR ENLARGED FIRST FLOOR PLANS  
1049-P2-[00]-102 FOR 2ND FLOOR PLAN  
1049-P2-[00]-102.01 TO 102.03 FOR ENLARGED SECOND FLOOR PLANS  
1049-P3-[00]-103 FOR 3RD FLOOR PLAN  
1049-P3-[00]-103.01 TO 103.03 FOR ENLARGED 3RD FLOOR PLANS  
1049-P4-[00]-104 FOR ROOF PLAN  
1049-P\*-[22] SERIES FOR WALL TYPES  
1049-DE-[22] & 1049-EL-[22] SERIES FOR INTERNAL WALL CLADDING DETAILS & ELEVATIONS  
1049-DE-[24] & [34] SERIES FOR STAIRS / BALUSTRADES  
1049-SC-[30] & 1049-CO-[30] SERIES FOR OPENING SCHEDULES / COMPONENTS / LINTELS  
1049-P\*-[35] SERIES FOR REFLECTED CEILINGS  
1049-P\*-[40] SERIES FOR BOH INTERNAL FINISHES  
1049-DE-[66] SERIES FOR LIFT & SHAFT DETAILS  
1049-P\*-[68] & 1049-DE-[68] SERIES FOR FIRE STRATEGY & DETAILS  
1049-DE-[74] SERIES FOR WASHROOMS



**TYPE W.1** SHOP FRONT WINDOW

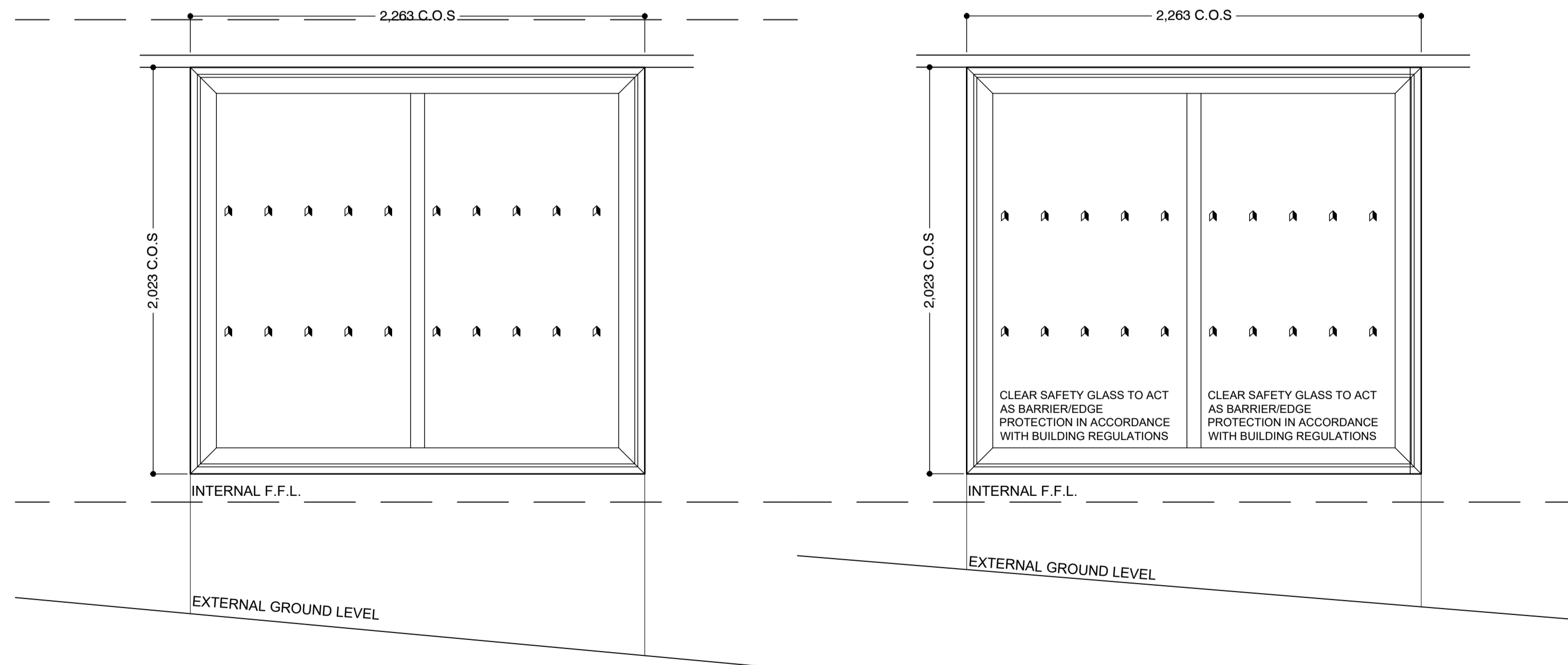
SAS SPW500  
ALL PANES TO BE CLEAR SAFETY GLASS

**TYPE W.2** SHOP FRONT WINDOW

SAS SPW500  
ALL PANES TO BE CLEAR SAFETY GLASS

**TYPE W.3** SHOP FRONT WINDOW

SAS SPW500  
ALL PANES TO BE CLEAR SAFETY GLASS - 6.8/14/6.8 DOUBLE GLAZED ACOUSTIC GLAZING UNITS



**TYPE W.4** SHOP FRONT WINDOW

SAS SPW500  
ALL PANES TO BE CLEAR SAFETY GLASS - 6.8/14/6.8 DOUBLE GLAZED ACOUSTIC GLAZING UNITS  
NO ACCESS TO WINDOW DUE TO LIFT SHAFT BEHIND.

**TYPE W.5** SHOP FRONT WINDOW

SAS SPW500  
ALL PANES TO BE CLEAR SAFETY GLASS - 6.8/14/6.8 (T.B.C.) DOUBLE GLAZED ACOUSTIC GLAZING UNITS  
WINDOW TO ACT AS BARRIEREDGE PROTECTION IN ACCORDANCE WITH BUILDING REGULATIONS

| REV  | DATE     | DESCRIPTION | BY | CHK |
|------|----------|-------------|----|-----|
| PR01 | 22/12/22 | FIRST ISSUE | JW | CGF |

**dunwoodieswift  
architects**

CLIENT  
**ANSON HOUSE 12**

PROJECT  
**STACK DURHAM  
4 SILVER STREET**

TITLE  
**EXTERNAL COMPONENTS -  
SHOP FRONT SCREENS**

| SCALE @ A1  | 1:20        | STATUS   | PRODUCTION |
|-------------|-------------|----------|------------|
| DRAWN BY    | JW          | DATE     | 14/02/2023 |
| CHECKED BY  | CGF         |          |            |
| PROJECT No. | DRAWING No. | REVISION |            |
| 1049        | CO-[30]-124 | PR01     |            |