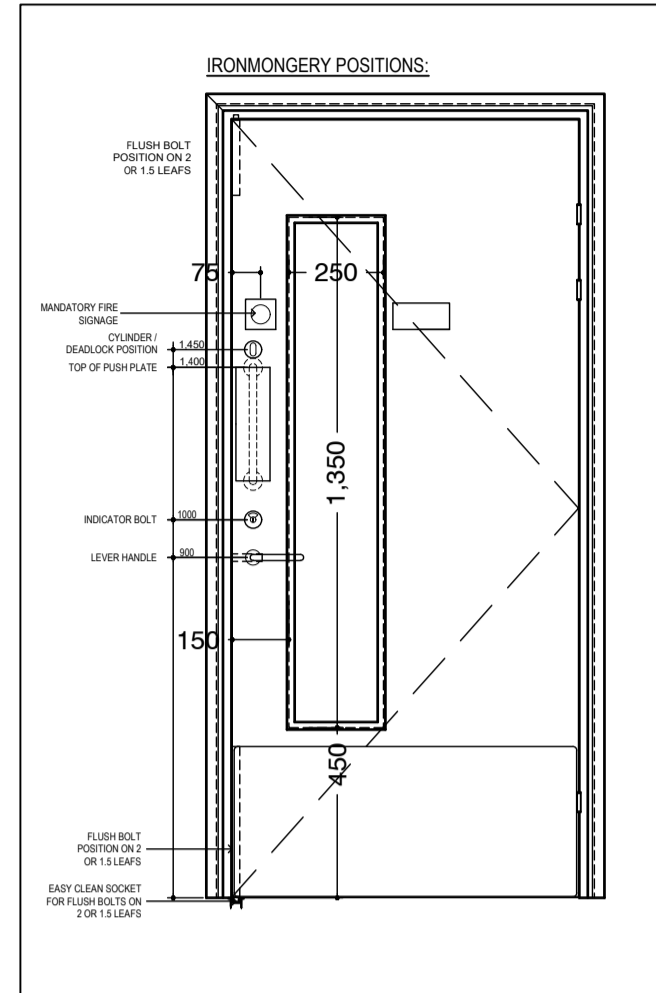
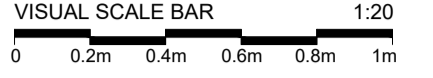


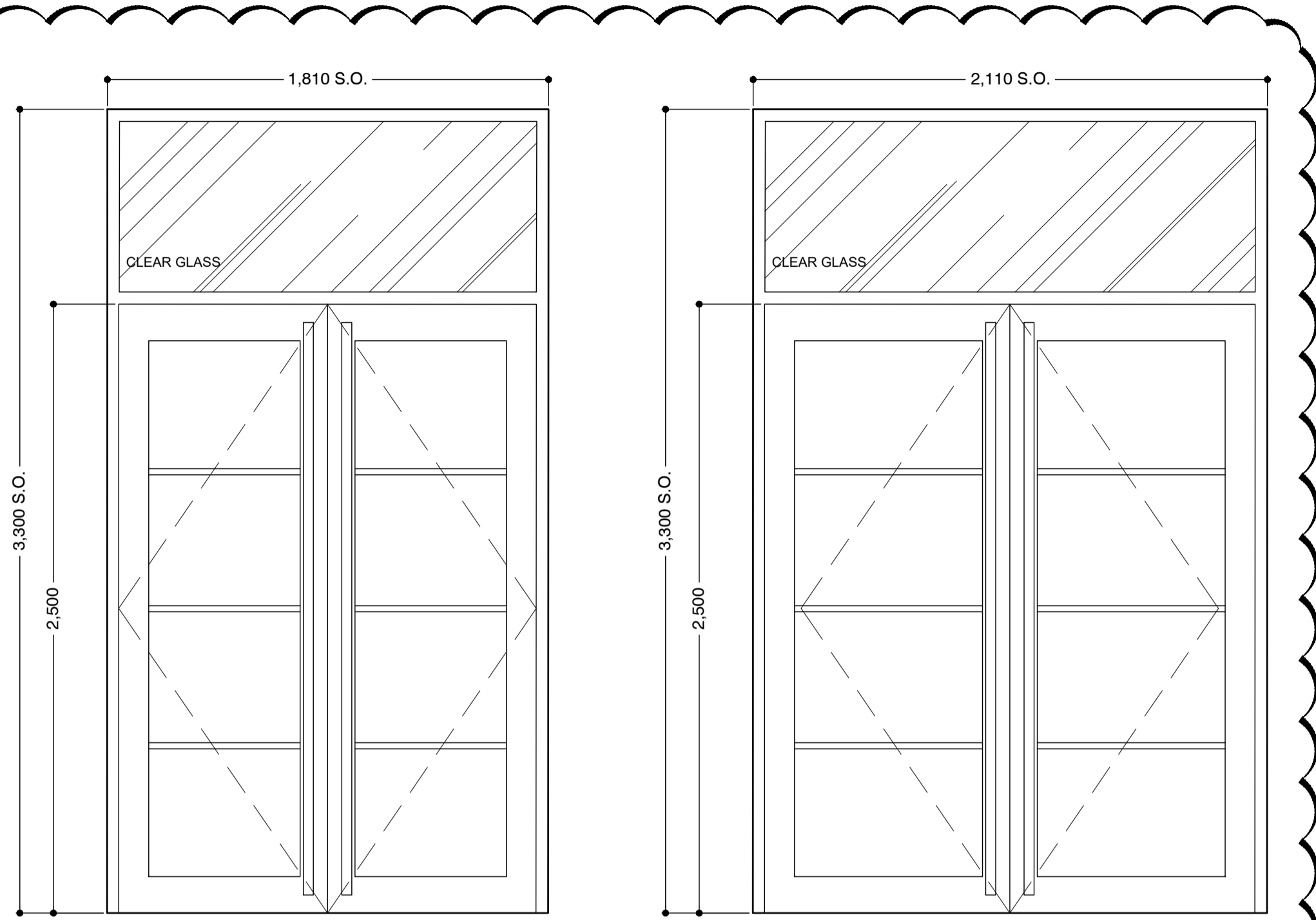
**SPECIFICATION FOR GLAZED DOORS
SCREENS & WINDOWS DEVELOPED IN
CONJUNCTION WITH PAUL COLEY
SENIOR ARCHITECTURAL SYSTEMS LTD
ARCHITECTURAL ADVISOR
MOBILE - 07551130991
EMAIL - PAULC@SASMAIL.CO.UK**

**ALL DIMENSIONS TO BE
CHECKED ON SITE PRIOR
TO MANUFACTURE**

NOTES
DO NOT SCALE THIS DRAWING. IF IN DOUBT ASK. THIS DRAWING IS COPYRIGHT DUNWOODIE SWIFT ARCHITECTS LTD. ALL DIMENSIONS TO BE CONFIRMED ON SITE. ANY INCONSISTENCIES TO BE REPORTED TO ARCHITECT IMMEDIATELY.



- REFER TO DRAWINGS:-
 1049-P0-[00]-100 FOR GROUND FLOOR GA PLAN
 1049-P0-[00]-100.01 100.02 FOR ENLARGED GROUND FLOOR PLANS
 1049-P1-[00]-101 FOR 1ST FLOOR GA PLAN
 1049-P1-[00]-101.01 TO 101.03 FOR ENLARGED FIRST FLOOR PLANS
 1049-P2-[00]-102 FOR 2ND FLOOR PLAN
 1049-P2-[00]-102.01 TO 102.03 FOR ENLARGED SECOND FLOOR PLANS
 1049-P3-[00]-103 FOR 3RD FLOOR PLAN
 1049-P3-[00]-103.01 TO 103.03 FOR ENLARGED 3RD FLOOR PLANS
 1049-P4-[00]-104 FOR ROOF PLAN
 1049-P*-[22] SERIES FOR WALL TYPES
 1049-DE-[22] & 1049-EL-[22] SERIES FOR INTERNAL WALL CLADDING DETAILS & ELEVATIONS
 1049-DE-[24] & [34] SERIES FOR STAIRS / BALUSTRADES
 1049-SC-[30] & 1049-CO-[30] SERIES FOR OPENING SCHEDULES / COMPONENTS / LINTELS
 1049-P*-[35] SERIES FOR REFLECTED CEILINGS
 1049-P*-[40] SERIES FOR BOH INTERNAL FINISHES
 1049-DE-[66] SERIES FOR LIFT & SHAFT DETAILS
 1049-P*-[68] & 1049-DE-[68] SERIES FOR FIRE STRATEGY & DETAILS
 1049-DE-[74] SERIES FOR WASHROOMS

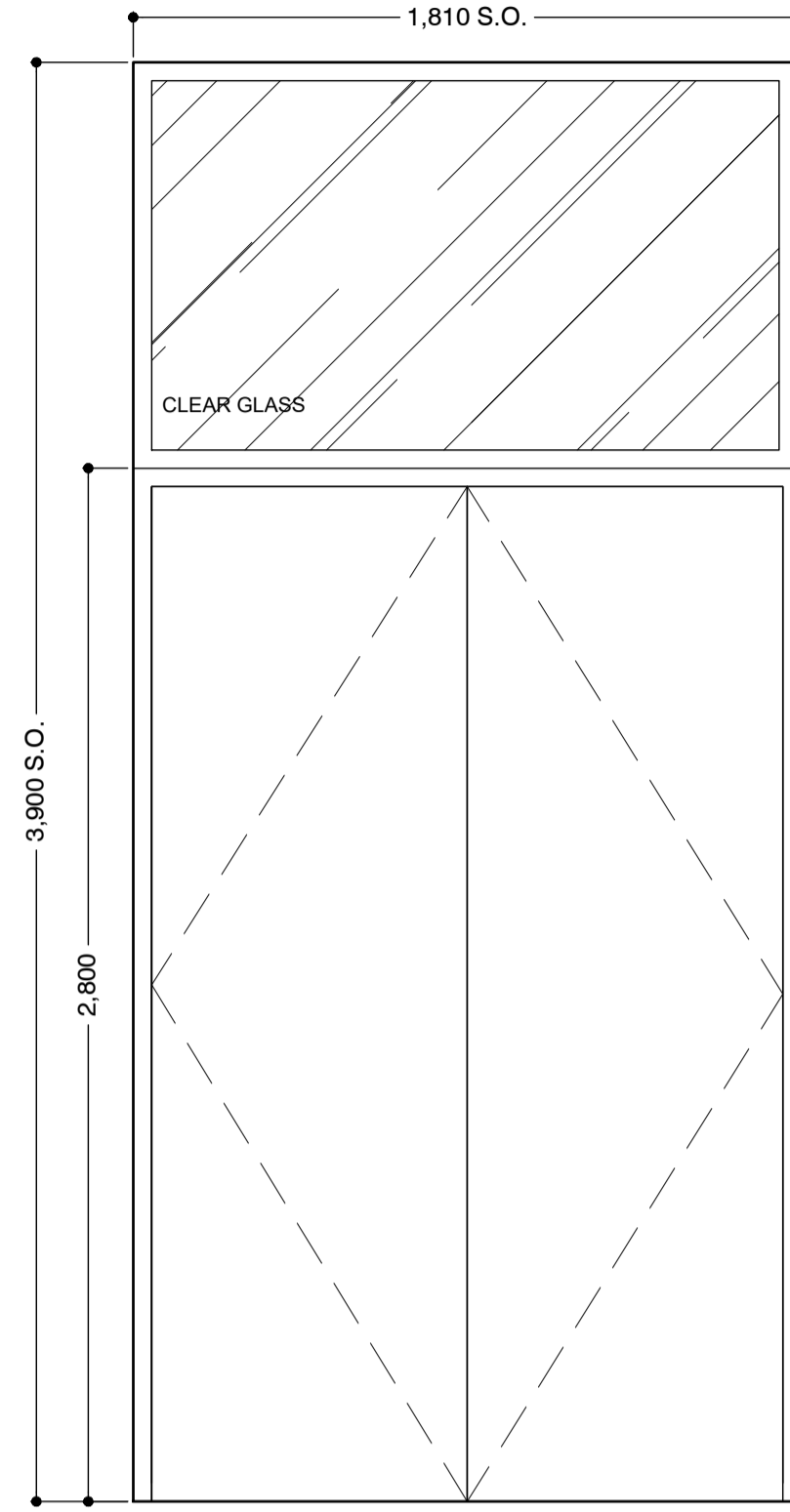


TYPE 1 GLAZED DOUBLE DOOR

SAS SPW500 THERMALLY BROKEN DOOR/FRAME SYSTEM WITH ANTI FINGER TRAP STILES COMPLETE WITH FACE APPLIED COLOUR MATCHED GEORGIAN BARS SAE25X4 WITH INTERNAL DUPLEX BARS IN GLAZING UNITS. FULL HEIGHT MIN 30MM DIA OFFSET SATIN STAINLESS STEEL HANDLES TO BOTH SIDES. ALL PANES TO BE CLEAR SAFETY GLASS

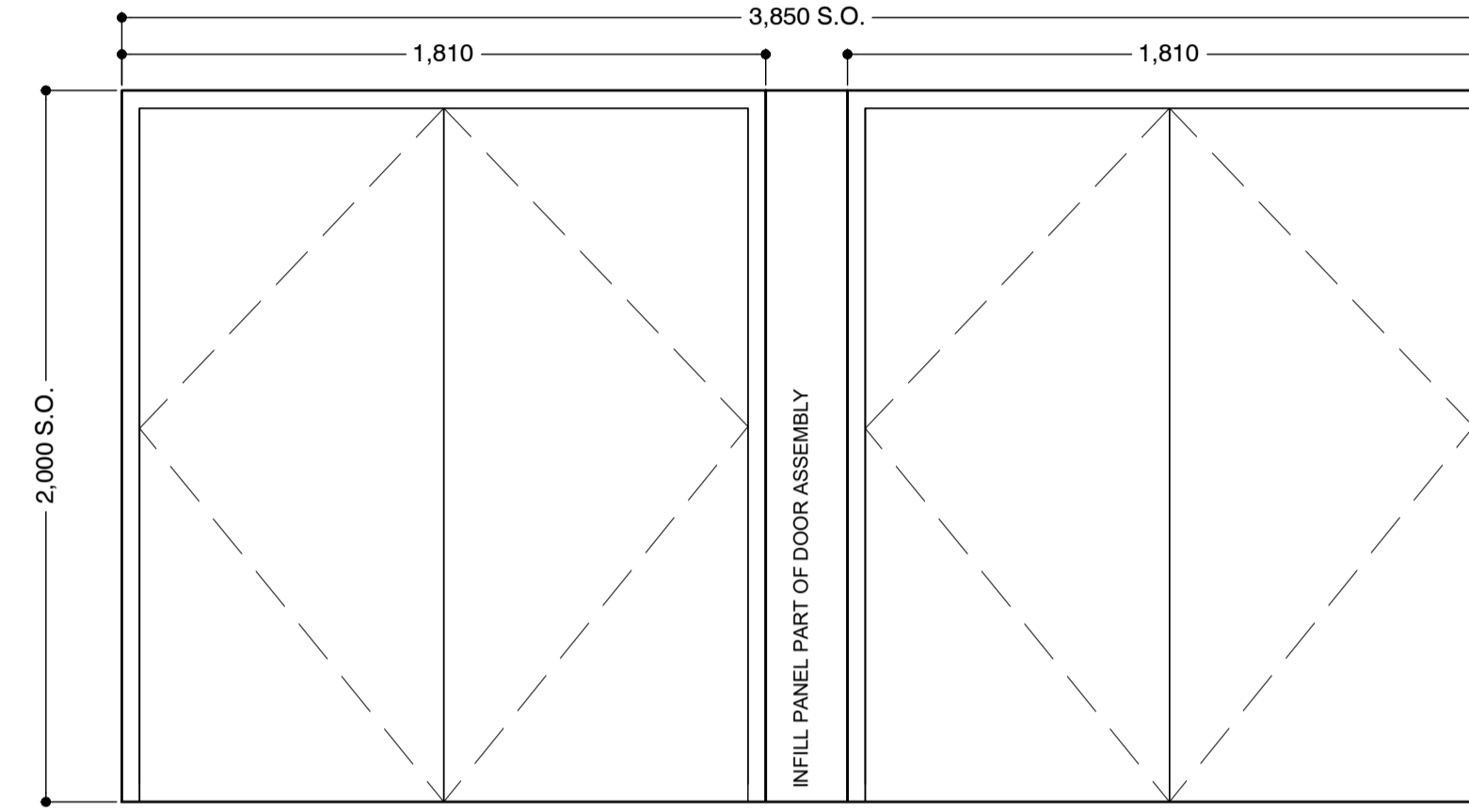
TYPE 2 GLAZED DOUBLE DOOR

SAS SPW500 THERMALLY BROKEN DOOR/FRAME SYSTEM WITH ANTI FINGER TRAP STILES COMPLETE WITH FACE APPLIED COLOUR MATCHED GEORGIAN BARS SAE25X4 WITH INTERNAL DUPLEX BARS IN GLAZING UNITS. FULL HEIGHT MIN 30MM DIA OFFSET SATIN STAINLESS STEEL HANDLES TO BOTH SIDES. ALL PANES TO BE CLEAR SAFETY GLASS



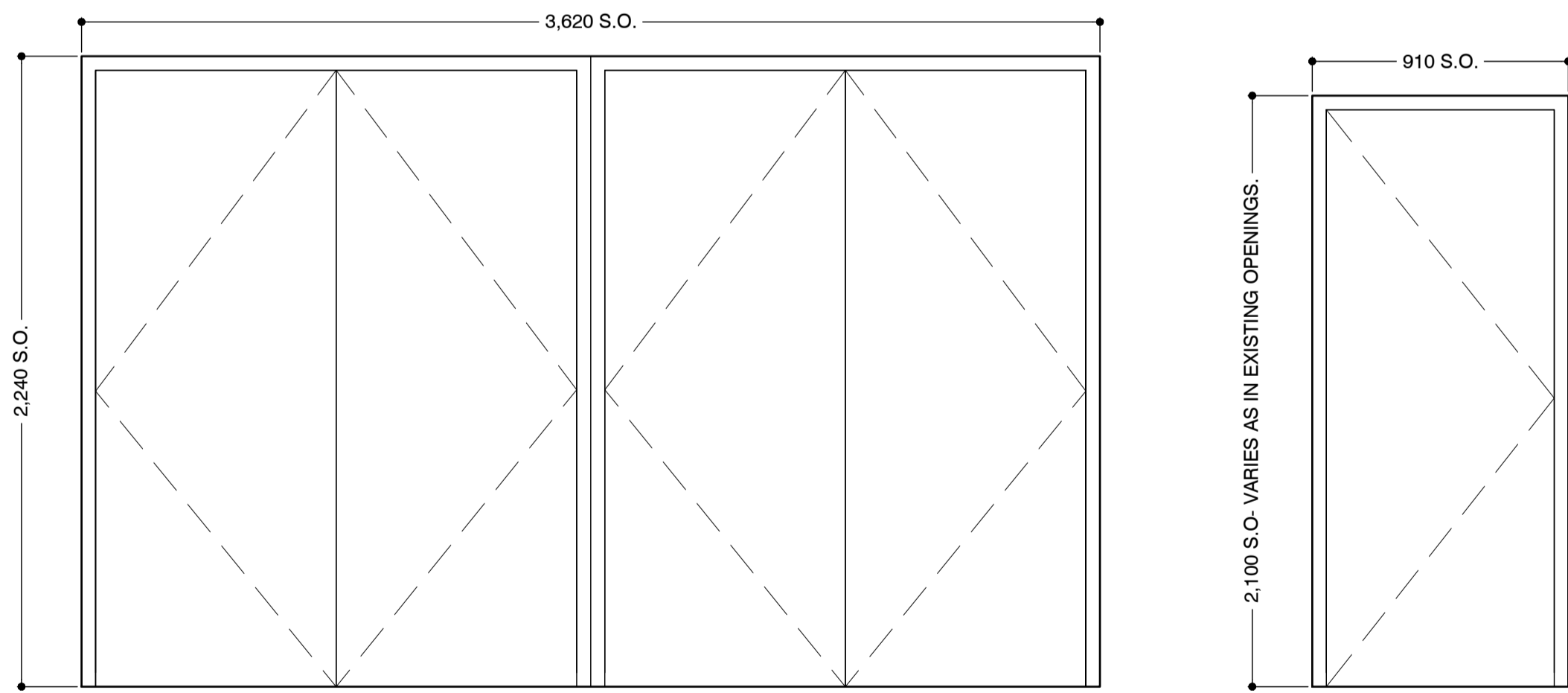
TYPE 3 DOUBLE STEEL DOORSET WITH DOUBLE GLAZED OVERPANEL

ARMOURPOST PERSONNEL STEEL DOORSET WITH SINGLE REBATE FRAME POLYESTER POWDER COATED (MINIMUM 40 MICRONS)



TYPE 4 2 No DOUBLE STEEL DOORSETS WITH FIXED CENTRAL INFILL PANEL

ARMOURPOST PERSONNEL STEEL DOORSET WITH SINGLE REBATE FRAME POLYESTER POWDER COATED (MINIMUM 40 MICRONS)

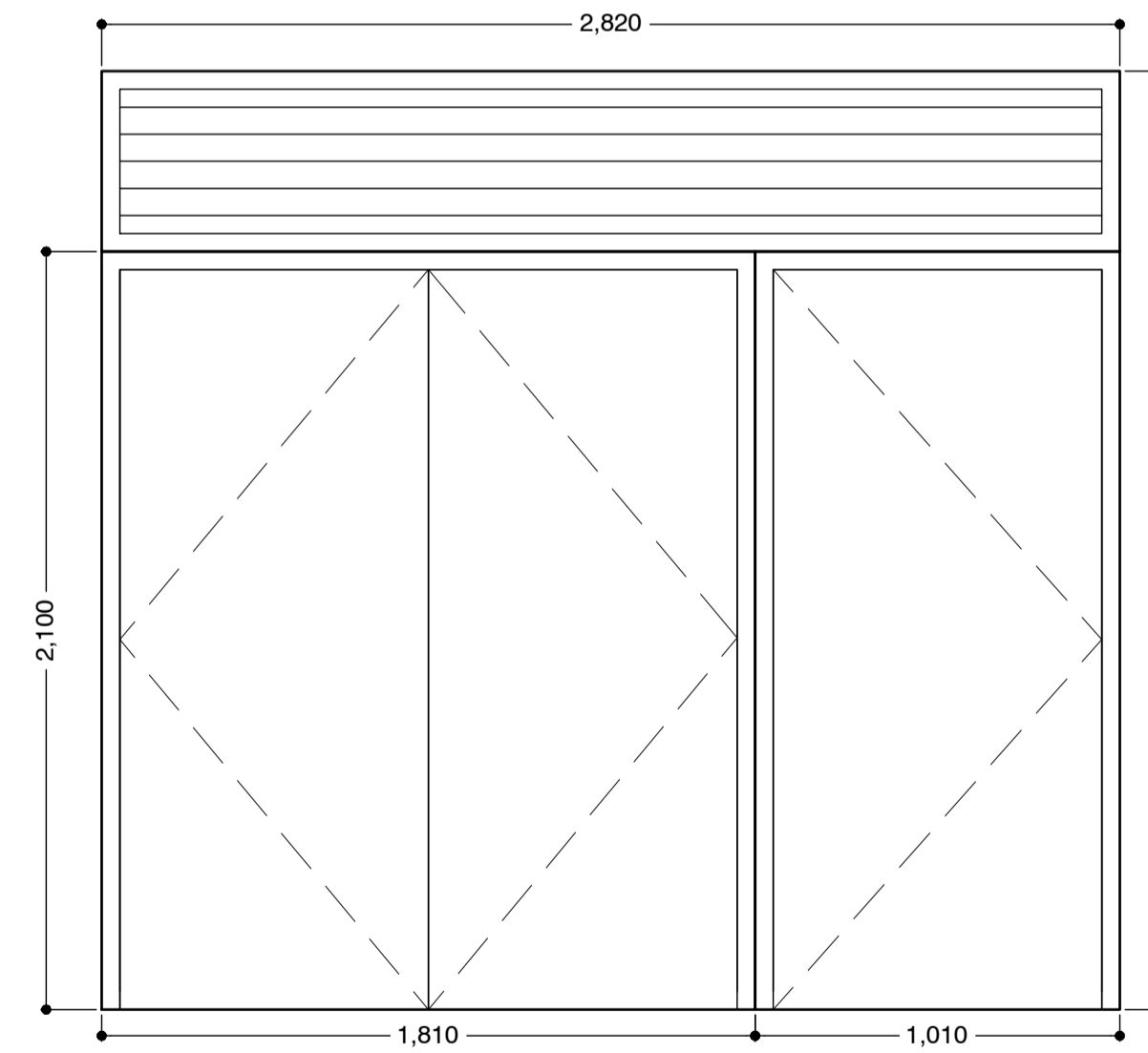


TYPE 5 2 No DOUBLE STEEL DOORSET

ARMOURPOST PERSONNEL STEEL DOORSETS WITH SINGLE REBATE FRAME POLYESTER POWDER COATED (MINIMUM 40 MICRONS)

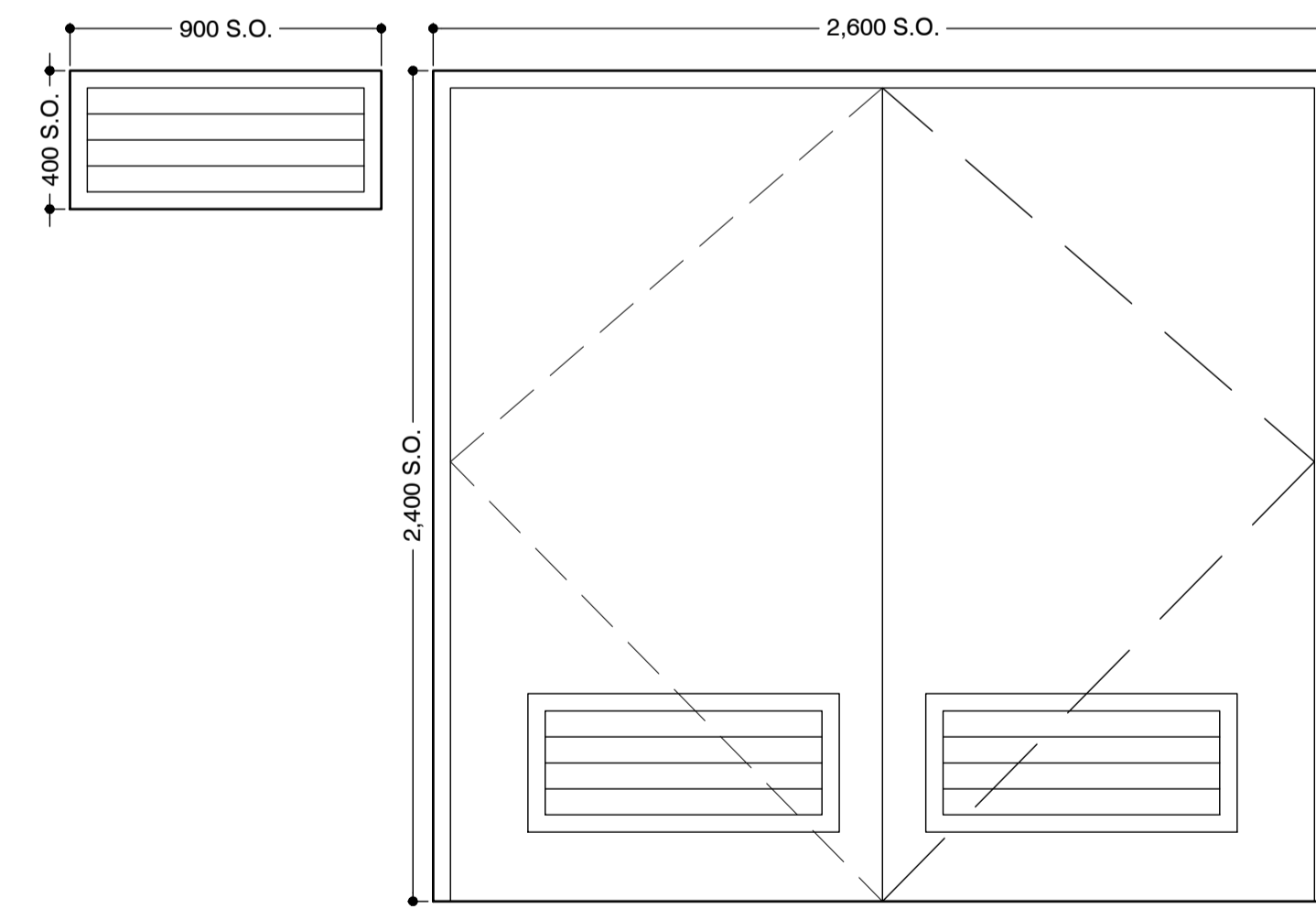
TYPE 6 SINGLE STEEL DOORSET

ARMOURPOST PERSONNEL STEEL DOORSET WITH SINGLE REBATE FRAME POLYESTER POWDER COATED (MINIMUM 40 MICRONS)



TYPE 7 COMBINED DOUBLE & SINGLE STEEL DOORSETS WITH LOUVRE PANEL WITH INSECT MESH & INSULATED BLANKING PLATE INTERNALLY

ARMOURPOST PERSONNEL STEEL DOORSETS & LOUVRES WITH SINGLE REBATE FRAME POLYESTER POWDER COATED (MINIMUM 40 MICRONS)



TYPE 8 DOUBLE DOORSET COMPLETE

WITH INTEGRAL LOUVERS & ADDITIONAL VENTILATION LOUVRE TO SUBSTATION ALL TO NPG REQUIREMENTS

PROJ	14/03/23	GLAZING BAR SPEC UPDATED	CGF	PS
PR01	22/12/22	FIRST ISSUE	JW	CGF
REV	DATE	DESCRIPTION	BY	CHK

**dunwoodieswift
architects**

CLIENT
ANSON HOUSE 12

PROJECT
**STACK DURHAM
4 SILVER STREET**

TITLE
**EXTERNAL OPENING
COMPONENTS SHEET 1 of 2**

SCALE @ A1	1:20	STATUS PRODUCTION
DRAWN BY	JW	DATE 14/02/2023
CHECKED BY	CGF	
PROJECT No.	DRAWING No.	REVISION
1049	CO-[30]-120	PR02