

NOTES
DO NOT SCALE THIS DRAWING. IF IN DOUBT ASK. THIS DRAWING IS COPYRIGHT DUNWOODIE SWIFT ARCHITECTS LTD. ALL DIMENSIONS TO BE CONFIRMED ON SITE. ANY INCONSISTENCIES TO BE REPORTED TO ARCHITECT IMMEDIATELY.

LINK MEP TO CONFIRM HORIZONTAL & VERTICAL SERVICES DISTRIBUTION ROUTES

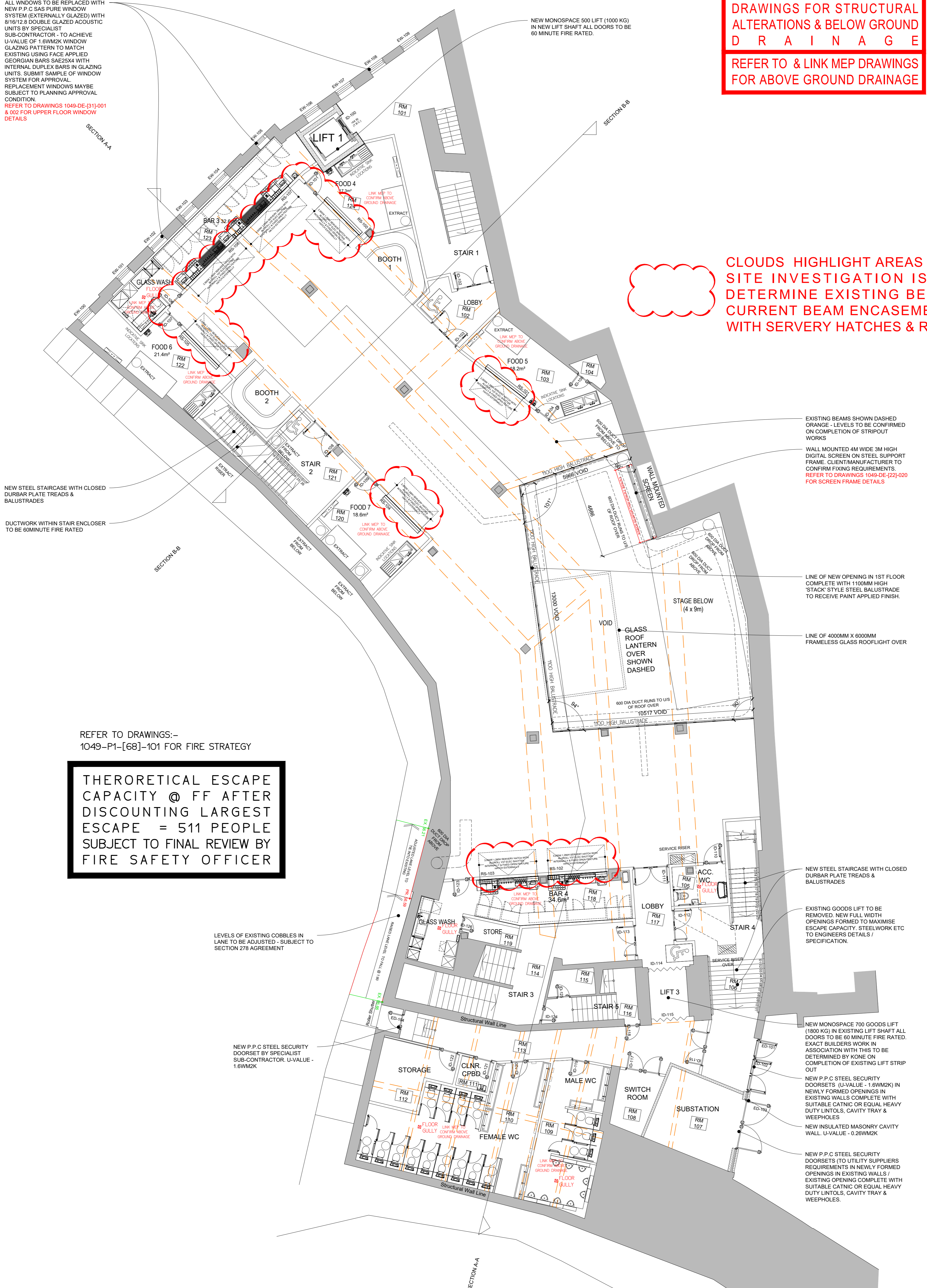
REFER TO HYDROCK 3e DRAWINGS FOR STRUCTURAL ALTERATIONS & BELOW GROUND DRAINAGE

REFER TO & LINK MEP DRAWINGS FOR ABOVE GROUND DRAINAGE

REFER TO DRAWINGS:-
1049-P0-[00]-100 FOR GROUND FLOOR GA PLAN
1049-P0-[00]-100.01 100.01 FOR ENLARGED GROUND FLOOR PLANS
1049-P1-[00]-101 FOR 1ST FLOOR GA PLAN
1049-P1-[00]-101.01 TO 101.03 FOR ENLARGED FIRST FLOOR PLANS
1049-P2-[00]-102 FOR 2ND FLOOR PLAN
1049-P2-[00]-102.01 TO 102.03 FOR ENLARGED SECOND FLOOR PLANS
1049-P3-[00]-103 FOR 3RD FLOOR PLAN
1049-P3-[00]-103.01 TO 103.03 FOR ENLARGED 3RD FLOOR PLANS
1049-P4-[00]-104 FOR ROOF PLAN
1049-DE-[22] SERIES FOR WALL TYPES
1049-DE-[22] & 1049-EL-[22] SERIES FOR INTERNAL WALL CLADDING DETAILS & ELEVATIONS
1049-DE-[24] & [34] SERIES FOR STAIRS / BALUSTRADES
1049-SC-[30] & 1049-CO-[30] SERIES FOR OPENING SCHEDULES / COMPONENTS / LINTELS
1049-P-[35] SERIES FOR REFLECTED CEILINGS
1049-P-[40] SERIES FOR BOH INTERNAL FINISHES
1049-DE-[66] SERIES FOR LIFT & SHAFT DETAILS
1049-P-[68] & 1049-DE-[68] SERIES FOR FIRE STRATEGY & DETAILS
1049-DE-[74] SERIES FOR WASHROOMS

ALL WINDOWS TO BE REPLACED WITH NEW P.P.C SAS PURE WINDOW SYSTEM (EXTERNALLY GLAZED) WITH 8/16/12 & DOUBLE GLAZED ACOUSTIC UNITS BY SPECIALIST SUB-CONTRACTOR - TO ACHIEVE U-VALUE OF 1.6W/M2K WINDOW GLAZING PATTERN TO MATCH EXISTING USING FACE APPLIED GEORGIAN BARS SAE25X4 WITH INTERNAL DUPLEX BARS IN GLAZING UNITS. SUBMIT SAMPLE OF WINDOW SYSTEM FOR APPROVAL. REPLACEMENT WINDOWS MAYBE SUBJECT TO PLANNING APPROVAL CONDITION.
REFER TO DRAWINGS 1049-DE-[31]-001 & 002 FOR UPPER FLOOR WINDOW DETAILS

NEW MONOSPACE 500 LIFT (1000 KG) IN NEW LIFT SHAFT ALL DOORS TO BE 60 MINUTE FIRE RATED.



CLOUDS HIGHLIGHT AREAS WHERE FURTHER SITE INVESTIGATION IS REQUIRED TO DETERMINE EXISTING BEAM HEIGHTS AS CURRENT BEAM ENCASUREMENTS MAY CLASH WITH SERVERY HATCHES & ROLLER SHUTTERS

EXISTING BEAMS SHOWN DASHED ORANGE - LEVELS TO BE CONFIRMED ON COMPLETION OF STRIPOUT WORKS
WALL MOUNTED 4M WIDE 3M HIGH DIGITAL SCREEN ON STEEL SUPPORT FRAME. CLIENT/MANUFACTURER TO CONFIRM FIXING REQUIREMENTS. REFER TO DRAWINGS 1049-DE-[22]-020 FOR SCREEN FRAME DETAILS

LINE OF NEW OPENING IN 1ST FLOOR COMPLETE WITH 1100MM HIGH 'STACK' STYLE STEEL BALUSTRADE TO RECEIVE PAINT APPLIED FINISH.
LINE OF 4000MM X 6000MM FRAMELESS GLASS ROOFLIGHT OVER

NEW STEEL STAIRCASE WITH CLOSED DURBAR PLATE TREADS & BALUSTRADES
EXISTING GOODS LIFT TO BE REMOVED. NEW FULL WIDTH OPENINGS FORMED TO MAXIMISE ESCAPE CAPACITY. STEELWORK ETC TO ENGINEERS DETAILS / SPECIFICATION.

NEW MONOSPACE 700 GOODS LIFT (1800 KG) IN EXISTING LIFT SHAFT ALL DOORS TO BE 60 MINUTE FIRE RATED. EXACT BUILDERS WORK IN ASSOCIATION WITH THIS TO BE DETERMINED BY KONE ON COMPLETION OF EXISTING LIFT STRIP OUT
NEW P.P.C STEEL SECURITY DOORSETS (U-VALUE - 1.6W/M2K) IN NEWLY FORMED OPENINGS IN EXISTING WALLS COMPLETE WITH SUITABLE CATNIC OR EQUAL HEAVY DUTY LINTOLS, CAVITY TRAY & WEEPHOLES
NEW INSULATED MASONRY CAVITY WALL U-VALUE - 0.26W/M2K

NEW P.P.C STEEL SECURITY DOORSETS (TO UTILITY SUPPLIERS REQUIREMENTS IN NEWLY FORMED OPENINGS IN EXISTING WALLS) EXISTING OPENING COMPLETE WITH SUITABLE CATNIC OR EQUAL HEAVY DUTY LINTOLS, CAVITY TRAY & WEEPHOLES.

REFER TO DRAWINGS:-
1049-P1-[68]-101 FOR FIRE STRATEGY

THERORETICAL ESCAPE CAPACITY @ FF AFTER DISCOUNTING LARGEST ESCAPE = 511 PEOPLE SUBJECT TO FINAL REVIEW BY FIRE SAFETY OFFICER

LEVELS OF EXISTING COBBLES IN LANE TO BE ADJUSTED - SUBJECT TO SECTION 278 AGREEMENT

NEW P.P.C STEEL SECURITY DOORSET BY SPECIALIST SUB-CONTRACTOR U-VALUE - 1.6W/M2K

REV	DATE	DESCRIPTION	BY	CHK
PR07	05/06/23	UPDATED TO REFLECT LATEST GASTRO NORTH CO-ORDINATION ADDED	CGF	PS
PR08	05/04/23	ADDITIONAL DRAWING CO-ORDINATION ADDED	JW	CGF
PR05	27/02/23	ROOM NUMBERS ADDED. ADJUSTMENTS TO MOATSIDE LANE LEVELS INDICATED. GENERAL UPDATE TO SUIT DESIGN DEVELOPMENT.	CGF	PS
PR04	31/01/23	INDICATIVE INTERNAL DUCT ROUTES & PYTHON RISERS ADDED. STAGE ARRANGEMENT UPDATED. MINOR ADJUSTMENTS TO STAIRS 2 & 4	CGF	PS
PR03	22/12/22	UPDATED TO SUIT MINOR ADJUSTMENTS TO STAIR 2 & FOOD 7. GULLEY IN GLASS WASH TO BAR 3 REPOSITIONED	CGF	PS
PR02	19/12/22	BAR LAYOUTS, INDICATIVE EXTRACTION HOODS & FOOD UNIT SINKS ADDED. EDGE OF 1ST FLOOR VOID ADJUSTED TO SUIT STRUCTURAL CONSTRAINTS.	CGF	CF
PR01	30/11/22	CHANGED TO PRODUCTION STATUS. DRAWING SHEET FORMAT UPDATE FROM A3 TO A1. GENERALLY UPDATED.	JW	CF

dunwoodieswift architects

CLIENT
ANSON HOUSE 12

PROJECT
**STACK DURHAM
4 SILVER STREET**

TITLE
**PROPOSED FIRST FLOOR
GA PLAN**

SCALE @ A1	1:100	STATUS	PRODUCTION
DRAWN BY	JW	DATE	05/04/2023
CHECKED BY	CF		
PROJECT No.	1049	DRAWING No.	P1-20-101
		REVISION	PR07

REFER TO DRAWINGS 1049-P1-[20]-101.01 1049-P1-[20]-101.02 1049-P1-[20]-101.03 FOR ENLARGED PLANS