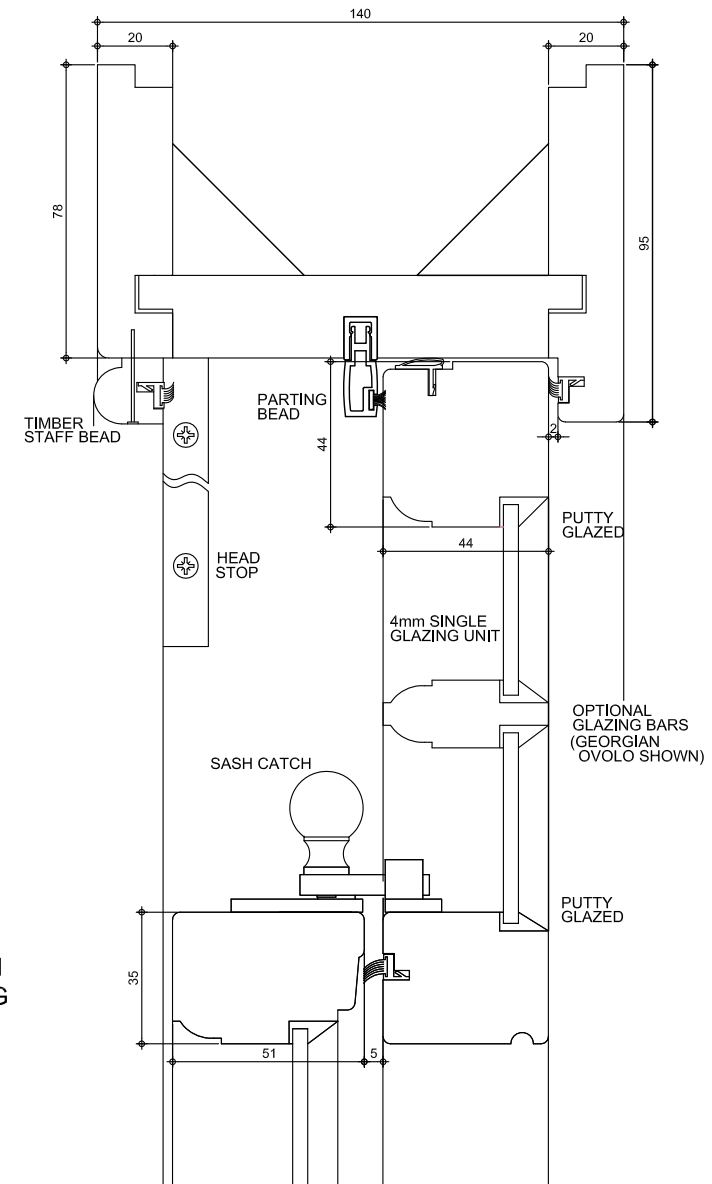


PROPOSED DETAIL

IT IS BEING PROPOSED TO REPLACE SINGLE GLAZING APPROVED UNDER APPLICATION 22/07938/FULL WITH 12MM HERITAGE DOUBLE GLAZED UNITS WHICH WILL ALLOW MAINTAINING THIN PROFILES OF GLAZING BARS



APPROVED DETAIL UNDER APPLICATION 22/07938/FULL

STANDARD SPECIFICATION:

LAMINATED LARCH, KNOT FREE ENGINEERED (CLEAR GRADE) TIMBER FROM SUSTAINABLE SOURCES TO COMPLY WITH BS 942 2000. HARDWOOD OIL SECTIONS

IRONMONGERY

SASH CATCH AND SASH LIFTS DOUBLE SECURITY LOCK WITH SECURE OPEN POSITION.

FRAME: 32MM JAMBS AND HEAD WITH 49MM EXTERNAL JAMB LINER AND 68MM FLUSH CILL. PRE-TENSIONED POWER BALANCES.

SASH PROFILE & GLAZING BARS 18MM FINE LAMBS TONGUE TO MATCH ORIGINAL.

GLASS:

SPECIFICATION: CLEAR DGU WER'B' TOUGH/TOUGH, 4,4,4. INTEGRAL WHITE SPACER BETWEEN GLAZING BARS.

PERFORMANCE SPECIFICATION: TO COMPLY WITH AD PART L, BS6375 PARTS 1 & 2, EN 1026: 200 AIR PERMEABILITY CLASS 3, EN1027:2000 WATER TIGHTNESS CLASS 7A, EN 12211: 2000 WIND CLASS C5

Status: PLANNING



VERNON ARCHITECTS
www.vernonarchitects.com

Project: 16 EATON PLACE

Title: WINDOW DETAIL
Proposed alterations to approved design

Project Number

22.08

Sketch Number

VA(PL)-650

Date
Dec 23

Scale @ A3
1:2