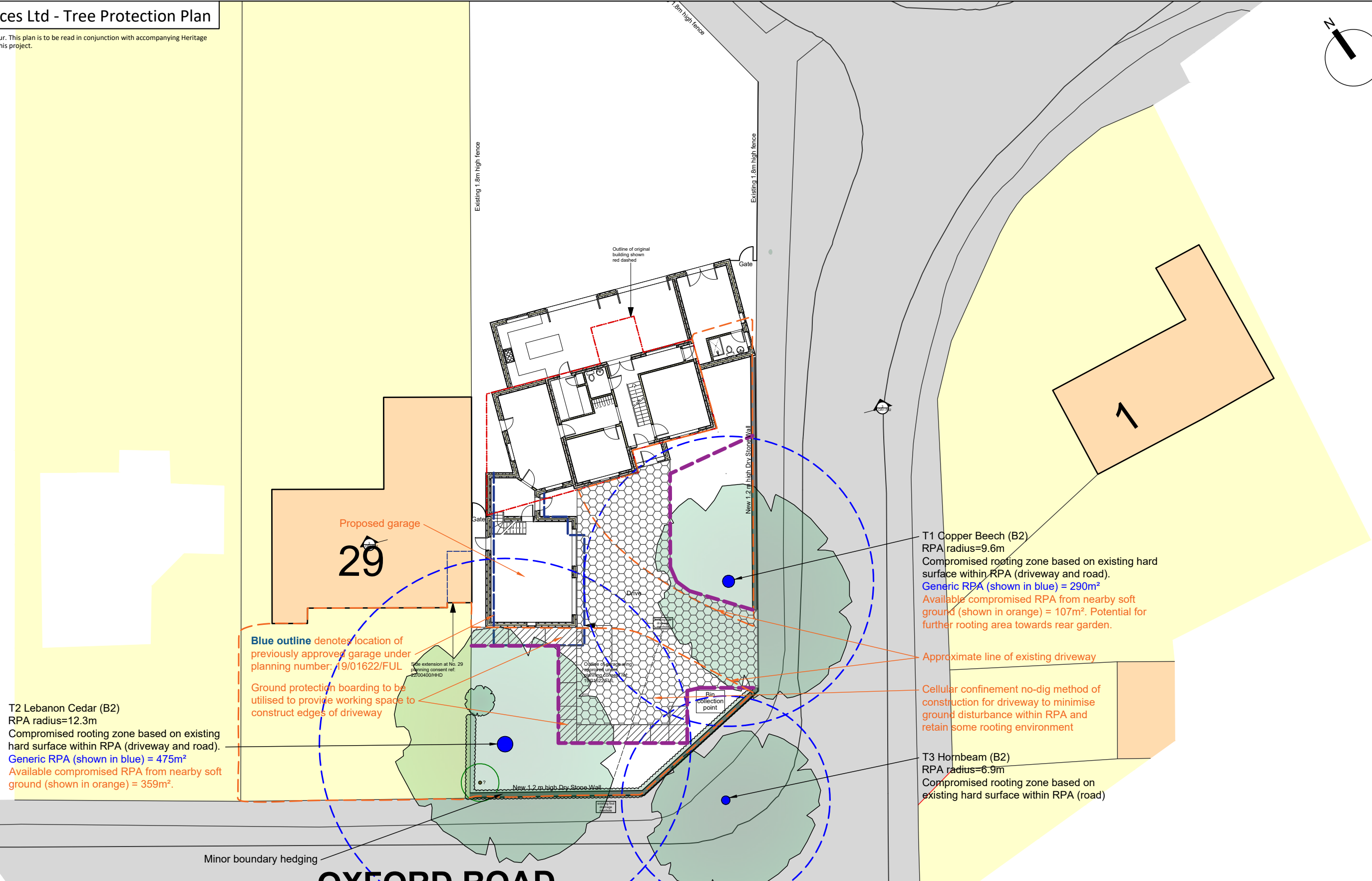
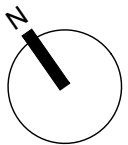


# Heritage Tree Services Ltd - Tree Protection Plan

Please note, this drawing is to be read in colour. This plan is to be read in conjunction with accompanying Heritage Tree Services Ltd documentation relating to this project.



**T2 Lebanon Cedar (B2)**  
 RPA radius=12.3m  
 Compromised rooting zone based on existing hard surface within RPA (driveway and road).  
**Generic RPA (shown in blue) = 475m<sup>2</sup>**  
 Available compromised RPA from nearby soft ground (shown in orange) = 359m<sup>2</sup>.

**Blue outline** denotes location of previously approved garage under planning number: 19/01622/FUL

Ground protection boarding to be utilised to provide working space to construct edges of driveway

**T1 Copper Beech (B2)**  
 RPA radius=9.6m  
 Compromised rooting zone based on existing hard surface within RPA (driveway and road).  
**Generic RPA (shown in blue) = 290m<sup>2</sup>**  
 Available compromised RPA from nearby soft ground (shown in orange) = 107m<sup>2</sup>. Potential for further rooting area towards rear garden.

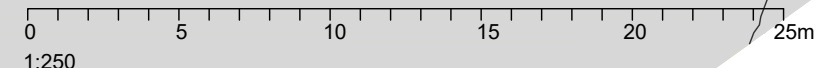
Approximate line of existing driveway

Cellular confinement no-dig method of construction for driveway to minimise ground disturbance within RPA and retain some rooting environment

**T3 Hornbeam (B2)**  
 RPA radius=6.9m  
 Compromised rooting zone based on existing hard surface within RPA (road)

Minor boundary hedging  
**OXFORD ROAD**

**Proposed site plan - 1:250 @ A3**



BS:5837 (2012) Arboricultural Key		Heritage Tree Services Ltd Professional Arboriculture T: 01491 681185 - M: 07768 113114 E: admin@heritagetreeservices.co.uk www.heritagetreeservices.co.uk	
	Canopy spread		A category tree (surveyed tree of high quality)
	Root Protection Area (RPA) (colour matches category)		B category tree (surveyed tree of moderate quality)
	Stem (colour matches category)		C category tree (surveyed tree of low quality)
	U category tree (surveyed tree unsuitable for retention)		Ground protection boarding
	Tree protection fencing		Cellular confinement 'no-dig'

Notes:  
 Canopy spreads have been estimated in metres at four cardinal points to derive an approximate representation of the crown.  
 Root Protection Areas (RPA) have been calculated from measuring the stem diameter of the tree/shrub at 1.5m above ground level, and are plotted as dotted circles around the tree stem.  
**CEZ** = Construction Exclusion Zone  
**MS** = Material Storage  
**CP** = Contractor Parking

Revision	Date	Details
A	16/01/24	Initial plan created
B	18/01/24	Minor changes to annotations

Client	Hardip Kaur
Site	31 Oxford Road, Woodstock OX20 1UN
Drawing Title	Tree Protection Plan
DWG No.	HTS-TPP-01B
Scale	1:250@A3
Date	18/01/24