



APPENDIX C

Material Specifications



GP[®]5

GP[®]5 gas barrier is a multi-layer composite of virgin polyethylene (PE) giving exceptional resistance to the passage of ground gas and organic vapours. It also acts as a high performance DPM.

Thickness	0.4 mm
Width	Various m
Length	Various m
Weight	400 g/m ²

TITANTECH[®]

For developers of brownfield and contaminated sites the TITANTECH[®] family of products represent a major step forward in safeguarding projects against gaseous and chemical contamination.

GP[®]5 is suitable for the following applications:

- Carbon dioxide and methane affected sites in accordance with BS 8485:2015 + A1:2019 & NHBC
- Radon affected sites in accordance with BRE211:2015
- Damp protection in accordance with Building Regulations Part C
- Low level VOC contaminated sites (site specific assessment required)

Handling

Roll weights can be in excess of 20kg and hence appropriate care and equipment is required for unloading and handling.

Installation

GP[®]5 should be installed in accordance with the product installation guidelines, and in accordance with BS 8485:2015.





Feature	Characteristics	Test Method	GP ⁵
Physical Properties	Thickness	EN 1849-2	0.4 mm
	Width	EN 1849-2	Various m
	Length	EN 1849-2	Various m
	Weight	EN 1849-2	400 g/m ²
Hydraulic Press	Resistance to Water Penetration	EN 1928 (A)	Pass
Mechanical Properties	Resistance to Static Load	EN 12730	> 20 kg
	Tensile Strength (MD)	EN 12311-2 (A)	> 300 N/50mm
	Tensile Strength (CMD)	EN 12311-2 (A)	> 300 N/50mm
	Resistance to Tearing (Nail Shank) MD	EN 12310-1	> 230 N
	Resistance to Tearing (Nail Shank) CMD	EN 12310-1	> 230 N
	Impact Resistance	EN 12691-B	500 mm
	Puncture Resistance	ASTM D 4833	> 160 N
	Puncture Resistance	EN 12236	1.60 kN
	Reaction to Fire	EN 13501-1	E
Vapour Permeability	Methane Permeability	BS EN ISO 15105-1	0.12 ml/m ² /day/atm
	Carbon Dioxide Permeability	BS EN ISO 15105-1	1.53 ml/m ² /day/atm
	Hydrogen Permeability	BS EN ISO 15105-1	68.7 ml/m ² /day/atm
	Benzene Permeability	BS EN ISO 15105-2	0.41 ml/m ² /day
	Oxygen Permeability	BS EN ISO 15105-2	<3 ml/m ² /day
	Radon Permeability	K124/02/95	1.0 x 10 ⁻¹² m ² /s
Fuel Vapour Permeability	Petrol	BS EN ISO 15105-2	(ave.) 3.4 x 10 ⁻¹³ /mol/(m ² .s.Pa)
	Diesel	BS EN ISO 15105-2	(ave.) 3.4 x 10 ⁻¹³ /mol/(m ² .s.Pa)
Durability	Durability Watertightness After Artificial Ageing	EN 1928	Pass
	Durability Watertightness Against Chemicals	EN 1928	Pass
Compliance and Certification	CE Mark - EN 13967:2012		
	NHBC Standards Compliant		
	BS 8485:2015 + A1 2019 Accordant		

JUTA UK

Please contact JUTA UK Directly for more information on GP⁵

Storage

Rolls of GP⁵ should be stored on stable/level ground and stacked not more than five rolls high, with no other material stacked on top. The rolls can be stored outdoors when packaged, but should be protected from exposure to UV.



JUTA UK

Please contact JUTA
UK Directly for more
information on GP[®]5

Jointing and Sealing

It is recommended GP[®]5 can be heat welded where possible, with welding carried out by competent personnel with suitable qualifications in accordance with best practice, and guidance contained within BS 8485:2015. GP[®]5 should be overlapped by at least 100mm. If taping joints, only suitable tape must be used, ensuring application with a silicone roller to remove trapped air. JUTA pre-formed details, or self adhesive gas membrane are available for sealing around protuberances.

Accessory Products

- GP[®] DPC
- GP[®] Tape
- GP[®] Self Adhesive Membrane (SAM)
- GP[®] Primer
- GP[®] Top Hats and Preformed Corners
- GP[®] Protection Fleece
- GP[®] Void Vent (24/40mm)



JUTA GRSAM is a self-adhesive bituminous waterproofing sheet 1.0kgm/2 composed of a self adhesive SBS polymer modified bitumen with an upper surface finish of aluminium foil to provide resistance to methane, radon and carbon dioxide and a lower surface finish of siloconated polypropylene release film. Product used for the waterproofing of underground walls where potentially harmful gases are located.

TECHNICAL DATA	VALUE	UNIT	STANDARD
Watertightness	PASS		EN1928
Longitudinal Tensile Strength	200	N/5cm	EN12311-1
Transversal Tensile Strength	200	N/5cm	EN12311-1
Joint Strength: Shear Resistance	200		EN12317-1
Flexibility at Low Temperature	<-15	DEGREES CELCIUS	EN 1109
Humidity Resistance Factor	150000		EN1931
Radon Diffusion	5.0 x 10 ⁻¹⁴	m ² /s	

ADDITIONAL DATA	VALUE	UNIT	STANDARD
Mass Per Unit Area (nominal)	1	KG/M2	
Nominal Thickness	1.5	MM	
Flow Resistance at Elevated Temperature	>70	DEGREES CELCIUS	EN1110

PACKAGING	VALUE	UNIT	
Length	20	m	
Width	1	m	
Roll Surface	20	m ²	
Rolls per pallet	20	rolls	

Standards and Certification

Meets the requirements of the CTE
 Meets the requirements of the EN 13707
 Meets the requirements of the EN 13969
 Meets the requirements of CE Marking
 Meets the requirements of EN 13859-1 and EN 13859-2 norms

Recommendations

JUTA GRSAM should not be applied in temperatures below 10 degrees celcius, in colder weather the material can be warmed slightly to aid adhesion
 Must be stored in a cool, dry place protected from rain, sun, heat and cold temperatures
 If the product is exposed to sunlight there may be difficulty in the removal of the polyethylene release film

Advantages and Benefits

Totally impermeable to water and water vapour
 High amount of flexibility to aid ease of application
 High resistance to weathering both at high and low temperatures
 Resistant to UV
 Strong adhesive bonds on different types of surfaces - concrete, metal, tile, block, brick ect
 Quick and easy application as theres no requirement for it to be torched on

Surface Preparation

The surface that the material is applied to must be durable, smooth, clean, dry and free from any foreign bodies
 Having a clean dry surface is essential to create the required adhesion between the product and the surface
 In the case of the surface being porous or metal its recommended a bitumen primer is applied prior to membrane application

Handling and Storage

This product is non toxic nor flammable
 The product should be stored horizontally and pallets should not be stacked on top of one another

GP[®] PRIMER

Rev: June 2019



Ground Gas Protection

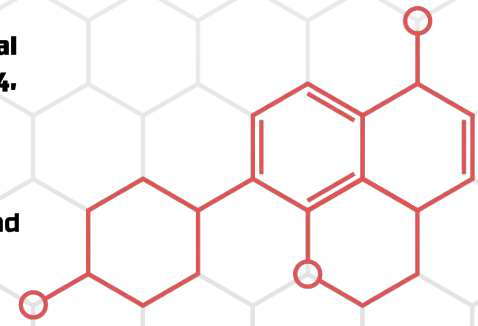
JUTA GP[®] (quick drying) PRIMER is a cold applied bituminous solution designed to penetrate and seal porous surfaces prior to the application of covering materials. Conforms to BS Code of Practice 144, Part 3.

Uses

GP[®] Primer seals porous substrates and encourages the adhesion of bituminous waterproofing systems and sheet coverings. It may be applied successfully to a wide range of surfaces:

- CONCRETE
- ASBESTOS CEMENT
- SLATE
- METALS (mild steel, Zinc, Lead)
- LIGHTWEIGHT CONCRETE SCREEDS

GP[®] PRIMER is available in 5 Litre and 25 litre containers.



GP [®] PRIMER	
Colour	Black
Coverage	
Metal Surfaces	6 - 11 m ² per litre
Concrete	3 - 4 m ² per litre
Bituminous	5 - 8 m ² per litre
Drying time	Allow to dry completely before subsequent installation begins. Drying time is dependent on ambient air temperature, atmospheric conditions and porosity of the substrate. Average drying time at 20°C is between 2 - 6 hours.

APPLICATION

Apply by brush or spray

Surfaces should be clean, ie. Free from all oil, grease, dirt, dust and loose debris. On metal surfaces all loose rust should be removed using a wire bristled brush and where advanced signs of corrosion are evident these areas should initially be treated with a rust inhibitor. Surfaces should preferably be dry although GP[®] PRIMER will adhere to damp but not wet surfaces. GP[®] PRIMER should be applied evenly across the surface in one generous coating.

STORAGE

Storage life indefinite in tightly sealed, undamaged containers.

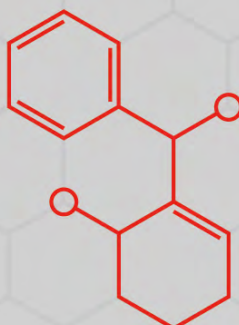
HEALTH AND SAFETY

Refer to Material Safety Data Sheet (MSDS) for a full list of hazards.

ADDITIONAL INFORMATION

For additional information or assistance, please contact JUTA UK directly.

Contact us to find out more information.
info@juta.co.uk | 01772 754177 | JUTA.CO.UK
Melton Grove Works, Church Road, Lytham, FY8 5PL



JUTA



riba
product
selector



APPENDIX D

Project Survey Sheets

INDEPENDENT INSPECTION & VALIDATION CERTIFICATE OF CONFORMANCE

DATE: 12.6.2023

PROJECT NAME: 30, Radford Way, Billericay.

CONTRACT NO: C897 - Retro-Fit Installation for the Gas Mitigation Measures
See Attached Mark-ups for Areas Completed

INSPECTION, VALIDATION & INTEGRITY TESTING DETAILS:

MTS Ltd were requested to attend site to inspect/validate the membrane installed to the above mentioned area. On initial inspection our validation surveyor noted that the membrane had been laid and formed well. Our surveyor then using a seam pick tool, inspected all welded seams, checking for integrity and membrane for any damage or defects, then checking overlaps and for correct specification. Our surveyor then inspected all gas resistant self-adhesive membrane to seal the perimeter formation, service entries, pillars and the like. Checking for the correct adhesion and specified overlaps etc. Lastly our surveyor inspected all bitumen based sealer was applied to all C channels and fixing screws. All was installed well however, 18 defects were found and repaired immediately. The defects were marked up and immediately repaired. The repairs were validated proving a pass. Photo evidence of all the above has been taken for inclusion into the final report. All membrane was installed to design specification. Areas in red on the mark-ups are discounted from this cert.

MembraneTestingSolutions Ltd hereby confirm that the elements of the project detailed above have been inspected and validated by a suitably qualified independent consultant in accordance with industry requirements, with the test result noted below:

CONCLUSION (PASS/FAIL) **PASS IN FULL**

Where the conclusion above indicates a Pass, the construction activities may proceed subject to suitable protection measures of the membrane being applied in accordance with the manufacturers recommendations.

Signed for on behalf of **MembraneTestingSolutions Ltd**

Name: Michael A Smith

Dated: 12.6.2023

Signed for on behalf of The Client:

Name: Neil McNamara

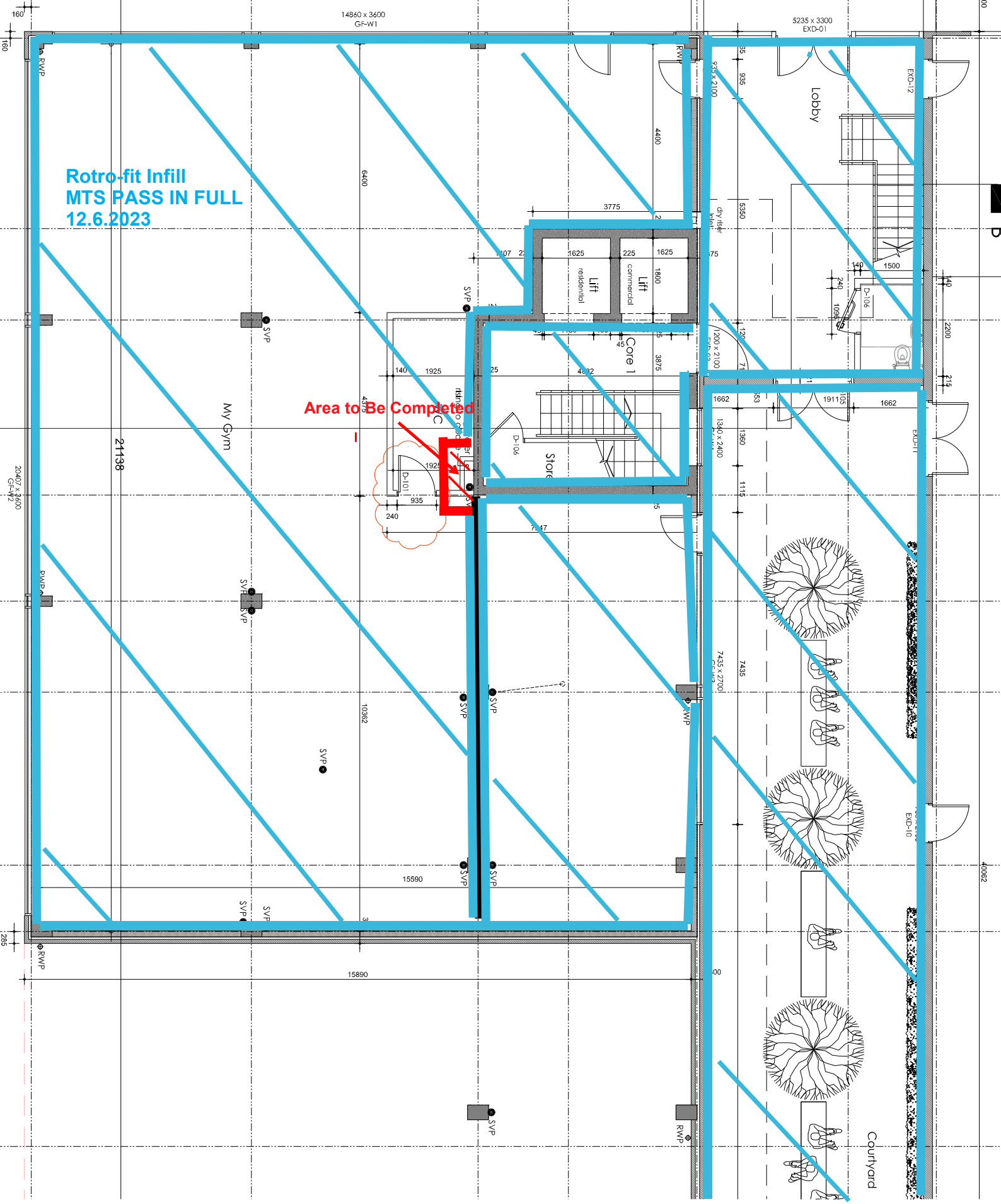
Dated: 12.6.2023

Membrane Testing Solutions Limited • The Studio, Parsonage House, Parsonage Street, Halstead, Essex CO9 2JR

Telephone: 0844 557 3786 • email: sales@mtsltd.net • www.mtsltd.net

Retro-fit Infill
MTS PASS IN FULL
12.6.2023

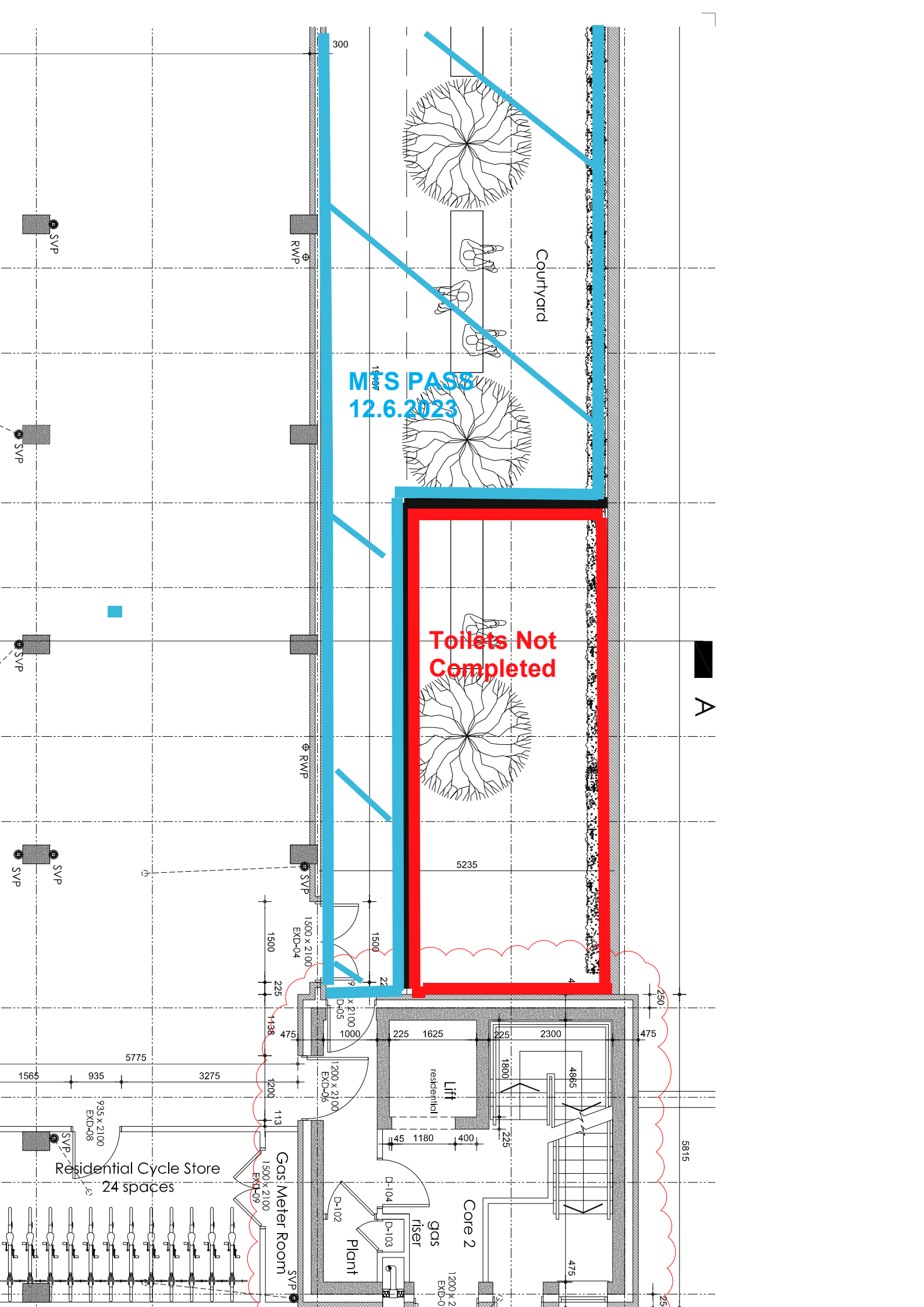
Area to Be Completed



Rev	A	B	C	D	E	F	G	H	I	J	K	L	M
Not													



THH
CII
Pro



Courtyard

MFS PASS
12.6.2023

Toilets Not
Completed

A

5235

5815

5775

1565 935 3275

Residential Cycle Store
24 spaces

Gas Meter Room

Plant

Core 2

Lift
residential hall

1500 x 2100
EXD-04

1200 x 2100
EXD-06

1200 x 2
EXD-0

935 x 2100
EXD-08

1500 x 2100
EXD-09

RWP

RWP

RWP

RWP

RWP

SVP

SVP

SVP

SVP

SVP

SVP

1500

1500

1500

1500

1500

1500

1500

1500

1500

1500

1500

1500

1500

1500

1500

1500

1500

1500

1500

1500

1500

1500

1500

1500

1500

1500

1500

1500

1500

225

225

225

225

225

225

225

225

225

225

225

225

225

225

225

225

225

225

225

225

225

225

225

225

225

225

225

225

225

475

475

475

475

475

475

475

475

475

475

475

475

475

475

475

475

475

475

475

475

475

475

475

475

475

475

475

475

475

1138

1138

1138

1138

1138

1138

1138

1138

1138

1138

1138

1138

1138

1138

1138

1138

1138

1138

1138

1138

1138

1138

1138

1138

1138

1138

1138

1138

1138

2501

2501

2501

2501

2501

2501

2501

2501

2501

2501

2501

2501

2501

2501

2501

2501

2501

2501

2501

2501

2501

2501

2501

2501

2501

2501

2501

2501

2501

25

25

25

25

25

25

25

25

25

25

25

25

25

25

25

25

25

25

25

25

25

25

25

25

25

25

25

25

25

INDEPENDENT INSPECTION & VALIDATION CERTIFICATE OF CONFORMANCE

DATE: 19.6.2023

PROJECT NAME: 30, Radford Way, Billericay.

CONTRACT NO: C897 - Retro-Fit Installation for the Gas Mitigation Measures For Toilets and Incomplete Service entry Area. See Attached Mark-ups for Areas

INSPECTION, VALIDATION & INTEGRITY TESTING DETAILS:

MTS Ltd were requested to attend site to inspect/validate the membrane installed to the above mentioned area. On initial inspection our validation surveyor noted that the membrane had been laid and formed well. Our surveyor then using a seam pick tool, inspected all welded seams, checking for integrity and membrane for any damage or defects, then checking overlaps and for correct specification. Our surveyor then inspected all gas resistant self-adhesive membrane to seal the perimeter formation, service entries, pillars and the like. Checking for the correct adhesion and specified overlaps etc. Lastly our surveyor inspected all bitumen based sealer was applied to all C channels and fixing screws. All was installed well however, 1 defect was found at the toilet area and repaired immediately. The defect was marked up and immediately repaired. The repair was validated proving a pass. Photo evidence of all the above has been taken for inclusion into the final report. All membrane was installed to design specification. Areas in red on the mark-ups are discounted from this cert.

MembraneTestingSolutions Ltd hereby confirm that the elements of the project detailed above have been inspected and validated by a suitably qualified independent consultant in accordance with industry requirements, with the test result noted below:

CONCLUSION (PASS/FAIL) **PASS IN FULL**

Where the conclusion above indicates a Pass, the construction activities may proceed subject to suitable protection measures of the membrane being applied in accordance with the manufacturers recommendations.

Signed for on behalf of **MembraneTestingSolutions Ltd**

Name: Michael A Smith

Dated: 19.6.2023

Signed for on behalf of The Client:

Name: Neil McNamara

Dated: 19.6.2023

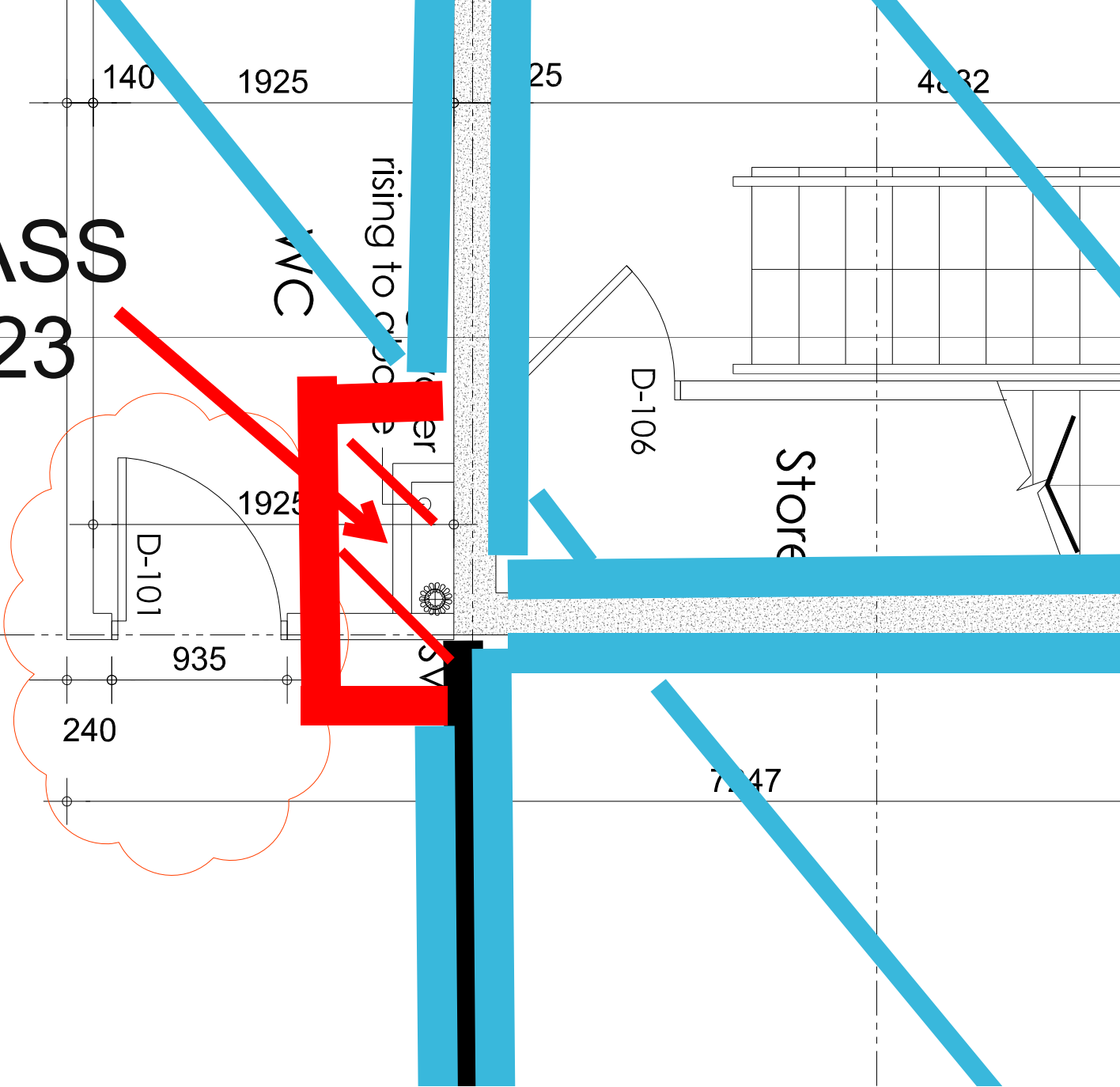
Membrane Testing Solutions Limited • The Studio, Parsonage House, Parsonage Street, Halstead, Essex CO9 2JR

Telephone: 0844 557 3786 • email: sales@mtsltd.net • www.mtsltd.net

MTS PASS

4373

19.6.2023



MV GVM

SVP



APPENDIX E

Indicative Installation & Validation Photographs

(Can Be Found Contained on The USB Storage Device)

APPENDIX 4 – CLIENT CORRESPONDENCE

Stuart Jones

Subject: FW: P2647J1906 - TE - Radford Way: Contaminated land

From: Matthew Evans

Sent: Tuesday, November 14, 2023 3:57 PM

To: te@jomasassociates.com

Cc: James Steel <james.steel@berrys.uk.com>; francois@zddesign.co.uk; kevmoo1955@hotmail.co.uk; 'Saeed' <saeed@saskgroup.com>

Subject: Contaminated land

Tom,

As per meeting find below and attached:

Top soil

We have 20 tonnes of soil delivered from JAC – See email correspondence. Attached (Gras, tippers & concrete). We also had 1 ton bag as top up from PGR Timber – See PGR quotation.

Gas membrane

See attached Juta membrane installed to the ground floor and the GPS certificate showing the installers work was independently checked and verified.

Incoming waterpipe

I can confirm that all water pipe used on this development was 63mm barrier pipe. See certificate x132414_1_30 showing the testing of the water showing this was barrier pipe.

Further contamination issues

I can confirm that during excavation works no contamination issues were found extra to those already identified.

WTN

Find attached WTN from site for the areas in the car park addressed in the SI report.

Other waste was removed by :

George Killoughery Ltd
Beacon hill Industrial Estate,
Botany Way,
Purfleet
RM19 1SR

T: 01708 860 601

The only outstanding item would be the gas membrane to the basement. Will speak to John Gallagher about this when he is back in the office and forward you this information on.

If you need anything else please let me know.

Regards

Matt Evans

Project Manager

Clontara Developments Ltd

Project: 30 Radford Way, Billericay, CM12 0DA

Head Office

Parkway House

Sheen Lane

SW14 8LS

Tel: 0208 8782600

Mob: 07738 337 086

E: mevans@clontara.co.uk

W: www.clontara.co.uk

APPENDIX 5 – WATER PIPE DOCUMENTAITON



PGR Builders & Timber Merchants

Denbigh Road, Laindon, Basildon, Essex, SS15 6PY

Tel 01268 334455

Web www.pgrtimber.co.uk

Email Sales@pgrtimber.co.uk

Quote No.	SQU00102320
Quote Date	28/09/2023
Method	Delivery
Requested Time	No Time Specified
Your Ref.	
Customer No.	053285
Taken By	Joe Simpson
Page	1/1 Ver. 5

Invoice to:

SSK UK RE INC
91-97 Stadium Way
Benfleet
ESSEX
SS7 3BN

Deliver to:

91-97 Stadium Way
Benfleet
ESSEX
SS7 3BN

Supersedes and replaces previous documents

Delivery Instructions:

Quotation

Item Code	Description	Quantity	Unit	List Price Ex VAT	Discount	Net Price	Total Ex VAT
34545	BSS Bullnose Kerb BN3 125x150x914mm Marshalls	2	Each	£18.93	58.00%	£7.95	£15.90
29486	Melcourt Topsoil Blended Loam Bulk Bag BS 3882 : 2015	1	BAG	£77.99	9.00%	£70.97	£70.97

Please Note These Prices Are Valid for 7 Days From The Quotation Date.

Total Goods	£86.87
Carriage	£0.00
VAT	£17.37
Total	£104.24

Bacs Payments To PGR Timber:
Account No: 68725337
Sort Code: 600239

No liability is accepted when the driver is directed onto or over private property. All goods remain the property of the company until paid for in full. Delivery shortages or damaged goods must be reported within 48 hours. Please note all non-stock goods are non-returnable. Full T&C's available.

APPENDIX 6 – CONSIGNMENT NOTES FOR WASTE DISPOSAL OFF-SITE

SALES INVOICE

PO Box 232, Upminster RM14 3WW

Phone: 020 8596 9880 Yard: 020 8596 9530 Mobile: 07966 195105

office@mlonghaulage.co.uk www.mlonghaulage.co.uk

Date / Tax Point: 21/03/2023

Invoice No: 12055

Ref. No: H38

Hunter Environmental Services LTD
641 North Circular Road
London
NW2 7AY

Muckaway Haulage and Tipped
10mm Recycled Shingle Supplied & Delivered
Radford Way Billericay - 16.03.2023 - 17.03.2023

Muckaway - 52446 - 52447 - 52448 - 52449 - 52983 - 52985

52987 - 52989 - 52991 - 52993 - 52995 - 52997 - 52999 - 48301

10mm Shingle - 53000

Quantity	Unit Price	Net Amount
14.00	300.00	4,200.00
17.58	29.00	509.82

TOTAL NET £ 4,709.82

VAT @ 20% 941.96

INVOICE TOTAL £ 5,651.78

BANK DETAILS

Sort Code:
60-50-09
Account Number:
38296144

Company No:
07245014

VAT Registration No:
990 5213 17

ALL QUERIES REGARDING THIS INVOICE MUST BE NOTIFIED IN WRITING
WITHIN 14 DAYS OF INVOICE DATE

VOLUMETRIC MIXERS • CONCRETE PUMP • TIPPERS • GRABS





M LONG HAULAGE & DAUGHTERS LTD

THUNDERER ROAD
Off HINDMANS WAY
DAGENHAM DOCK
RM9 6LB

OFFICE 0208 596 9880
YARD 0208 596 9530
MOBILE 07966 195105

DATE

16-3-23

Website www.mlonghaulage.co.uk

Email office@mlonghaulage.co.uk

GRAB	
REG	EF17 XHX
DRIVER	Steve

TIPPER	
TICKET NUMBER	
52446	

PRODUCT	
	Type 1 Sub-base to Clause 803 S.H.W.
	Type 2 Sub-base to Clause 804 S.H.W.
	10mm 500 Series S.H.W.
	20mm 600 Series S.H.W.
	6F1 - 600 Series S.H.W.
	6F2 - 600 Series S.H.W.
	6F4 - 600 Series S.H.W.
	6F5 - 600 Series S.H.W.
	Ballast for foam concrete, grading to BSEN
	12620 as per clause 1043 S.H.W.

WASTE		
	Concrete/EWC	17-01-01
	Brick/EWC	17-01-02
	Tiles & Ceramics/EWC	17-01-02
	Mixture - Concrete, Brick, Tiles & Ceramic / EWC	17-01-07
	Soil & Stones/EWC	17-05-04
	Road Base & Planings/EWC	17-05-04
	Track Ballast/EWC	17-05-08
	Mixed Construction & Demolition Waste EWC	38247
	Waste Gravel and Crushed Rock	10408
	Waste Sand and Clays	10408

OTHER MATERIAL WASTE	m/a
-----------------------------	-----

COLLECTION	DELIVERY
Time On Site 12:00	Time On Site
Time Loaded 13:10	Time Loaded
Waiting Time	Waiting Time

Weights & Measures act 1985 Schedule 4, Paragraph 7

Neptune Contract Services:-

Aggregate produce in accordance with WRAP protocol

M Long Haulage & Daughters Ltd

Customer ordering vehicles off the public road do so entirely on their own responsibility. We cannot accept responsibility for any damage caused by our vehicles when collecting or delivering off road.

I confirm that I have fulfilled my duty to apply the waste hierarchy as required by regulation 12 of the Waste (England and Wales) Regulations 2011.

NEPTUNE TIPPING PERMIT NO:- EPR/DB3806UM
M LONG HAULAGE & DAUGHTERS LTD
WASTE CARRIERS NUMBER :- CBDU115956

COLLECTION	
CUSTOMER	Hunter Plant hire
ADDRESS	30, Radford Way Billerica CM12 0DA
SIGN	EWK
PRINT	

TIPPING/DELIVERING	
CUSTOMER	Brook Farm
ADDRESS	Ingateskore R.D
SIGN	
PRINT	



M LONG HAULAGE & DAUGHTERS LTD

THUNDERER ROAD
OFF HINDMANS WAY
DAGENHAM DOCK
RM9 6LB

OFFICE 0208 596 9880
YARD 0208 596 9530
MOBILE 07966 195105

DATE **16-3-23**

Website www.mlonghaulage.co.uk

Email office@mlonghaulage.co.uk

GRAB	
REG	EF17 XHX
DRIVER	STEVE

TIPPER	
TICKET NUMBER	
52447	

PRODUCT	
	Type 1 Sub-base to Clause 803 S.H.W.
	Type 2 Sub-base to Clause 804 S.H.W.
	10mm 500 Series S.H.W.
	20mm 600 Series S.H.W.
	6F1 - 600 Series S.H.W.
	6F2 - 600 Series S.H.W.
	6F4 - 600 Series S.H.W.
	6F5 - 600 Series S.H.W.
	Ballast for foam concrete, grading to BSEN
	12620 as per clause 1043 S.H.W.

WASTE		
	Concrete/EWC	17-01-01
	Brick/EWC	17-01-02
	Tiles & Ceramics/EWC	17-01-02
	Mixture - Concrete, Brick, Tiles & Ceramic / EWC	17-01-07
	Soil & Stones/EWC	17-05-04
	Road Base & Planings/EWC	17-05-04
	Track Ballast/EWC	17-05-08
	Mixed Construction & Demolition Waste EWC	38247
	Waste Gravel and Crushed Rock	10408
	Waste Sand and Clays	10408

OTHER MATERIAL WASTE	M/A
-----------------------------	-----

COLLECTION	DELIVERY
Time On Site	Time On Site
Time Loaded	Time Loaded
Waiting Time	Waiting Time

Weights & Measures act 1985 Schedule 4, Paragraph 7

Neptune Contract Services:-
Aggregate produce in accordance with WRAP protocol
M Long Haulage & Daughters Ltd
Customer ordering vehicles off the public road do so entirely on their own responsibility. We cannot accept responsibility for any damage caused by our vehicles when collecting or delivering off road.
I confirm that I have fulfilled my duty to apply the waste hierarchy as required by regulation 12 of the Waste (England and Wales) Regulations 2011.

NEPTUNE TIPPING PERMIT NO:- EPR/DB3806UM
M LONG HAULAGE & DAUGHTERS LTD
WASTE CARRIERS NUMBER :- CBDU115956

COLLECTION	
CUSTOMER	Hunter Pnt
ADDRESS	30, Radford Way Billericay S.M.I.Z
SIGN	Guy
PRINT	

TIPPING/DELIVERING	
CUSTOMER	Brook Farm
ADDRESS	Ingatesstone R.D
SIGN	
PRINT	



M LONG HAULAGE & DAUGHTERS LTD

THUNDERER ROAD
Off HINDMANS WAY
DAGENHAM DOCK
RM9 6LB

OFFICE 0208 596 9880
YARD 0208 596 9530
MOBILE 07966 195105

DATE

16-3-23

Website www.mlonghaulage.co.uk

Email office@mlonghaulage.co.uk

GRAB	
REG	EY204ML
DRIVER	STEE

TIPPER	<input checked="" type="checkbox"/>
TICKET NUMBER	
52983	

PRODUCT	
	Type 1 Sub-base to Clause 803 S.H.W.
	Type 2 Sub-base to Clause 804 S.H.W.
	10mm 500 Series S.H.W.
	20mm 600 Series S.H.W.
	6F1 - 600 Series S.H.W.
	6F2 - 600 Series S.H.W.
	6F4 - 600 Series S.H.W.
	6F5 - 600 Series S.H.W.
	Ballast for foam concrete, grading to BSEN
	12620 as per clause 1043 S.H.W.

WASTE		
	Concrete/EWC	17-01-01
	Brick/EWC	17-01-02
	Tiles & Ceramics/EWC	17-01-02
	Mixture - Concrete, Brick, Tiles & Ceramic / EWC	17-01-07
<input checked="" type="checkbox"/>	Soil & Stones/EWC	17-05-04
	Road Base & Planings/EWC	17-05-04
	Track Ballast/EWC	17-05-08
	Mixed Construction & Demolition Waste EWC	38247
	Waste Gravel and Crushed Rock	10408
	Waste Sand and Clays	10408

OTHER MATERIAL WASTE	M/A
----------------------	-----

COLLECTION	DELIVERY
Time On Site	Time On Site
Time Loaded	Time Loaded
Waiting Time	Waiting Time

9.40
9.55

Weights & Measures act 1985 Schedule 4, Paragraph 7

Neptune Contract Services:-

Aggregate produce in accordance with WRAP protocol

M Long Haulage & Daughters Ltd

Customer ordering vehicles off the public road do so entirely on their own responsibility. We cannot accept responsibility for any damage caused by our vehicles when collecting or delivering off road.

I confirm that I have fulfilled my duty to apply the waste hierarchy as required by regulation 12 of the Waste (England and Wales) Regulations 2011.

NEPTUNE TIPPING PERMIT NO:- EPR/DB3806UM
M LONG HAULAGE & DAUGHTERS LTD
WASTE CARRIERS NUMBER :- CBDU115956

COLLECTION
CUSTOMER
ADDRESS
SIGN
PRINT

Hunter Environment
RADFORD Way
Bullthorpe
BULL

TIPPING/DELIVERING
CUSTOMER
ADDRESS
SIGN
PRINT



M LONG HAULAGE & DAUGHTERS LTD

THUNDERER ROAD
Off HINDMANS WAY
DAGENHAM DOCK
RM9 6LB

OFFICE 0208 596 9880
YARD 0208 596 9530
MOBILE 07966 195105

DATE **16-3-23**

Website www.mlonghaulage.co.uk

Email office@mlonghaulage.co.uk

GRAB	
REG	2120 JML
DRIVER	SPK

TIPPER	<input checked="" type="checkbox"/>
TICKET NUMBER	
52985	

PRODUCT	
	Type 1 Sub-base to Clause 803 S.H.W.
	Type 2 Sub-base to Clause 804 S.H.W.
	10mm 500 Series S.H.W.
	20mm 600 Series S.H.W.
	6F1 - 600 Series S.H.W.
	6F2 - 600 Series S.H.W.
	6F4 - 600 Series S.H.W.
	6F5 - 600 Series S.H.W.
	Ballast for foam concrete, grading to BSEN
	12620 as per clause 1043 S.H.W.

WASTE		
	Concrete/EWC	17-01-01
	Brick/EWC	17-01-02
	Tiles & Ceramics/EWC	17-01-02
	Mixture - Concrete, Brick, Tiles & Ceramic / EWC	17-01-07
<input checked="" type="checkbox"/>	Soil & Stones/EWC	17-05-04
	Road Base & Planings/EWC	17-05-04
	Track Ballast/EWC	17-05-08
	Mixed Construction & Demolition Waste EWC	38247
	Waste Gravel and Crushed Rock	10408
	Waste Sand and Clays	10408

OTHER MATERIAL WASTE	M/A
-----------------------------	-----

COLLECTION	DELIVERY
Time On Site	Time On Site
Time Loaded	Time Loaded
Waiting Time	Waiting Time

Weights & Measures act 1985 Schedule 4, Paragraph 7

Neptune Contract Services:-

Aggregate produce in accordance with WRAP protocol

M Long Haulage & Daughters Ltd

Customer ordering vehicles off the public road do so entirely on their own responsibility. We cannot accept responsibility for any damage caused by our vehicles when collecting or delivering off road.

I confirm that I have fulfilled my duty to apply the waste hierarchy as required by regulation 12 of the Waste (England and Wales) Regulations 2011.

NEPTUNE TIPPING PERMIT NO:- EPR/DB3806UM
M LONG HAULAGE & DAUGHTERS LTD
WASTE CARRIERS NUMBER :- CBDU115956

COLLECTION	
CUSTOMER	Hunter & Daughters
ADDRESS	Roadford Way Billericoy
SIGN	[Signature]
PRINT	

TIPPING/DELIVERING	
CUSTOMER	
ADDRESS	
SIGN	
PRINT	



M LONG HAULAGE & DAUGHTERS LTD

THUNDERER ROAD
Off HINDMANS WAY
DAGENHAM DOCK
RM9 6LB

OFFICE 0208 596 9880
YARD 0208 596 9530
MOBILE 07966 195105

DATE 16-5-23

Website www.mlonghaulage.co.uk

Email office@mlonghaulage.co.uk

GRAB	
REG	EX20 YML
DRIVER	STEE

TIPPER	<input checked="" type="checkbox"/>
TICKET NUMBER	
52987	

PRODUCT	
	Type 1 Sub-base to Clause 803 S.H.W.
	Type 2 Sub-base to Clause 804 S.H.W.
	10mm 500 Series S.H.W.
	20mm 600 Series S.H.W.
	6F1 - 600 Series S.H.W.
	6F2 - 600 Series S.H.W.
	6F4 - 600 Series S.H.W.
	6F5 - 600 Series S.H.W.
	Ballast for foam concrete, grading to BSEN
	12620 as per clause 1043 S.H.W.

WASTE		
	Concrete/EWC	17-01-01
	Brick/EWC	17-01-02
	Tiles & Ceramics/EWC	17-01-02
	Mixture - Concrete, Brick, Tiles & Ceramic / EWC	17-01-07
<input checked="" type="checkbox"/>	Soil & Stones/EWC	17-05-04
	Road Base & Planings/EWC	17-05-04
	Track Ballast/EWC	17-05-08
	Mixed Construction & Demolition Waste EWC	38247
	Waste Gravel and Crushed Rock	10408
	Waste Sand and Clays	10408

OTHER MATERIAL WASTE	M/A
-----------------------------	-----

COLLECTION	DELIVERY
Time On Site 11.00	Time On Site
Time Loaded 11.25	Time Loaded
Waiting Time	Waiting Time

Weights & Measures act 1985 Schedule 4, Paragraph 7

NEPTUNE TIPPING PERMIT NO:- EPR/DB3806UM
M LONG HAULAGE & DAUGHTERS LTD
WASTE CARRIERS NUMBER :- CBDU115956

Neptune Contract Services:- Aggregate produce in accordance with WRAP protocol M Long Haulage & Daughters Ltd Customer ordering vehicles off the public road do so entirely on their own responsibility. We cannot accept responsibility for any damage caused by our vehicles when collecting or delivering off road. I confirm that I have fulfilled my duty to apply the waste hierarchy as required by regulation 12 of the Waste (England and Wales) Regulations 2011.

COLLECTION
CUSTOMER Hunter Environment
ADDRESS Radford Way Buckley
SIGN
PRINT

TIPPING/DELIVERING
CUSTOMER
ADDRESS
SIGN
PRINT

Persons signing above are certifying that the information written on this ticket is true, that the quantity/quality and description of the material are all as stated and agree to the conditions stated on this ticket.



M LONG HAULAGE & DAUGHTERS LTD

THUNDERER ROAD
OFF HINDMANS WAY
DAGENHAM DOCK
RM9 6LB

OFFICE 0208 596 9880
YARD 0208 596 9530
MOBILE 07966 195105

DATE **16-3-23**

Website www.mlonghaulage.co.uk

Email office@mlonghaulage.co.uk

GRAB	
REG	<i>EY20YAL</i>
DRIVER	<i>Stark</i>

TIPPER	<input checked="" type="checkbox"/>
TICKET NUMBER	
52989	

PRODUCT	
	Type 1 Sub-base to Clause 803 S.H.W.
	Type 2 Sub-base to Clause 804 S.H.W.
	10mm 500 Series S.H.W.
	20mm 600 Series S.H.W.
	6F1 - 600 Series S.H.W.
	6F2 - 600 Series S.H.W.
	6F4 - 600 Series S.H.W.
	6F5 - 600 Series S.H.W.
	Ballast for foam concrete, grading to BSEN
	12620 as per clause 1043 S.H.W.

WASTE		
	Concrete/EWC	17-01-01
	Brick/EWC	17-01-02
	Tiles & Ceramics/EWC	17-01-02
	Mixture - Concrete, Brick, Tiles & Ceramic / EWC	17-01-07
<input checked="" type="checkbox"/>	Soil & Stones/EWC	17-05-04
	Road Base & Planings/EWC	17-05-04
	Track Ballast/EWC	17-05-08
	Mixed Construction & Demolition Waste EWC	38247
	Waste Gravel and Crushed Rock	10408
	Waste Sand and Clays	10408

OTHER MATERIAL WASTE	<i>M/A</i>
----------------------	------------

COLLECTION	DELIVERY
Time On Site <i>11.50</i>	Time On Site
Time Loaded	Time Loaded
Waiting Time <i>13.05</i>	Waiting Time

Weights & Measures act 1985 Schedule 4, Paragraph 7

Neptune Contract Services:-

Aggregate produce in accordance with WRAP protocol

M Long Haulage & Daughters Ltd

Customer ordering vehicles off the public road do so entirely on their own responsibility. We cannot accept responsibility for any damage caused by our vehicles when collecting or delivering off road.

I confirm that I have fulfilled my duty to apply the waste hierarchy as required by regulation 12 of the Waste (England and Wales) Regulations 2011.

NEPTUNE TIPPING PERMIT NO:- EPR/DB3806UM
M LONG HAULAGE & DAUGHTERS LTD
WASTE CARRIERS NUMBER :- CBDU115956

COLLECTION
CUSTOMER <i>Hunter Anderson</i>
ADDRESS <i>RADFORD Way Bilberray</i>
SIGN <i>Byl</i>
PRINT

TIPPING/DELIVERING
CUSTOMER
ADDRESS
SIGN
PRINT



M LONG HAULAGE & DAUGHTERS LTD

THUNDERER ROAD
Off HINDMANS WAY
DAGENHAM DOCK
RM9 6LB

OFFICE 0208 596 9880
YARD 0208 596 9530
MOBILE 07966 195105

DATE **16-3-23**

Website www.mlonghaulage.co.uk

Email office@mlonghaulage.co.uk

GRAB	
REG	EY20YML
DRIVER	STAE

TIPPER	<input checked="" type="checkbox"/>
TICKET NUMBER	
52991	

PRODUCT	
	Type 1 Sub-base to Clause 803 S.H.W.
	Type 2 Sub-base to Clause 804 S.H.W.
	10mm 500 Series S.H.W.
	20mm 600 Series S.H.W.
	6F1 - 600 Series S.H.W.
	6F2 - 600 Series S.H.W.
	6F4 - 600 Series S.H.W.
	6F5 - 600 Series S.H.W.
	Ballast for foam concrete, grading to BSEN
	12620 as per clause 1043 S.H.W.

WASTE	
	Concrete/EWC 17-01-01
	Brick/EWC 17-01-02
	Tiles & Ceramics/EWC 17-01-02
	Mixture - Concrete, Brick, Tiles & Ceramic / EWC 17-01-07
<input checked="" type="checkbox"/>	Soil & Stones/EWC 17-05-04
	Road Base & Planings/EWC 17-05-04
	Track Ballast/EWC 17-05-08
	Mixed Construction & Demolition Waste EWC 38247
	Waste Gravel and Crushed Rock 10408
	Waste Sand and Clays 10408

OTHER MATERIAL WASTE	M/R
-----------------------------	-----

COLLECTION	DELIVERY
Time On Site 13:40	Time On Site
Time Loaded 13:55	Time Loaded
Waiting Time	Waiting Time

Weights & Measures act 1985 Schedule 4, Paragraph 7.

Neptune Contract Services:-
Aggregate produce in accordance with WRAP protocol
M Long Haulage & Daughters Ltd
Customer ordering vehicles off the public road do so entirely on their own responsibility. We cannot accept responsibility for any damage caused by our vehicles when collecting or delivering off road.
I confirm that I have fulfilled my duty to apply the waste hierarchy as required by regulation 12 of the Waste (England and Wales) Regulations 2011.

NEPTUNE TIPPING PERMIT NO:- EPR/DB3806UM
M LONG HAULAGE & DAUGHTERS LTD
WASTE CARRIERS NUMBER :- CBDU115956

COLLECTION
CUSTOMER Hunter, Kabilasman
ADDRESS Redford Way Billerica
SIGN [Signature]
PRINT

TIPPING/DELIVERING
CUSTOMER
ADDRESS
SIGN
PRINT

Persons signing above are certifying that the information written on this ticket is true, that the quantity/quality and description of the material are all as stated and agree to the conditions stated on this ticket.



M LONG HAULAGE & DAUGHTERS LTD

THUNDERER ROAD
OFF HINDMANS WAY
DAGENHAM DOCK
RM9 6LB

OFFICE 0208 596 9880
YARD 0208 596 9530
MOBILE 07966 195105

DATE

16-3-23

Website www.mlonghaulage.co.uk

Email office@mlonghaulage.co.uk

GRAB	
REG	EY20YML
DRIVER	STEVE

TIPPER	<input checked="" type="checkbox"/>
TICKET NUMBER	
52993	

PRODUCT	
	Type 1 Sub-base to Clause 803 S.H.W.
	Type 2 Sub-base to Clause 804 S.H.W.
	10mm 500 Series S.H.W.
	20mm 600 Series S.H.W.
	6F1 - 600 Series S.H.W.
	6F2 - 600 Series S.H.W.
	6F4 - 600 Series S.H.W.
	6F5 - 600 Series S.H.W.
	Ballast for foam concrete, grading to BSEN
	12620 as per clause 1043 S.H.W.

WASTE	
	Concrete/EWC 17-01-01
	Brick/EWC 17-01-02
	Tiles & Ceramics/EWC 17-01-02
	Mixture - Concrete, Brick, Tiles & Ceramic / EWC 17-01-07
<input checked="" type="checkbox"/>	Soil & Stones/EWC 17-05-04
	Road Base & Planings/EWC 17-05-04
	Track Ballast/EWC 17-05-08
	Mixed Construction & Demolition Waste EWC 38247
	Waste Gravel and Crushed Rock 10408
	Waste Sand and Clays 10408

OTHER MATERIAL WASTE	M/A
-----------------------------	-----

COLLECTION	DELIVERY
Time On Site 14:20	Time On Site
Time Loaded 14:35	Time Loaded
Waiting Time	Waiting Time

Weights & Measures act 1985 Schedule 4, Paragraph 7

Neptune Contract Services:-

Aggregate produce in accordance with WRAP protocol

M Long Haulage & Daughters Ltd

Customer ordering vehicles off the public road do so entirely on their own responsibility. We cannot accept responsibility for any damage caused by our vehicles when collecting or delivering off road.

I confirm that I have fulfilled my duty to apply the waste hierarchy as required by regulation 12 of the Waste (England and Wales) Regulations 2011.

NEPTUNE TIPPING PERMIT NO:- EPR/DB3806UM
M LONG HAULAGE & DAUGHTERS LTD
WASTE CARRIERS NUMBER :- CBDU115956

COLLECTION
CUSTOMER HUNTER ENGINEERING
ADDRESS RINGFORD WAY BIRCHINGHAM
SIGN [Signature]
PRINT

TIPPING/DELIVERING
CUSTOMER
ADDRESS
SIGN
PRINT

Persons signing above are certifying that the information written on this ticket is true, that the quantity/quality and description of the material are all as stated and agree to the conditions stated on this ticket.



M LONG HAULAGE & DAUGHTERS LTD

THUNDERER ROAD
Off HINDMANS WAY
DAGENHAM DOCK
RM9 6LB

OFFICE 0208 596 9880
YARD 0208 596 9530
MOBILE 07966 195105

DATE

16-3-23

Website www.mlonghaulage.co.uk

Email office@mlonghaulage.co.uk

GRAB	
REG	R4204ML
DRIVER	STEE

TIPPER	✓
TICKET NUMBER	
52995	

PRODUCT	
	Type 1 Sub-base to Clause 803 S.H.W.
	Type 2 Sub-base to Clause 804 S.H.W.
	10mm 500 Series S.H.W.
	20mm 600 Series S.H.W.
	6F1 - 600 Series S.H.W.
	6F2 - 600 Series S.H.W.
	6F4 - 600 Series S.H.W.
	6F5 - 600 Series S.H.W.
	Ballast for foam concrete, grading to BSEN
	12620 as per clause 1043 S.H.W.

WASTE		
	Concrete/EWC	17-01-01
	Brick/EWC	17-01-02
	Tiles & Ceramics/EWC	17-01-02
	Mixture - Concrete, Brick, Tiles & Ceramic / EWC	17-01-07
✓	Soil & Stones/EWC	17-05-04
	Road Base & Planings/EWC	17-05-04
	Track Ballast/EWC	17-05-08
	Mixed Construction & Demolition Waste EWC	38247
	Waste Gravel and Crushed Rock	10408
	Waste Sand and Clays	10408

OTHER MATERIAL WASTE	M/A
----------------------	-----

COLLECTION	DELIVERY
Time On Site	Time On Site
Time Loaded	Time Loaded
Waiting Time	Waiting Time

15.10
15.25

Weights & Measures act 1985 Schedule 4, Paragraph 7

<p>Neptune Contract Services:- Aggregate produce in accordance with WRAP protocol</p> <p>M Long Haulage & Daughters Ltd Customer ordering vehicles off the public road do so entirely on their own responsibility. We cannot accept responsibility for any damage caused by our vehicles when collecting or delivering off road.</p> <p>I confirm that I have fulfilled my duty to apply the waste hierarchy as required by regulation 12 of the Waste (England and Wales) Regulations 2011.</p>
--

NEPTUNE TIPPING PERMIT NO:- EPR/DB3806UM
M LONG HAULAGE & DAUGHTERS LTD
WASTE CARRIERS NUMBER :- CBDU115956

COLLECTION
CUSTOMER
ADDRESS
SIGN
PRINT

HUNTER ENTERPRISES
RADFORD WAY
BULLOCK
(50)

TIPPING/DELIVERING
CUSTOMER
ADDRESS
SIGN
PRINT



M LONG HAULAGE & DAUGHTERS LTD

THUNDERER ROAD
Off HINDMANS WAY
DAGENHAM DOCK
RM9 6LB

OFFICE 0208 596 9880
YARD 0208 596 9530
MOBILE 07966 195105

DATE

17-3-23

Website www.mlonghaulage.co.uk

Email office@mlonghaulage.co.uk

GRAB	
REG	EY20 YML
DRIVER	STEVE

TIPPER	<input checked="" type="checkbox"/>
TICKET NUMBER	
52997	

PRODUCT	
	Type 1 Sub-base to Clause 803 S.H.W.
	Type 2 Sub-base to Clause 804 S.H.W.
	10mm 500 Series S.H.W.
	20mm 600 Series S.H.W.
	6F1 - 600 Series S.H.W.
	6F2 - 600 Series S.H.W.
	6F4 - 600 Series S.H.W.
	6F5 - 600 Series S.H.W.
	Ballast for foam concrete, grading to BSEN
	12620 as per clause 1043 S.H.W.

WASTE	
	Concrete/EWC 17-01-01
	Brick/EWC 17-01-02
	Tiles & Ceramics/EWC 17-01-02
	Mixture - Concrete, Brick, Tiles & Ceramic / EWC 17-01-07
<input checked="" type="checkbox"/>	Soil & Stones/EWC 17-05-04
	Road Base & Planings/EWC 17-05-04
	Track Ballast/EWC 17-05-08
	Mixed Construction & Demolition Waste EWC 38247
	Waste Gravel and Crushed Rock 10408
	Waste Sand and Clays 10408

OTHER MATERIAL WASTE	M/A
-----------------------------	-----

COLLECTION	DELIVERY
Time On Site 8.30	Time On Site
Time Loaded 8.45	Time Loaded
Waiting Time	Waiting Time

Weights & Measures act 1985 Schedule 4, Paragraph 7

Neptune Contract Services:-
Aggregate produce in accordance with WRAP protocol
M Long Haulage & Daughters Ltd
Customer ordering vehicles off the public road do so entirely on their own responsibility. We cannot accept responsibility for any damage caused by our vehicles when collecting or delivering off road.
I confirm that I have fulfilled my duty to apply the waste hierarchy as required by regulation 12 of the Waste (England and Wales) Regulations 2011.

NEPTUNE TIPPING PERMIT NO:- EPR/DB3806UM
M LONG HAULAGE & DAUGHTERS LTD
WASTE CARRIERS NUMBER :- CBDU115956

COLLECTION	
CUSTOMER	HUNTER ENGINEERS
ADDRESS	RAF FORD WAY Billingham
SIGN	[Signature]
PRINT	

TIPPING/DELIVERING	
CUSTOMER	
ADDRESS	
SIGN	
PRINT	



M LONG HAULAGE & DAUGHTERS LTD

THUNDERER ROAD
OFF HINDMANS WAY
DAGENHAM DOCK
RM9 6LB

OFFICE 0208 596 9880
YARD 0208 596 9530
MOBILE 07966 195105

DATE **17-3-23**

Website www.mlonghaulage.co.uk

Email office@mlonghaulage.co.uk

GRAB	
REG	<i>EY204ML</i>
DRIVER	<i>STAY</i>

TIPPER	<input checked="" type="checkbox"/>
TICKET NUMBER	
52999	

PRODUCT	
	Type 1 Sub-base to Clause 803 S.H.W.
	Type 2 Sub-base to Clause 804 S.H.W.
	10mm 500 Series S.H.W.
	20mm 600 Series S.H.W.
	6F1 - 600 Series S.H.W.
	6F2 - 600 Series S.H.W.
	6F4 - 600 Series S.H.W.
	6F5 - 600 Series S.H.W.
	Ballast for foam concrete, grading to BSEN
	12620 as per clause 1043 S.H.W.

WASTE		
	Concrete/EWC	17-01-01
	Brick/EWC	17-01-02
	Tiles & Ceramics/EWC	17-01-02
	Mixture - Concrete, Brick, Tiles & Ceramic / EWC	17-01-07
<input checked="" type="checkbox"/>	Soil & Stones/EWC	17-05-04
	Road Base & Planings/EWC	17-05-04
	Track Ballast/EWC	17-05-08
	Mixed Construction & Demolition Waste EWC	38247
	Waste Gravel and Crushed Rock	10408
	Waste Sand and Clays	10408

OTHER MATERIAL WASTE	<i>M/A</i>
-----------------------------	------------

COLLECTION	DELIVERY
Time On Site <i>9.5</i>	Time On Site
Time Loaded <i>9.30</i>	Time Loaded
Waiting Time	Waiting Time

Weights & Measures act 1985 Schedule 4, Paragraph 7

Neptune Contract Services:-

Aggregate produce in accordance with WRAP protocol

M Long Haulage & Daughters Ltd

Customer ordering vehicles off the public road do so entirely on their own responsibility. We cannot accept responsibility for any damage caused by our vehicles when collecting or delivering off road.

I confirm that I have fulfilled my duty to apply the waste hierarchy as required by regulation 12 of the Waste (England and Wales) Regulations 2011.

NEPTUNE TIPPING PERMIT NO:- EPR/DB3806UM
M LONG HAULAGE & DAUGHTERS LTD
WASTE CARRIERS NUMBER :- CBDU115956

COLLECTION	<input checked="" type="checkbox"/>
CUSTOMER	<i>HUNTER ENVIRONMENTAL</i>
ADDRESS	<i>RAGFORD WAY BRILLERIDGE</i>
SIGN	<i>E.M.</i>
PRINT	

TIPPING/DELIVERING	<input checked="" type="checkbox"/>
CUSTOMER	<i>NEPTUNE</i>
ADDRESS	<i>DONS DOCK</i>
SIGN	
PRINT	

Persons signing above are certifying that the information written on this ticket is true, that the quantity/quality and description of the material are all as stated and agree to the conditions stated on this ticket.



M LONG HAULAGE & DAUGHTERS LTD

THUNDERER ROAD
OFF HINDMANS WAY
DAGENHAM DOCK
RM9 6LB

OFFICE 0208 596 9880
YARD 0208 596 9530
MOBILE 07966 195105

DATE **17-3-23**

Website www.mlonghaulage.co.uk

Email office@mlonghaulage.co.uk

GRAB	
REG	EY20 YML
DRIVER	STEAL

TIPPER	<input checked="" type="checkbox"/>
TICKET NUMBER	
48301	

PRODUCT	
	Type 1 Sub-base to Clause 803 S.H.W.
	Type 2 Sub-base to Clause 804 S.H.W.
	10mm 500 Series S.H.W.
	20mm 600 Series S.H.W.
	6F1 - 600 Series S.H.W.
	6F2 - 600 Series S.H.W.
	6F4 - 600 Series S.H.W.
	6F5 - 600 Series S.H.W.
	Ballast for foam concrete, grading to BSEN
	12620 as per clause 1043 S.H.W.

WASTE	
	Concrete/EWC 17-01-01
	Brick/EWC 17-01-02
	Tiles & Ceramics/EWC 17-01-02
	Mixture - Concrete, Brick, Tiles & Ceramic / EWC 17-01-07
<input checked="" type="checkbox"/>	Soil & Stones/EWC 17-05-04
	Road Base & Planings/EWC 17-05-04
	Track Ballast/EWC 17-05-08
	Mixed Construction & Demolition Waste EWC 38247
	Waste Gravel and Crushed Rock 10408
	Waste Sand and Clays 10408

OTHER MATERIAL WASTE	M/A
----------------------	-----

COLLECTION	DELIVERY
Time On Site 13.35	Time On Site
Time Loaded 13.45	Time Loaded
Waiting Time	Waiting Time

Weights & Measures act 1985 Schedule 4, Paragraph 7

NEPTUNE TIPPING PERMIT NO:- EPR/DB3806UM
M LONG HAULAGE & DAUGHTERS LTD
WASTE CARRIERS NUMBER :- CBDU115956

Neptune Contract Services:-
Aggregate produce in accordance with WRAP protocol
M Long Haulage & Daughters Ltd
Customer ordering vehicles off the public road do so entirely on their own responsibility. We cannot accept responsibility for any damage caused by our vehicles when collecting or delivering off road.
I confirm that I have fulfilled my duty to apply the waste hierarchy as required by regulation 12 of the Waste (England and Wales) Regulations 2011.

COLLECTION
CUSTOMER Hunter Knivik
ADDRESS Radford Way Billericay
SIGN <i>[Signature]</i>
PRINT

TIPPING/DELIVERING
CUSTOMER NEPTUNE
ADDRESS DAG DOCK
SIGN
PRINT



M LONG HAULAGE & DAUGHTERS LTD

THUNDERER ROAD
OFF HINDMANS WAY
DAGENHAM DOCK
RM9 6LB

OFFICE 0208 596 9880
YARD 0208 596 9530
MOBILE 07966 195105

DATE **17-3-23**

Website www.mlonghaulage.co.uk

Email office@mlonghaulage.co.uk

GRAB	
REG	<i>EY209ML</i>
DRIVER	<i>STG</i>

TIPPER	<input checked="" type="checkbox"/>
TICKET NUMBER	
53000	

PRODUCT	
	Type 1 Sub-base to Clause 803 S.H.W.
	Type 2 Sub-base to Clause 804 S.H.W.
	10mm 500 Series S.H.W.
	20mm 600 Series S.H.W.
	6F1 - 600 Series S.H.W.
	6F2 - 600 Series S.H.W.
	6F4 - 600 Series S.H.W.
	6F5 - 600 Series S.H.W.
	Ballast for foam concrete, grading to BSEN
	12620 as per clause 1043 S.H.W.

WASTE	
	Concrete/EWC 17-01-01
	Brick/EWC 17-01-02
	Tiles & Ceramics/EWC 17-01-02
	Mixture - Concrete, Brick, Tiles & Ceramic / EWC 17-01-07
	Soil & Stones/EWC 17-05-04
	Road Base & Planings/EWC 17-05-04
	Track Ballast/EWC 17-05-08
	Mixed Construction & Demolition Waste EWC 38247
	Waste Gravel and Crushed Rock 10408
	Waste Sand and Clays 10408

OTHER MATERIAL WASTE	<i>1 LOAD 10m SPRINGCE</i>
-----------------------------	--------------------------------

COLLECTION	DELIVERY
Time On Site	Time On Site <i>13.25</i>
Time Loaded	Time Loaded
Waiting Time	Waiting Time

Weights & Measures act 1985 Schedule 4, Paragraph 7

Neptune Contract Services:-

Aggregate produce in accordance with WRAP protocol

M Long Haulage & Daughters Ltd

Customer ordering vehicles off the public road do so entirely on their own responsibility. We cannot accept responsibility for any damage caused by our vehicles when collecting or delivering off road.

I confirm that I have fulfilled my duty to apply the waste hierarchy as required by regulation 12 of the Waste (England and Wales) Regulations 2011.

NEPTUNE TIPPING PERMIT NO:- EPR/DB3806UM
M LONG HAULAGE & DAUGHTERS LTD
WASTE CARRIERS NUMBER :- CBDU115956

COLLECTION
CUSTOMER
ADDRESS
SIGN <i>STG</i>
PRINT

TIPPING/DELIVERING
CUSTOMER <i>Hunter EN111ALMOT</i>
ADDRESS <i>Redford Way Bicester</i>
SIGN
PRINT



M LONG HAULAGE & DAUGHTERS LTD

THUNDERER ROAD
Off HINDMANS WAY
DAGENHAM DOCK
RM9 6LB

OFFICE 0208 596 9880
YARD 0208 596 9530
MOBILE 07966 195105

DATE **16-3-23**

Website www.mlonghaulage.co.uk

Email office@mlonghaulage.co.uk

GRAB	
REG	EF17 XMX
DRIVER	Steve

TIPPER	
TICKET NUMBER	
52448	

PRODUCT	
	Type 1 Sub-base to Clause 803 S.H.W.
	Type 2 Sub-base to Clause 804 S.H.W.
	10mm 500 Series S.H.W.
	20mm 600 Series S.H.W.
	6F1 - 600 Series S.H.W.
	6F2 - 600 Series S.H.W.
	6F4 - 600 Series S.H.W.
	6F5 - 600 Series S.H.W.
	Ballast for foam concrete, grading to BSEN
	12620 as per clause 1043 S.H.W.

WASTE	
	Concrete/EWC 17-01-01
	Brick/EWC 17-01-02
	Tiles & Ceramics/EWC 17-01-02
	Mixture - Concrete, Brick, Tiles & Ceramic / EWC 17-01-07
	Soil & Stones/EWC 17-05-04
	Road Base & Planings/EWC 17-05-04
	Track Ballast/EWC 17-05-08
	Mixed Construction & Demolition Waste EWC 38247
	Waste Gravel and Crushed Rock 10408
	Waste Sand and Clays 10408

OTHER MATERIAL WASTE	M/A
-----------------------------	-----

COLLECTION	DELIVERY
Time On Site 14:20	Time On Site
Time Loaded 14:40	Time Loaded
Waiting Time	Waiting Time

Weights & Measures act 1985 Schedule 4, Paragraph 7

Neptune Contract Services:-

Aggregate produce in accordance with WRAP protocol

M Long Haulage & Daughters Ltd

Customer ordering vehicles off the public road do so entirely on their own responsibility. We cannot accept responsibility for any damage caused by our vehicles when collecting or delivering off road.

I confirm that I have fulfilled my duty to apply the waste hierarchy as required by regulation 12 of the Waste (England and Wales) Regulations 2011.

NEPTUNE TIPPING PERMIT NO:- EPR/DB3806UM
M LONG HAULAGE & DAUGHTERS LTD
WASTE CARRIERS NUMBER :- CBDU115956

COLLECTION	
CUSTOMER	Hunter Plant
ADDRESS	30, Radford Way Billericay CM12
SIGN	But
PRINT	

TIPPING/DELIVERING	
CUSTOMER	Brook Farm
ADDRESS	Ingatestone Rd
SIGN	
PRINT	



M LONG HAULAGE & DAUGHTERS LTD

THUNDERER ROAD
OFF HINDMANS WAY
DAGENHAM DOCK
RM9 6LB

OFFICE 0208 596 9880
YARD 0208 596 9530
MOBILE 07966 195105

DATE

16-3-23

Website www.mlonghaulage.co.uk

Email office@mlonghaulage.co.uk

GRAB	
REG	EP14 XHX
DRIVER	Steve

TIPPER	
TICKET NUMBER	
52449	

PRODUCT	
	Type 1 Sub-base to Clause 803 S.H.W.
	Type 2 Sub-base to Clause 804 S.H.W.
	10mm 500 Series S.H.W.
	20mm 600 Series S.H.W.
	6F1 - 600 Series S.H.W.
	6F2 - 600 Series S.H.W.
	6F4 - 600 Series S.H.W.
	6F5 - 600 Series S.H.W.
	Ballast for foam concrete, grading to BSEN
	12620 as per clause 1043 S.H.W.

WASTE	
	Concrete/EWC 17-01-01
	Brick/EWC 17-01-02
	Tiles & Ceramics/EWC 17-01-02
	Mixture - Concrete, Brick, Tiles & Ceramic / EWC 17-01-07
	Soil & Stones/EWC 17-05-04
	Road Base & Planings/EWC 17-05-04
	Track Ballast/EWC 17-05-08
	Mixed Construction & Demolition Waste EWC 38247
	Waste Gravel and Crushed Rock 10408
	Waste Sand and Clays 10408

OTHER MATERIAL WASTE	M/A
-----------------------------	-----

COLLECTION	DELIVERY
Time On Site 15:10	Time On Site
Time Loaded	Time Loaded
Waiting Time 15:25	Waiting Time

Weights & Measures act 1985 Schedule 4, Paragraph 7

NEPTUNE TIPPING PERMIT NO:- EPR/DB3806UM
M LONG HAULAGE & DAUGHTERS LTD
WASTE CARRIERS NUMBER :- CBDU115956

Neptune Contract Services:-
Aggregate produce in accordance with WRAP protocol
M Long Haulage & Daughters Ltd
Customer ordering vehicles off the public road do so entirely on their own responsibility. We cannot accept responsibility for any damage caused by our vehicles when collecting or delivering off road.
I confirm that I have fulfilled my duty to apply the waste hierarchy as required by regulation 12 of the Waste (England and Wales) Regulations 2011.

COLLECTION	
CUSTOMER	Hunter Plant
ADDRESS	30, Radford Way Billerica
SIGN	6.11
PRINT	

TIPPING/DELIVERING	
CUSTOMER	Brook Farm
ADDRESS	Ingatstone RD
SIGN	
PRINT	

Persons signing above are certifying that the information written on this ticket is true, that the quantity/quality and description of the material are all as stated and agree to the conditions stated on this ticket.

WE LISTEN, WE PLAN, WE DELIVER

Geotechnical Engineering and Environmental Services across the UK



CSci
Chartered
Scientist



IEMA
Transforming the world
to sustainability

JOMAS ASSOCIATES LTD

Unit 24 Sarum Complex

Salisbury Road

Uxbridge

UB8 2RZ

CONTACT US

Website: www.jomasassociates.com

Tel: 0333 305 9054

Email: info@jomasassociates.com